

DALEY LAND SURVEYING, INC.

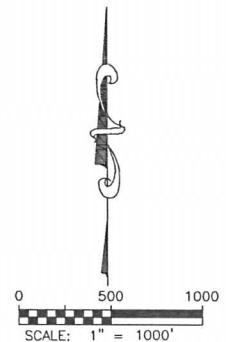
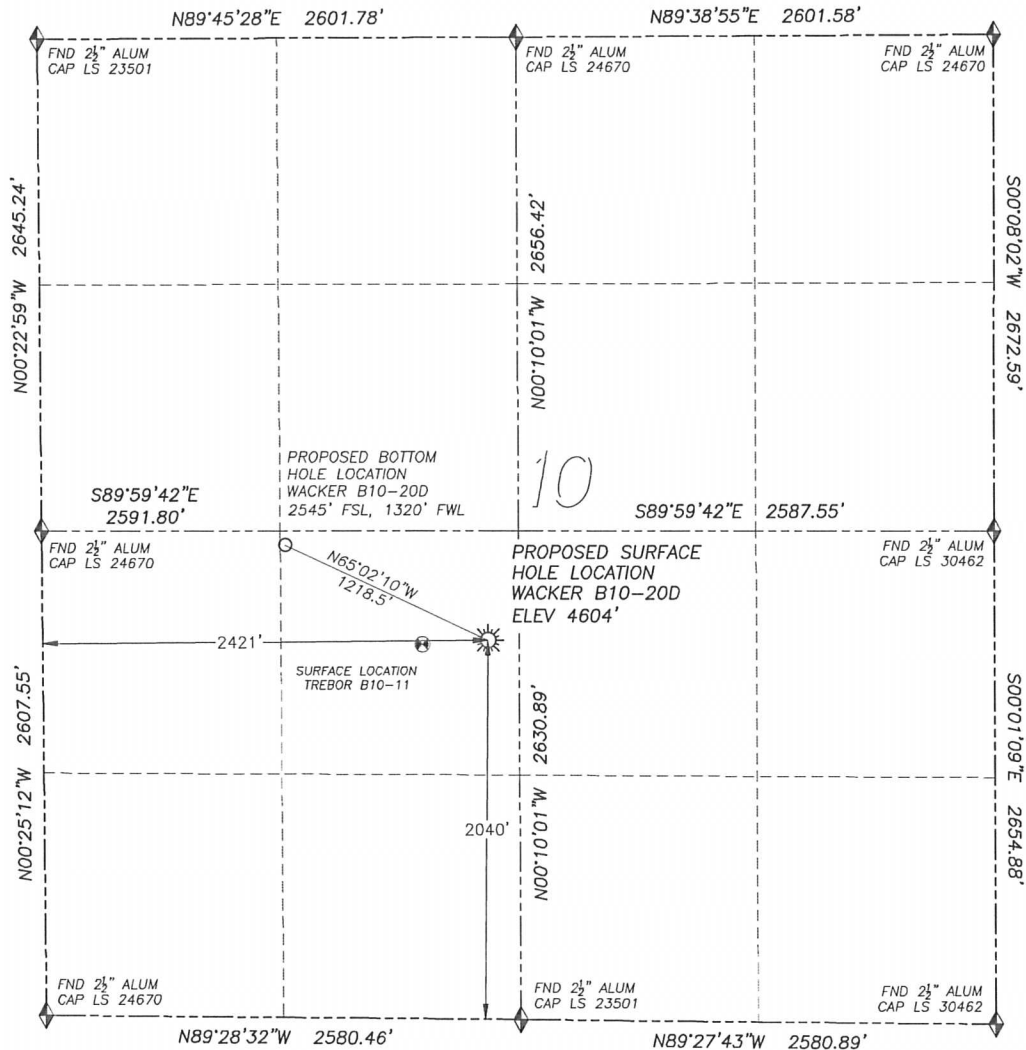
PARKER, CO. 80134

303 953 9841

# WELL LOCATION CERTIFICATE

## WACKER B10-20D

SECTION 10, TOWNSHIP 5 NORTH, RANGE 64 WEST OF THE 6TH PRINCIPAL MERIDIAN



### LEGEND

- ◆ FOUND MONUMENT AS DESCRIBED
- ☀ PROPOSED WELL
- ⊙ EXISTING WELL
- BOTTOM HOLE
- ⊗ ABANDONED WELL

### NAD 83 LATITUDE AND LONGITUDE

#### WACKER B10-20D SURFACE HOLE:

LATITUDE: N40.41212°  
 LONGITUDE: W104.53694°  
 ELEVATION: 4604'  
 PDOP: 1.9

2040' FSL, 2421' FWL

#### BOTTOM HOLE:

LATITUDE: N40.41354°  
 LONGITUDE: W104.54091°  
 2545' FSL, 1320' FWL

#### NEAREST EXISTING WELL:

TREBOR B 10-11  
 LATITUDE: N40.41206°  
 LONGITUDE: W104.53823°  
 ELEVATION: 4602'  
 368' WEST

QUARTER/QUARTER: NE4/SW4

#### NEAREST APPARENT PROPERTY LINE:

167'± NORTHWEST

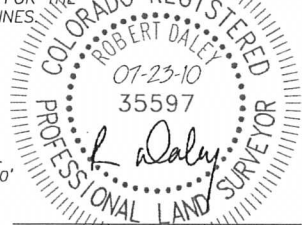
IN ACCORDANCE WITH A REQUEST FROM JOE JOHNSON OF NOBLE ENERGY INC., DALEY LAND SURVEYING, INC. HAS DETERMINED THE SURFACE LOCATION OF THE WACKER B10-20D WELL TO BE 2040' FSL, 2421' FWL, AS MEASURED AT NINETY (90) DEGREES FROM THE SECTION LINES OF SECTION 10, TOWNSHIP 5 NORTH, RANGE 64 WEST OF THE 6TH PRINCIPAL MERIDIAN, WELD COUNTY, COLORADO. THE BOTTOM HOLE LOCATION, PROVIDED BY THE CLIENT, IS TO BE 2545' FSL, 1320' FWL.

I HEREBY CERTIFY THAT THIS WELL LOCATION CERTIFICATE WAS PREPARED BY ME OR UNDER MY DIRECT SUPERVISION, THAT THE WORK WAS COMPLETED ON 7/22/2010 FOR AND ON BEHALF OF NOBLE ENERGY, INC., AND THAT THIS MAP DOES NOT REPRESENT A BOUNDARY SURVEY, IT IS NOT A LAND SURVEY PLAT OR AN IMPROVEMENT SURVEY PLAT AND IT IS NOT TO BE RELIED UPON FOR THE ESTABLISHMENT OF FENCE, BUILDING OR OTHER FUTURE IMPROVEMENT LINES.

#### NOTES:

- 1) BEARINGS FOR THIS MAP ARE ASSUMED AND BASED UPON GPS OBSERVATIONS MADE BETWEEN MONUMENTS LOCATED AT THE SOUTHWEST CORNER AND WEST QUARTER CORNER OF SECTION 10, T.5N., R.64W.
- 2) HORIZONTAL DATUM IS NAD83.
- 3) VERTICAL DATUM IS NAVD88. ELEVATIONS ARE DERIVED FROM GPS OBSERVATIONS PROCESSED THROUGH OPUS, UTILIZING THE GEOID03 MODEL.
- 4) SEE VISIBLE IMPROVEMENTS EXHIBIT FOR VISIBLE IMPROVEMENTS WITHIN 600' OF PROPOSED SURFACE HOLE LOCATION.
- 5) SURFACE USE: AGRICULTURAL

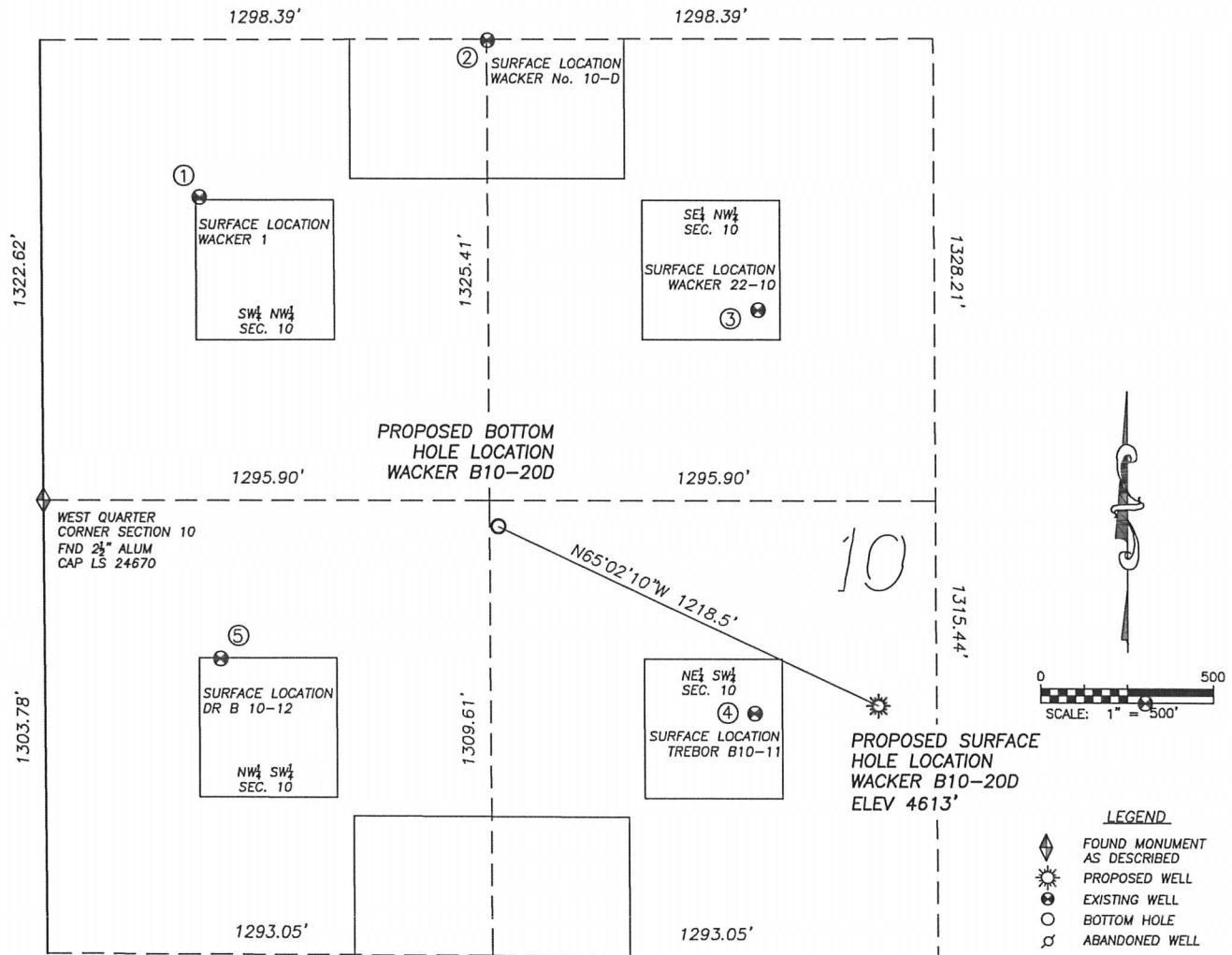
NOTICE: According to Colorado law you MUST commence any legal action based upon any defect in this W.L.C. within three years after you first discover such defect. In no event may any action based upon any such defect in this W.L.C. be commenced more than ten years from the date of the certification shown hereon.



FOR AND ON BEHALF OF  
 DALEY LAND SURVEYING INC.,  
 Robert Daley, PLS 35597

# SITE SKETCH WACKER B10-20D

SECTION 10, TOWNSHIP 5 NORTH, RANGE 64 WEST OF THE 6TH PRINCIPAL MERIDIAN



①

**WACKER 1**

SW/NW SEC. 10  
1777' FNL, 459' FWL  
1283' NW OF PROPOSED  
BOTTOM HOLE LOCATION  
LAT. N40.41613'  
LONG. W104.54402'  
EL: 4611'  
PDOP 2.3

②

**WACKER No.10D**

SE/NW SEC. 10  
1328' FNL, 1300' FWL  
1398' N OF PROPOSED  
BOTTOM HOLE LOCATION  
LAT. N40.41737'  
LONG. W104.54102'  
EL: 4611'  
PDOP 2.2

③

**WACKER 22-10**

SE/NW SEC. 10  
2107' FNL, 2080' FWL  
979' NE OF PROPOSED  
BOTTOM HOLE LOCATION  
LAT. N40.41524'  
LONG. W104.53820'  
EL: 4616'  
PDOP 2.2

④

**TREBOR B10-11**

NE/SW SEC. 10  
2014' FSL, 2061' FWL  
918' SE OF PROPOSED  
BOTTOM HOLE LOCATION  
LAT. N40.41206'  
LONG. W104.53823'  
EL: 4602'  
PDOP 2.0

⑤

**DR B 10-12**

NW/SW SEC. 10  
2156' FSL, 509' FWL  
893' SW OF PROPOSED  
BOTTOM HOLE LOCATION  
LAT. N40.41249'  
LONG. W104.54381'  
EL: 4596'  
PDOP 1.6

## NOTES:

- THIS DOES NOT REPRESENT A BOUNDARY SURVEY
- THE LATITUDES AND LONGITUDES SHOWN ARE REFERENCED TO NAD83
- DATUM FOR ELEVATION IS NAVD88. ELEVATIONS ARE DERIVED FROM GPS-RTK OBSERVATIONS PROCESSED THROUGH OPUS, UTILIZING THE GEOID03 MODEL.