

MULTI WELL PLAN

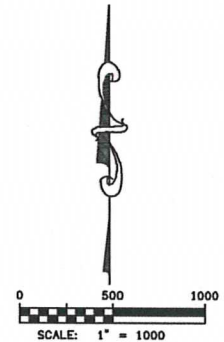
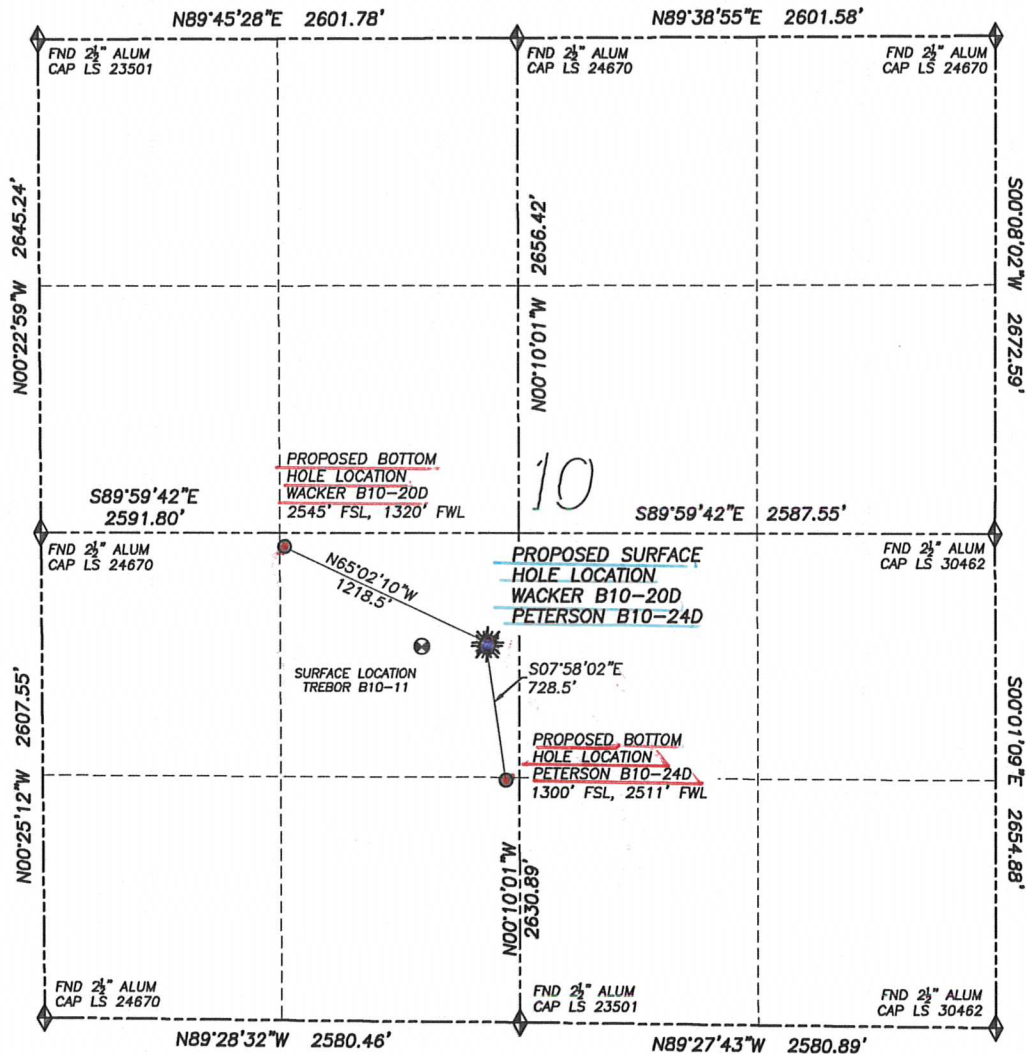
DALEY LAND SURVEYING, INC.

PARKER, CO. 80134

303 953 9841

DIRECTIONAL LAYOUT WACKER B10-20D & PETERSON B10-24D

SECTION 10, TOWNSHIP 5 NORTH, RANGE 64 WEST OF THE 6TH PRINCIPAL MERIDIAN



- LEGEND**
- ◆ FOUND MONUMENT AS DESCRIBED
 - ☀ PROPOSED WELL
 - ⊙ EXISTING WELL
 - BOTTOM HOLE
 - ⊘ ABANDONED WELL

NAD 83 LATITUDE AND LONGITUDE

WACKER B10-20D SURFACE HOLE:

LATITUDE: N40.41212'
LONGITUDE: W104.53694'
ELEVATION: 4604'
FOOTAGE: 2040' FSL, 2421' FWL
PDOP: 1.9
QTR/QTR: NE4/SW4
PROP LINE: 167'± NORTHWEST

BOTTOM HOLE:

LATITUDE: N40.41354'
LONGITUDE: W104.54091'
FOOTAGE: 2545' FSL, 1320' FWL

NEAREST EXISTING WELL:

TREBOR B10-11 SURFACE HOLE
LATITUDE: N40.41206'
LONGITUDE: W104.53823'
ELEVATION: 4602'
368' WEST

NAD 83 LATITUDE AND LONGITUDE

PETERSON B10-24D SURFACE HOLE:

LATITUDE: N40.41207'
LONGITUDE: W104.53696'
ELEVATION: 4606'
FOOTAGE: 2020' FSL, 2415' FWL
PDOP: 1.2
QTR/QTR: NE4/SW4
PROP LINE: 174'± EAST

BOTTOM HOLE:

LATITUDE: N40.41009'
LONGITUDE: W104.53660'
FOOTAGE: 1300' FSL, 2511' FWL

NEAREST EXISTING WELL:

TREBOR B10-11 SURFACE HOLE
LATITUDE: N40.41206'
LONGITUDE: W104.53823'
ELEVATION: 4602'
354' WEST

