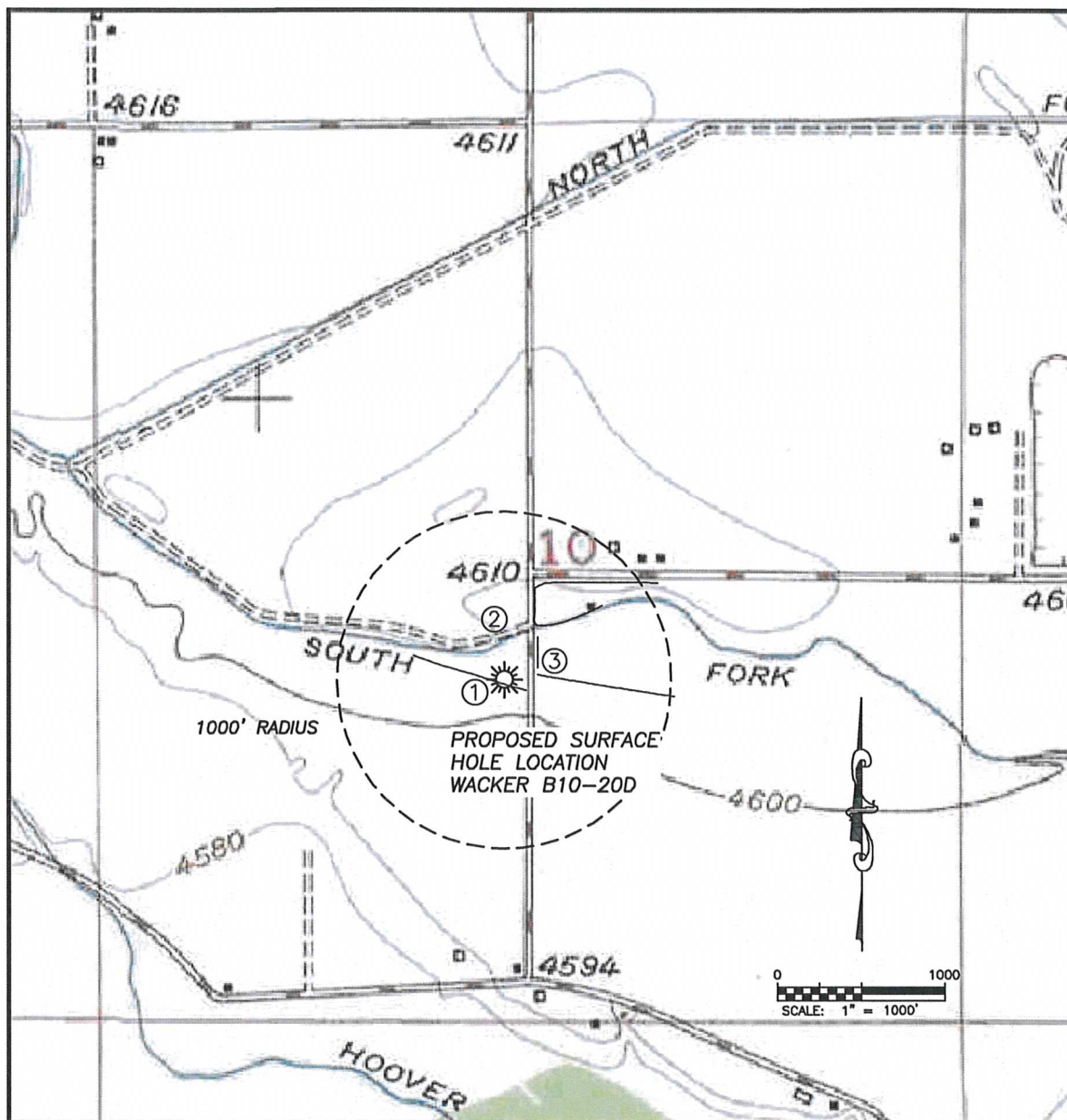


## HYDROLOGY MAP WACKER B10-20D

SECTION 10, TOWNSHIP 5 NORTH, RANGE 64 WEST OF THE 6TH PRINCIPAL MERIDIAN



①

IRRIG. DITCH  
23'± SW

②

SOUTH EDGE CANAL  
155± NW

③

CONCRETE DITCH  
200± NE