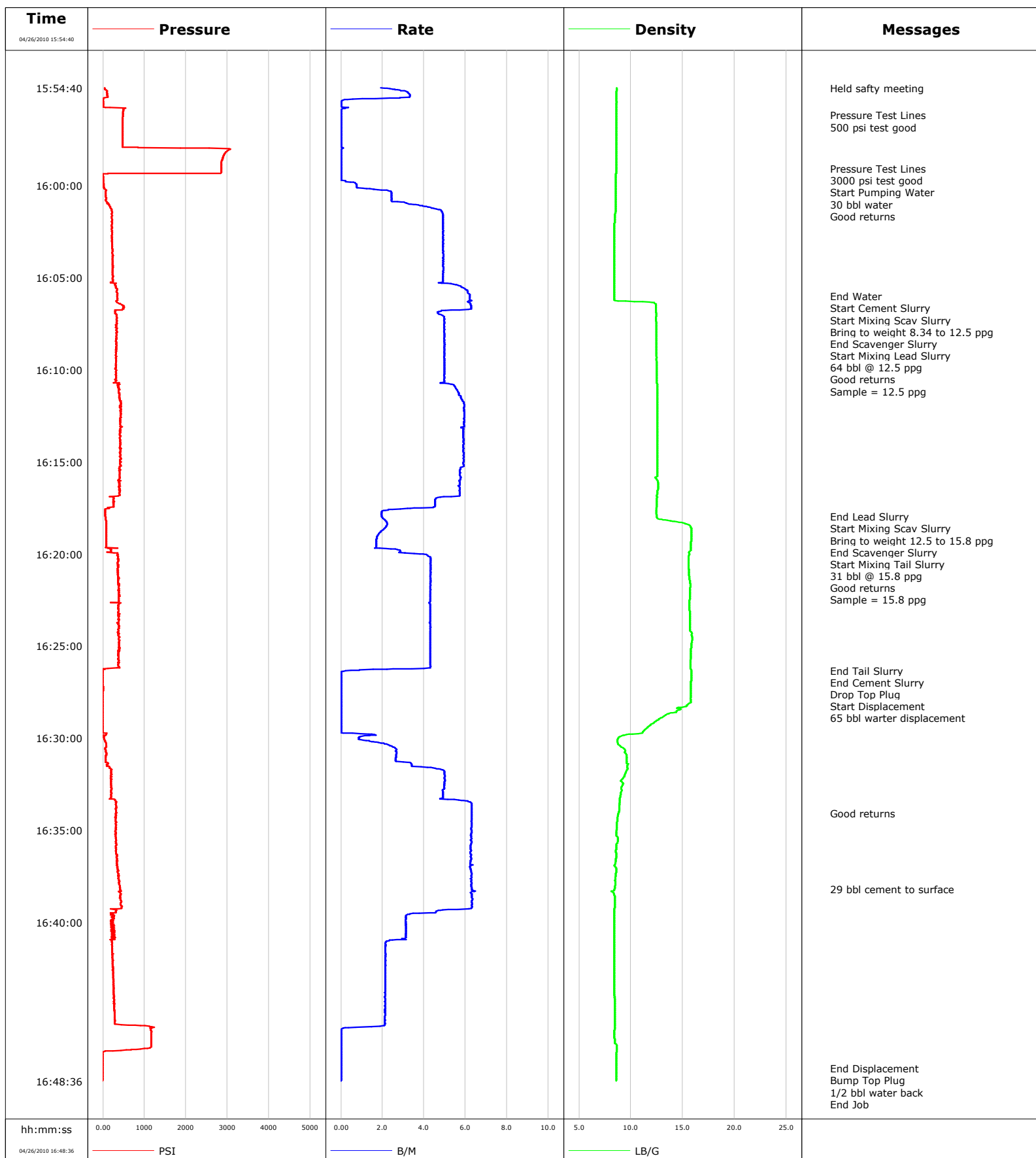


**Well** Shideler 36-9D (C31)  
**Field** Mamm Creek  
**Engineer** Terry Borg  
**Country** United States

**Client** Encana  
**SIR No.** B708-00108  
**Job Type** 9 5/8 Surface  
**Job Date** 04-26-2010





# Cementing Service Report

				Customer Encana		Job Number B708-00108		
Well Shideler 36-9D (C31) Shideler 36-9D (C31)			Location (legal) 36-9D (C31)		Schlumberger Location GCO		Job Start Apr/26/2010	
Field Mamm Creek		Formation Name/Type Shale		Deviation 0 deg	Bit Size 12.3 in	Well MD 885.0 ft		Well TVD 885.0 ft
County Garfield		State/Province Colorado		BHP	BHST 100 degF	BHCT 85 degF	Pore Press. Gradient	
Well Master 0631150795		API/UWI						
Rig Name Nabors M-15	Drilled For Gas	Service Via Land	Casing/Liner					
			Depth, ft	Size, in	Weight, lb/ft	Grade	Thread	
Offshore Zone	Well Class New	Well Type Development	885.0	9.630	36.0	J55	8RD	
			0.0	0.000	0.0			
Drilling Fluid Type Bentonite		Max. Density	Plastic Viscosity	Tubing/Drill Pipe				
				Depth,	Size,	Weight,	Grade	Thread
Service Line Cementing	Job Type 9 5/8 Surface							
Max. Allowed Tub. Press 4000 psi	Max. Allowed Ann. Press 1500 psi	WH Connection 9 5/8	Perforations/Open Hole					
			Top,	Bottom,		No. of Shots	Total Interval	
<b>Service Instructions</b> Cement 9 5/8" surface casing @885ft in 12 1/4" OH with 20 bbl water 170 sks 12.5 ppq Lead 149 sks 15.8 ppq Tail Displace with water							Diameter	
			Treat Down Casing	Displacement 65.0 bbl	Packer Type	Packer Depth		
			Tubing Vol.	Casing Vol. 68.0 bbl	Annular Vol. 91.0 bbl	Openhole Vol. 137.0 bbl		
Casing/Tubing Secured <input checked="" type="checkbox"/>		1 Hole Vol. Circulated prior to Cement <input checked="" type="checkbox"/>		Casing Tools		Squeeze Job		
Lift Pressure 438 psi				Shoe Type Guide		Squeeze Type		
Pipe Rotated <input type="checkbox"/>		Pipe Reciprocated <input type="checkbox"/>		Shoe Depth 885.0 ft		Tool Type		
No. Centralizers 12		Top Plugs 1	Bottom Plugs	Stage Tool Type		Tool Depth		
Cement Head Type Single			Stage Tool Depth		Tail Pipe Size			
Job Scheduled For Apr/26/2010 13:00		Arrived on Location Apr/26/2010 15:00	Leave Location Apr/26/2010 18:00	Collar Type Diff-Fill		Tail Pipe Depth		
				Collar Depth 842.0 ft		Sqz. Total Vol.		
Date	Time 24-hr clock	Treating Pressure PSI	Flow Rate B/M	Density LB/G	Volume BBL	Message		
01/01/1970	00:00:00					Start Job		
04/26/2010	15:19:30					Started Acquisition		
04/26/2010	15:54:40	28	1.7	8.62	0.0			
04/26/2010	15:54:43					Held safty meeting		
04/26/2010	15:54:43	39	2.2	8.62	0.1			
04/26/2010	15:55:00	108	3.3	8.61	1.0			
04/26/2010	15:56:09					Pressure Test Lines		
04/26/2010	15:56:09	480	0.0	8.61	1.9			
04/26/2010	15:56:10					500 psi test good		
04/26/2010	15:56:10	480	0.0	8.61	1.9			
04/26/2010	15:59:03					Pressure Test Lines		
04/26/2010	15:59:03	2853	0.0	8.60	1.9			
04/26/2010	15:59:04					3000 psi test good		
04/26/2010	15:59:04	2853	0.0	8.60	1.9			
04/26/2010	15:59:54					Start Pumping Water		
04/26/2010	15:59:54	19	0.7	8.56	2.0			
04/26/2010	15:59:56					30 bbl water		
04/26/2010	15:59:56					Good returns		
04/26/2010	15:59:56	17	0.7	8.56	2.0			
04/26/2010	16:00:00	13	0.7	8.56	2.0			
04/26/2010	16:05:00	243	4.9	8.40	23.7			

Well Shideler 36-9D (C31) Shideler 36-9D (C31)			Field Mamm Creek		Job Start Apr/26/2010		Customer Encana		Job Number B708-00108	
Date	Time 24-hr clock	Treating Pressure PSI		Flow Rate B/M	Density LB/G		Volume BBL		Message	
04/26/2010	16:05:59	335		6.2	8.41		29.3			
04/26/2010	16:06:03								Start Cement Slurry	
04/26/2010	16:06:03	352		6.2	8.41		29.7			
04/26/2010	16:06:04								Start Mixing Scav Slurry	
04/26/2010	16:06:04	350		6.2	8.41		29.8			
04/26/2010	16:06:08								Bring to weight 8.34 to 12.5 ppg	
04/26/2010	16:06:08	354		6.2	8.41		30.2			
04/26/2010	16:06:31								End Scavenger Slurry	
04/26/2010	16:06:31								Start Mixing Lead Slurry	
04/26/2010	16:06:31	492		6.3	12.41		32.6			
04/26/2010	16:08:41								64 bbl @ 12.5 ppg	
04/26/2010	16:08:41	335		5.0	12.47		43.6			
04/26/2010	16:08:42								Good returns	
04/26/2010	16:08:42	330		5.0	12.47		43.7			
04/26/2010	16:08:44								Sample = 12.5 ppg	
04/26/2010	16:08:44	316		5.0	12.47		43.8			
04/26/2010	16:10:00	333		5.0	12.48		50.1			
04/26/2010	16:15:00	442		5.9	12.55		78.8			
04/26/2010	16:17:57								End Lead Slurry	
04/26/2010	16:17:57	59		2.0	12.49		93.4			
04/26/2010	16:17:59								Start Mixing Scav Slurry	
04/26/2010	16:17:59	60		2.0	12.51		93.4			
04/26/2010	16:18:02								Bring to weight 12.5 to 15.8 ppg	
04/26/2010	16:18:02	64		2.0	12.53		93.5			
04/26/2010	16:18:30								End Scavenger Slurry	
04/26/2010	16:18:30	79		2.2	15.76		94.5			
04/26/2010	16:18:32								Start Mixing Tail Slurry	
04/26/2010	16:18:32	80		2.2	15.79		94.6			
04/26/2010	16:18:36								31 bbl @ 15.8 ppg	
04/26/2010	16:18:36	80		2.1	15.82		94.8			
04/26/2010	16:18:37								Good returns	
04/26/2010	16:18:37	80		2.1	15.83		94.8			
04/26/2010	16:18:38								Sample = 15.8 ppg	
04/26/2010	16:18:38	79		2.1	15.83		94.8			
04/26/2010	16:20:00	349		4.0	15.64		97.6			
04/26/2010	16:25:00	396		4.3	15.82		119.1			
04/26/2010	16:26:19								End Tail Slurry	
04/26/2010	16:26:19	-9		0.5	15.84		124.5			
04/26/2010	16:26:20								End Cement Slurry	
04/26/2010	16:26:20	-9		0.2	15.85		124.5			
04/26/2010	16:26:27								Drop Top Plug	
04/26/2010	16:26:27	-11		0.0	15.85		124.5			
04/26/2010	16:26:28								Start Displacement	
04/26/2010	16:26:28	-9		0.0	15.85		124.5			
04/26/2010	16:26:30								65 bbl warter displacement	
04/26/2010	16:26:30	-10		0.0	15.85		124.5			
04/26/2010	16:30:00	25		0.9	8.79		124.8			
04/26/2010	16:34:05								Good returns	
04/26/2010	16:34:05	309		6.3	8.80		142.2			
04/26/2010	16:35:00	300		6.3	8.62		148.0			
04/26/2010	16:38:11								29 bbl cement to surface	
04/26/2010	16:38:11	405		6.3	8.43		167.9			
04/26/2010	16:40:00	221		3.1	8.42		177.5			
04/26/2010	16:45:00	286		2.1	8.43		189.1			

Well			Field		Job Start	Customer		Job Number
Shideler 36-9D (C31) Shideler 36-9D (C31)			Mamm Creek		Apr/26/2010	Encana		B708-00108
Date	Time 24-hr clock	Treating Pressure PSI		Flow Rate B/M	Density LB/G	Volume BBL	Message	
04/26/2010	16:47:55	-5		0.0	8.60	190.5		
04/26/2010	16:47:56						Bump Top Plug	
04/26/2010	16:47:56	-4		0.0	8.60	190.5		
04/26/2010	16:48:02						1/2 bbl water back	
04/26/2010	16:48:02	-1		0.0	8.60	190.5		
04/26/2010	16:48:31						End Job	
04/26/2010	16:48:31	-3		0.0	8.59	190.5		

Post Job Summary

Average Pump Rates, bbl/min					Volume of Fluid Injected, bbl					
Slurry 4.3	N2	Mud 0.0	Maximum Rate 6.5		Total Slurry 95.0	Mud 0.0	Spacer 29.6	N2		
Treating Pressure Summary, psi					Breakdown Fluid					
Maximum 3075	Final 1100	Average 385	Bump Plug to 1100	Breakdown	Type		Volume		Density	
Avg. N2 Percent		Designed Slurry Volume 95.0 bbl		Displacement 65.0 bbl	Mix Water Temp 60 degF		Cement Circulated to Surface? <input checked="" type="checkbox"/>		Volume 29.0 bbl	
						Washed Thru Perfs <input type="checkbox"/>		To		
Customer or Authorized Representative			Schlumberger Supervisor			Circulation Lost <input type="checkbox"/>		Job Completed <input checked="" type="checkbox"/>		
Tim Phillips			Terry Borg			-		-		