

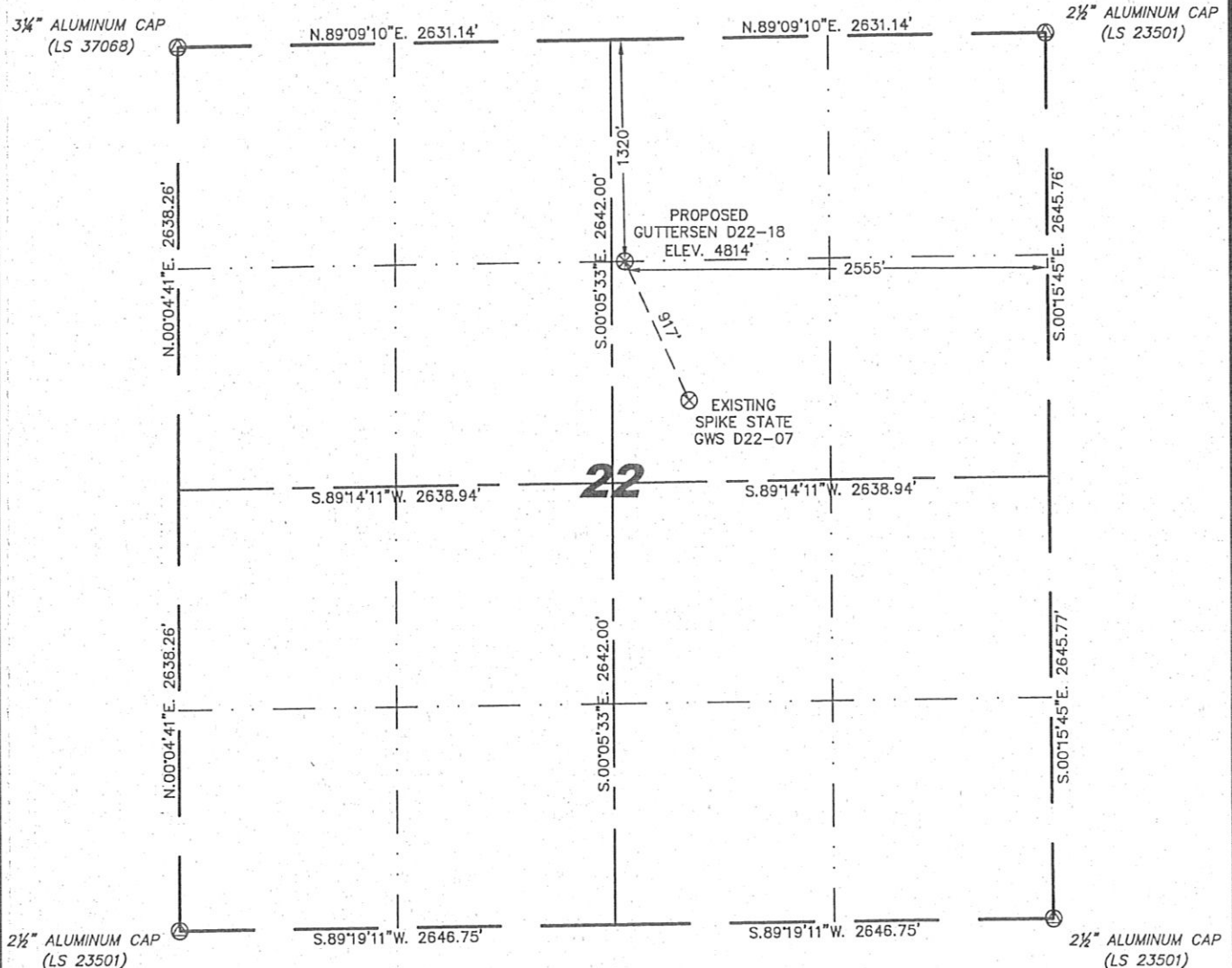
Steil Surveying Services, LLC

1102 West 19th Street P.O. BOX 2073

Cheyenne, Wyoming 82009

WELL LOCATION CERTIFICATE
THIS MAP DOES NOT REPRESENT A BOUNDARY SURVEY

SECTION 22
TOWNSHIP 3 NORTH
RANGE 64 WEST



0 1000

Scale: 1" = 1000'

IN ACCORDANCE WITH A REQUEST FROM JOE JOHNSON - NOBLE ENERGY INC, STEIL SURVEYING SERVICES, LLC HAS DETERMINED THE LOCATION OF THE GUTTERSEN D22-18 WELL TO BE 1320' FNL, 2555' FEL, AS MEASURED AT NINETY (90) DEGREES FROM THE SECTION LINES, SECTION 22, TOWNSHIP 3 NORTH, RANGE 64 WEST, 6TH PRINCIPLE MERIDIAN, WELD COUNTY, COLORADO.

I HEREBY CERTIFY THAT THIS WELL LOCATION CERTIFICATE WAS PREPARED BY ME, OR UNDER MY DIRECT SUPERVISION, THAT THE FIELD WORK WAS COMPLETED ON 07/27/2010, FOR AND ON BEHALF OF NOBLE ENERGY INC, THAT IT IS NOT A LAND SURVEY PLAT OR AN IMPROVEMENT SURVEY PLAT, AND THAT IT IS NOT TO BE RELIED UPON FOR ESTABLISHMENT OF FENCE, BUILDING, OR OTHER FUTURE IMPROVEMENT LINES.

NOTES:

- 1) BASIS OF BEARINGS FOR THIS MAP ARE BASED UPON GPS OBSERVATIONS MADE ON 07/27/2010 BETWEEN MONUMENTS LOCATED AT THE SOUTHEAST SECTION CORNER AND THE NORTHEAST SECTION CORNER OF SAID SECTION AND WITH ALL BEARINGS SHOWN HEREON RELATIVE THERETO.
- 2) ELEVATIONS ARE BASED UPON NGS OPUS SOLUTION NAVD 88 DATUM.
- 3) THE NEAREST EXISTING WELL IS: SPIKE STATE GWS D22-07, 917' SOUTHEAST.
- 4) SEE VISIBLE IMPROVEMENTS EXHIBIT FOR ALL IMPROVEMENTS WITHIN 600'.
- 5) THE LOCATION FALLS IN PASTURE LAND.

LATITUDE & LONGITUDE (NAD 83 SURFACE HOLE):

LATITUDE: N 40.21450°

LONGITUDE: W 104.53705°

PDOP: 1.7

QUARTER-QUARTER: NW/4NE/4

NEAREST PROPERTY LINE: 80' TO THE WEST

LEGEND

(A) FOUND SURVEY MONUMENT PER MONUMENT RECORD - EXCEPTIONS NOTED.

(C) CALCULATED DIMENSION

David C. Holmes
Professional Land Surveyor Registration No. 32828
State of Colorado

JOB #: 10086

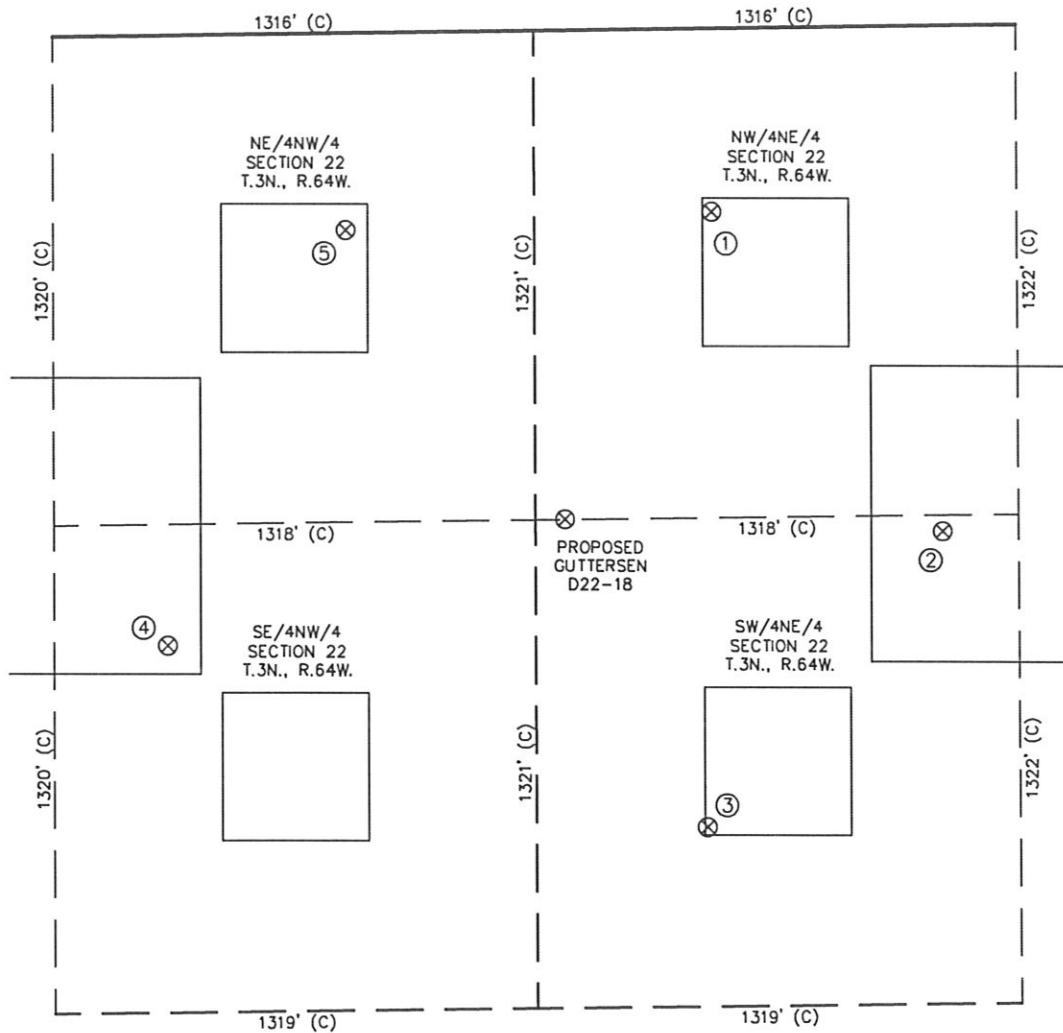
Completed 08/02/2010



NOTICE: According to Colorado law you MUST commence any legal action based upon any defect in this W.L.C. within three years after you first discover such defect. In no event may any action based upon any defect in this W.L.C. be commenced more than ten years from this said date of the certification shown hereon.

SKETCH - GUTTERSEN D22-18

SECTION 22
TOWNSHIP 3 NORTH
RANGE 64 WEST



①

SPIKE STATE
GWS D22-02
NW/NE SEC. 22
495' FNL
2148' FEL
EL 4816'
N 40.21677
W 104.53558
PDOP 2.9

②

SPIKE STATE
GWS D22-1J
SW/NE SEC. 22
1366' FNL
1522' FEL
EL 4828'
N 40.21439
W 104.53336
PDOP 2.7

③

SPIKE STATE
GWS D22-07
SW/NE SEC. 22
2157' FNL
2172' FEL
EL 4820'
N 40.21221
W 104.53570
PDOP 2.9

④

DALBEY D22-6
SE/NW SEC. 22
1647' FNL
1628' FWL
EL 4806'
N 40.21359
W 104.54096
PDOP 2.2

⑤

DALBEY D22-3
NE/NW SEC. 22
532' FNL
2114' FWL
EL 4805'
N 40.21666
W 104.53917
PDOP 2.5

NOTES:

- 1) THIS SKETCH DOES NOT REPRESENT A BOUNDARY SURVEY.
- 2) THE DATUM FOR THE LATITUDES AND LONGITUDES ON THIS SKETCH IS NAD83.

