



SUPERIOR  
Black Lick, Pa.  
Mercer, Pa.  
Wooster, Ohio  
Cleveland, Ok.

# GAMMA RAY C.C.L. CEMENT BOND V.D.L.

Company SLAWSON EXPLORATION  
Well OUTLAW 16-11-66  
Field  
County WELD  
State COLORADO

Company SLAWSON EXPLORATION  
Well OUTLAW 16-11-66  
Field  
County WELD State COLORADO

Location: API # :  
SE1/4, SE1/4, SEC16,  
SEC 6 TWP 7N RGE 66W  
Permanent Datum  
Log Measured From 10 FT KB. Elevation  
Drilling Measured From  
Other Services  
K.B.  
D.F.  
G.L.

Date	01-OCT-2010										
Run Number	ONE										
Depth Driller											
Depth Logger	8030										
Bottom Logged Interval	8030										
Top Log Interval	6800										
Open Hole Size											
Type Fluid	WATER										
Density / Viscosity											
Max. Recorded Temp.											
Estimated Cement Top	7078										
Time Well Ready											
Time Logger on Bottom											
Equipment Number	703										
Location	45										
Recorded By	LEROY HOBBS										
Witnessed By	TOM DANIELSON										
Borehole Record					Tubing Record						
Run Number	Bit	From	To	Size		Weight	From	To			
Casing Record	Size		Wgt/Ft		Top		Bottom				
Surface String											
Prot. String	7"										
Production String	4-1/2										
Liner											

<<< Fold Here >>>

All interpretations are opinions based on inferences from electrical or other measurements and we cannot and do not guarantee the accuracy or correctness of any interpretation, and we shall not, except in the case of gross or willful negligence on our part, be liable or responsible for any loss, costs, damages, or expenses incurred or sustained by anyone resulting from any interpretation made by any of our officers, agents or employees. These interpretations are also subject to our general terms and conditions set out in our current Price Schedule.

## Comments

Database File: outlawcbl.db  
Dataset Pathname: pass2  
Presentation Format: nuexbond  
Dataset Creation: Tue Jan 01 01:05:27 2002 by Log Open-Cased 071220  
Charted by: Depth in Feet scaled 1:240

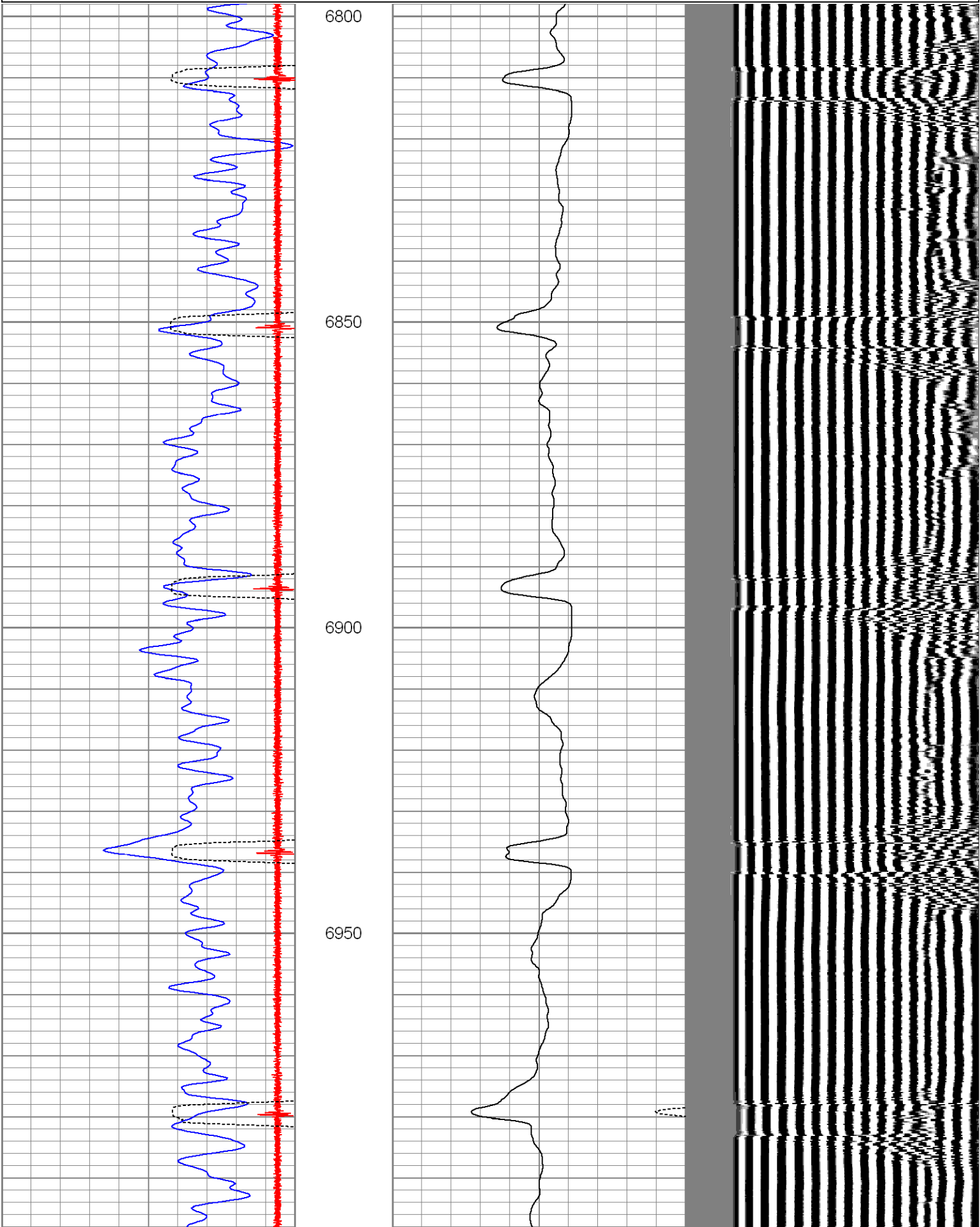
0	Gamma Ray (GAPI)	200
9	CCL	-0.5
240	TT3FT (usec)	340

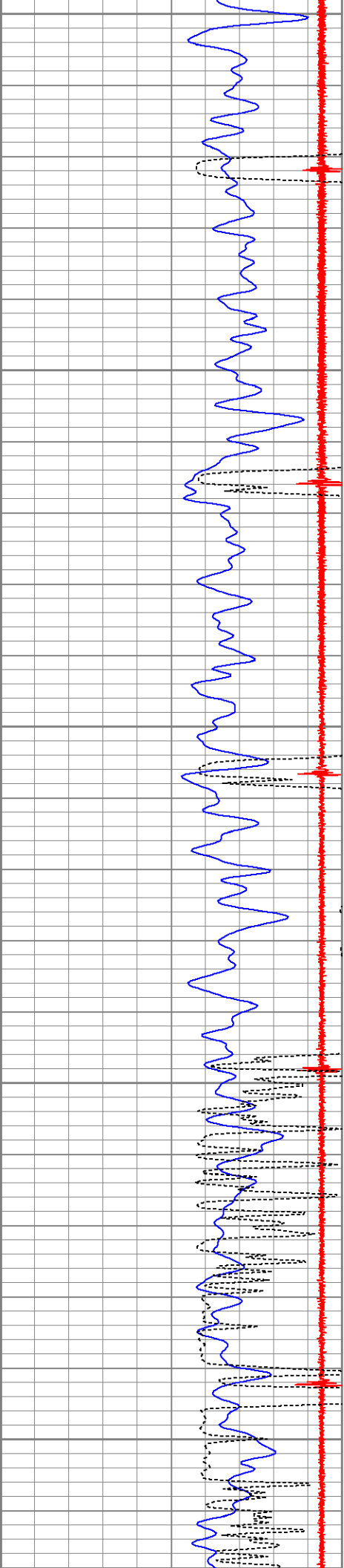
0	Amplified Amplitude (mV)	30
0	Amplitude (mV)	100

200

VDL

1200





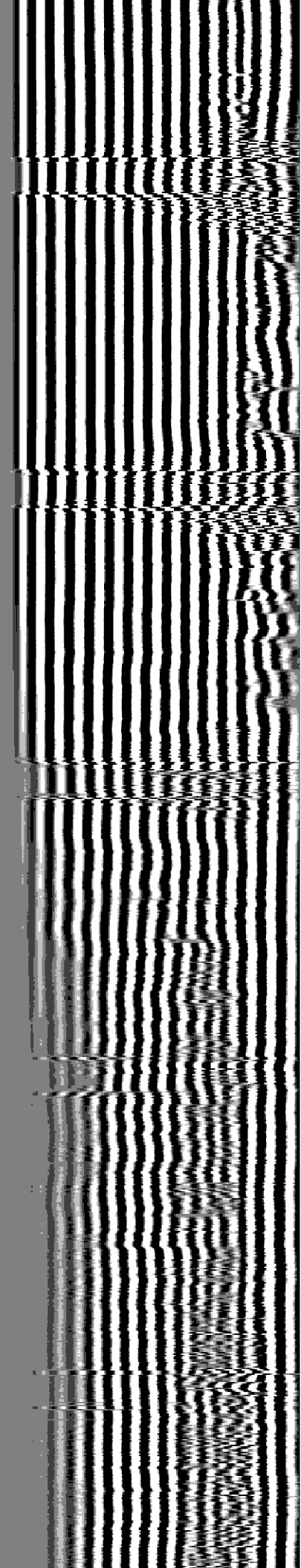
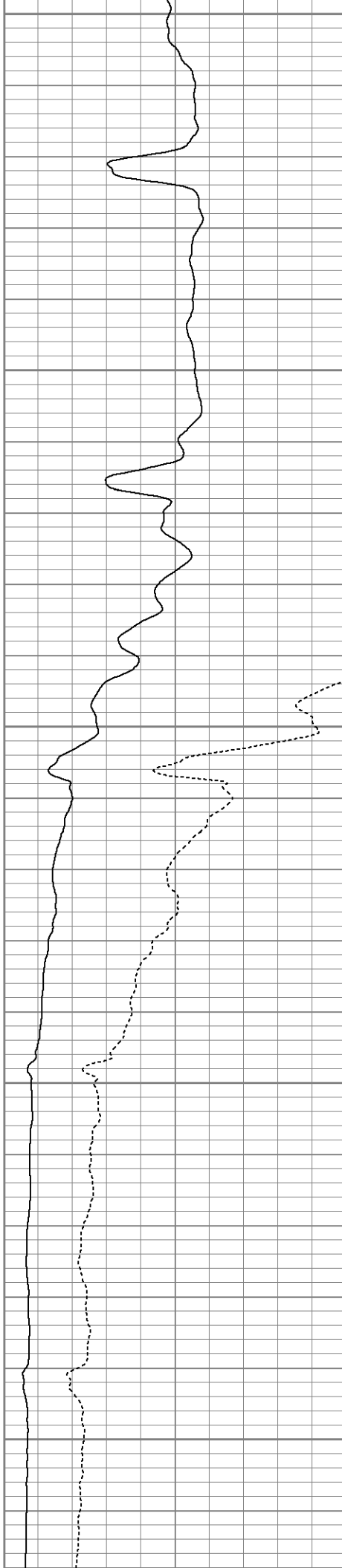
7000

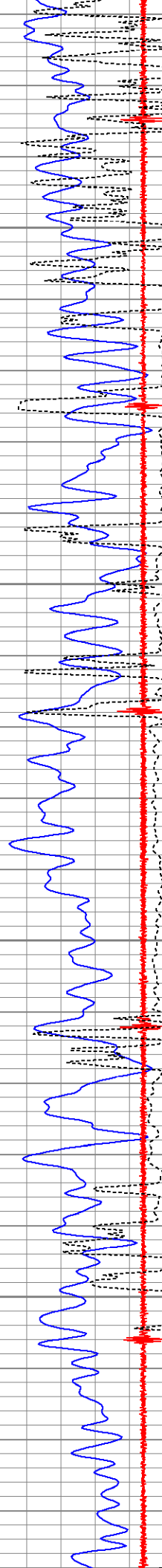
7050

7100

7150

7200



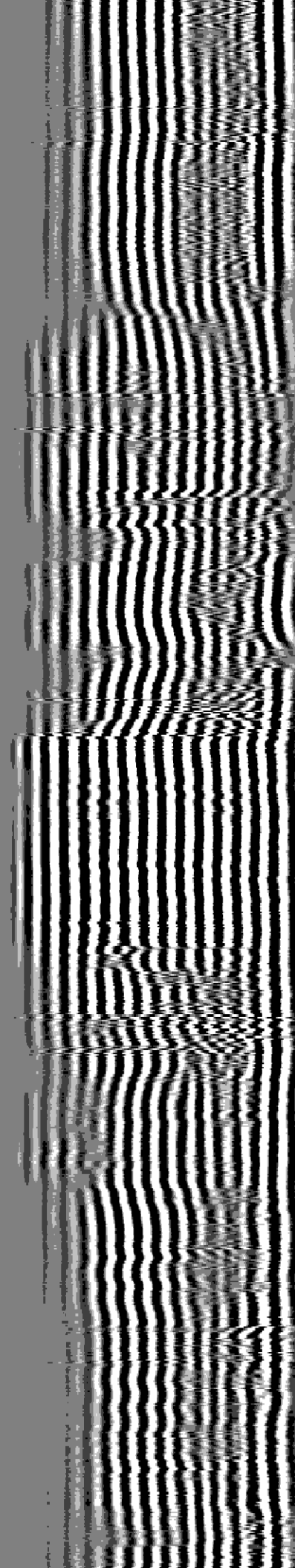
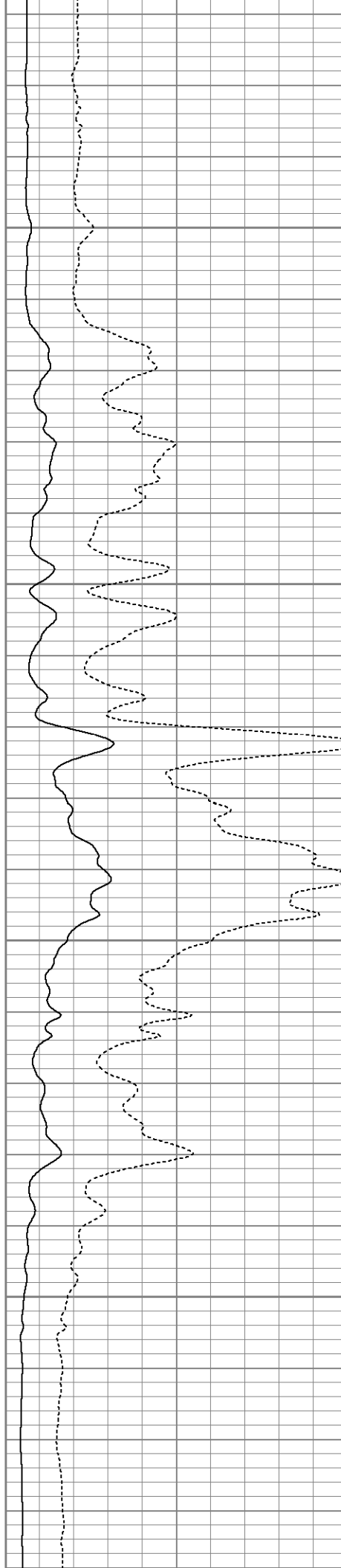


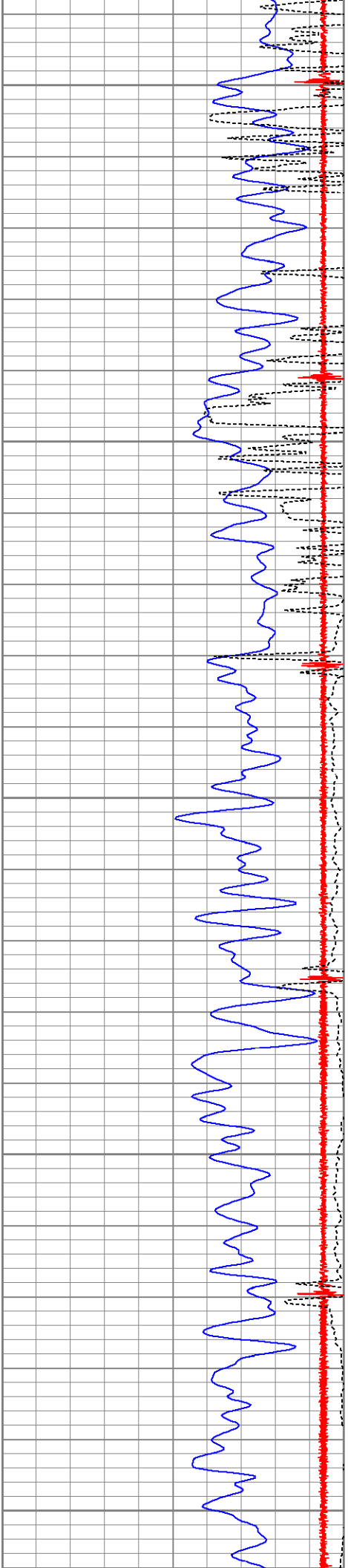
7250

7300

7350

7400





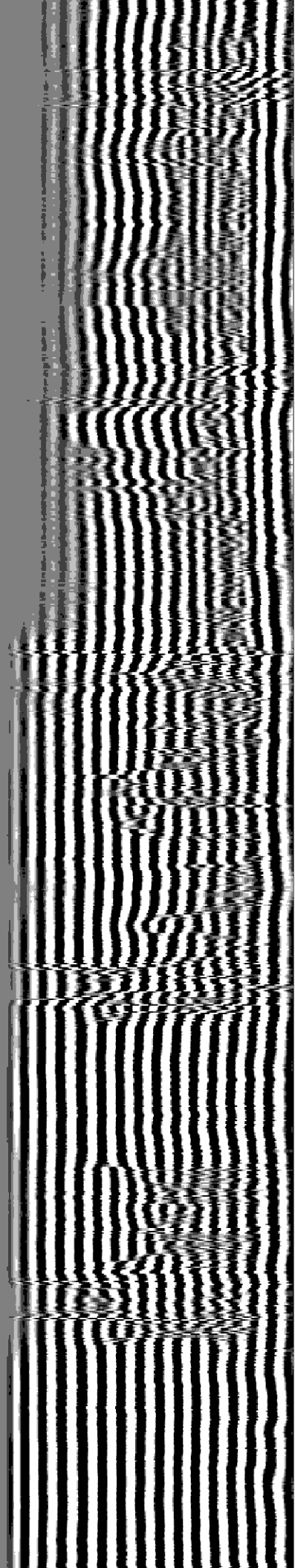
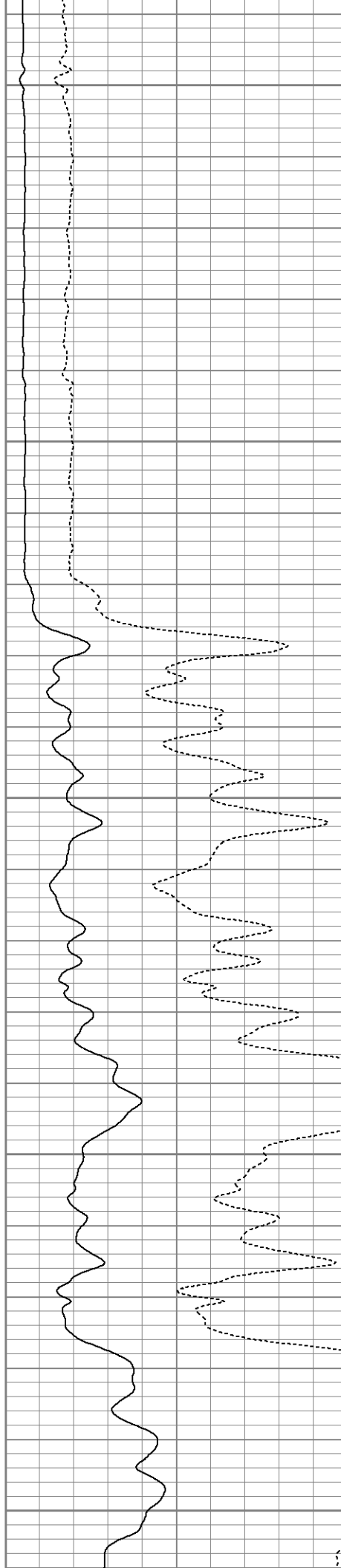
7450

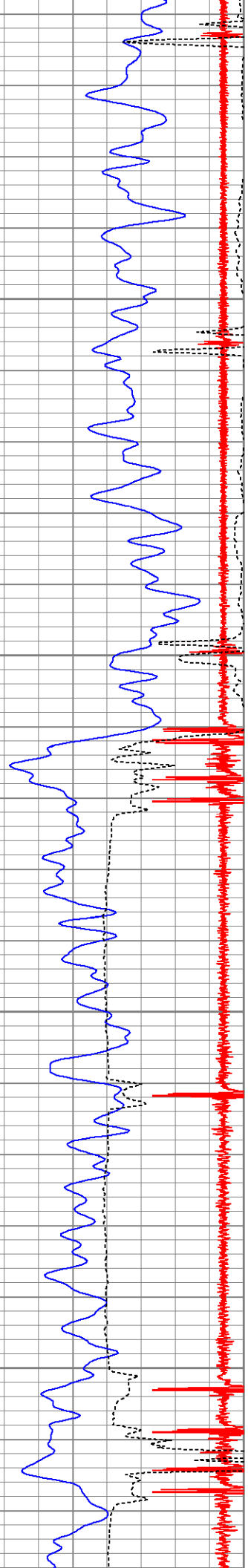
7500

7550

7600

7650





7700

7750

LINER HANGER

7800

7850

