

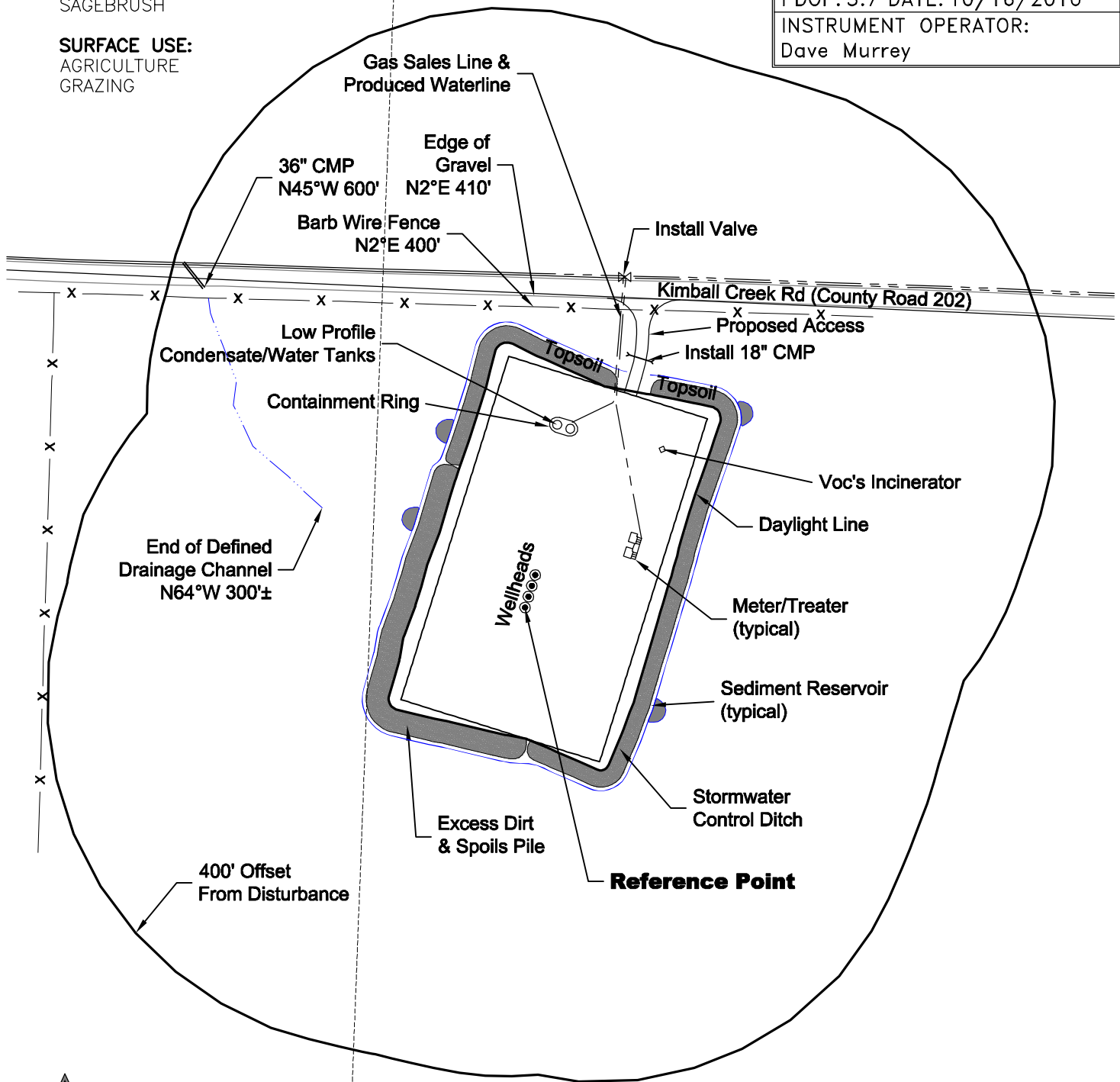
LOCATION DRAWING

VEGETATION:
GRASSES
RABBITBRUSH
SAGEBRUSH

SURFACE USE:
AGRICULTURE
GRAZING

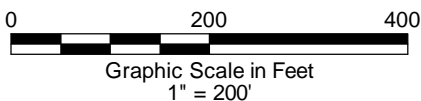
REFERENCE POINT

LATITUDE: 39.452360
LONGITUDE: -108.348526
FOOTAGE: 415 FNL 1117 FEL
GROUND ELEVATION: 5652.5
PDOP: 3.7 DATE: 10/16/2010
INSTRUMENT OPERATOR: Dave Murrey



DISTURBANCE ACREAGE:
4.7± DRILLING OPERATIONS
1.5± INTERIM RECLAIM

1/13/11



GEO SURV

LAND SURVEYING AND MAPPING
LAFAYETTE - WINTER PARK
Ph 303 666 0379 Fx 303 665 6320

LARAMIE ENERGY II LLC
HIGH LONESOME RANCH 17-01 PAD

NE1/4 NE1/4 SECTION 17 T7S R98W
6th PM GARFIELD COUNTY COLORADO