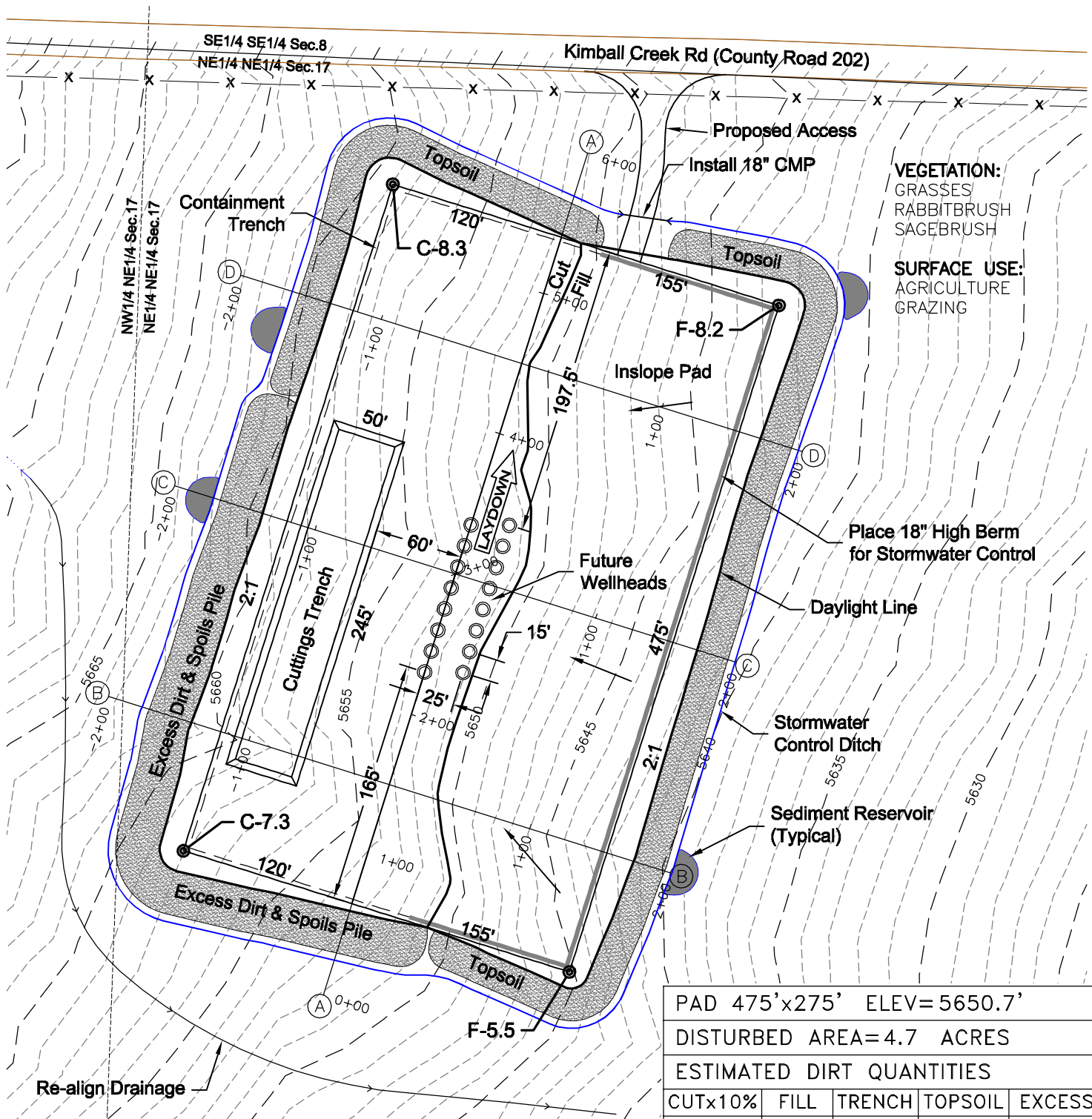


CONSTRUCTION LAYOUT DRAWING

1 of 3



NOTES:

- 1) 10% ALLOWANCE IS MADE FOR SOIL EXPANSION.
- 2) CUTTINGS TRENCH LOCATION & SIZE TO BE DETERMINED AT TIME OF CONSTRUCTION.
- 3.) SEDIMENT CONTAINMENT WILL BE ADJUSTED AFTER FINAL CONSTRUCTION.

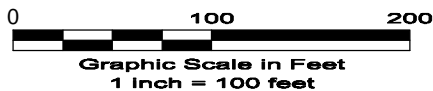
PAD 475'x275' ELEV=5650.7'				
DISTURBED AREA=4.7 ACRES				
ESTIMATED DIRT QUANTITIES				
CUTx10%	FILL	TRENCH	TOPSOIL	EXCESS
12,430	9,550	4,440	2,820	60

NOTE: VOLUMES IN CUBIC YARDS. TOPSOIL INCLUDED IN VOLUMES AT A DEPTH OF 6". TRENCH NOT INCLUDED IN TOTAL EXCESS.

1/5/11



North



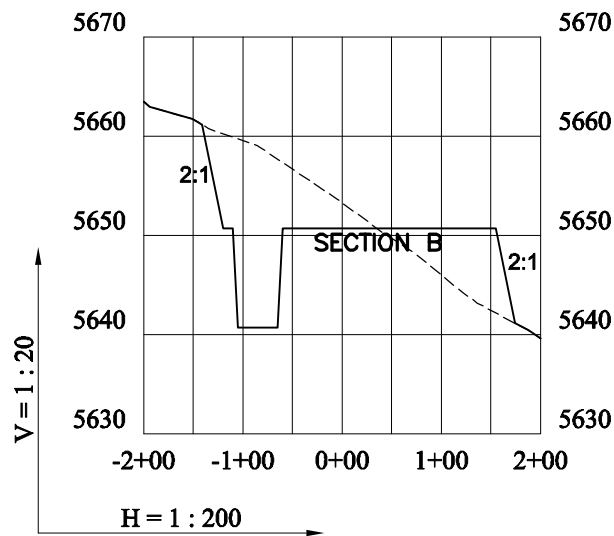
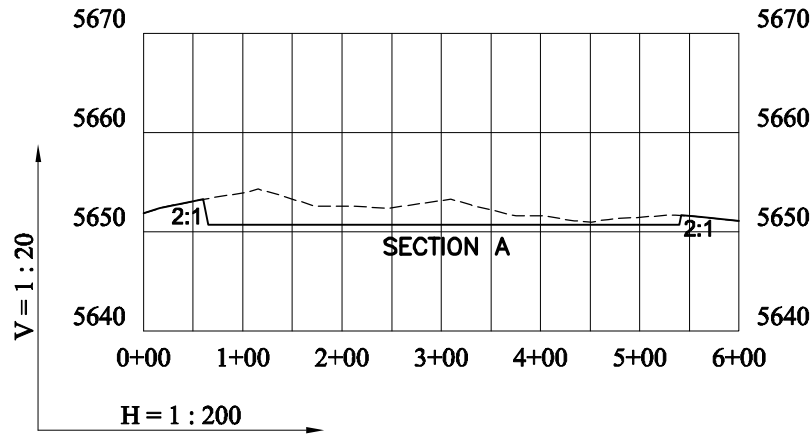
LAND SURVEYING AND MAPPING
LAFAYETTE - WINTER PARK
Ph 303 666 0379 Fx 303 665 6320

LARAMIE ENERGY II LLC
HIGH LONESOME RANCH 17-01 PAD

NE1/4 NE1/4 SECTION 17 T7S R98W
6th PM GARFIELD COUNTY COLORADO

CONSTRUCTION LAYOUT DRAWING

2 of 3



12/15/10

----- Existing Ground
 _____ Proposed Grade

GEO SURV

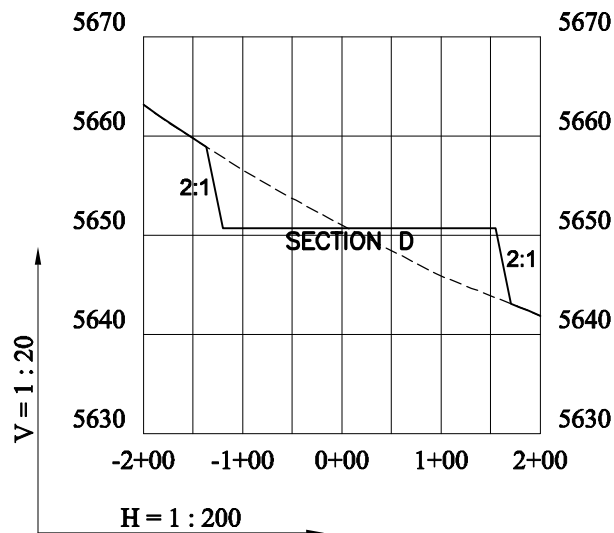
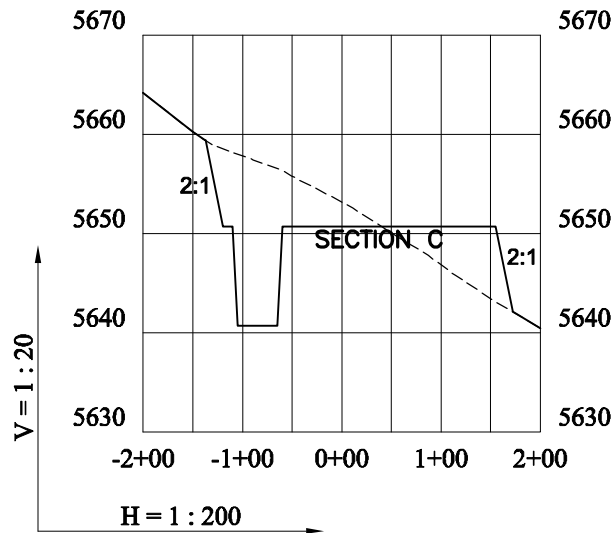
LAND SURVEYING AND MAPPING
 LAFAYETTE - WINTER PARK
 Ph 303 666 0379 Fx 303 665 6320

LARAMIE ENERGY II LLC
HIGH LONESOME RANCH 17-01 PAD

NE1/4 NE1/4 SECTION 17 T7S R98W
6th PM GARFIELD COUNTY COLORADO

CONSTRUCTION LAYOUT DRAWING

3 of 3



12/15/10

GEO SURV

LAND SURVEYING AND MAPPING
LAFAYETTE - WINTER PARK
Ph 303 666 0379 Fx 303 665 6320

LARAMIE ENERGY II LLC
HIGH LONESOME RANCH 17-01 PAD

NE1/4 NE1/4 SECTION 17 T7S R98W
6th PM GARFIELD COUNTY COLORADO

DWG: G:\GEO SURV\Laramie_high_lonesome\Well Plats\17-01 Pad\High Lonesome 17-01 F2A.dwg USER: MTC DATE: Dec 15, 2010 11:45am

----- Existing Ground

----- Proposed Grade