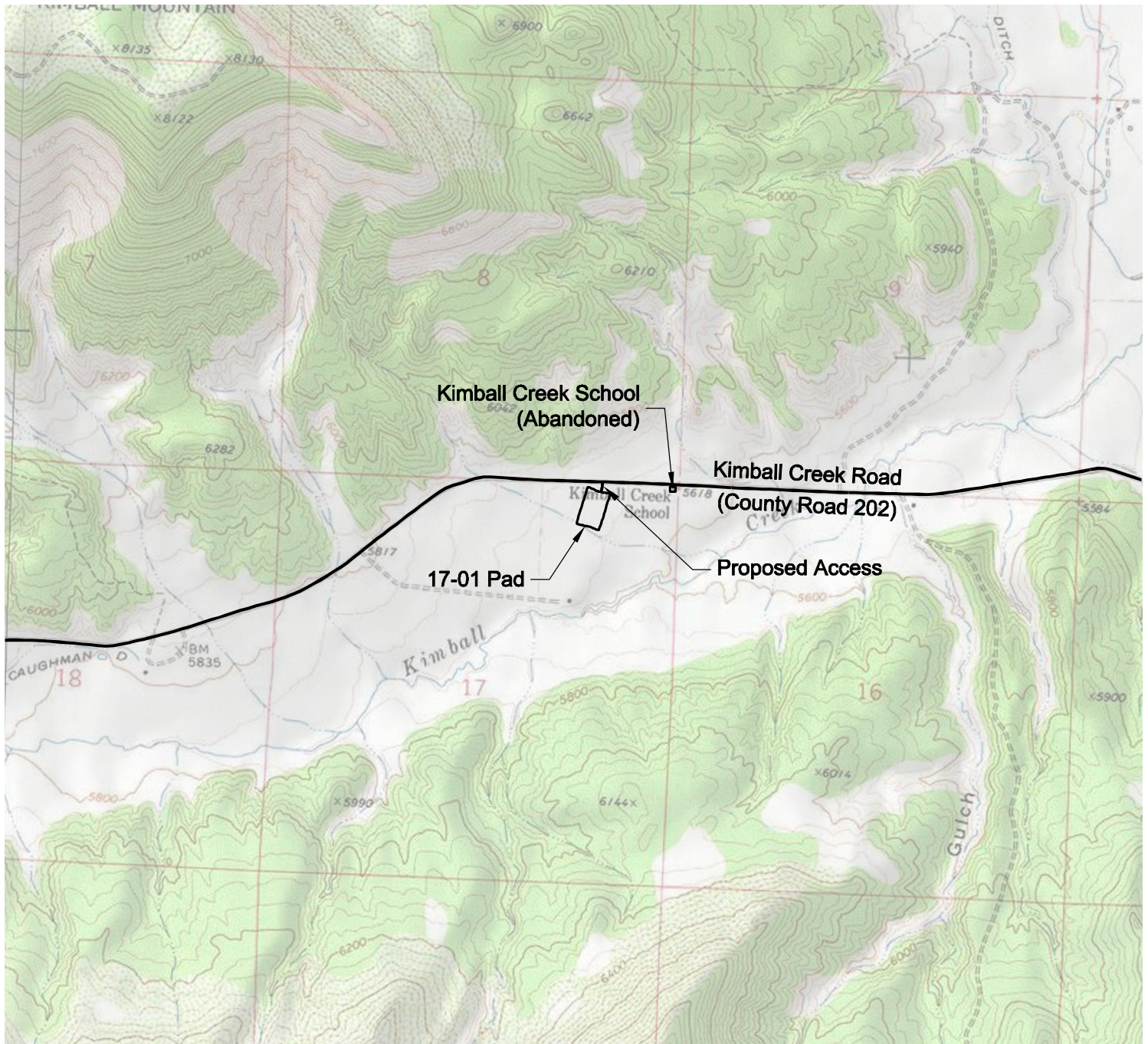


ACCESS ROAD MAP



DRIVING DIRECTIONS:

From I-70 Exit 62, the exit to DeBeque and the intersection of Roan Creek Road and I-70, travel north along Roan Creek Road, passing by the Town of Debeque, asphalt surface.

MP 3.95 - Mesa County / Garfield County line Garfield County Road 204.

MP 6.1 - T intersection with private gravel road known as Logan Wash Road, continue straight along CR 204, asphalt surface.

MP 8.3 - T intersection with gravel surfaced Conn Creek Road, CR 213, continue straight along CR 204 asphalt surface.

MP 10.9 - T intersection with Kimball Creek Road, CR 202. Turn left onto Kimball Creek Road, gravel surface.

MP 13.3 - access to Laramie Energy High Lonesome Ranch 17-01 pad, bear left onto pad.

12/15/10



North

0 2000 4000

Graphic Scale in Feet
1 inch = 2000 feet



LAND SURVEYING AND MAPPING
LAFAYETTE - WINTER PARK
Ph 303 666 0379 Fx 303 665 6320

LARAMIE ENERGY II LLC
HIGH LONESOME RANCH 17-01 PAD

NE1/4 NE1/4 SECTION 17 T7S R98W
6th PM GARFIELD COUNTY COLORADO