
OXY GRAND JUNCTION EBUSINESS

CC 697-17-14

Garfield County , Colorado

Cement Surface Casing

27-May-2010

Post Job Summary

The Road to Excellence Starts with Safety

The Road to Excellence Starts With Safety							
Sold To #: 344034		Ship To #: 2786054		Quote #:		Sales Order #: 7392317	
Customer: OXY GRAND JUNCTION EBUSINESS				Customer Rep: Sanchez, O.B			
Well Name: CC			Well #: 697-17-14			API/UWI #: 05-045-19279	
Field: GRAND VALLEY		City (SAP): PARACHUTE		County/Parish: Garfield		State: Colorado	
Lat: N 39.531 deg. OR N 39 deg. 31 min. 49.854 secs.				Long: W 108.233 deg. OR W -109 deg. 46 min. 0.466 secs.			
Contractor: H&P 330			Rig/Platform Name/Num: H&P 330				
Job Purpose: Cement Surface Casing							
Well Type: Development Well			Job Type: Cement Surface Casing				
Sales Person: DUNNING, DUSTIN			Srvc Supervisor: SMITH, DUSTIN			MBU ID Emp #: 418015	

Job Personnel

HES Emp Name	Exp Hrs	Emp #	HES Emp Name	Exp Hrs	Emp #	HES Emp Name	Exp Hrs	Emp #
ANGLESTEIN, TROY Edward WM	39	436099	ARNOLD, EDWARD John	39	439784	CHASTAIN, DERICK Allan	2.5	455848
DANIEL, EVERETT Dean	36.5	337325	DUBON, TODD N	36.5	443351	MUHLESTEIN, RYAN Herrick	39	453609
NELSON, RYAN Cody	36.5	386514	SMITH, DUSTIN Michael	2.5	418015			

Equipment

HES Unit #	Distance-1 way	HES Unit #	Distance-1 way	HES Unit #	Distance-1 way	HES Unit #	Distance-1 way
10025118	120 mile	10296148C	120 mile	10296152C	120 mile	10592964	120 mile
10741259	120 mile	10744549	120 mile	10784080	120 mile	10804567	120 mile
10804579	120 mile	10822535	120 mile	10856450	120 mile	10856464	120 mile
10867531	120 mile	10897797	120 mile	10951245	120 mile	10989685	120 mile

Job Hours

Date	On Location Hours	Operating Hours	Date	On Location Hours	Operating Hours	Date	On Location Hours	Operating Hours
05/25/10	4	1	05/26/10	24	9	05/27/10	13	4
TOTAL			Total is the sum of each column separately					

Job

Formation Name					Job Times			
Formation Depth (MD)	Top	Bottom			Called Out	Date	Time	Time Zone
Form Type	BHST				On Location	25 - May - 2010	18:00	MST
Job depth MD	2950. ft		Job Depth TVD	2950. ft	Job Started	25 - May - 2010	22:00	MST
Water Depth	Wk Ht Above Floor		4. ft		Job Completed	26 - May - 2010	04:40	MST
Perforation Depth (MD)	From	To			Job Completed	27 - May - 2010	11:19	MST
					Departed Loc	27 - May - 2010	13:00	MST

Well Data

Description	New / Used	Max pressure psig	Size in	ID in	Weight lbm/ft	Thread	Grade	Top MD ft	Bottom MD ft	Top TVD ft	Bottom TVD ft
Open Hole				14.75				.	2950.		
Surface Casing	New		9.625	8.921	36.			.	2927.		

Sales/Rental/3rd Party (HES)

Description	Qty	Qty uom	Depth	Supplier
PLUG,CMTG,TOP,9 5/8,HWE,8.16 MIN/9.06 MA	1	EA		

Tools and Accessories

Type	Size	Qty	Make	Depth	Type	Size	Qty	Make	Depth	Type	Size	Qty	Make
Guide Shoe					Packer					Top Plug	9 5/8	1	
Float Shoe					Bridge Plug					Bottom Plug			
Float Collar					Retainer					SSR plug set			
Insert Float										Plug Container	9 5/8	1	
Stage Tool										Centralizers			

Miscellaneous Materials

Gelling Agt	Conc	Surfactant	Conc	Acid Type	Qty	Conc	%
Treatment Fld	Conc	Inhibitor	Conc	Sand Type	Size	Qty	

Fluid Data

Stage/Plug #: 1									
Fluid #	Stage Type	Fluid Name	Qty	Qty uom	Mixing Density lbm/gal	Yield ft ³ /sk	Mix Fluid Gal/sk	Rate bbl/min	Total Mix Fluid Gal/sk
1	Fresh Water Spacer		20.00	bbl	8.33	.0	.0	6.0	
2	SUPER FLUSH 101	SUPER FLUSH 101 - SBM (12199)	20.00	bbl	10.	.0	.0	6.0	
3	Fresh Water		20.00	bbl	8.33	.0	.0	6.0	
4	Lead Cement	VERSACEM (TM) SYSTEM (452010)	1210.0	sacks	12.3	2.33	12.62	6.0	12.62
	12.62 Gal	FRESH WATER							
5	Tail Cement	VERSACEM (TM) SYSTEM (452010)	110.0	sacks	12.8	2.07	10.67	6.0	10.67
	10.67 Gal	FRESH WATER							
6	Fresh Water Displacement		222.00	bbl	8.33	.0	.0	6.0	
7	Topout	HALCEM (TM) SYSTEM (452986)	1100	sacks	12.5	1.97	10.96	2.5	10.96
	10.96 Gal	FRESH WATER							
Calculated Values		Pressures		Volumes					
Displacement	222.3	Shut In: Instant		Lost Returns	825	Cement Slurry	931	Pad	
Top Of Cement	SURFACE	5 Min		Cement Returns	7	Actual Displacement	222.3	Treatment	
Frac Gradient		15 Min		Spacers	60	Load and Breakdown		Total Job	1213.3
Rates									
Circulating		Mixing	6	Displacement	6	Avg. Job			6
Cement Left In Pipe	Amount	51 ft	Reason	Shoe Joint					
Frac Ring # 1 @	ID	Frac ring # 2 @	ID	Frac Ring # 3 @	ID	Frac Ring # 4 @	ID		
The Information Stated Herein Is Correct				Customer Representative Signature					

The Road to Excellence Starts with Safety

Sold To #: 344034		Ship To #: 2786054		Quote #:		Sales Order #: 7392317	
Customer: OXY GRAND JUNCTION EBUSINESS				Customer Rep: Sanchez, O.B			
Well Name: CC			Well #: 697-17-14			API/UWI #: 05-045-19279	
Field: GRAND VALLEY		City (SAP): PARACHUTE		County/Parish: Garfield		State: Colorado	
Legal Description:							
Lat: N 39.531 deg. OR N 39 deg. 31 min. 49.854 secs.				Long: W 108.233 deg. OR W -109 deg. 46 min. 0.466 secs.			
Contractor: H&P 330			Rig/Platform Name/Num: H&P 330				
Job Purpose: Cement Surface Casing						Ticket Amount:	
Well Type: Development Well			Job Type: Cement Surface Casing				
Sales Person: DUNNING, DUSTIN			Srvc Supervisor: SMITH, DUSTIN			MBU ID Emp #: 418015	

Activity Description	Date/Time	Cht #	Rate bbl/min	Volume bbl		Pressure psig		Comments
				Stage	Total	Tubing	Casing	
Call Out	05/25/2010 18:00							
Arrive At Loc	05/25/2010 22:00							Rig running casing
Pre-Rig Up Safety Meeting	05/25/2010 22:10							
Rig-Up Equipment	05/25/2010 22:15							
Pre-Job Safety Meeting	05/26/2010 04:30							
Start Job	05/26/2010 04:43							TD-2950' TP-2927' SJ-51' CASING 9 5/8" 36# HOLE 14 3/4"
Other	05/26/2010 04:44			1.5			30.0	Fill Lines
Test Lines	05/26/2010 04:46						3000.0	
Pump Spacer 1	05/26/2010 04:50		4	20			90.0	Fresh Water
Pump Spacer 2	05/26/2010 04:55		4	20			135.0	Super Flush
Pump Spacer 1	05/26/2010 05:00		6.5	20			198.0	Fresh water
Pump Lead Cement	05/26/2010 05:10		6.5	502.1			270.0	1210 sks 12.3 ppg 2.33 yield 12.62 gal/sk
Pump Tail Cement	05/26/2010 06:40		6.5	40.6			280.0	110 sks 12.8 ppg 2.07 yield 10.67 gal/sk
Shutdown	05/26/2010 06:47							
Drop Top Plug	05/26/2010 06:48							
Pump Displacement	05/26/2010 06:49		6.5	222.3			474.0	Fresh water
Slow Rate	05/26/2010 07:23		4	207			395.0	

Activity Description	Date/Time	Cht #	Rate bbl/min	Volume bbl		Pressure psig		Comments
				Stage	Total	Tubing	Casing	
Slow Rate	05/26/2010 07:24		2	212			380.0	
Bump Plug	05/26/2010 07:29		2	222.3			1500.0	
Check Floats	05/26/2010 07:45							Floats held
Other	05/26/2010 08:14		2	10		515.0		Clear Parasite
End Job	05/26/2010 08:20							No returns during job. Pipe static during job. SuperFlush truck on location 16 hours.
Start Job	05/26/2010 09:46							Top out
Other	05/26/2010 09:47			1				Fill Lines
Pump Cement	05/26/2010 09:50		2.5	61.4		65.0		175 sks 12.5 ppg 1.97 yield 10.96 gal/sk
Clean Lines	05/26/2010 10:14			2				Clear iron and tubing
End Job	05/26/2010 10:15							No cement to surface
Start Job	05/26/2010 12:49							
Other	05/26/2010 12:49			1				Fill Lines
Pump Cement	05/26/2010 12:54		2.5	61.4		65.0		175 sks 12.5 ppg 1.97 yield 10.96 gal/sk
Clean Lines	05/26/2010 13:18			2				Clear iron and tubing
End Job	05/26/2010 13:19							No cement to surface
Start Job	05/26/2010 15:48							
Other	05/26/2010 15:49			1				Fill Lines
Pump Cement	05/26/2010 15:55		2.5	61.4		65.0		175 sks 12.5 ppg 1.97 yield 10.96 gal/sk
Clean Lines	05/26/2010 16:19			2				Clear iron and tubing
End Job	05/26/2010 16:21							No cement to surface
Start Job	05/26/2010 17:57							
Other	05/26/2010 17:58			1				Fill Lines
Pump Cement	05/26/2010 18:00		2.5	61.4		82.0		175 sks 12.5 ppg 1.97 yield 10.96 gal/sk

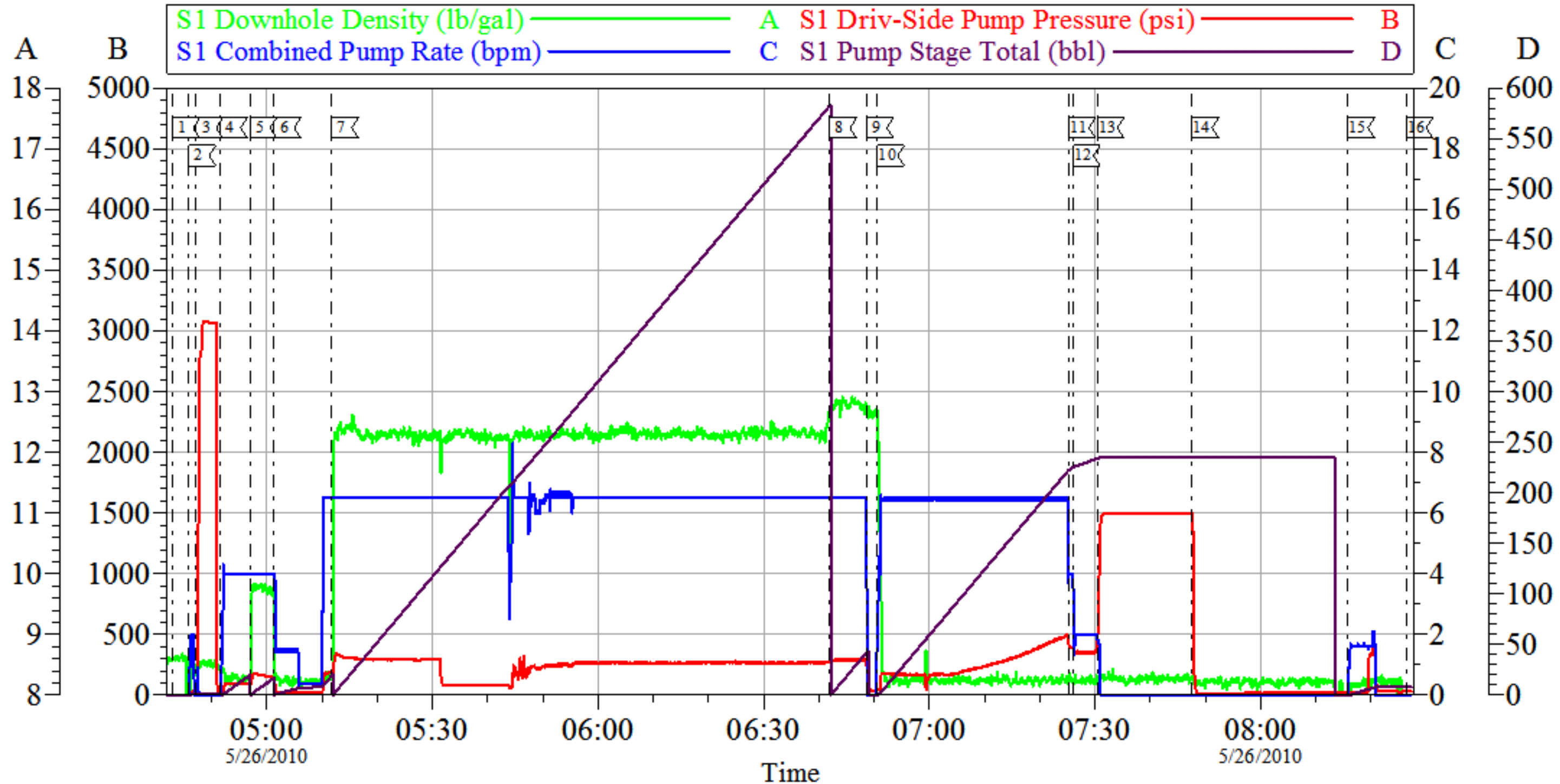
Activity Description	Date/Time	Cht #	Rate bbl/min	Volume bbl		Pressure psig		Comments
				Stage	Total	Tubing	Casing	
Clean Lines	05/26/2010 18:23			2				Clear iron and tubing
End Job	05/26/2010 18:25							No cement to surface
Start Job	05/27/2010 01:38							
Other	05/27/2010 01:39			1				Fill Lines
Pump Cement	05/27/2010 01:43		2.5	61.4		85.0		175 sks 12.5 ppg 1.97 yield 10.96 gal/sk
Clean Lines	05/27/2010 02:08			2				Clear iron and tubing
End Job	05/27/2010 02:09							No cement to surface
Start Job	05/27/2010 04:25							
Other	05/27/2010 04:26			1				Fill Lines
Pump Cement	05/27/2010 04:27		2.5	61.4		64.0		175 sks 12.5 ppg 1.97 yield 10.96 gal/sk
Clean Lines	05/27/2010 04:52			2				Clear iron and tubing
End Job	05/27/2010 04:53							No cement to surface
Start Job	05/27/2010 10:50							
Other	05/27/2010 10:50							FILL LINES
Pressure Test	05/27/2010 10:50					2000.0		PRESSURE TEST OK
Pump Cement	05/27/2010 11:00		2.5	20		50.0		50 SKS 12.5 PPG 1.97 YIELD 10.96 GAL/SK
Clean Lines	05/27/2010 11:18			1				
End Job	05/27/2010 11:19							GOT CEMENT TO SURFACE 13 BBLS INTO TOP OUT PUMPED REST OF TUB CEMENT HOLDING NOT FALLING BACK
Pre-Rig Down Safety Meeting	05/27/2010 11:50							ALL HES EMPLOYEES
Rig-Down Equipment	05/27/2010 12:00							
Pre-Convoy Safety Meeting	05/27/2010 12:30							ALL HES EMPLOYEES

Cementing Job Log

Activity Description	Date/Time	Cht #	Rate bbl/ min	Volume bbl		Pressure psig		Comments
				Stage	Total	Tubing	Casing	
Crew Leave Location	05/27/2010 13:00							THANK YOU FOR USING HALLIBURTON DUSTIN SMITH AND CREW

OXY

9 5/8" Surface



Customer: OXY
Well Description: CC 697-17-14
Company Rep: OB Sanchez

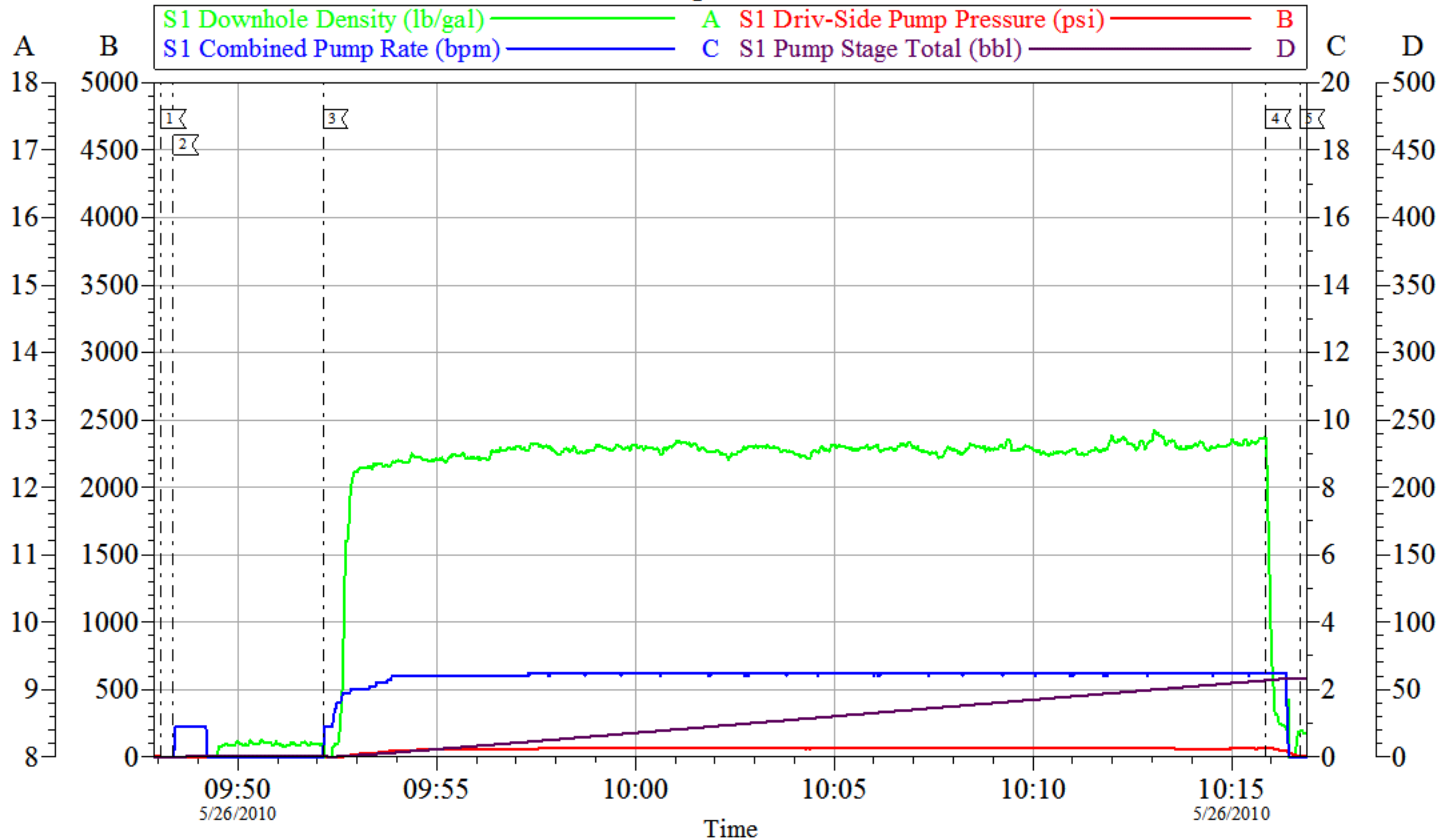
Job Date: 26-May-2010
Job Type: Surface
Cement Supervisor: Ryan Nelson

Sales Order #: 7392317
ADC Used: Yes
Elite #: 1/Ryan Muhlstein

OptiCem v6.4.0
26-May-10 08:46

OXY

Top Out #1



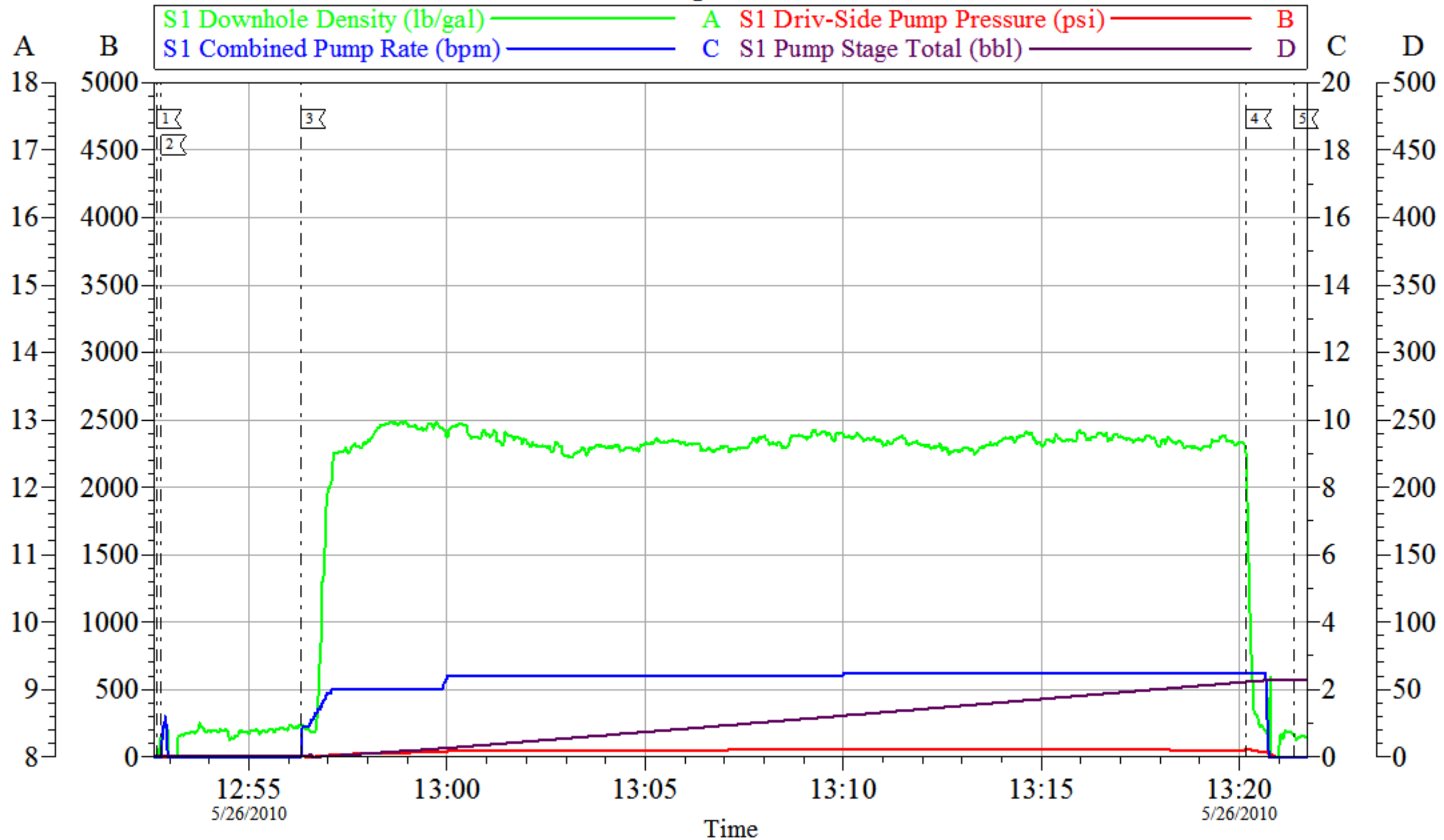
Local Event Log					
1	Start Job	09:48:04	2	Fill Lines	09:48:23
3	Pump Cement	09:52:09	4	Clear Lines	10:15:52
5	End Job	10:16:43			

Customer: OXY	Job Date: 26-May-2010	Sales Order #: 7392317
Well Description: CC 697-17-14	Job Type: Top out	ADC Used: Yes
Company Rep: OB Sanchez	Cement Supervisor: Ryan Nelson	Elite #: 1/Ryan Muhlstein

OptiCem v6.4.0
26-May-10 10:29

OXY

Top Out #2



Local Event Log					
1	Start Job	12:52:40	2	Fill Lines	12:52:47
3	Pump Cement	12:56:18			
4	Clear Lines	13:20:10	5	End Job	13:21:22

Customer: OXY
Well Description: CC 697-17-14
Company Rep: OB Sanchez

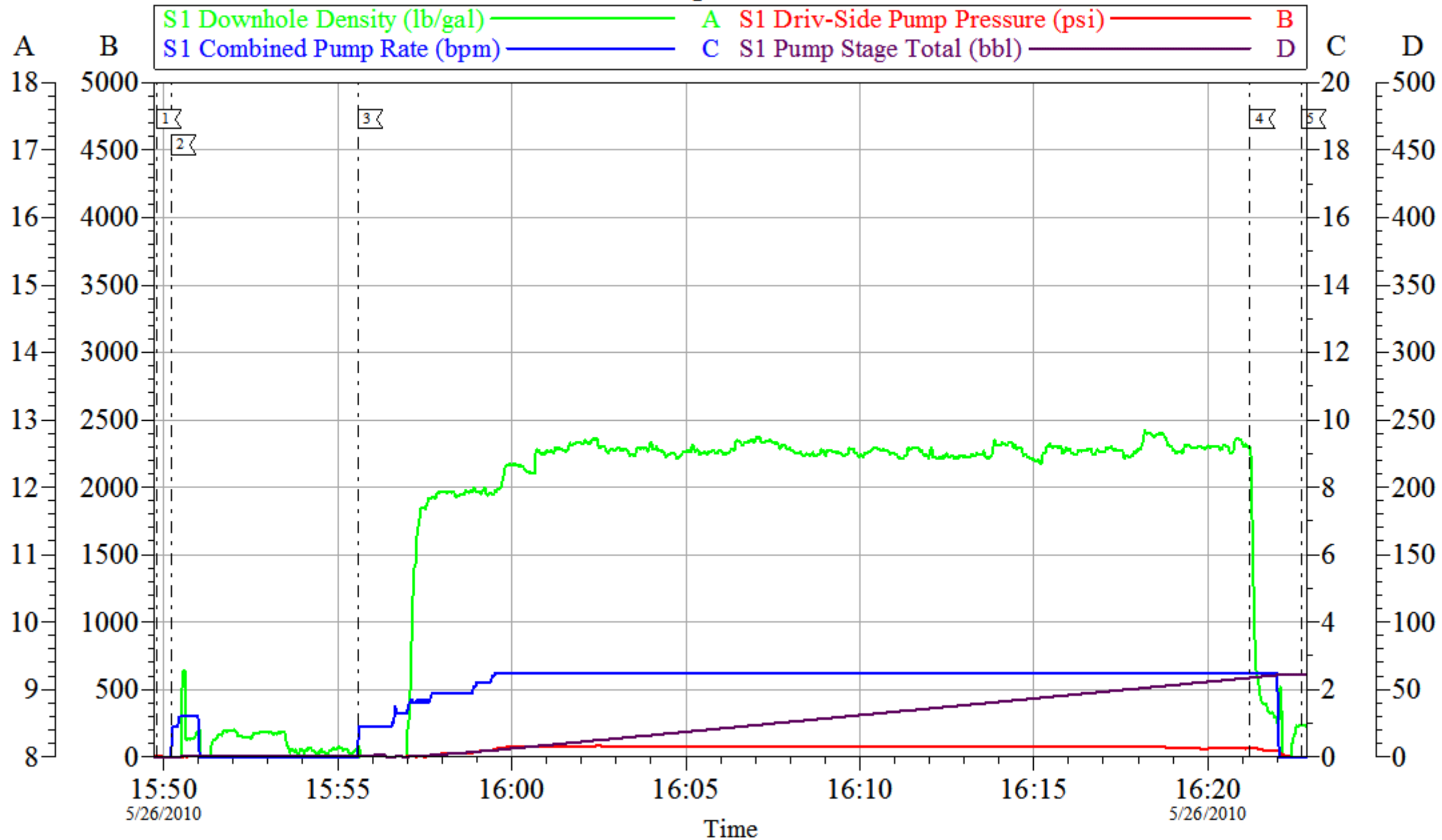
Job Date: 26-May-2010
Job Type: Top out
Cement Supervisor: Ryan Nelson

Sales Order #: 7392317
ADC Used: Yes
Elite #: 1/Todd Dubon

OptiCem v6.4.0
26-May-10 13:25

OXY

Top Out #3



Local Event Log					
1	Start Job	15:49:48	2	Fill Lines	15:50:13
3	Pump Cement	15:55:35	4	Clear Lines	16:21:13
5	End Job	16:22:40			

Customer: OXY
Well Description: CC 697-17-14
Company Rep: OB Sanchez

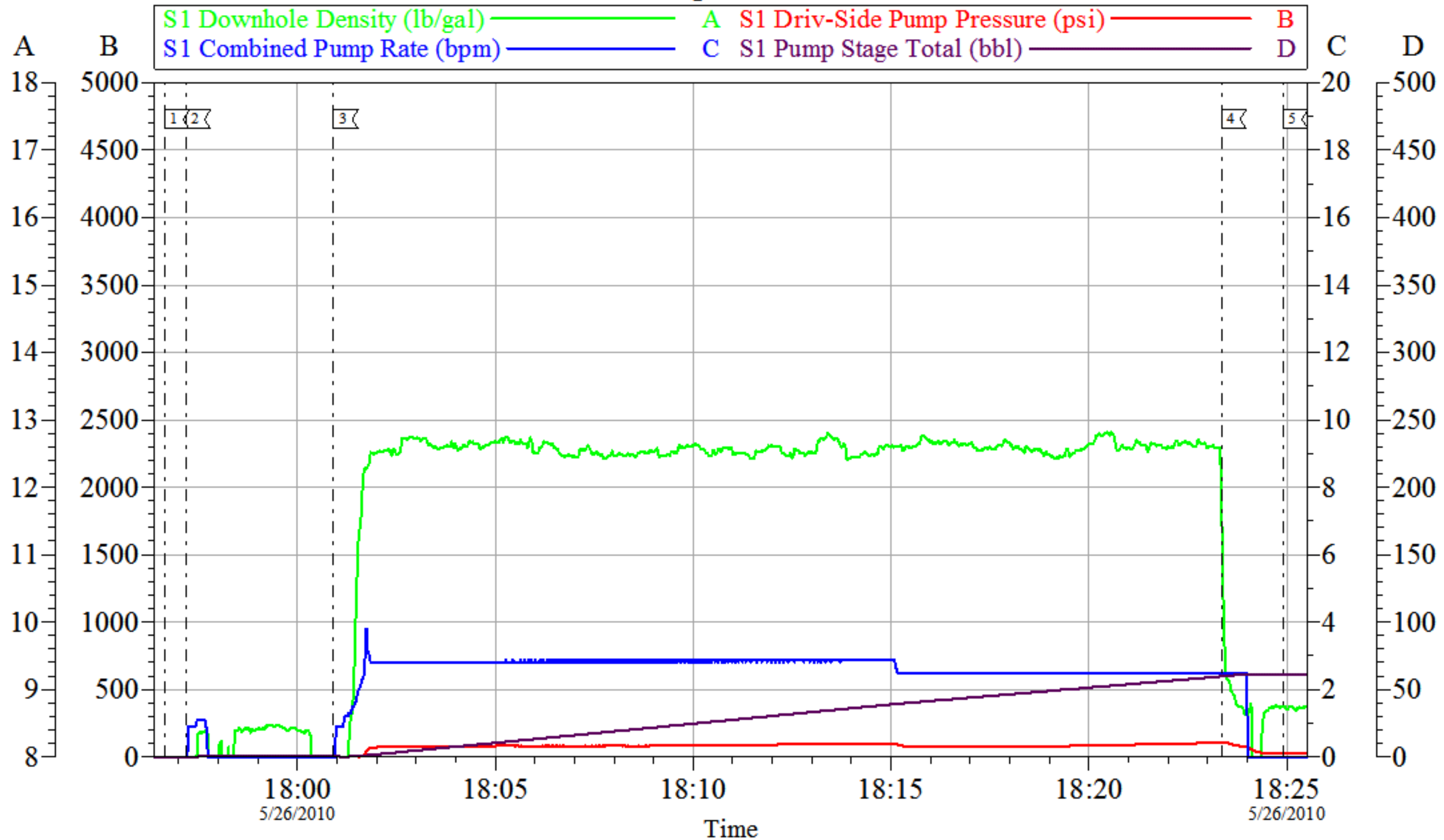
Job Date: 26-May-2010
Job Type: Top Out
Cement Supervisor: Ryan Nelson

Sales Order #: 7392317
ADC Used: Yes
Elite #: 9/Ryan Muhlstein

OptiCem v6.4.0
26-May-10 16:28

OXY

Top Out #4



Customer: OXY
 Well Description: CC 697-17-14
 Company Rep: OB Sanchez

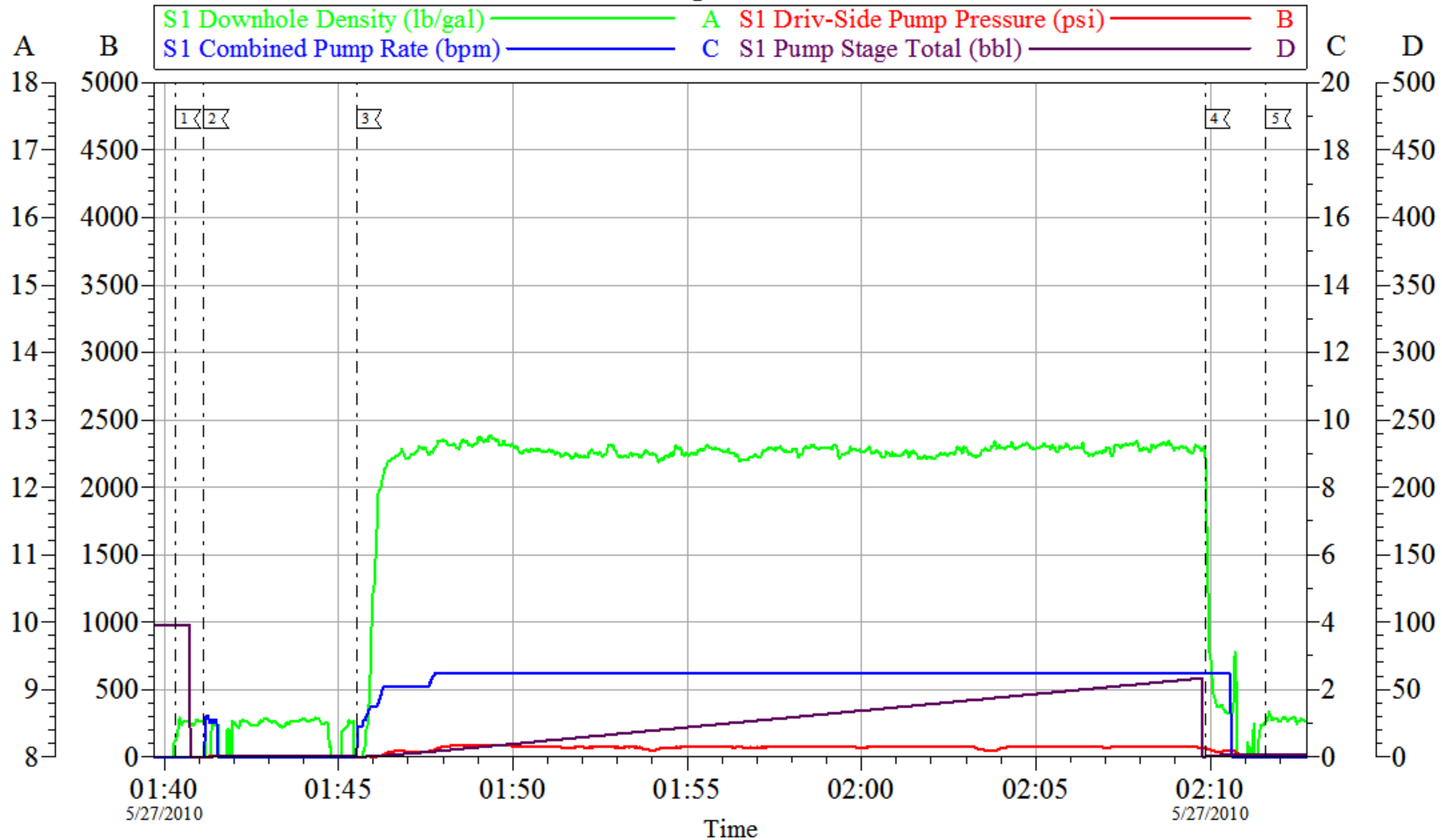
Job Date: 26-May-2010
 Job Type: Top Out
 Cement Supervisor: Ryan Nelson

Sales Order #: 7392317
 ADC Used: Yes
 Elite #: 9/Ryan Muhlstein

OptiCem v6.4.0
 26-May-10 18:36

OXY

Top Out #5

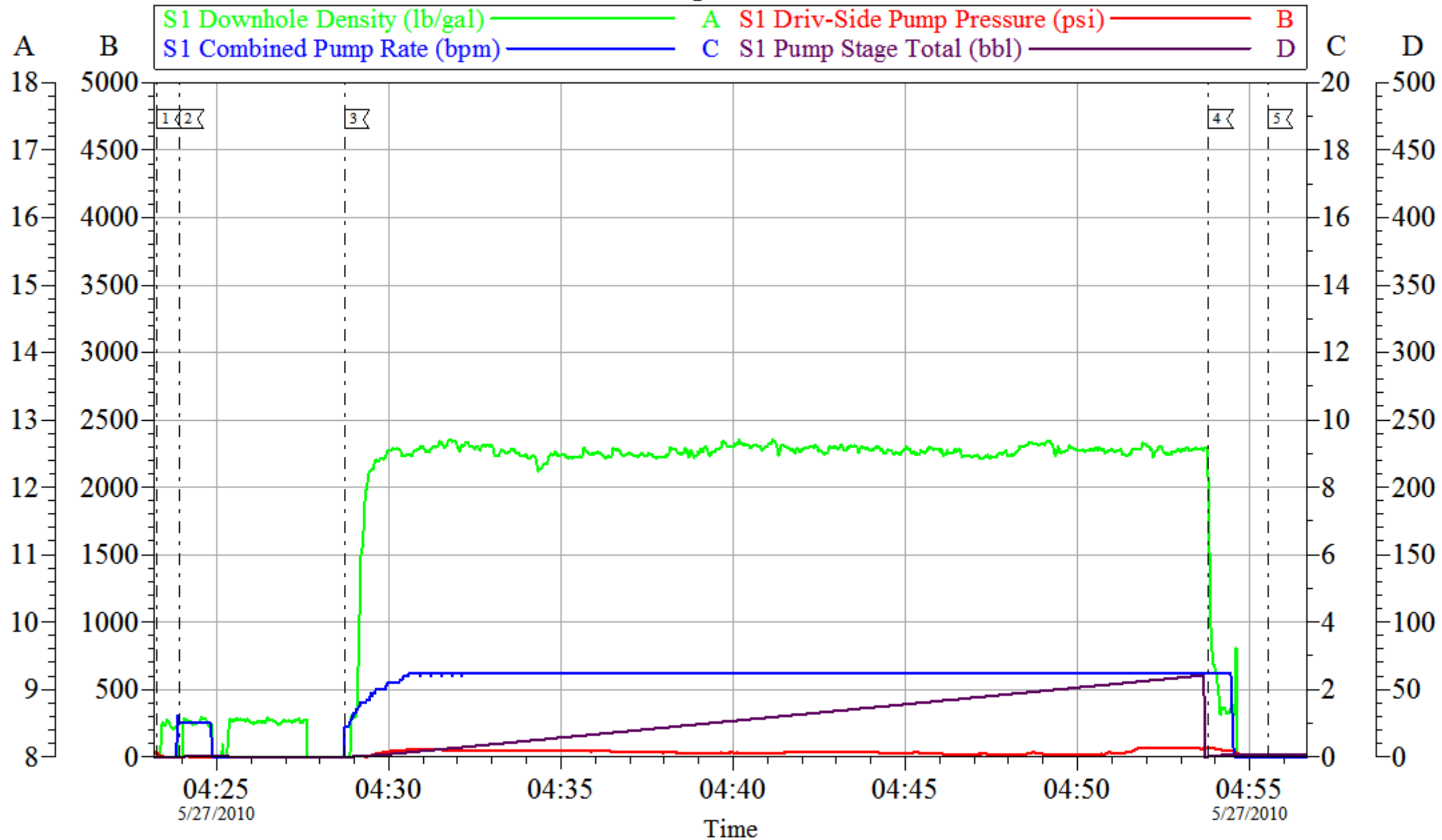


Local Event Log			
1	Start Job	01:40:20	2
2	Fill lines	01:41:08	3
3	Pump Cement	01:45:32	4
4	Clear Lines	02:09:51	5
5	End Job	02:11:36	

Customer: OXY	Job Date: 27-May-2010	Sales Order #: 7392317
Well Description: CC 697-17-14	Job Type: Top Out	ADC Used: Yes
Company Rep: OB Sanchez	Cement Supervisor: Ryan Nelson	Elite #: 9/Ryan Muhlstein

OXY

Top Out #6



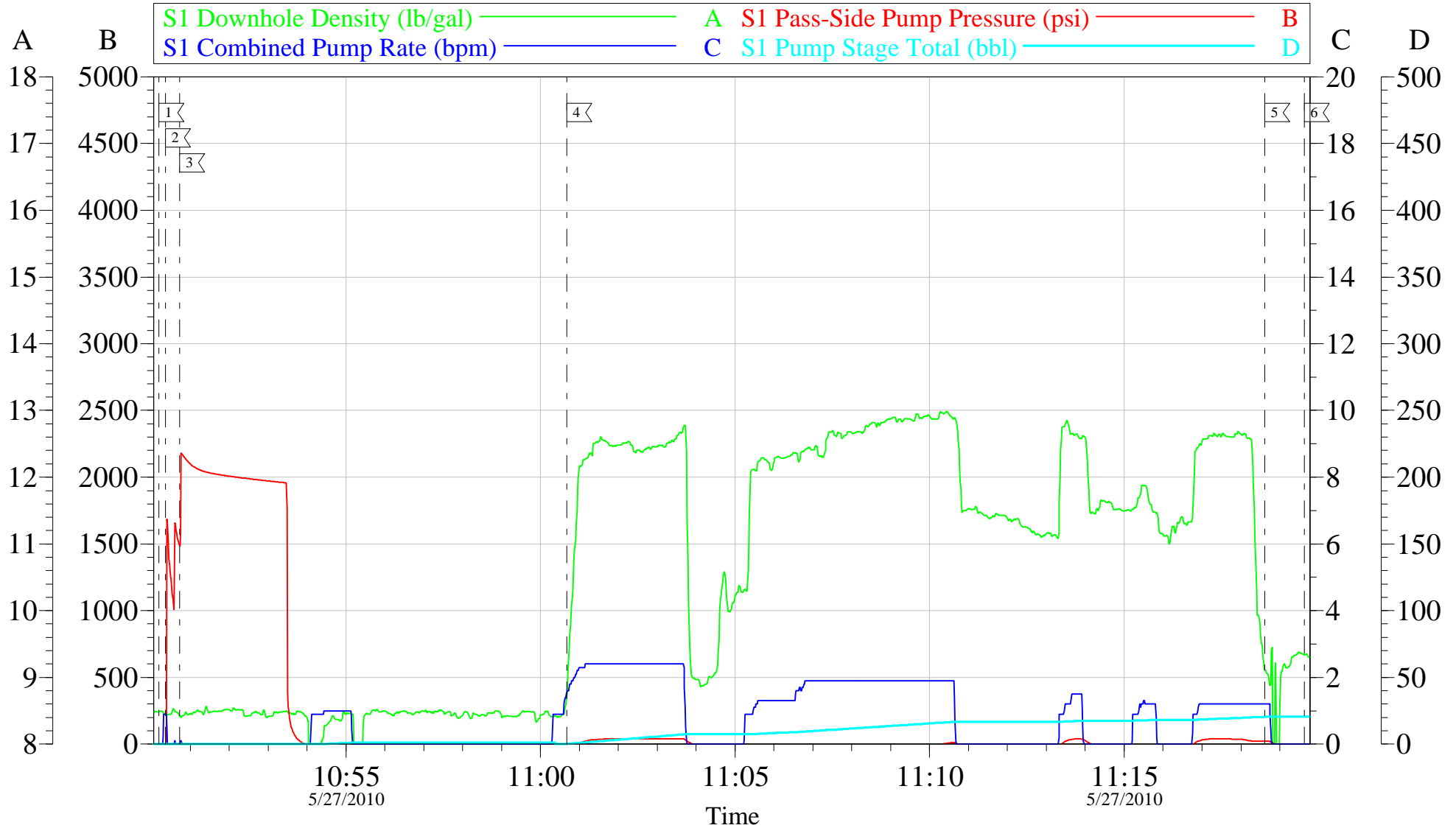
Customer: OXY
Well Description: CC 697-17-14
Company Rep: OB Sanchez

Job Date: 27-May-2010
Job Type: Top Out
Cement Supervisor: Ryan Nelson

Sales Order #: 7392317
ADC Used: Yes
Elite #: 9/Todd Dubon

OptiCem v6.4.0
27-May-10 05:05

OXY TOP OUT # 7



Customer: OXY	Job Date: 27-May-2010	Sales Order #: 7392317
Well Description: CC 697-17-14	Job Type: TOP OUT	ADC Used: YES
Company Rep: OB SANCHEZ	Cement Supervisor: DUSTIN SMITH	Elite #: 9 RYAN MUHLESTEIN

OptiCem v6.4.8
27-May-10 11:34