
OXY GRAND JUNCTION EBUSINESS

**CC 697-08-64B
GRAND VALLEY
Garfield County , Colorado**

Cement Surface Casing
08-Aug-2010

Job Site Documents

The Road to Excellence Starts with Safety

Sold To #: 344034	Ship To #: 2787820	Quote #:	Sales Order #: 7545820
Customer: OXY GRAND JUNCTION EBUSINESS	Customer Rep: Benevides, Simon		
Well Name: CC	Well #: 697-08-64B	API/UWI #: 05-045-17573	
Field: GRAND VALLEY	City (SAP): PARACHUTE	County/Parish: Garfield	State: Colorado
Lat: N 39.531 deg. OR N 39 deg. 31 min. 50.398 secs.	Long: W 108.233 deg. OR W -109 deg. 46 min. 0.451 secs.		
Contractor: OXY	Rig/Platform Name/Num: H&P 330		
Job Purpose: Cement Surface Casing			
Well Type: Development Well	Job Type: Cement Surface Casing		
Sales Person: DUNNING, DUSTIN	Srvs Supervisor: LEIST, JAMES	MBU ID Emp #: 362787	

Job Personnel

HES Emp Name	Exp Hrs	Emp #	HES Emp Name	Exp Hrs	Emp #	HES Emp Name	Exp Hrs	Emp #
BRUN, JUSTIN M	6	459269	LEIST, JAMES R	6	362787	LYNGSTAD, FREDRICK D	6	403742
SALAZAR, PAUL Omar	6	445614	SLAUGHTER, JESSE Dean	6	454315	SMITH, DUSTIN Michael	6	418015
ZUMWALT, ORVILLE Raymond	6	398157						

Equipment

HES Unit #	Distance-1 way	HES Unit #	Distance-1 way	HES Unit #	Distance-1 way	HES Unit #	Distance-1 way
10296152C	120 mile	10822535	120 mile	10856450	120 mile	10856464	120 mile
10867094	120 mile	10867322	120 mile	10897797	120 mile	10897925	120 mile
10938677	120 mile	10938678	120 mile	10973565	120 mile	10988964	120 mile
10998512	120 mile	11259882	120 mile				

Job Hours

Date	On Location Hours	Operating Hours	Date	On Location Hours	Operating Hours	Date	On Location Hours	Operating Hours
8-8-10	11	6						
TOTAL			Total is the sum of each column separately					

Job

Formation Name	Top	Bottom	Called Out	Date	Time	Time Zone
Formation Depth (MD)			On Location	08 - Aug - 2010	06:00	MST
Form Type		BHST	Job Started	08 - Aug - 2010	12:43	MST
Job depth MD	2683. ft	Job Depth TVD	Job Completed	08 - Aug - 2010	17:15	MST
Water Depth		Wk Ht Above Floor	Departed Loc	08 - Aug - 2010	20:00	MST
Perforation Depth (MD)	From	To				

Well Data

Description	New / Used	Max pressure psig	Size in	ID in	Weight lbm/ft	Thread	Grade	Top MD ft	Bottom MD ft	Top TVD ft	Bottom TVD ft
-------------	------------	-------------------	---------	-------	---------------	--------	-------	-----------	--------------	------------	---------------

Sales/Rental/3rd Party (HES)

Description	Qty	Qty uom	Depth	Supplier
PLUG, CMTG, TOP, 9 5/8, HWE, 8.16 MIN/9.06 MA	1	EA		

Tools and Accessories

Type	Size	Qty	Make	Depth	Type	Size	Qty	Make	Depth	Type	Size	Qty	Make
Guide Shoe					Packer					Top Plug	9.625	1	
Float Shoe					Bridge Plug					Bottom Plug			
Float Collar					Retainer					SSR plug set			
Insert Float										Plug Container	9.625	1	
Stage Tool										Centralizers			

Miscellaneous Materials

Gelling Agt	Conc	Surfactant	Conc	Acid Type	Qty	Conc	%
Treatment Fld	Conc	Inhibitor	Conc	Sand Type	Size		Qty

Fluid Data									
Stage/Plug #: 1									
Fluid #	Stage Type	Fluid Name	Qty	Qty uom	Mixing Density lbm/gal	Yield ft ³ /sk	Mix Fluid Gal/sk	Rate bbl/min	Total Mix Fluid Gal/sk
1	WATER SPACER		20	bbl	8.33	.0	.0	.0	
2	SUPER FLUSH 101	SUPER FLUSH 101 - SBM (12199)	30	bbl	10.	.0	.0	.0	
3	WATER SPACER		20	bbl	.	.0	.0	.0	
4	Lead Cement	VERSACEM (TM) SYSTEM (452010)	1030	sacks	12.3	2.33	12.62		12.62
	12.62 Gal	FRESH WATER							
5	Tail Cement	VERSACEM (TM) SYSTEM (452010)	160	sacks	12.8	2.07	10.67		10.67
	10.67 Gal	FRESH WATER							
6	DISPLACEMENT		203	bbl	.	.0	.0	.0	
7	Topout Cement	HALCEM (TM) SYSTEM (452986)	79	sacks	12.7	1.97	10.96		10.96
	10.96 Gal	FRESH WATER							
Calculated Values		Pressures		Volumes					
Displacement	203	Shut In: Instant		Lost Returns	739	Cement Slurry		Pad	
Top Of Cement	SURFACE	5 Min		Cement Returns	3	Actual Displacement	203	Treatment	
Frac Gradient		15 Min		Spacers	70	Load and Breakdown		Total Job	
Rates									
Circulating	4	Mixing	6	Displacement	6	Avg. Job	6		
Cement Left In Pipe	Amount	45.15 ft	Reason	Shoe Joint					
Frac Ring # 1 @	ID	Frac ring # 2 @	ID	Frac Ring # 3 @	ID	Frac Ring # 4 @	ID		
The Information Stated Herein Is Correct				Customer Representative Signature					

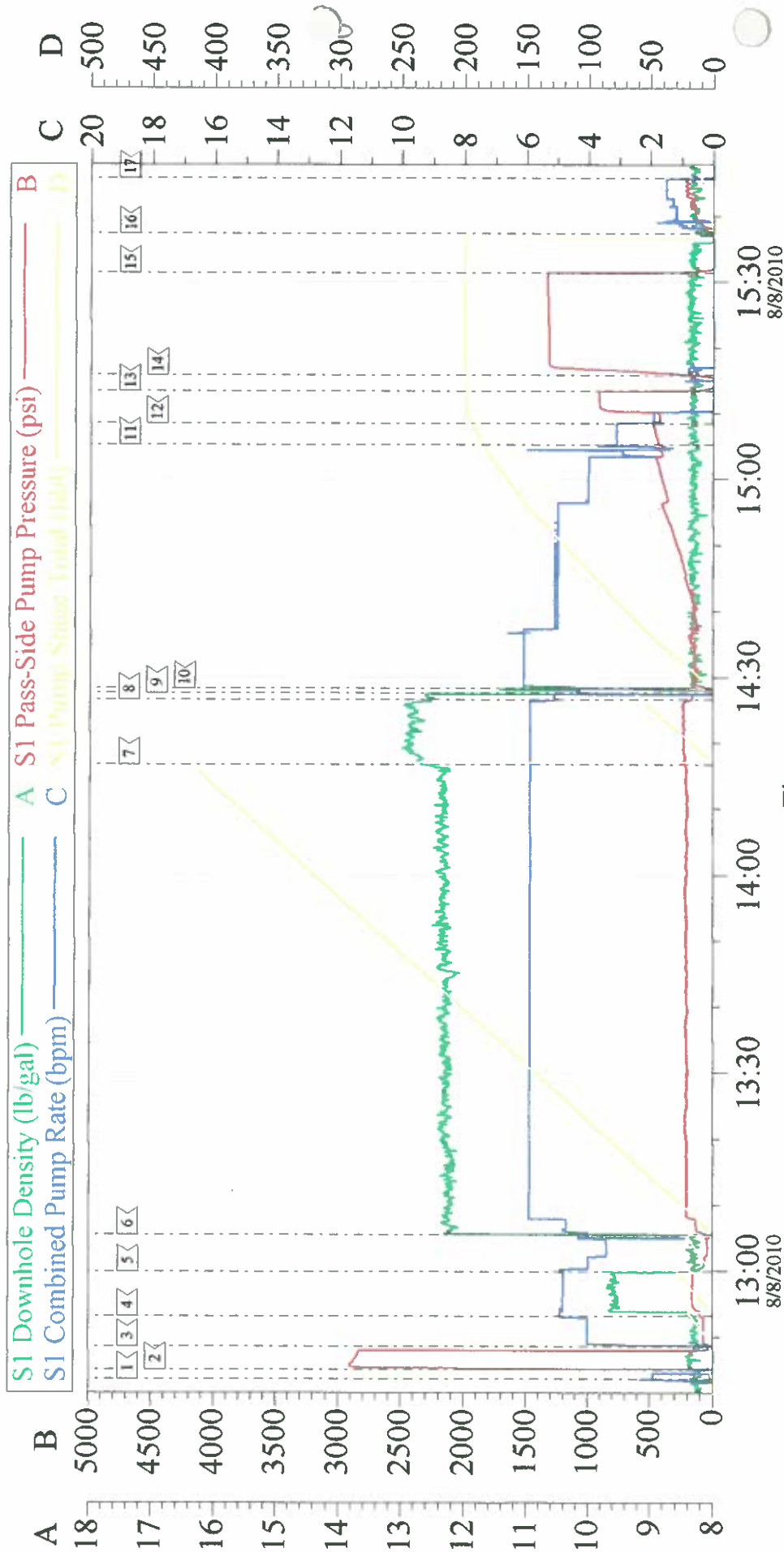
The Road to Excellence Starts with Safety

Sold To #: 344034	Ship To #: 2787820	Quote #:	Sales Order #: 7545820
Customer: OXY GRAND JUNCTION EBUSINESS	Customer Rep: Benevides, Simon		
Well Name: CC	Well #: 697-08-64B	API/UWI #: 05-045-17573	
Field: GRAND VALLEY	City (SAP): PARACHUTE	County/Parish: Garfield	State: Colorado
Legal Description:			
Lat: N 39.531 deg. OR N 39 deg. 31 min. 50.398 secs.		Long: W 108.233 deg. OR W -109 deg. 46 min. 0.451 secs.	
Contractor: OXY	Rig/Platform Name/Num: H&P 330		
Job Purpose: Cement Surface Casing			Ticket Amount:
Well Type: Development Well		Job Type: Cement Surface Casing	
Sales Person: DUNNING, DUSTIN		Srv Supervisor: LEIST, JAMES	MBU ID Emp #: 362787

Activity Description	Date/Time	Cht #	Rate bbl/ min	Volume bbl		Pressure psig		Comments
				Stage	Total	Tubing	Casing	
Call Out	08/08/2010 01:00							
Pre-Convoy Safety Meeting	08/08/2010 03:00							WITH ALL HES PERSONNEL
Crew Leave Yard	08/08/2010 03:15							TP-2683.29, TD-2700, S.J.-45.15, HOLE-14 3/4, MUD#-9.4, CENT- 15
Arrive At Loc	08/08/2010 06:00							
Assessment Of Location Safety Meeting	08/08/2010 06:30							WITH ALL HES PERSONNEL
Pre-Rig Up Safety Meeting	08/08/2010 06:40							WITH ALL HES PERSONNEL
Pre-Job Safety Meeting	08/08/2010 12:25							WITH ALL ON LOCATION PERSONNEL
Rig-Up Completed	08/08/2010 12:40							RIG CIRULATED FOR 1.5 HOURS, AT 4 BBLS/MIN WITH NO PRESSURE, NEVER REGAINED RETURNS AFTER SHUTDOWN TO HOOK UP CMT
Start Job	08/08/2010 12:43							NO CIRULATION DURING JOB, NO PIPE MOVEMENT DURING JOB
Pressure Test	08/08/2010 12:45							2895 PSI
Pump Spacer 1	08/08/2010 12:48		5	20	20		70.0	FRESH WATER
Pump Spacer 2	08/08/2010 12:53		5	30	30		160.0	SUPERFLUSH, TRANSPORT WAS ON LOCATION AT 0600 AND LEFT AT 1600

Activity Description	Date/Time	Cht #	Rate bbl/min	Volume bbl		Pressure psig		Comments
				Stage	Total	Tubing	Casing	
Pump Spacer 1	08/08/2010 12:59		5	20	20		92.0	FRESH WATER
Pump Lead Cement	08/08/2010 13:05		5	420	420		234.0	1030 SKS 12.3 PPG 2.33 YIELD 12.62 GAL/SK
Pump Tail Cement	08/08/2010 14:16		5	58.9	58.9		235.0	160 SKS 12.8 PPG 2.07 YIELD 10.67 GAL/SK
Shutdown	08/08/2010 14:26							
Drop Top Plug	08/08/2010 14:27							AWAY
Pump Displacement	08/08/2010 14:28		5	203.9	203.9		450.0	FRESH WATER
Slow Rate	08/08/2010 15:05		2	193.9	193.9		435.0	TO BUMP PLUG
Bump Plug	08/08/2010 15:08		2	203.9	203.9		880.0	PLUG BUMPED
Check Floats	08/08/2010 15:13							THE FLOATS ARE HOLDING
Comment	08/08/2010 15:31							PRESSURE TEST CASING TO 1500 PSI HOLD FOR 15 MINUTES, THEN PUMPED 10 BBLS SUGAR WATER THROUGH PARASITE STRING
Pump Cement	08/08/2010 17:00		2.5	28			27.0	RAN 10 FT OF 1 INCH PIPE 79 SKS, 12.7 PPG, 1.97 FT3/SK, 10.96 GAL/SK
Shutdown	08/08/2010 17:14							
End Job	08/08/2010 17:15							
Pre-Rig Down Safety Meeting	08/08/2010 18:00							WITH ALL HES PERSONNEL
Rig-Down Completed	08/08/2010 19:00							
Pre-Convoy Safety Meeting	08/08/2010 19:30							WITH ALL HES PERSONNEL
Crew Leave Location	08/08/2010 20:00							
Comment	08/08/2010 20:00							THANKYOU FOR USING HALLIBURTON CEMENT, JAMES LEIST AND CREW

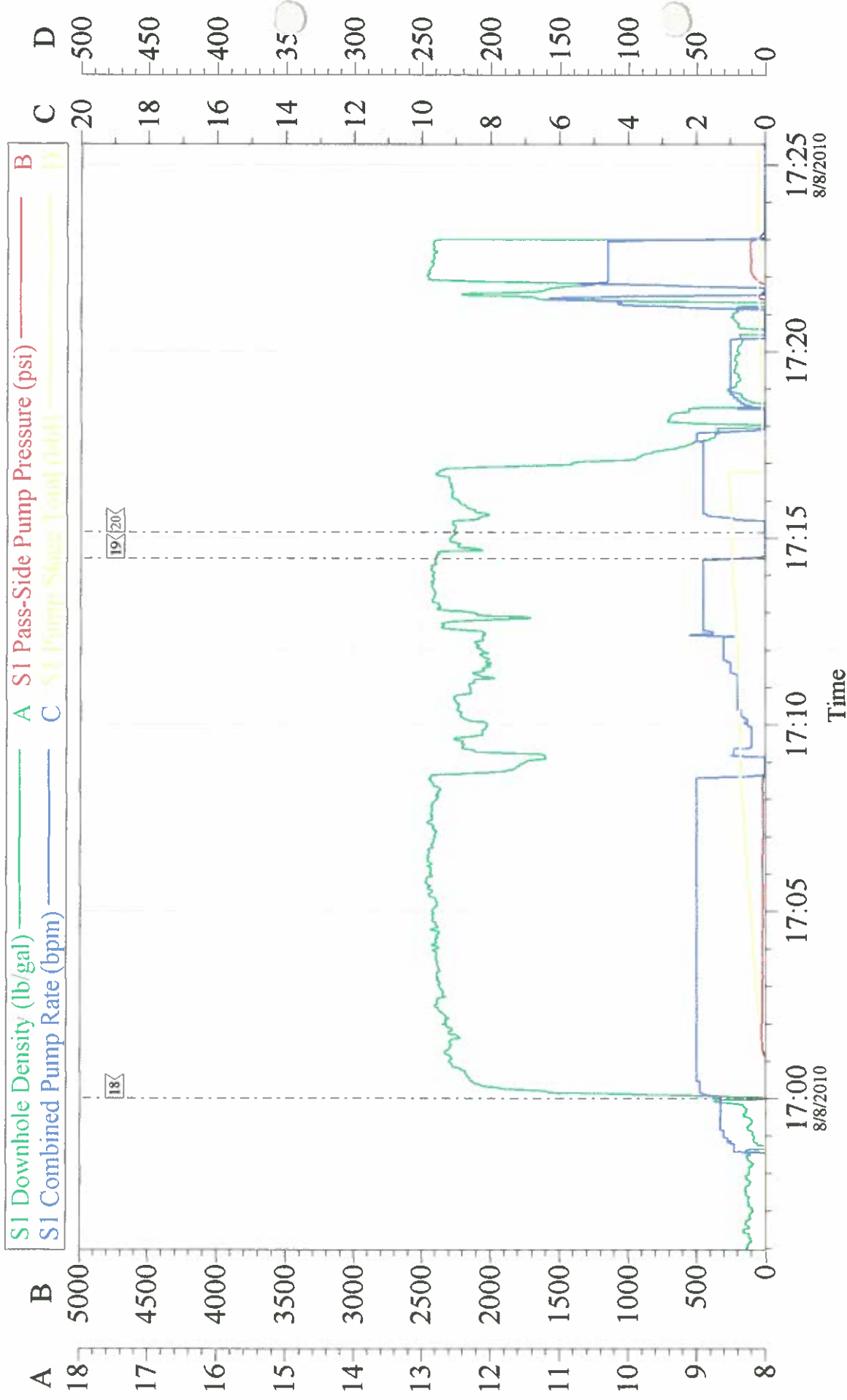
OXY 9 5/8 SURFACE PIPE



Local Event Log			
1 START JOB	12:43:46	2 PRESSURE TEST	12:45:10
3 PUMP SUPERFLUSH	12:53:15	3 PUMP H2O SPACER	12:48:40
4 PUMP TAIL CMT	14:16:43	6 PUMP LEAD CMT	13:05:33
5 PUMP DISPLACEMENT	14:28:18	9 DROP TOP PLUG	14:27:35
6 CHECK FLOATS	15:13:21	12 BUMP PLUG	15:08:33
7 PUMP PARASITE STRING	15:37:18	15 RELEASE PSI	15:31:20
8 SHUTDOWN			

Customer: OXY	Job Date: 08-Aug-2010	Sales Order #: 7545818
Well Description: CC 697-08-64B	Job Type: SURFACE	ADC Used: YES
Company Rep: SIMON BENEVIDES	Cement Supervisor: JAMES LEIST	Elite #: 9 JESSE SLAUGHTER

OXY TOP OUT 1



Local Event Log			
18	PUMP TOP OUT CMT	17:00:00	17:14:27
19	SHUTDOWN	17:14:27	20
20	END JOB	17:15:09	

Customer: OXY	Job Date: 08-Aug-2010	Sales Order #: 7545818
Well Description: CC 697-08-64B	Job Type: SURFACE	ADC Used: YES
Company Rep: SIMON BENEVIDES	Cement Supervisor: JAMES LEIST	Elite #: 9
		JESSE SLAUGHTER