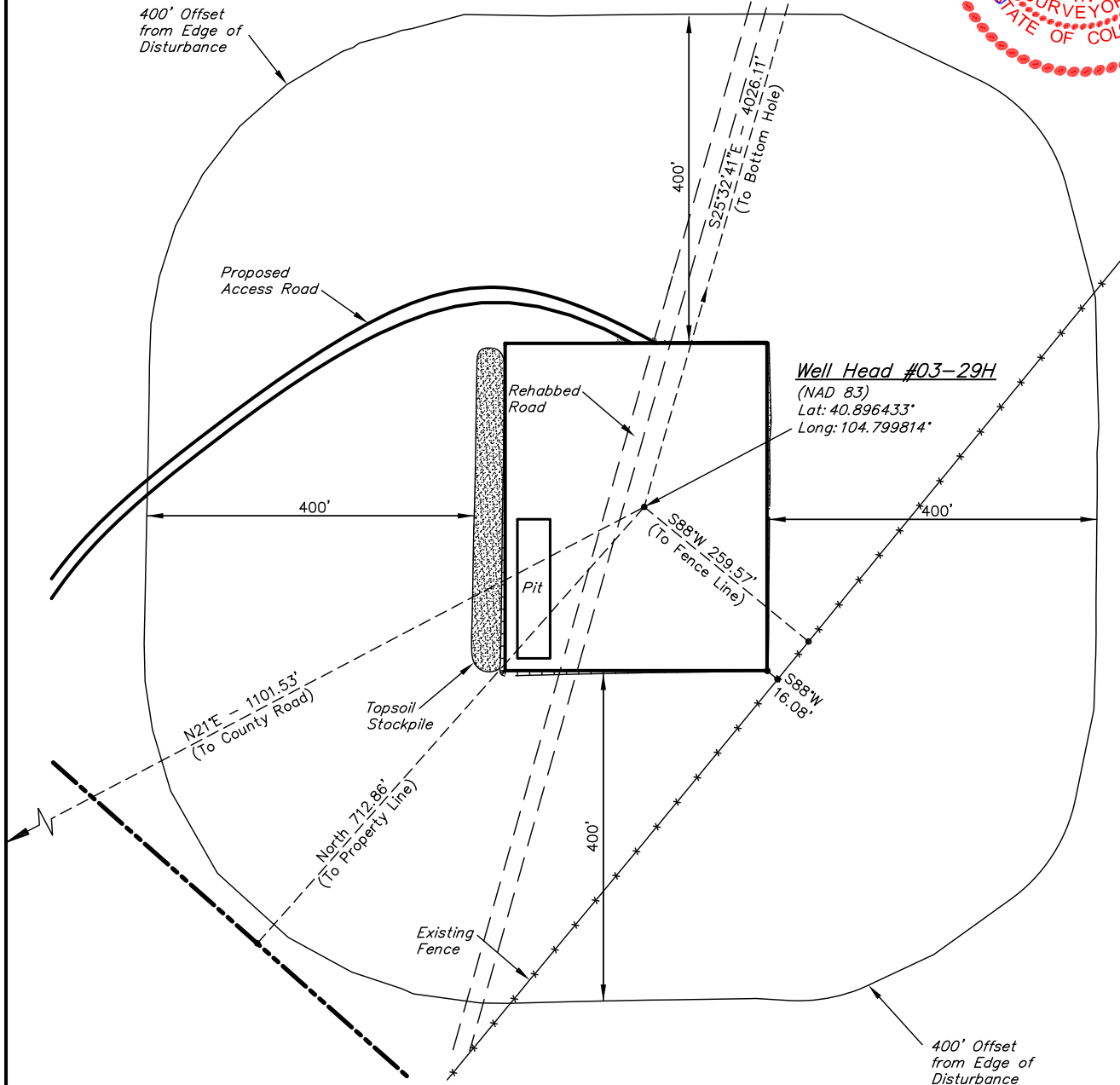


EOG RESOURCES, INC.  
ADDENDUM TO LEGAL PLAT FOR  
EASTMAN CREEK #03-29H  
SECTION 29, T11N, R66W, 6th P.M.  
1043' FNL 2350' FEL



SCALE: 1" = 200'  
DATE: 09-30-10  
DRAWN BY: M.D.



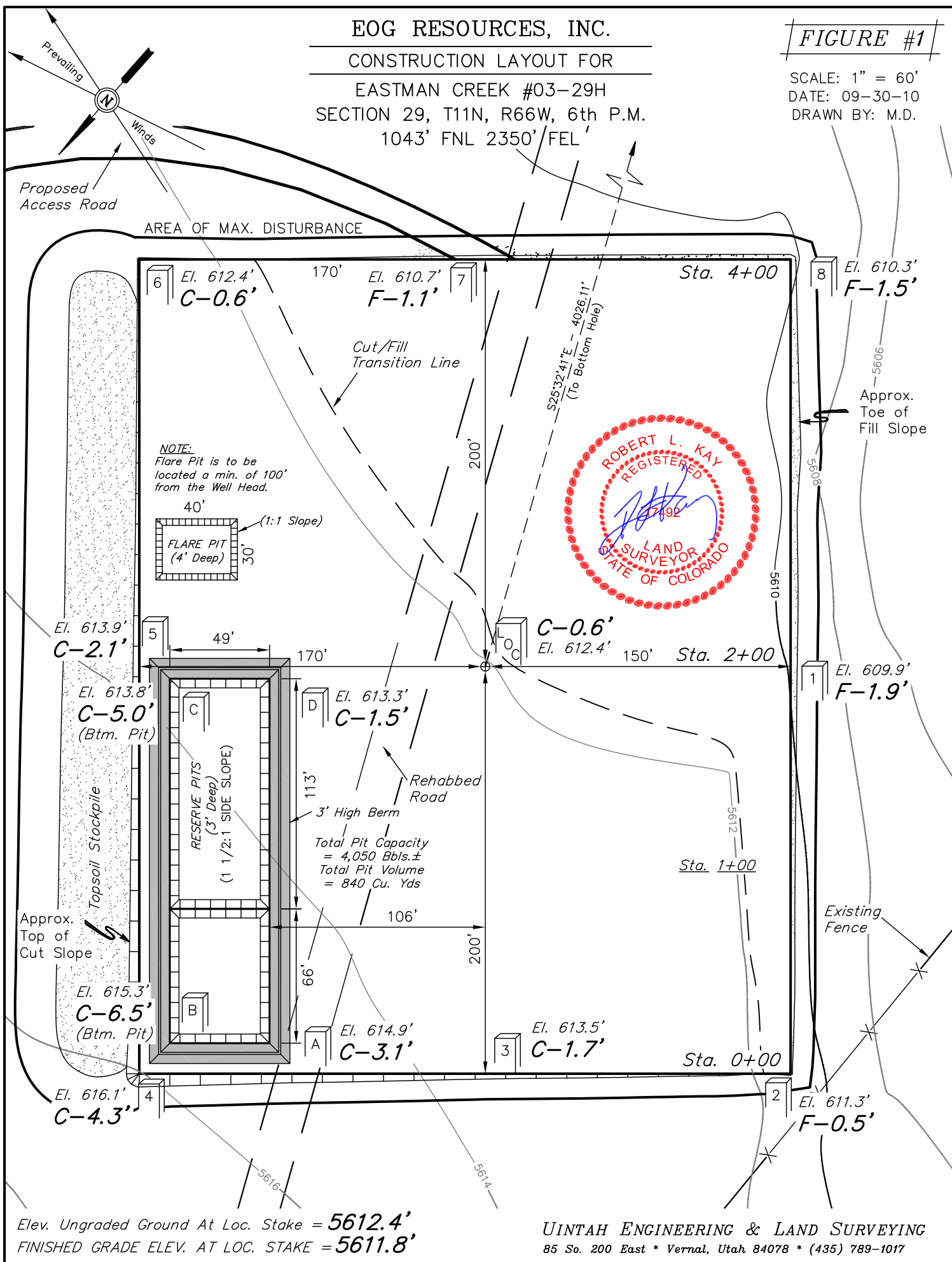
# EOG RESOURCES, INC.

## CONSTRUCTION LAYOUT FOR

EASTMAN CREEK #03-29H  
SECTION 29, T11N, R66W, 6th P.M.  
1043' FNL 2350' FEL

FIGURE #1

SCALE: 1" = 60'  
DATE: 09-30-10  
DRAWN BY: M.D.



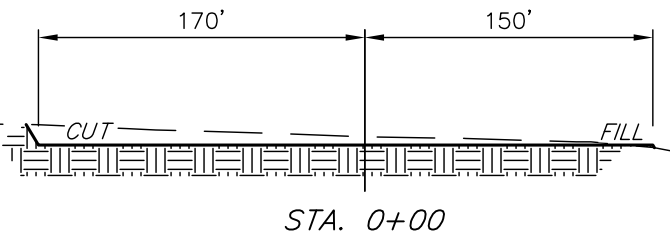
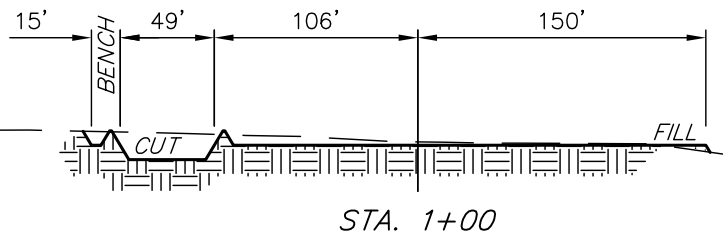
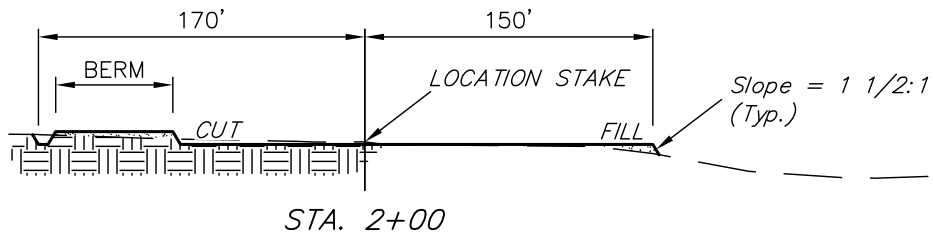
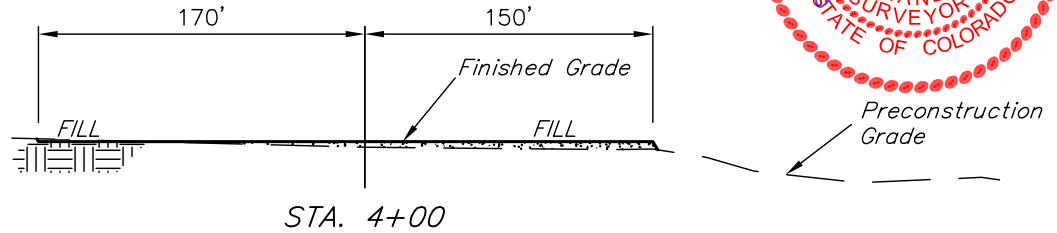
# EOG RESOURCES, INC.

## CONSTRUCTION LAYOUT CROSS SECTION FOR EASTMAN CREEK #03-29H SECTION 29, T11N, R66W, 6th P.M. 1043' FNL 2350' FEL

FIGURE #2

X-Section  
Scale  
1" = 40'  
1" = 100'

DATE: 09-30-10  
DRAWN BY: M.D.



### NOTE:

Topsoil should not be Stripped Below Finished Grade on Substructure Area.

APPROXIMATE ACREAGES  
WELL SITE DISTURBANCE = ± 3.804 ACRES  
ACCESS ROAD DISTURBANCE = ± 0.492 ACRES  
TOTAL = ± 4.296 ACRES

\* NOTE:  
FILL QUANTITY INCLUDES 5% FOR COMPACTION

### APPROXIMATE YARDAGES

(6") Topsoil Stripping = 2,480 Cu. Yds.  
Remaining Location = 2,950 Cu. Yds.  
TOTAL CUT = 5,430 CU.YDS.  
FILL = 2,530 CU.YDS.

EXCESS MATERIAL = 2,900 Cu. Yds.  
Topsoil & Pit Backfill = 2,900 Cu. Yds.  
(1/2 Pit Vol.)  
EXCESS UNBALANCE = 0 Cu. Yds.  
(After Interim Rehabilitation)

UINTAH ENGINEERING & LAND SURVEYING  
85 So. 200 East \* Vernal, Utah 84078 \* (435) 789-1017

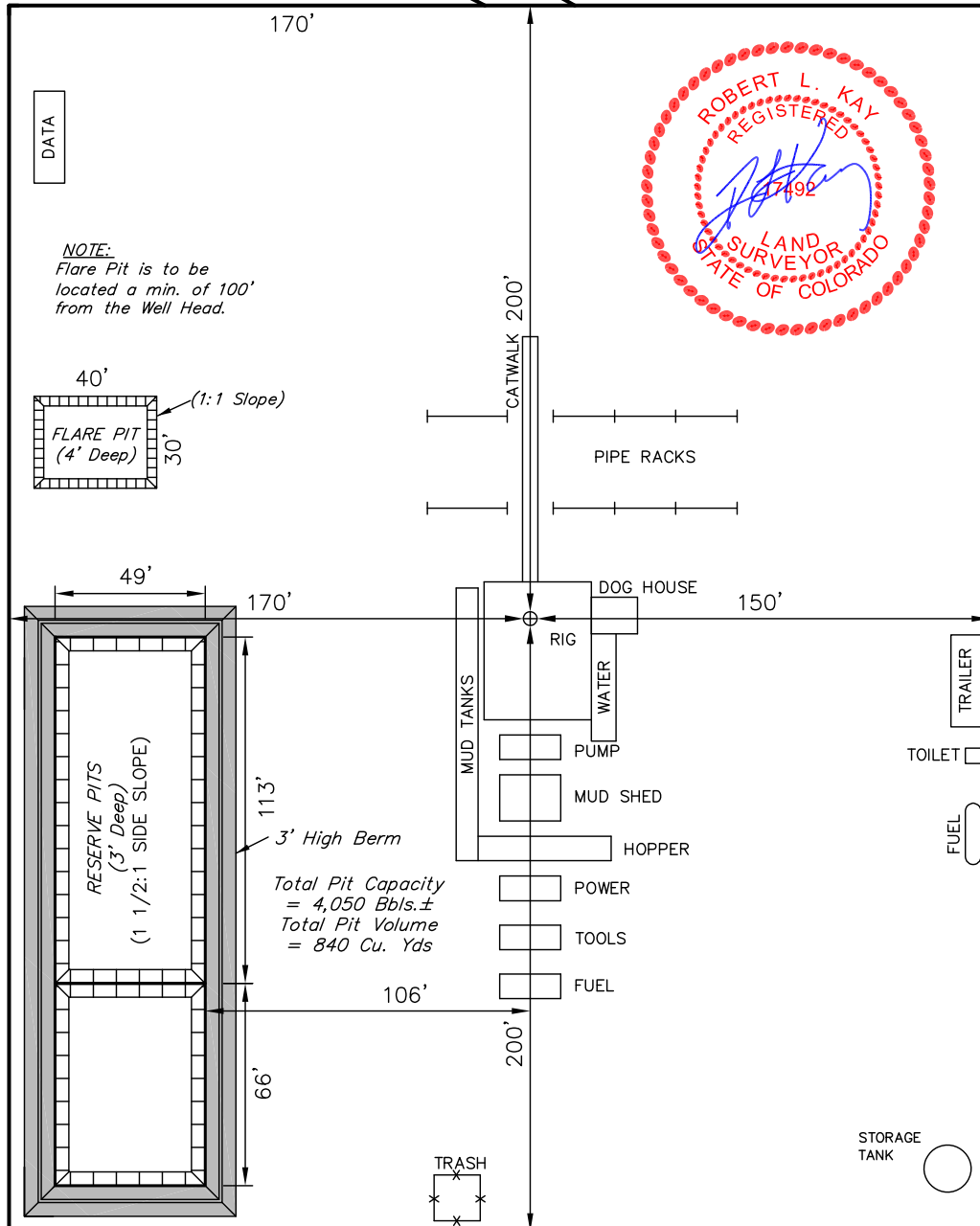
# EOG RESOURCES, INC.

TYPICAL RIG LAYOUT FOR  
EASTMAN CREEK #03-29H  
SECTION 29, T11N, R66W, 6th P.M.  
1043' FNL 2350' FEL

FIGURE #3

SCALE: 1" = 60'  
DATE: 09-30-10  
DRAWN BY: M.D.

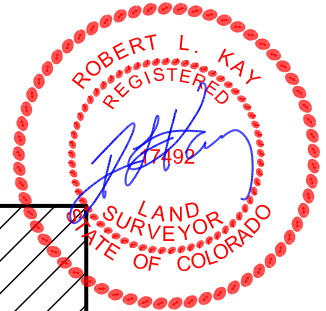
Proposed  
Access Road



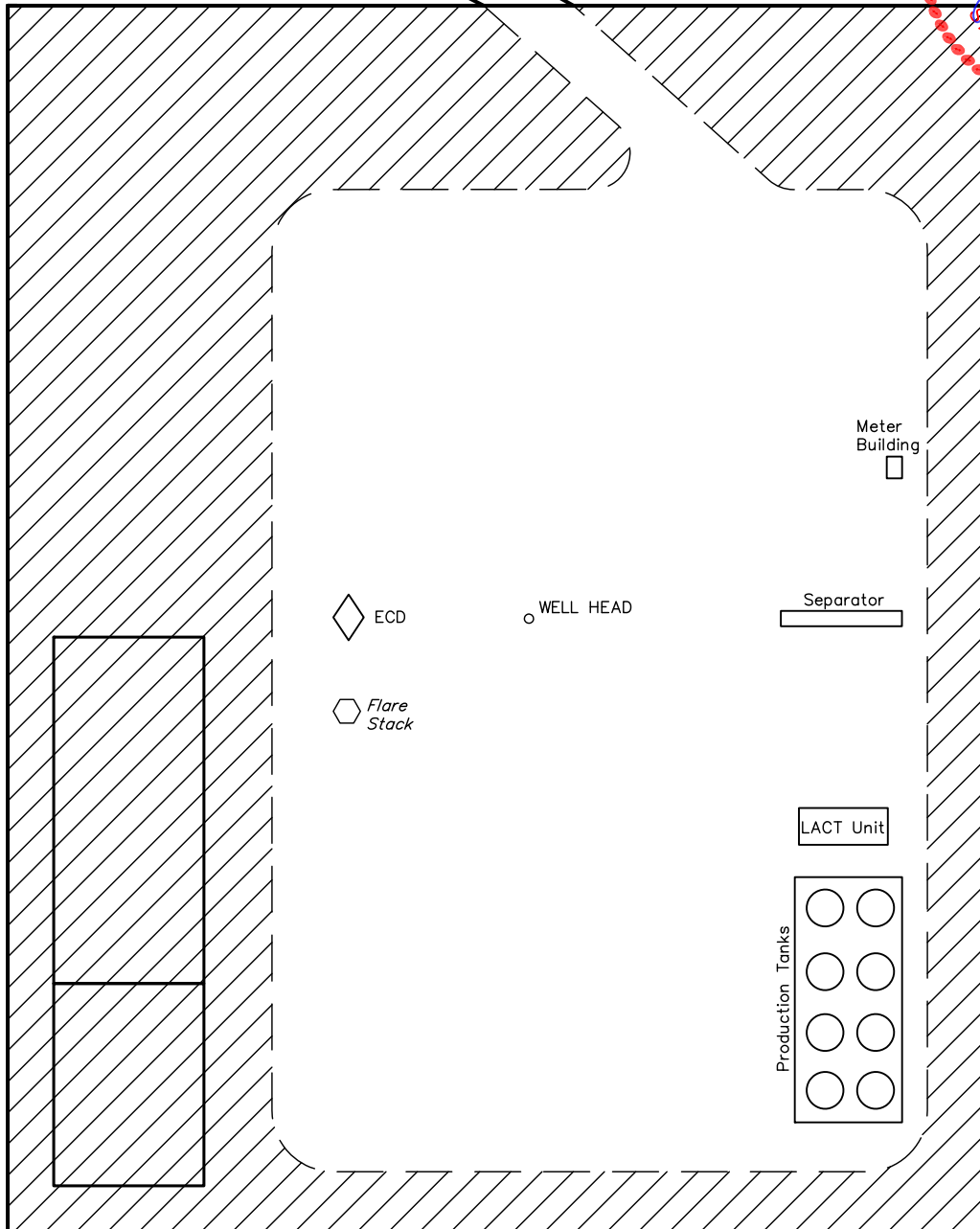
EOG RESOURCES, INC.  
RECLAMATION DIAGRAM FOR  
EASTMAN CREEK #03-29H  
SECTION 29, T11N, R66W, 6th P.M.  
1043' FNL 2350' FEL

FIGURE #4

SCALE: 1" = 60'  
DATE: 09-30-10  
DRAWN BY: M.D.



Access Road



APPROXIMATE ACREAGES  
UN-RECLAIMED =  $\pm 1.610$  ACRES



UINTAH ENGINEERING & LAND SURVEYING  
85 So. 200 East \* Vernal, Utah 84078 \* (435) 789-1017