



OXY GRAND JUNCTION EBUSINESS

**CC 697-08-62A
GRAND VALLEY
Garfield County , Colorado**

Cement Surface Casing
06-Aug-2010

Job Site Documents

The Road to Excellence Starts with Safety

Sold To #: 344034	Ship To #: 2799436	Quote #:	Sales Order #: 7545810
Customer: OXY GRAND JUNCTION EBUSINESS	Customer Rep: BENAVIDES, SIMON		
Well Name: CC	Well #: 697-08-62A	API/UWI #: 05-045-19286	
Field: GRAND VALLEY	City (SAP): Parachute	County/Parish: Garfield	State: Colorado
Lat: N 39.531 deg. OR N 39 deg. 31 min. 50.081 secs.	Long: W 108.233 deg. OR W -109 deg. 46 min. 0.455 secs.		
Contractor: H&P Drilling	Rig/Platform Name/Num: H&P 330		
Job Purpose: Cement Surface Casing			
Well Type: Development Well	Job Type: Cement Surface Casing		
Sales Person: DUNNING, DUSTIN	Srv Supervisor: HONE, AARON	MBU ID Emp #: 381285	

Job Personnel

HES Emp Name	Exp Hrs	Emp #	HES Emp Name	Exp Hrs	Emp #	HES Emp Name	Exp Hrs	Emp #
HOEFER, FREEMAN Dennis	13	369686	HONE, AARON D	13	381285	LEIST, JAMES R	10	362787
SALAZAR, PAUL Omar	10	445614	WEAVER, CARLTON Russell	13	457698	ZUMWALT, ORVILLE Raymond	13	398157

Equipment

HES Unit #	Distance-1 way	HES Unit #	Distance-1 way	HES Unit #	Distance-1 way	HES Unit #	Distance-1 way
10744648C	120 mile	10822535	120 mile	10856450	120 mile	10856464	120 mile
10867094	120 mile	10867322	120 mile	10897925	120 mile	10938665	120 mile
10938673	120 mile	10969711	120 mile	10988978	120 mile	10998508	120 mile
10998512	120 mile	11259886	120 mile				

Job Hours

Date	On Location Hours	Operating Hours	Date	On Location Hours	Operating Hours	Date	On Location Hours	Operating Hours
8/6/10	13	7						

TOTAL	Total is the sum of each column separately							
-------	--	--	--	--	--	--	--	--

Job

Formation Name	Formation Depth (MD)	Top	Bottom	Form Type	Job depth MD	Water Depth	Perforation Depth (MD)	From	To
				BHST	2730. ft				
					Job Depth TVD	2730. ft			
					Wk Ht Above Floor	3. ft			

Job Times

Date	Time	Time Zone
05 - Aug - 2010	21:00	MST
06 - Aug - 2010	02:00	MST
06 - Aug - 2010	06:47	MST
06 - Aug - 2010	11:42	MST
06 - Aug - 2010	15:00	MST

Well Data

Description	New / Used	Max pressure psig	Size in	ID in	Weight lbm/ft	Thread	Grade	Top MD ft	Bottom MD ft	Top TVD ft	Bottom TVD ft
-------------	---------------	-------------------------	------------	----------	------------------	--------	-------	--------------	--------------------	------------------	---------------------

Sales/Rental/3rd Party (HES)

Description	Qty	Qty uom	Depth	Supplier
PLUG,CMTG,TOP,9 5/8,HWE,8.16 MIN/9.06 MA	1	EA		
R/A DENSOMETER W/CHART RECORDER,/JOB,ZI	1	JOB		
PORT. DATA ACQUIS. W/OPTICEM RT W/HES	1	EA		
ADC (AUTO DENSITY CTRL) SYS, /JOB,ZI	1	JOB		

Tools and Accessories

Type	Size	Qty	Make	Depth	Type	Size	Qty	Make	Type	Size	Qty	Make
Guide Shoe					Packer				Top Plug	9 5/8	1	
Float Shoe					Bridge Plug				Bottom Plug			
Float Collar					Retainer				SSR plug set			
Insert Float									Plug Container	9 5/8	1	
Stage Tool									Centralizers			

Miscellaneous Materials

Gelling Agt	Conc	Surfactant	Conc	Acid Type	Qty	Conc	%
Treatment Fld	Conc	Inhibitor	Conc	Sand Type	Size	Qty	

Fluid Data									
Stage/Plug #: 1									
Fluid #	Stage Type	Fluid Name	Qty	Qty uom	Mixing Density lbm/gal	Yield ft ³ /sk	Mix Fluid Gal/sk	Rate bbl/min	Total Mix Fluid Gal/sk
1	Water Spacer		20.00	bbl	8.33	.0	.0	.0	
2	Super Flush 101	SUPER FLUSH 101 - SBM (12199)	20.00	bbl	10.	.0	.0	.0	
3	Water Spacer		20.00	bbl	.	.0	.0	.0	
4	Lead Cement	VERSACEM (TM) SYSTEM (452010)	1030.0	sacks	12.3	2.33	12.62		12.62
	12.62 Gal	FRESH WATER							
5	Tail Cement	VERSACEM (TM) SYSTEM (452010)	160.0	sacks	12.8	2.07	10.67		10.67
	10.67 Gal	FRESH WATER							
6	Displacement		205.5	bbl	.	.0	.0	.0	
7	Topout Cement	HALCEM (TM) SYSTEM (452986)	76.0	sacks	12.5	1.97	10.96		
	7.67 Gal	FRESH WATER							
Calculated Values		Pressures		Volumes					
Displacement	205.5	Shut In: Instant		Lost Returns	YES	Cement Slurry		Pad	
Top Of Cement	SURFACE	5 Min		Cement Returns	3	Actual Displacement		Treatment	
Frac Gradient		15 Min		Spacers	60	Load and Breakdown		Total Job	
Rates									
Circulating	6	Mixing	5	Displacement	8	Avg. Job	6		
Cement Left In Pipe	Amount	53 ft	Reason	Shoe Joint					
Frac Ring # 1 @	ID	Frac ring # 2 @	ID	Frac Ring # 3 @	ID	Frac Ring # 4 @	ID		
The Information Stated Herein Is Correct				Customer Representative Signature					

The Road to Excellence Starts with Safety

Sold To #: 344034	Ship To #: 2799436	Quote #:	Sales Order #: 7545810
Customer: OXY GRAND JUNCTION EBUSINESS	Customer Rep: BENAVIDES, SIMON		
Well Name: CC	Well #: 697-08-62A	API/UWI #: 05-045-19286	
Field: GRAND VALLEY	City (SAP): Parachute	County/Parish: Garfield	State: Colorado
Legal Description:			
Lat: N 39.531 deg. OR N 39 deg. 31 min. 50.081 secs.		Long: W 108.233 deg. OR W -109 deg. 46 min. 0.455 secs.	
Contractor: H&P Drilling	Rig/Platform Name/Num: H&P 330		
Job Purpose: Cement Surface Casing	Ticket Amount:		
Well Type: Development Well	Job Type: Cement Surface Casing		
Sales Person: DUNNING, DUSTIN	Srv Supervisor: HONE, AARON	MBU ID Emp #: 381285	

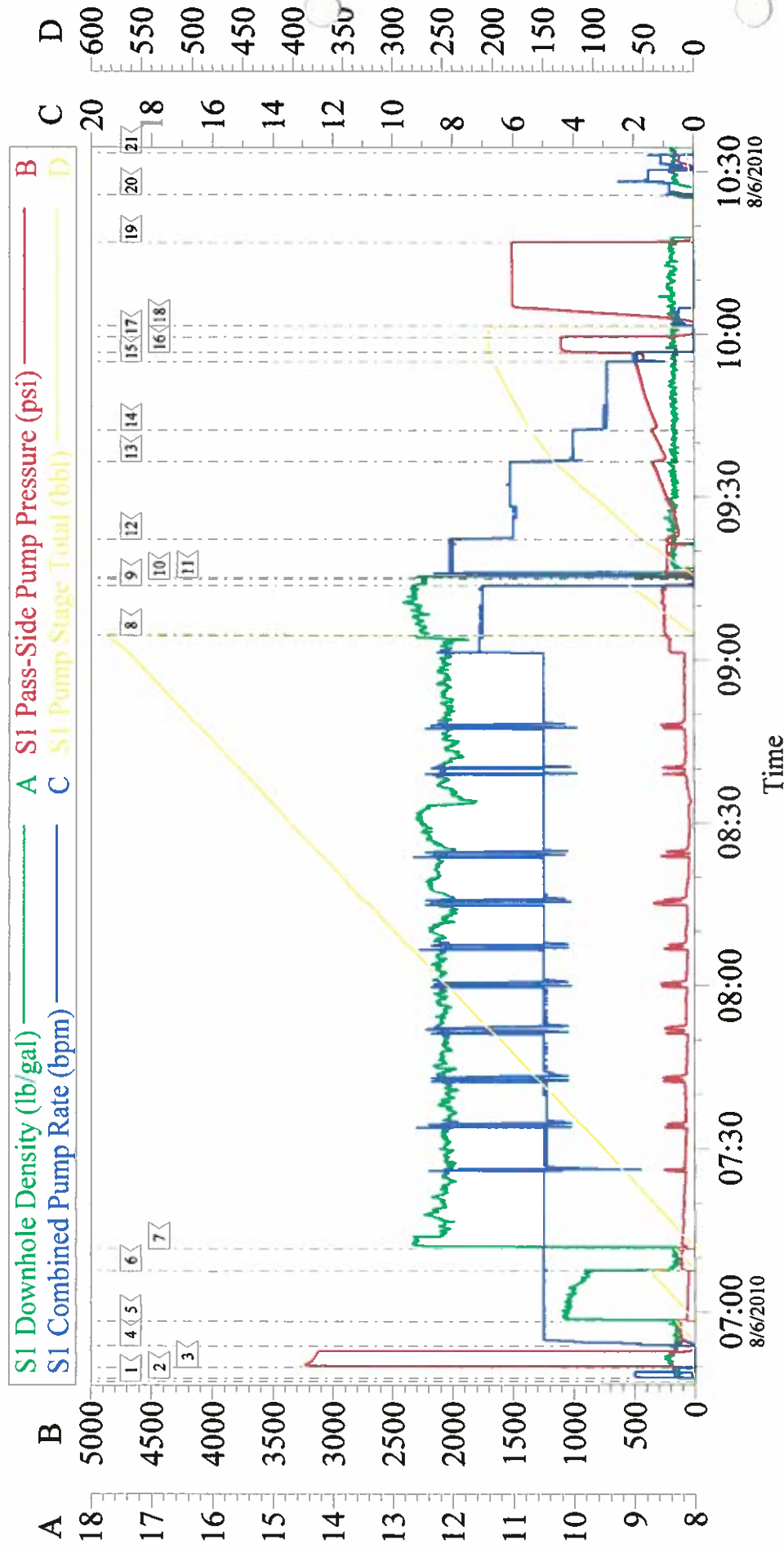
Activity Description	Date/Time	Cht #	Rate bbl/ min	Volume bbl		Pressure psig		Comments
				Stage	Total	Tubing	Casing	
Call Out	08/05/2010 21:00							
Pre-Convoy Safety Meeting	08/05/2010 23:50							ALL HES PRESENT
Crew Leave Yard	08/06/2010 00:00							
Arrive At Loc	08/06/2010 02:00							RIG RUNNING CASING. SF TRUCK ON LOCATION.
Assessment Of Location Safety Meeting	08/06/2010 02:10							ALL HES PRESENT
Pre-Rig Up Safety Meeting	08/06/2010 02:20							ALL HES PRESENT
Rig-Up Equipment	08/06/2010 02:30							
Pre-Job Safety Meeting	08/06/2010 06:20							PLUG CONTAINER INSPECTED, STAR ZIP TIED.
Start Job	08/06/2010 06:47							HOLE- 14 3/4" TD- 2730' CASING- 9 5/8" 36# J-55 TP- 2711' SJ- 53' PARASITE STRING- 1.9" N-80 TD-2518' MUD- 9.5#
Test Lines	08/06/2010 06:49							3225 PSI.
Pump Spacer	08/06/2010 06:53		5	20			100.0	FRESH WATER
Pump Spacer	08/06/2010 06:58		5	20			65.0	SUPERFLUSH 101
Pump Spacer	08/06/2010 07:07		5	20			103.0	FRESH WATER

Activity Description	Date/Time	Cht #	Rate bbl/ min	Volume bbl		Pressure psig		Comments
				Stage	Total	Tubing	Casing	
Pump Lead Cement	08/06/2010 07:11		5	427.4			204.0	VERSACEM-1030 SKS, 12.3PPG, 2.33 FT3/SK, 12.62 GAL/SK 7 BOXES TUFF FIBER.
Pump Tail Cement	08/06/2010 09:04		5	59			256.0	VERSACEM- 160 SKS, 12.8 PPG, 2.07 FT3/SK, 10.67 GAL/SK
Shutdown	08/06/2010 09:13							
Drop Top Plug	08/06/2010 09:14							PLUG AWAY.
Pump Displacement	08/06/2010 09:15		8	53			230.0	FRESH WATER
Slow Rate	08/06/2010 09:22		6	53			230.0	DROPPED TO 150 PSI.
Slow Rate	08/06/2010 09:36		4	142			342.0	DROPPED TO 240 PSI.
Slow Rate	08/06/2010 09:42		3	164			350.0	DROPPED TO 314 PSI.
Slow Rate	08/06/2010 09:54		2	400			489.0	DROPPED TO 420 PSI.
Bump Plug	08/06/2010 09:56		2	205.5			460.0	PUMPED TO 1090 PSI. PLUG LANDED. SF TRUCK HOURS- 8
Check Floats	08/06/2010 09:59							FLOATS HELD. 1.5 BBLs. BACK
Pressure Test	08/06/2010 10:01		0.5	1.6			1500. 0	TEST CASING
Release Casing Pressure	08/06/2010 10:16							GOOD CASING TEST
Other	08/06/2010 10:25		2	8.5		400.0		PUMPED SUGAR WATER DOWN PARASITE STRING
Shutdown	08/06/2010 10:33							NO CEMENT TO SURFACE.
Start Job	08/06/2010 11:26							TOP OUT.
Pump Cement	08/06/2010 11:26		2.5	18.3		14.0		76 SKS, 12.5 PPG, 1.97 FT3/SK, 10.96 GAL/SK
Shutdown	08/06/2010 11:38							3 BBLs. CEMENT TO SURFACE. PUMPED 8.3 BBLs TO PIT. TOTAL CEMENT MIXED 26.6 BBLs.

Activity Description	Date/Time	Cht #	Rate bbl/ min	Volume bbl		Pressure psig		Comments
				Stage	Total	Tubing	Casing	
End Job	08/06/2010 11:42							
Post-Job Safety Meeting (Pre Rig-Down)	08/06/2010 12:50							
Rig-Down Equipment	08/06/2010 13:00							WAITED TO SEE IF CEMENT DROPPED.
Pre-Convoy Safety Meeting	08/06/2010 14:10							
Crew Leave Location	08/06/2010 15:00							THANK YOU FOR USING HALLIBURTON.

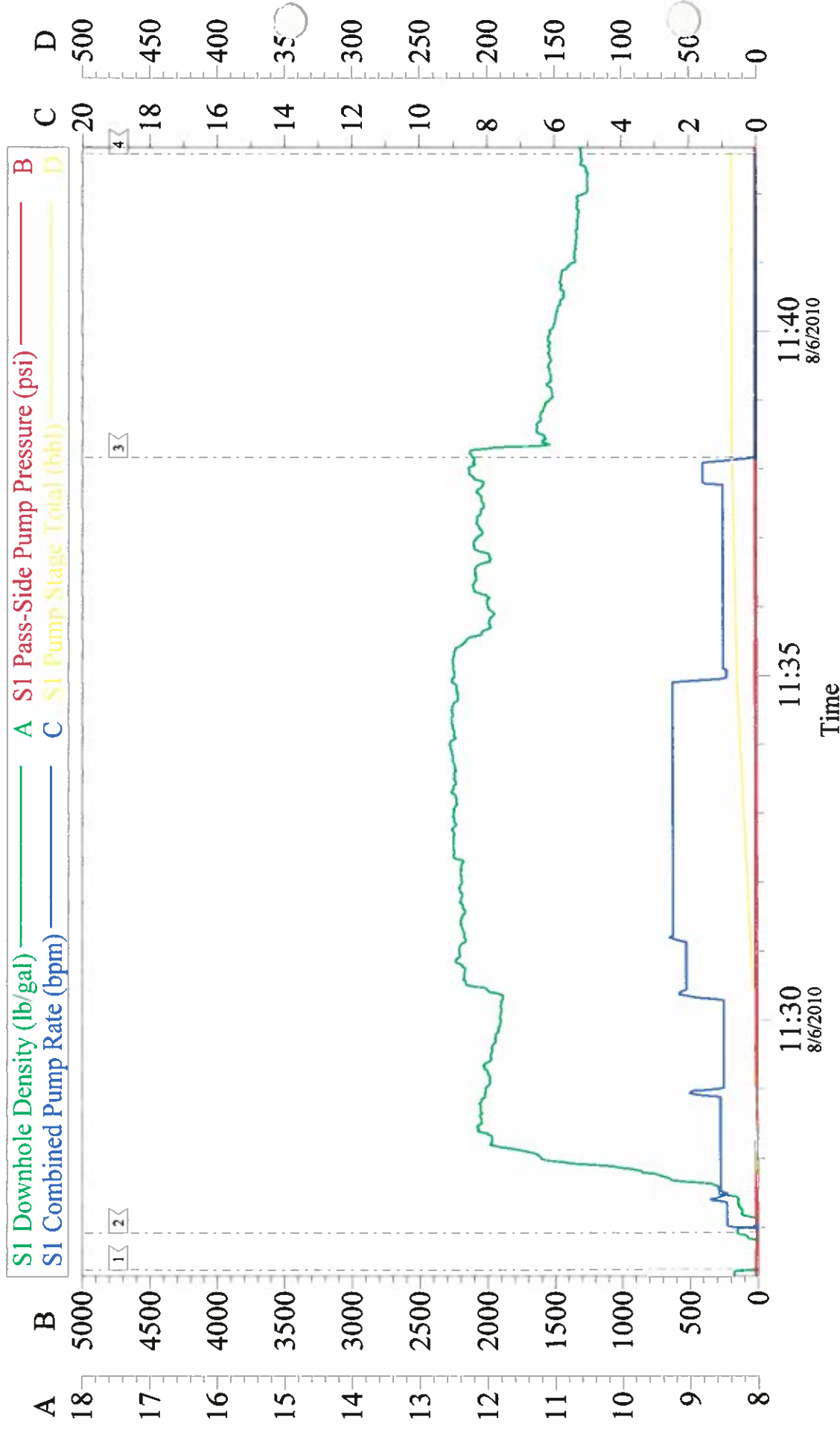
OXY

9 5/8" SURFACE



Customer:	OXY	Job Date:	06-Aug-2010	Sales Order #:	7545810
Well Description:	CC 697-08-62A	Job Type:	SURFACE	ADC Used:	YES
Company Rep:	GEORGE LYERLY	Cement Supervisor:	AARON HONE	Elite # / Operator:	6/ RUSTY WEAVER

OXY TOP OUT 1



Customer: OXY	Job Date: 06-Aug-2010	Sales Order #: 7545810
Well Description: CC 697-08-62A	Job Type: TOP OUT	ADC Used: YES
Company Rep: GEORGE LYERLY	Cement Supervisor: AARON HONE	Elite # / Operator: 6/ RUSTY WEAVER