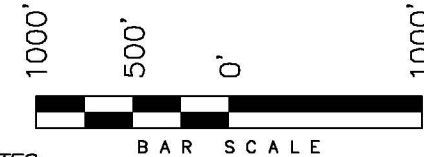


T7S, R93W, 6th P.M.

ENCANA OIL & GAS (USA) INC

WELL LOCATION, HMU FEDERAL 16-10A (J16W)
(J16W), LOCATED AS SHOWN IN THE NW
1/4 SE 1/4 OF SECTION 16, T7S, R93W,
6th P.M. GARFIELD COUNTY, COLORADO.



NOTES:

1. Well footages are measured at right angles to the Section Lines.
2. Bearings are based on Global Positioning Satellite observations.
3. G.P.S. Operator: C.D. Slauch, (PDOP) = 1.9

IMPROVEMENT NOTE:

See addendum to legal plat (sheet 2o)
for visible improvements within 400' of
the proposed location.

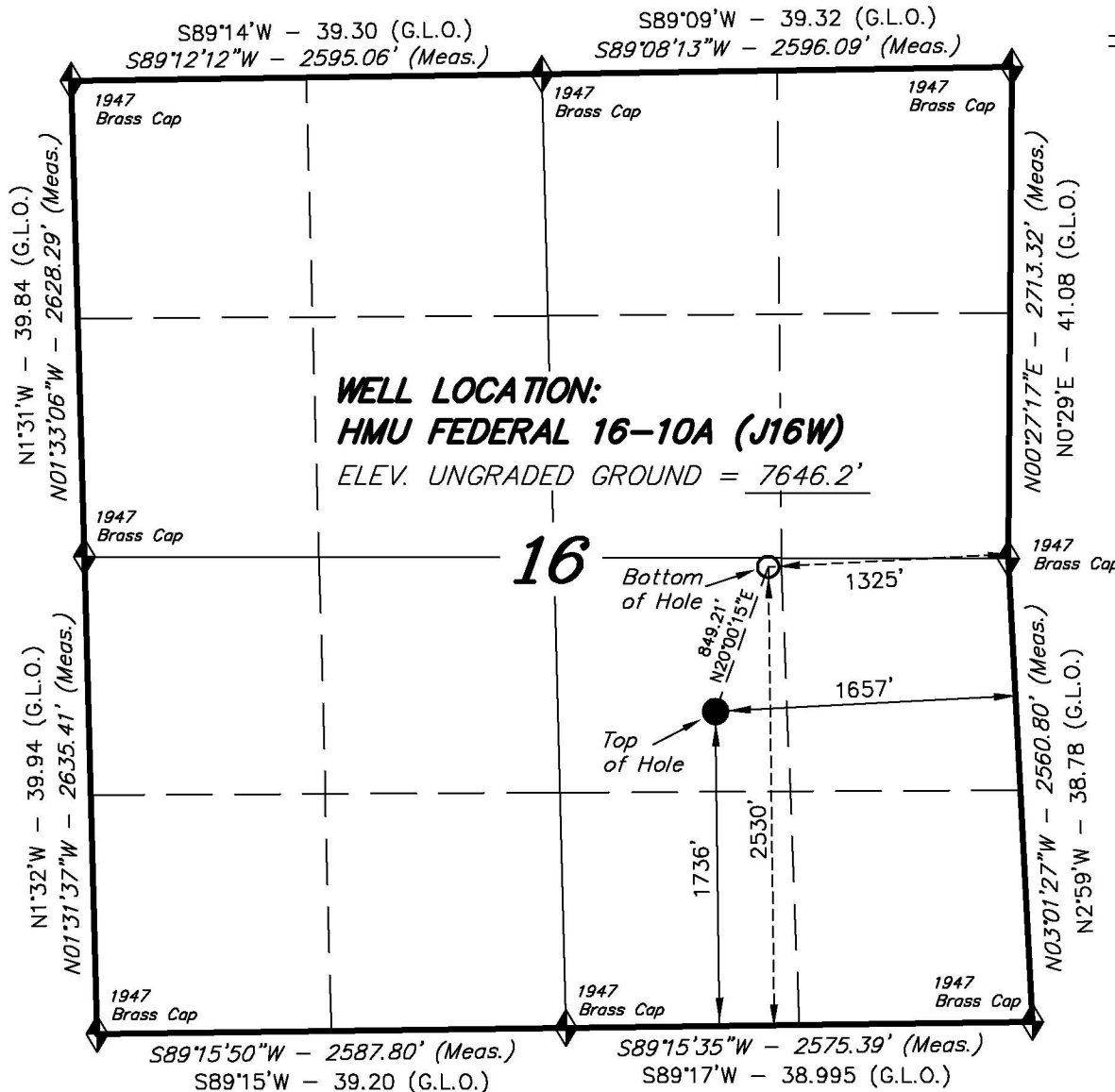
THIS IS TO CERTIFY THAT THE ABOVE PLAT WAS
PREPARED FROM FIELD NOTES OF ACTUAL SURVEYS
MADE BY ME OR UNDER MY SUPERVISION. THE LOCATION
HAS BEEN STAKED ON THE GROUND AS SHOWN ON THE
PLAT, AND THAT THE SAME ARE TRUE AND CORRECT
TO THE BEST OF MY KNOWLEDGE AND BELIEF.

[Signature] # 30125
REGISTERED LAND SURVEYOR
REGISTRATION No. 30125
STATE OF COLORADO

TRI STATE LAND SURVEYING & CONSULTING

180 NORTH VERNAL AVE. - VERNAL, UTAH 84078
(435) 781-2501

DATE SURVEYED: 06-02-10	SURVEYED BY: C.D.S.	SHEET 2b OF 11
DATE DRAWN: 06-22-10	DRAWN BY: F.T.M.	
REVISED: L.C.S. 10-13-10	SCALE: 1" = 1000'	



NAD 83 (SURFACE LOCATION)

LATITUDE = 39°26'35.57"
(39.443214)
LONGITUDE = 107°46'32.32"
(107.775645)

◆ = SECTION CORNERS LOCATED

Basis of elevation is the Rifle 2 Triangulation
Station. 39°31'53.80" N Lat. & 107°47'07.78" W
Long. (NAD 83). Elevation = 5323.1' (NAVD88).