

T11N, R65W, 6th. P.M.

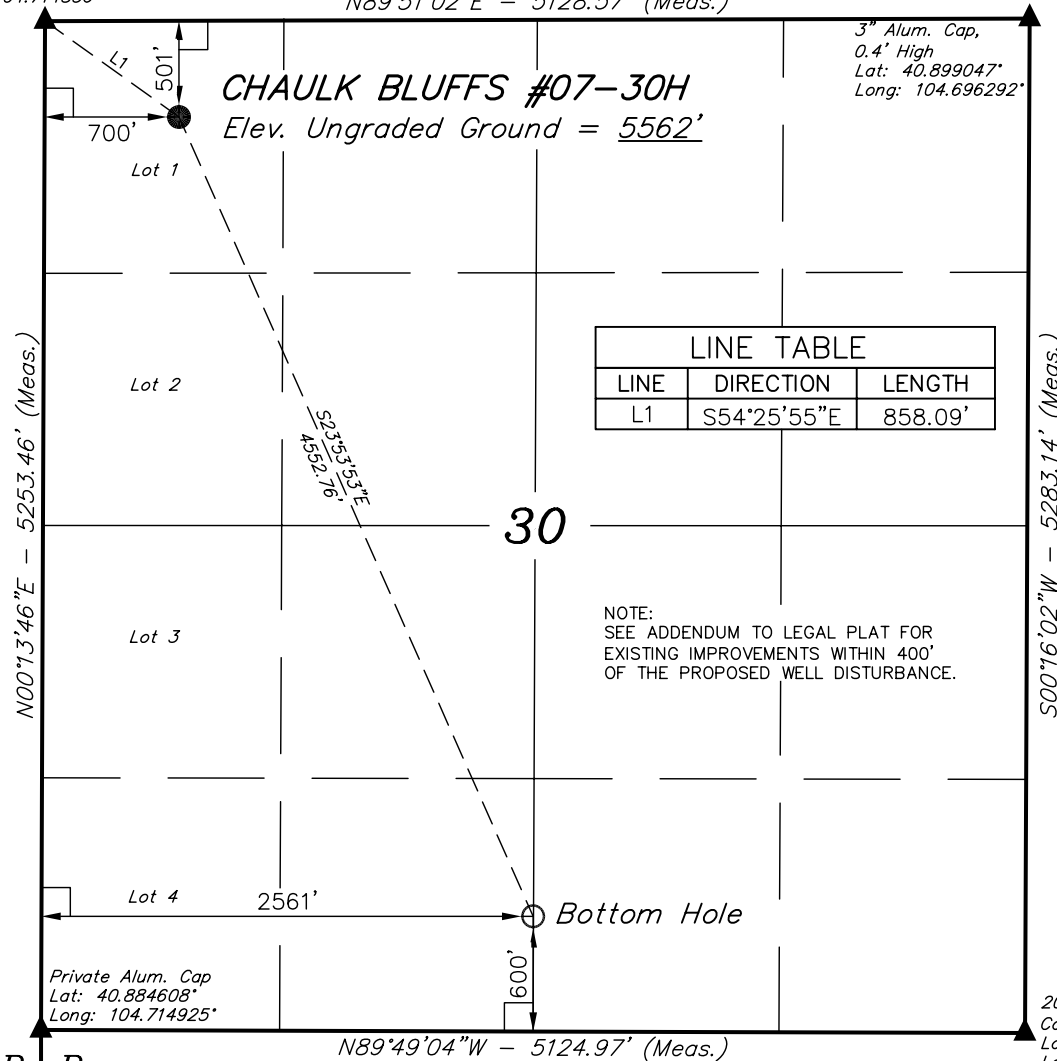
EOG RESOURCES, INC.

Alum. Cap
Lat: 40.899022°
Long: 104.714836°

N89°51'02"E - 5128.57' (Meas.)

3" Alum. Cap,
0.4' High
Lat: 40.899047°
Long: 104.696292°

CHAULK BLUFFS #07-30H
Elev. Ungraded Ground = 5562'



LINE TABLE		
LINE	DIRECTION	LENGTH
L1	S54°25'55"E	858.09'

NOTE:
SEE ADDENDUM TO LEGAL PLAT FOR
EXISTING IMPROVEMENTS WITHIN 400'
OF THE PROPOSED WELL DISTURBANCE.

S00°16'02"W - 5283.14' (Meas.)

N89°49'04"W - 5124.97' (Meas.)

2010 3" Alum.
Cap, 0.4' High
Lat: 40.884553°
Long: 104.696397°

PDOP = 1.9

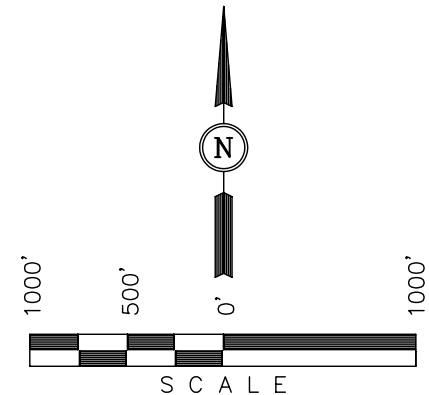
Well location, CHAULK BLUFFS #07-30H, located as shown in Lot 1 of Section 30, T11N, R65W, 6th. P.M., Weld County, Colorado.

BASIS OF ELEVATION

SPOT ELEVATION LOCATED NEAR THE NORTHEAST CORNER OF SECTION 28, T10N, R66W, 6th. P.M. TAKEN FROM THE DOVER, QUADRANGLE, COLORADO, WELD COUNTY, 7.5 MINUTE QUAD (TOPOGRAPHIC MAP) PUBLISHED BY THE UNITED STATES DEPARTMENT OF THE INTERIOR, GEOLOGICAL SURVEY. SAID ELEVATION IS MARKED AS BEING 5374 FEET.

BASIS OF BEARINGS

BASIS OF BEARINGS IS A G.P.S. OBSERVATION.



CERTIFICATE

THIS IS TO CERTIFY THAT THE ABOVE PLAT WAS PREPARED FROM FIELD NOTES OF ACTUAL SURVEYS MADE BY ME OR UNDER MY SUPERVISION AND THAT THE SAME ARE TRUE AND CORRECT TO THE BEST OF MY KNOWLEDGE AND BELIEF.

REGISTERED LAND SURVEYOR
REGISTRATION NO. 17492
STATE OF COLORADO

R R
66 65
W W

LEGEND:

- └─┘ = 90° SYMBOL
- = PROPOSED WELL HEAD.
- ▲ = SECTION CORNERS LOCATED.

NAD 83 (TARGET BOTTOM HOLE)	NAD 83 (SURFACE LOCATION)
LATITUDE = 40°53'10.42" (40.886228)	LATITUDE = 40°53'51.55" (40.897653)
LONGITUDE = 104°42'20.36" (104.705656)	LONGITUDE = 104°42'44.33" (104.712314)
NAD 27 (TARGET BOTTOM HOLE)	NAD 27 (SURFACE LOCATION)
LATITUDE = 40°53'10.49" (40.886247)	LATITUDE = 40°53'51.62" (40.897672)
LONGITUDE = 104°42'18.48" (104.705133)	LONGITUDE = 104°42'42.45" (104.711792)
STATE PLANE NAD 83 COLORADO NORTH	STATE PLANE NAD 83 COLORADO NORTH
N: 1566687.00 E: 3219643.38	N: 1570833.10 E: 3217765.36
STATE PLANE NAD 27 COLORADO NORTH	STATE PLANE NAD 27 COLORADO NORTH
N: 566685.11 E: 2219793.53	N: 570831.11 E: 2217915.51

UINTAH ENGINEERING & LAND SURVEYING
85 SOUTH 200 EAST - VERNAL, UTAH 84078
(435) 789-1017

SCALE 1" = 1000'	DATE SURVEYED: 10-07-10	DATE DRAWN: 11-1-10
PARTY R.P. M.S. J.I.	REFERENCES G.L.O. PLAT	
WEATHER WARM	FILE EOG RESOURCES, INC.	