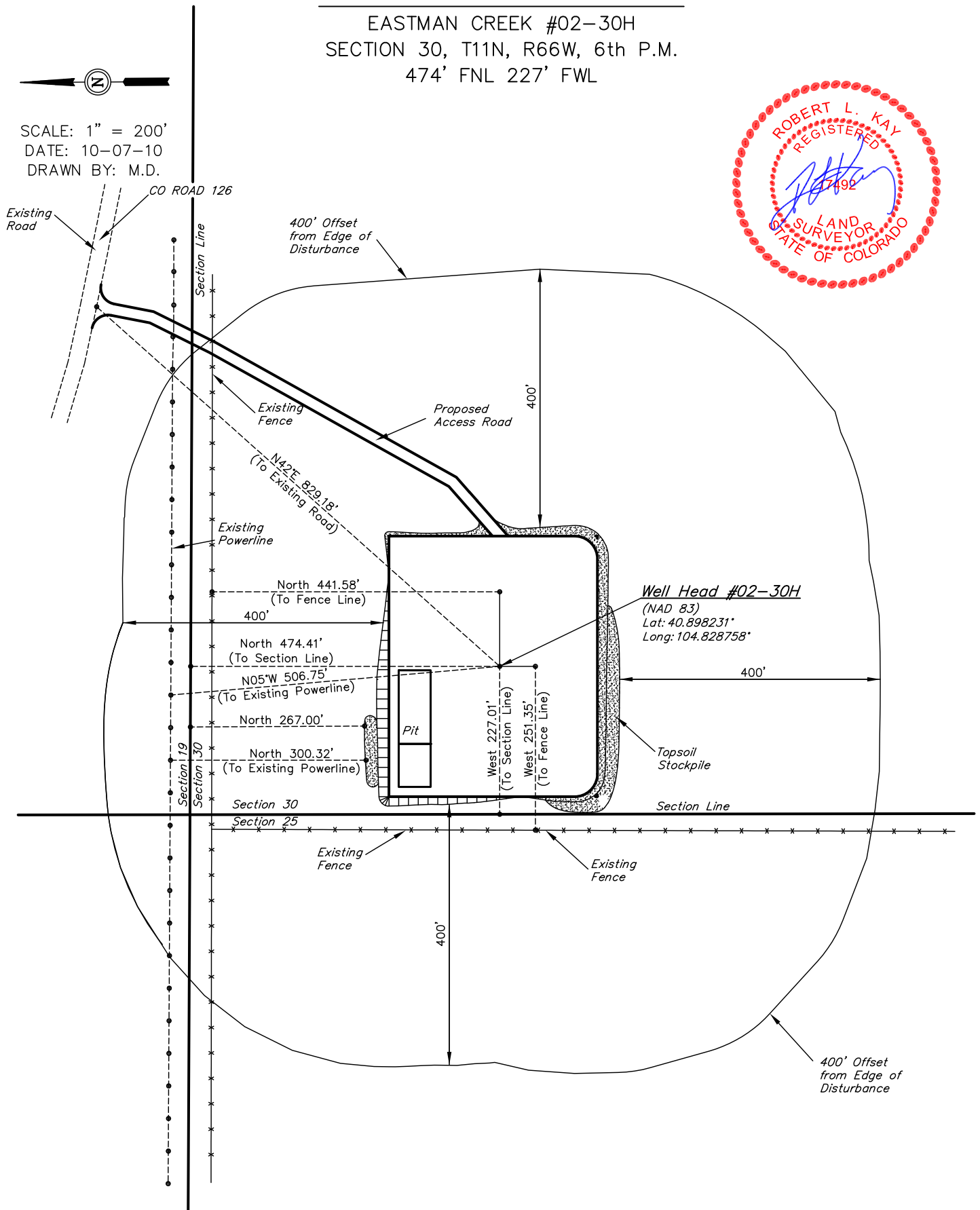


EOG RESOURCES, INC.
ADDENDUM TO LEGAL PLAT FOR
EASTMAN CREEK #02-30H
SECTION 30, T11N, R66W, 6th P.M.
474' FNL 227' FWL

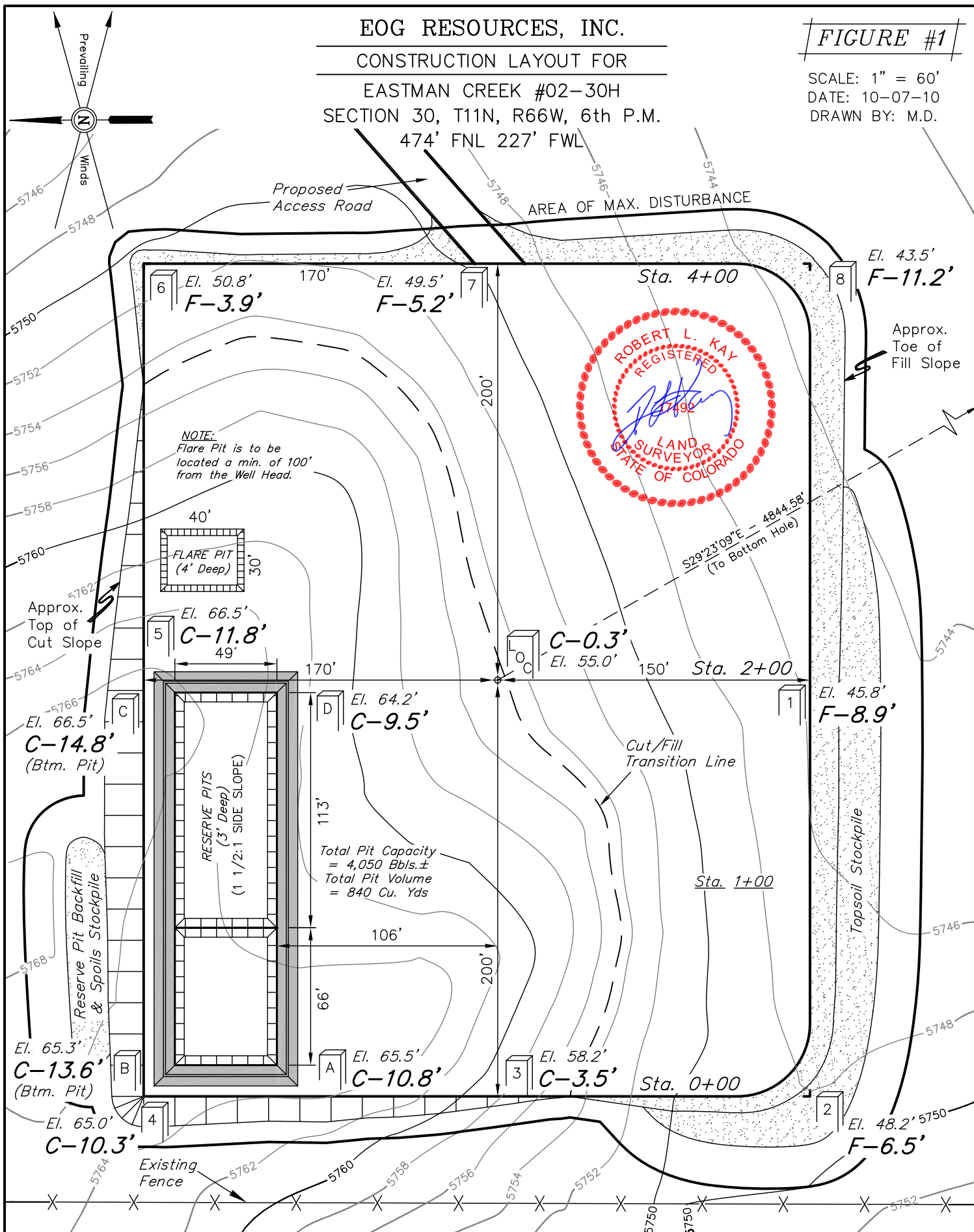
SCALE: 1" = 200'
DATE: 10-07-10
DRAWN BY: M.D.



EOG RESOURCES, INC.
CONSTRUCTION LAYOUT FOR
EASTMAN CREEK #02-30H
SECTION 30, T11N, R66W, 6th P.M.
474' FNL 227' FWL

FIGURE #1

SCALE: 1" = 60'
DATE: 10-07-10
DRAWN BY: M.D.



Elev. Ungraded Ground At Loc. Stake = 5755.0'
FINISHED GRADE ELEV. AT LOC. STAKE = 5754.7'

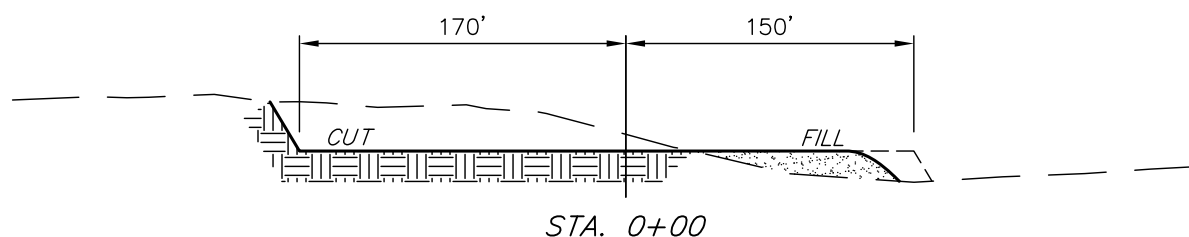
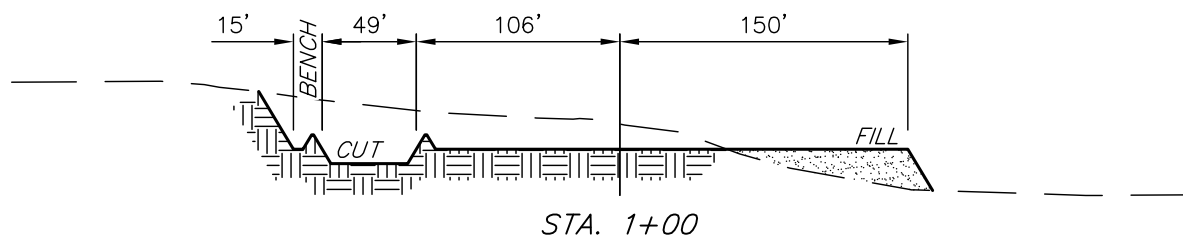
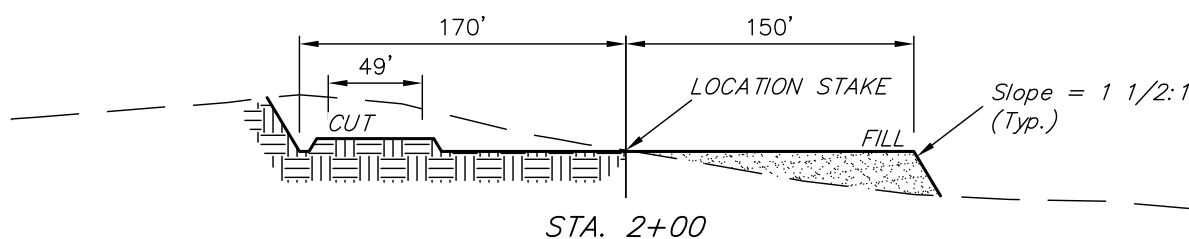
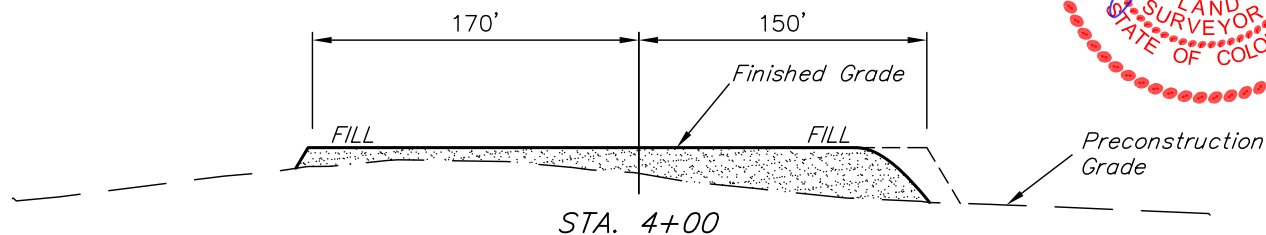
UINTAH ENGINEERING & LAND SURVEYING
85 So. 200 East * Vernal, Utah 84078 * (435) 789-1017

1" = 40'
X-Section
Scale
1" = 100'

DATE: 10-07-10
DRAWN BY: M.D.

EOG RESOURCES, INC.
CONSTRUCTION LAYOUT CROSS SECTION FOR
EASTMAN CREEK #02-30H
SECTION 30, T11N, R66W, 6th P.M.
474' FNL 227' FWL

FIGURE #2



NOTE:

Topsoil should not be Stripped Below Finished Grade on Substructure Area.

APPROXIMATE ACREAGES
WELL SITE DISTURBANCE = ± 4.020 ACRES
ACCESS ROAD DISTURBANCE = ± 0.498 ACRES
TOTAL = ± 4.518 ACRES

* NOTE:
FILL QUANTITY INCLUDES 5% FOR COMPACTION

APPROXIMATE YARDAGES

(6") Topsoil Stripping = 2,760 Cu. Yds.
Remaining Location = 15,700 Cu. Yds.
TOTAL CUT = 18,460 CU.YDS.
FILL = 15,280 CU.YDS.

EXCESS MATERIAL = 3,180 Cu. Yds.
Topsoil & Pit Backfill = 3,180 Cu. Yds.
(1/2 Pit Vol.)
EXCESS UNBALANCE = 0 Cu. Yds.
(After Interim Rehabilitation)

UINTAH ENGINEERING & LAND SURVEYING
85 So. 200 East * Vernal, Utah 84078 * (435) 789-1017

EOG RESOURCES, INC.

TYPICAL RIG LAYOUT FOR
EASTMAN CREEK #02-30H
SECTION 30, T11N, R66W, 6th P.M.
474' FNL 227' FWL

FIGURE #3

SCALE: 1" = 60'
DATE: 10-07-10
DRAWN BY: M.D.

