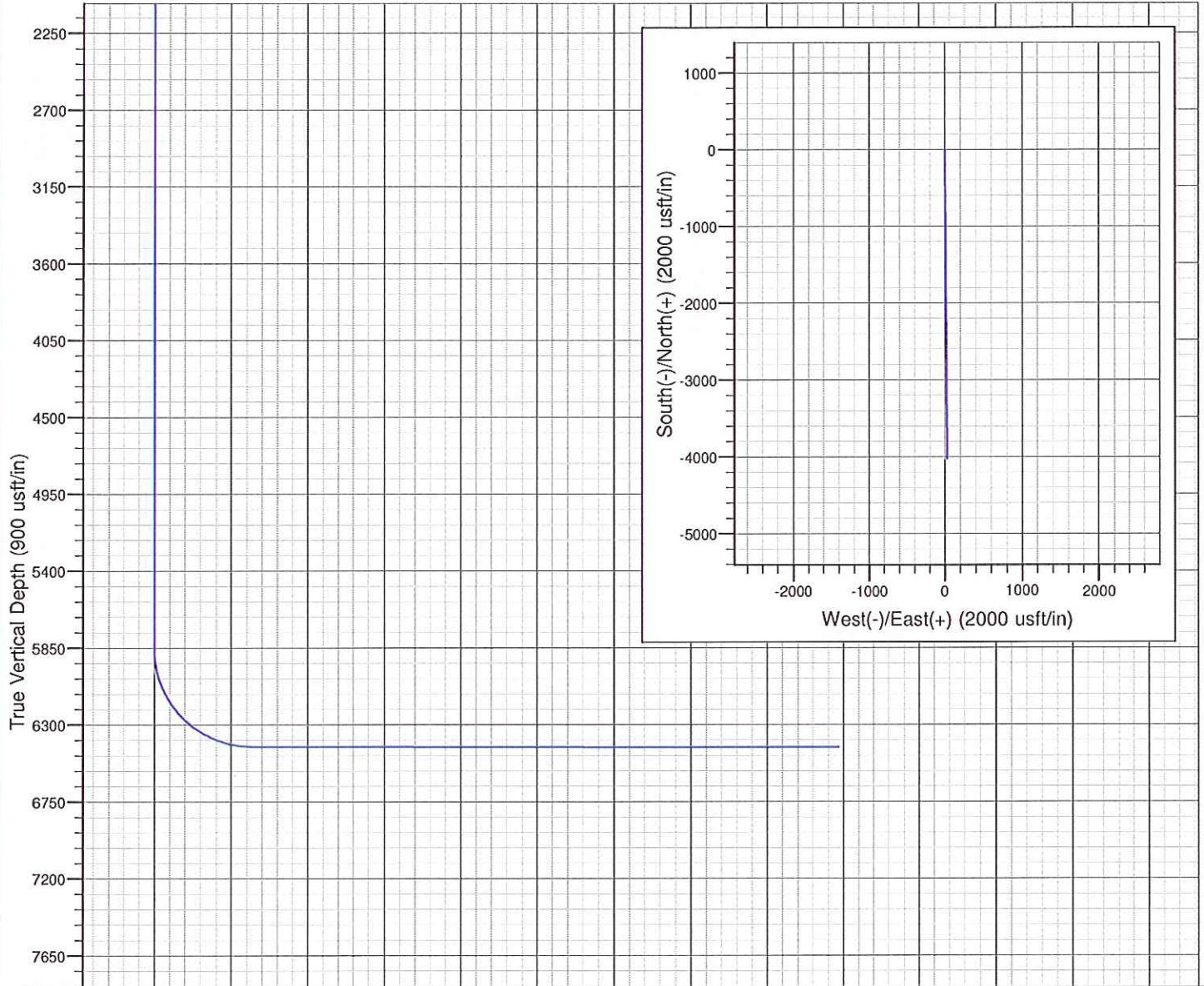


Project: Weld
 Site: Hoff 6-62 15-1H
 Well: Hoff 6-62 15-1H
 Wellbore: Hoff 6-62 15-1H
 Design: Design #1



SECTION DETAILS

Sec	MD	Inc	Azi	TVD	+N/-S	+E/-W	Dleg	TFace	VSect	Target
1	0.0	0.00	0.00	0.0	0.0	0.0	0.00	0.00	0.0	
2	5853.0	0.00	0.00	5853.0	0.0	0.0	0.00	0.00	0.0	
3	6752.0	89.90	179.60	6426.0	-571.9	4.0	10.00	179.60	572.0	
4	10201.2	89.90	179.60	6432.0	-4021.1	28.3	0.00	0.00	4021.2	Hoff 6-62 15-1H_BHL

Vertical Section at 179.60° (900 usft/in)

WELLBORE TARGET DETAILS

Name	TVD	+N/-S	+E/-W	Shape
Hoff 6-62 15-1H_BHL	6432.0	-4021.1	28.3	Point

LEGEND

— Design #1

Chesapeake -Rockies District

Weld

Hoff 6-62 15-1H

Hoff 6-62 15-1H

Hoff 6-62 15-1H

Plan: Design #1

Standard Planning Report

05 January, 2011

Chesapeake Operating

Planning Report

Database:	Drilling Database	Local Co-ordinate Reference:	Site Hoff 6-62 15-1H
Company:	Chesapeake -Rockies District	TVD Reference:	RKB @ 4753.0usft (Original Well Elev)
Project:	Weld	MD Reference:	RKB @ 4753.0usft (Original Well Elev)
Site:	Hoff 6-62 15-1H	North Reference:	Grid
Well:	Hoff 6-62 15-1H	Survey Calculation Method:	Minimum Curvature
Wellbore:	Hoff 6-62 15-1H		
Design:	Design #1		

Project	Weld		
Map System:	US State Plane 1927 (Exact solution)	System Datum:	Mean Sea Level
Geo Datum:	NAD 1927 (NADCON CONUS)		
Map Zone:	Colorado North 501		

Site	Hoff 6-62 15-1H		
Site Position:		Northing:	424,600.06 ft
From:	Map	Easting:	2,332,335.65 ft
Position Uncertainty:	0.0 usft	Slot Radius:	0.000 in
		Latitude:	40° 29' 34.08169520 N
		Longitude:	104° 18' 18.41516281 W
		Grid Convergence:	0.77 °

Well	Hoff 6-62 15-1H		
Well Position	+N/-S	0.0 usft	Northing:
	+E/-W	0.0 usft	Easting:
Position Uncertainty	0.0 usft	Wellhead Elevation:	Ground Level:
			4,734.0 usft

Wellbore	Hoff 6-62 15-1H		
Magnetics	Model Name	Sample Date	Declination
			(°)
	IGRF200510	1/5/2011	8.64
			Dip Angle
			(°)
			67.23
			Field Strength
			(nT)
			53,296

Design	Design #1		
Audit Notes:			
Version:	Phase:	PROTOTYPE	Tie On Depth:
			0.0
Vertical Section:	Depth From (TVD)	+N/-S	+E/-W
	(usft)	(usft)	(usft)
	0.0	0.0	0.0
			Direction
			(°)
			179.60

Plan Sections										
Measured Depth	Inclination	Azimuth	Vertical Depth	+N/-S	+E/-W	Dogleg Rate	Build Rate	Turn Rate	TFO	Target
(usft)	(°)	(°)	(usft)	(usft)	(usft)	(°/100usft)	(°/100usft)	(°/100usft)	(°)	
0.0	0.00	0.00	0.0	0.0	0.0	0.00	0.00	0.00	0.00	
5,853.0	0.00	0.00	5,853.0	0.0	0.0	0.00	0.00	0.00	0.00	
6,752.0	89.90	179.60	6,426.0	-571.9	4.0	10.00	10.00	0.00	179.60	
10,201.2	89.90	179.60	6,432.0	-4,021.1	28.3	0.00	0.00	0.00	0.00	Hoff 6-62 15-1H_BHL

Chesapeake Operating

Planning Report

Database:	Drilling Database	Local Co-ordinate Reference:	Site Hoff 6-62 15-1H
Company:	Chesapeake -Rockies District	TVD Reference:	RKB @ 4753.0usft (Original Well Elev)
Project:	Weld	MD Reference:	RKB @ 4753.0usft (Original Well Elev)
Site:	Hoff 6-62 15-1H	North Reference:	Grid
Well:	Hoff 6-62 15-1H	Survey Calculation Method:	Minimum Curvature
Wellbore:	Hoff 6-62 15-1H		
Design:	Design #1		

Planned Survey

Measured Depth (usft)	Inclination (°)	Azimuth (°)	Vertical Depth (usft)	+N/-S (usft)	+E/-W (usft)	Vertical Section (usft)	Dogleg Rate (°/100usft)	Build Rate (°/100usft)	Turn Rate (°/100usft)
0.0	0.00	0.00	0.0	0.0	0.0	0.0	0.00	0.00	0.00
100.0	0.00	0.00	100.0	0.0	0.0	0.0	0.00	0.00	0.00
200.0	0.00	0.00	200.0	0.0	0.0	0.0	0.00	0.00	0.00
300.0	0.00	0.00	300.0	0.0	0.0	0.0	0.00	0.00	0.00
400.0	0.00	0.00	400.0	0.0	0.0	0.0	0.00	0.00	0.00
500.0	0.00	0.00	500.0	0.0	0.0	0.0	0.00	0.00	0.00
600.0	0.00	0.00	600.0	0.0	0.0	0.0	0.00	0.00	0.00
700.0	0.00	0.00	700.0	0.0	0.0	0.0	0.00	0.00	0.00
800.0	0.00	0.00	800.0	0.0	0.0	0.0	0.00	0.00	0.00
900.0	0.00	0.00	900.0	0.0	0.0	0.0	0.00	0.00	0.00
1,000.0	0.00	0.00	1,000.0	0.0	0.0	0.0	0.00	0.00	0.00
1,100.0	0.00	0.00	1,100.0	0.0	0.0	0.0	0.00	0.00	0.00
1,200.0	0.00	0.00	1,200.0	0.0	0.0	0.0	0.00	0.00	0.00
1,300.0	0.00	0.00	1,300.0	0.0	0.0	0.0	0.00	0.00	0.00
1,400.0	0.00	0.00	1,400.0	0.0	0.0	0.0	0.00	0.00	0.00
1,500.0	0.00	0.00	1,500.0	0.0	0.0	0.0	0.00	0.00	0.00
1,600.0	0.00	0.00	1,600.0	0.0	0.0	0.0	0.00	0.00	0.00
1,700.0	0.00	0.00	1,700.0	0.0	0.0	0.0	0.00	0.00	0.00
1,800.0	0.00	0.00	1,800.0	0.0	0.0	0.0	0.00	0.00	0.00
1,900.0	0.00	0.00	1,900.0	0.0	0.0	0.0	0.00	0.00	0.00
2,000.0	0.00	0.00	2,000.0	0.0	0.0	0.0	0.00	0.00	0.00
2,100.0	0.00	0.00	2,100.0	0.0	0.0	0.0	0.00	0.00	0.00
2,200.0	0.00	0.00	2,200.0	0.0	0.0	0.0	0.00	0.00	0.00
2,300.0	0.00	0.00	2,300.0	0.0	0.0	0.0	0.00	0.00	0.00
2,400.0	0.00	0.00	2,400.0	0.0	0.0	0.0	0.00	0.00	0.00
2,500.0	0.00	0.00	2,500.0	0.0	0.0	0.0	0.00	0.00	0.00
2,600.0	0.00	0.00	2,600.0	0.0	0.0	0.0	0.00	0.00	0.00
2,700.0	0.00	0.00	2,700.0	0.0	0.0	0.0	0.00	0.00	0.00
2,800.0	0.00	0.00	2,800.0	0.0	0.0	0.0	0.00	0.00	0.00
2,900.0	0.00	0.00	2,900.0	0.0	0.0	0.0	0.00	0.00	0.00
3,000.0	0.00	0.00	3,000.0	0.0	0.0	0.0	0.00	0.00	0.00
3,100.0	0.00	0.00	3,100.0	0.0	0.0	0.0	0.00	0.00	0.00
3,200.0	0.00	0.00	3,200.0	0.0	0.0	0.0	0.00	0.00	0.00
3,300.0	0.00	0.00	3,300.0	0.0	0.0	0.0	0.00	0.00	0.00
3,400.0	0.00	0.00	3,400.0	0.0	0.0	0.0	0.00	0.00	0.00
3,500.0	0.00	0.00	3,500.0	0.0	0.0	0.0	0.00	0.00	0.00
3,600.0	0.00	0.00	3,600.0	0.0	0.0	0.0	0.00	0.00	0.00
3,700.0	0.00	0.00	3,700.0	0.0	0.0	0.0	0.00	0.00	0.00
3,800.0	0.00	0.00	3,800.0	0.0	0.0	0.0	0.00	0.00	0.00
3,900.0	0.00	0.00	3,900.0	0.0	0.0	0.0	0.00	0.00	0.00
4,000.0	0.00	0.00	4,000.0	0.0	0.0	0.0	0.00	0.00	0.00
4,100.0	0.00	0.00	4,100.0	0.0	0.0	0.0	0.00	0.00	0.00
4,200.0	0.00	0.00	4,200.0	0.0	0.0	0.0	0.00	0.00	0.00
4,300.0	0.00	0.00	4,300.0	0.0	0.0	0.0	0.00	0.00	0.00
4,400.0	0.00	0.00	4,400.0	0.0	0.0	0.0	0.00	0.00	0.00
4,500.0	0.00	0.00	4,500.0	0.0	0.0	0.0	0.00	0.00	0.00
4,600.0	0.00	0.00	4,600.0	0.0	0.0	0.0	0.00	0.00	0.00
4,700.0	0.00	0.00	4,700.0	0.0	0.0	0.0	0.00	0.00	0.00
4,800.0	0.00	0.00	4,800.0	0.0	0.0	0.0	0.00	0.00	0.00
4,900.0	0.00	0.00	4,900.0	0.0	0.0	0.0	0.00	0.00	0.00
5,000.0	0.00	0.00	5,000.0	0.0	0.0	0.0	0.00	0.00	0.00
5,100.0	0.00	0.00	5,100.0	0.0	0.0	0.0	0.00	0.00	0.00
5,200.0	0.00	0.00	5,200.0	0.0	0.0	0.0	0.00	0.00	0.00
5,300.0	0.00	0.00	5,300.0	0.0	0.0	0.0	0.00	0.00	0.00

Chesapeake Operating

Planning Report

Database:	Drilling Database	Local Co-ordinate Reference:	Site Hoff 6-62 15-1H
Company:	Chesapeake -Rockies District	TVD Reference:	RKB @ 4753.0usft (Original Well Elev)
Project:	Weld	MD Reference:	RKB @ 4753.0usft (Original Well Elev)
Site:	Hoff 6-62 15-1H	North Reference:	Grid
Well:	Hoff 6-62 15-1H	Survey Calculation Method:	Minimum Curvature
Wellbore:	Hoff 6-62 15-1H		
Design:	Design #1		

Planned Survey									
Measured Depth (usft)	Inclination (°)	Azimuth (°)	Vertical Depth (usft)	+N/-S (usft)	+E/-W (usft)	Vertical Section (usft)	Dogleg Rate (°/100usft)	Build Rate (°/100usft)	Turn Rate (°/100usft)
5,400.0	0.00	0.00	5,400.0	0.0	0.0	0.0	0.00	0.00	0.00
5,500.0	0.00	0.00	5,500.0	0.0	0.0	0.0	0.00	0.00	0.00
5,600.0	0.00	0.00	5,600.0	0.0	0.0	0.0	0.00	0.00	0.00
5,700.0	0.00	0.00	5,700.0	0.0	0.0	0.0	0.00	0.00	0.00
5,800.0	0.00	0.00	5,800.0	0.0	0.0	0.0	0.00	0.00	0.00
5,853.0	0.00	0.00	5,853.0	0.0	0.0	0.0	0.00	0.00	0.00
5,900.0	4.70	179.60	5,899.9	-1.9	0.0	1.9	10.00	10.00	0.00
5,950.0	9.70	179.60	5,949.5	-8.2	0.1	8.2	10.00	10.00	0.00
6,000.0	14.70	179.60	5,998.4	-18.7	0.1	18.7	10.00	10.00	0.00
6,050.0	19.70	179.60	6,046.1	-33.5	0.2	33.5	10.00	10.00	0.00
6,100.0	24.70	179.60	6,092.4	-52.4	0.4	52.4	10.00	10.00	0.00
6,150.0	29.70	179.60	6,136.9	-75.3	0.5	75.3	10.00	10.00	0.00
6,200.0	34.70	179.60	6,179.2	-101.9	0.7	101.9	10.00	10.00	0.00
6,250.0	39.70	179.60	6,219.0	-132.1	0.9	132.1	10.00	10.00	0.00
6,300.0	44.70	179.60	6,256.0	-165.7	1.2	165.7	10.00	10.00	0.00
6,350.0	49.70	179.60	6,290.0	-202.4	1.4	202.4	10.00	10.00	0.00
6,400.0	54.70	179.60	6,320.6	-241.8	1.7	241.9	10.00	10.00	0.00
6,450.0	59.70	179.60	6,347.7	-283.9	2.0	283.9	10.00	10.00	0.00
6,500.0	64.70	179.60	6,371.0	-328.1	2.3	328.1	10.00	10.00	0.00
6,550.0	69.70	179.60	6,390.4	-374.1	2.6	374.2	10.00	10.00	0.00
6,600.0	74.70	179.60	6,405.7	-421.7	3.0	421.7	10.00	10.00	0.00
6,650.0	79.70	179.60	6,416.7	-470.5	3.3	470.5	10.00	10.00	0.00
6,700.0	84.70	179.60	6,423.5	-520.0	3.7	520.0	10.00	10.00	0.00
6,752.0	89.90	179.60	6,426.0	-571.9	4.0	572.0	10.00	10.00	0.00
6,800.0	89.90	179.60	6,426.1	-619.9	4.4	619.9	0.00	0.00	0.00
6,900.0	89.90	179.60	6,426.2	-719.9	5.1	719.9	0.00	0.00	0.00
7,000.0	89.90	179.60	6,426.4	-819.9	5.8	819.9	0.00	0.00	0.00
7,100.0	89.90	179.60	6,426.6	-919.9	6.5	919.9	0.00	0.00	0.00
7,200.0	89.90	179.60	6,426.8	-1,019.9	7.2	1,019.9	0.00	0.00	0.00
7,300.0	89.90	179.60	6,426.9	-1,119.9	7.9	1,119.9	0.00	0.00	0.00
7,400.0	89.90	179.60	6,427.1	-1,219.9	8.6	1,219.9	0.00	0.00	0.00
7,500.0	89.90	179.60	6,427.3	-1,319.9	9.3	1,319.9	0.00	0.00	0.00
7,600.0	89.90	179.60	6,427.5	-1,419.9	10.0	1,419.9	0.00	0.00	0.00
7,700.0	89.90	179.60	6,427.6	-1,519.9	10.7	1,519.9	0.00	0.00	0.00
7,800.0	89.90	179.60	6,427.8	-1,619.9	11.4	1,619.9	0.00	0.00	0.00
7,900.0	89.90	179.60	6,428.0	-1,719.9	12.1	1,719.9	0.00	0.00	0.00
8,000.0	89.90	179.60	6,428.2	-1,819.9	12.8	1,819.9	0.00	0.00	0.00
8,100.0	89.90	179.60	6,428.3	-1,919.9	13.5	1,919.9	0.00	0.00	0.00
8,200.0	89.90	179.60	6,428.5	-2,019.9	14.2	2,019.9	0.00	0.00	0.00
8,300.0	89.90	179.60	6,428.7	-2,119.9	14.9	2,119.9	0.00	0.00	0.00
8,400.0	89.90	179.60	6,428.9	-2,219.9	15.7	2,219.9	0.00	0.00	0.00
8,500.0	89.90	179.60	6,429.0	-2,319.9	16.4	2,319.9	0.00	0.00	0.00
8,600.0	89.90	179.60	6,429.2	-2,419.9	17.1	2,419.9	0.00	0.00	0.00
8,700.0	89.90	179.60	6,429.4	-2,519.9	17.8	2,519.9	0.00	0.00	0.00
8,800.0	89.90	179.60	6,429.6	-2,619.9	18.5	2,619.9	0.00	0.00	0.00
8,900.0	89.90	179.60	6,429.7	-2,719.9	19.2	2,719.9	0.00	0.00	0.00
9,000.0	89.90	179.60	6,429.9	-2,819.9	19.9	2,819.9	0.00	0.00	0.00
9,100.0	89.90	179.60	6,430.1	-2,919.9	20.6	2,919.9	0.00	0.00	0.00
9,200.0	89.90	179.60	6,430.3	-3,019.9	21.3	3,019.9	0.00	0.00	0.00
9,300.0	89.90	179.60	6,430.4	-3,119.9	22.0	3,119.9	0.00	0.00	0.00
9,400.0	89.90	179.60	6,430.6	-3,219.9	22.7	3,219.9	0.00	0.00	0.00
9,500.0	89.90	179.60	6,430.8	-3,319.8	23.4	3,319.9	0.00	0.00	0.00
9,600.0	89.90	179.60	6,431.0	-3,419.8	24.1	3,419.9	0.00	0.00	0.00
9,700.0	89.90	179.60	6,431.1	-3,519.8	24.8	3,519.9	0.00	0.00	0.00

Chesapeake Operating

Planning Report

Database:	Drilling Database	Local Co-ordinate Reference:	Site Hoff 6-62 15-1H
Company:	Chesapeake -Rockies District	TVD Reference:	RKB @ 4753.0usft (Original Well Elev)
Project:	Weld	MD Reference:	RKB @ 4753.0usft (Original Well Elev)
Site:	Hoff 6-62 15-1H	North Reference:	Grid
Well:	Hoff 6-62 15-1H	Survey Calculation Method:	Minimum Curvature
Wellbore:	Hoff 6-62 15-1H		
Design:	Design #1		

Planned Survey										
Measured Depth (usft)	Inclination (°)	Azimuth (°)	Vertical Depth (usft)	+N/-S (usft)	+E/-W (usft)	Vertical Section (usft)	Dogleg Rate (°/100usft)	Bulld Rate (°/100usft)	Turn Rate (°/100usft)	
9,800.0	89.90	179.60	6,431.3	-3,619.8	25.5	3,619.9	0.00	0.00	0.00	
9,900.0	89.90	179.60	6,431.5	-3,719.8	26.2	3,719.9	0.00	0.00	0.00	
10,000.0	89.90	179.60	6,431.6	-3,819.8	26.9	3,819.9	0.00	0.00	0.00	
10,100.0	89.90	179.60	6,431.8	-3,919.8	27.6	3,919.9	0.00	0.00	0.00	
10,201.2	89.90	179.60	6,432.0	-4,021.1	28.3	4,021.2	0.00	0.00	0.00	

Design Targets									
Target Name	Dip Angle (°)	Dip Dir. (°)	TVD (usft)	+N/-S (usft)	+E/-W (usft)	Northing (ft)	Eastng (ft)	Latitude	Longitude
- hit/mlss target									
- Shape									
Hoff 6-62 15-1H_BHL	0.00	0.00	6,432.0	-4,021.1	28.3	420,579.00	2,332,364.00	0° 28' 54.34542935 N	4° 18' 18.74948860 W
- plan hits target center									
- Point									