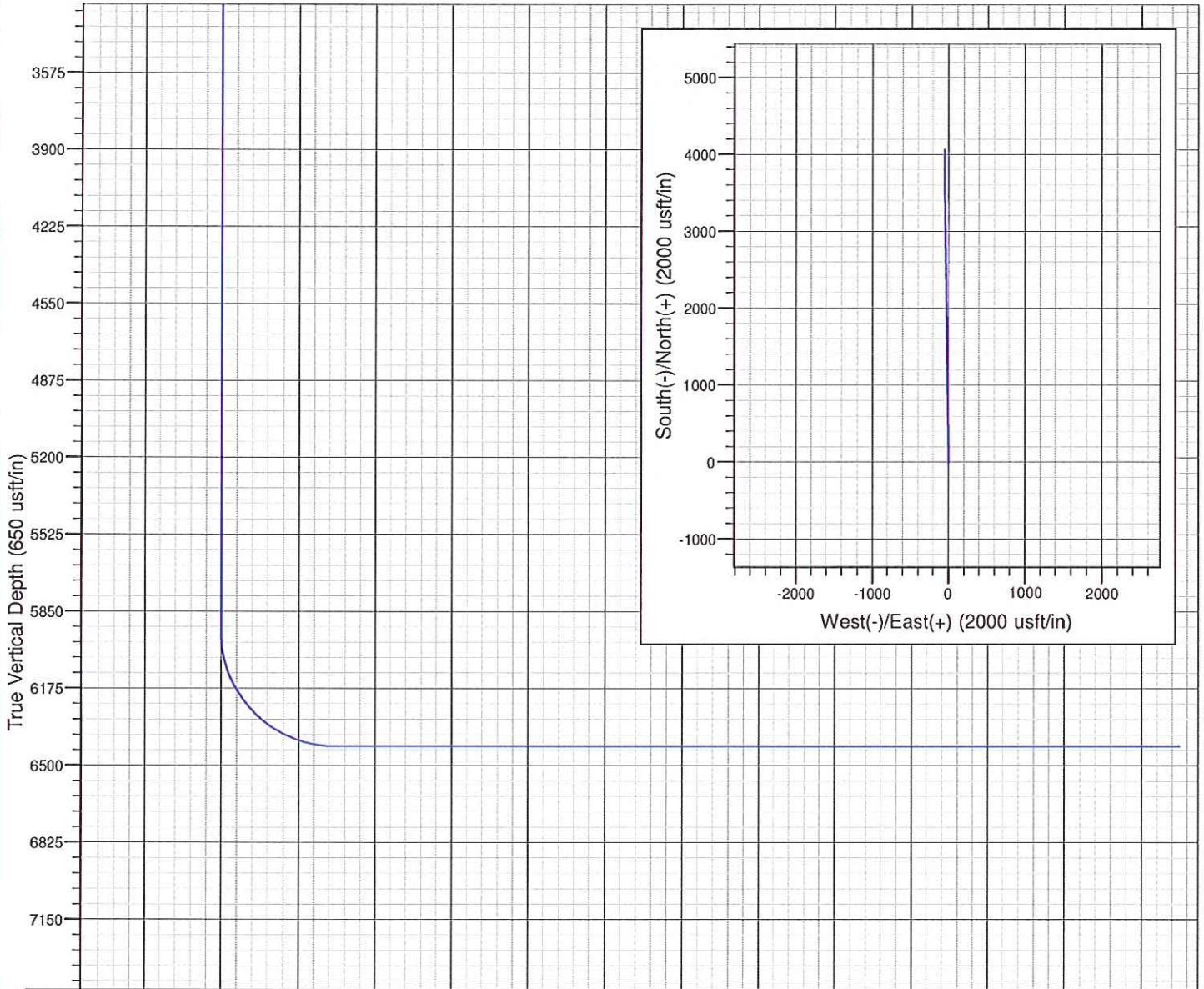


Project: Weld
 Site: Girard 2-63 11-1H
 Well: Girard 2-63 11-1H
 Wellbore: Wellbore #1
 Design: Design #1



SECTION DETAILS

Sec	MD	Inc	Azi	TVD	+N/-S	+E/-W	Dleg	TFace	VSect	Target
1	0.0	0.00	0.00	0.0	0.0	0.0	0.00	0.00	0.0	
2	5940.5	0.00	0.00	5940.5	0.0	0.0	0.00	0.00	0.0	
3	6690.5	90.00	359.20	6418.0	477.4	-6.6	12.00	359.20	477.5	
4	10275.2	90.00	359.20	6418.0	4061.8	-56.5	0.00	0.00	4062.2	BHL_Girard 2-63 11-1H

Vertical Section at 359.20° (650 usft/in)

WELLBORE TARGET DETAILS

Name	TVD	+N/-S	+E/-W	Shape
BHL_Girard 2-63 11-1H	6418.0	4061.8	-56.5	Point

LEGEND

Design #1

Chesapeake -Rockies District

Weld

Girard 2-63 11-1H

Girard 2-63 11-1H

Wellbore #1

Plan: Design #1

Standard Planning Report

05 January, 2011

Chesapeake Operating

Planning Report

Database:	Drilling Database	Local Co-ordinate Reference:	Site Girard 2-63 11-1H
Company:	Chesapeake -Rockies District	TVD Reference:	RKB @ 4765.0usft
Project:	Weld	MD Reference:	RKB @ 4765.0usft
Site:	Girard 2-63 11-1H	North Reference:	Grid
Well:	Girard 2-63 11-1H	Survey Calculation Method:	Minimum Curvature
Wellbore:	Wellbore #1		
Design:	Design #1		

Project	Weld		
Map System:	US State Plane 1927 (Exact solution)	System Datum:	Mean Sea Level
Geo Datum:	NAD 1927 (NADCON CONUS)		
Map Zone:	Colorado North 501		

Site	Girard 2-63 11-1H				
Site Position:	Northing:	298,396.23 ft	Latitude:	40° 8' 50.23519941 N	
From:	Map	Easting:	2,306,980.55 ft	Longitude:	104° 24' 6.79562846 W
Position Uncertainty:	0.0 usft	Slot Radius:	0.000 in	Grid Convergence:	0.71 °

Well	Girard 2-63 11-1H					
Well Position	+N/-S	0.0 usft	Northing:	298,396.23 ft	Latitude:	40° 8' 50.23519941 N
	+E/-W	0.0 usft	Easting:	2,306,980.55 ft	Longitude:	104° 24' 6.79562846 W
Position Uncertainty	0.0 usft	Wellhead Elevation:		Ground Level:	4,745.0 usft	

Wellbore	Wellbore #1				
Magnetics	Model Name	Sample Date	Declination (°)	Dip Angle (°)	Field Strength (nT)
	IGRF200510	7/30/2010	8.73	66.95	53,151

Design	Design #1			
Audit Notes:				
Version:	Phase:	PROTOTYPE	Tie On Depth:	0.0
Vertical Section:	Depth From (TVD)	+N/-S	+E/-W	Direction
	(usft)	(usft)	(usft)	(°)
	0.0	0.0	0.0	359.20

Plan Sections										
Measured Depth	Inclination	Azimuth	Vertical Depth	+N/-S	+E/-W	Dogleg Rate	Build Rate	Turn Rate	TFO	Target
(usft)	(°)	(°)	(usft)	(usft)	(usft)	(°/100usft)	(°/100usft)	(°/100usft)	(°)	
0.0	0.00	0.00	0.0	0.0	0.0	0.00	0.00	0.00	0.00	
5,940.5	0.00	0.00	5,940.5	0.0	0.0	0.00	0.00	0.00	0.00	
6,690.5	90.00	359.20	6,418.0	477.4	-6.6	12.00	12.00	0.00	359.20	
10,275.2	90.00	359.20	6,418.0	4,061.8	-56.5	0.00	0.00	0.00	0.00	BHL_Girard 2-63 11-1

Chesapeake Operating

Planning Report

Database:	Drilling Database	Local Co-ordinate Reference:	Site Girard 2-63 11-1H
Company:	Chesapeake -Rockies District	TVD Reference:	RKB @ 4765.0usft
Project:	Weld	MD Reference:	RKB @ 4765.0usft
Site:	Girard 2-63 11-1H	North Reference:	Grid
Well:	Girard 2-63 11-1H	Survey Calculation Method:	Minimum Curvature
Wellbore:	Wellbore #1		
Design:	Design #1		

Planned Survey									
Measured Depth (usft)	Inclination (°)	Azimuth (°)	Vertical Depth (usft)	+N/-S (usft)	+E/-W (usft)	Vertical Section (usft)	Dogleg Rate (°/100usft)	Build Rate (°/100usft)	Turn Rate (°/100usft)
0.0	0.00	0.00	0.0	0.0	0.0	0.0	0.00	0.00	0.00
100.0	0.00	0.00	100.0	0.0	0.0	0.0	0.00	0.00	0.00
200.0	0.00	0.00	200.0	0.0	0.0	0.0	0.00	0.00	0.00
300.0	0.00	0.00	300.0	0.0	0.0	0.0	0.00	0.00	0.00
400.0	0.00	0.00	400.0	0.0	0.0	0.0	0.00	0.00	0.00
500.0	0.00	0.00	500.0	0.0	0.0	0.0	0.00	0.00	0.00
600.0	0.00	0.00	600.0	0.0	0.0	0.0	0.00	0.00	0.00
700.0	0.00	0.00	700.0	0.0	0.0	0.0	0.00	0.00	0.00
800.0	0.00	0.00	800.0	0.0	0.0	0.0	0.00	0.00	0.00
900.0	0.00	0.00	900.0	0.0	0.0	0.0	0.00	0.00	0.00
1,000.0	0.00	0.00	1,000.0	0.0	0.0	0.0	0.00	0.00	0.00
1,100.0	0.00	0.00	1,100.0	0.0	0.0	0.0	0.00	0.00	0.00
1,200.0	0.00	0.00	1,200.0	0.0	0.0	0.0	0.00	0.00	0.00
1,300.0	0.00	0.00	1,300.0	0.0	0.0	0.0	0.00	0.00	0.00
1,400.0	0.00	0.00	1,400.0	0.0	0.0	0.0	0.00	0.00	0.00
1,500.0	0.00	0.00	1,500.0	0.0	0.0	0.0	0.00	0.00	0.00
1,600.0	0.00	0.00	1,600.0	0.0	0.0	0.0	0.00	0.00	0.00
1,700.0	0.00	0.00	1,700.0	0.0	0.0	0.0	0.00	0.00	0.00
1,800.0	0.00	0.00	1,800.0	0.0	0.0	0.0	0.00	0.00	0.00
1,900.0	0.00	0.00	1,900.0	0.0	0.0	0.0	0.00	0.00	0.00
2,000.0	0.00	0.00	2,000.0	0.0	0.0	0.0	0.00	0.00	0.00
2,100.0	0.00	0.00	2,100.0	0.0	0.0	0.0	0.00	0.00	0.00
2,200.0	0.00	0.00	2,200.0	0.0	0.0	0.0	0.00	0.00	0.00
2,300.0	0.00	0.00	2,300.0	0.0	0.0	0.0	0.00	0.00	0.00
2,400.0	0.00	0.00	2,400.0	0.0	0.0	0.0	0.00	0.00	0.00
2,500.0	0.00	0.00	2,500.0	0.0	0.0	0.0	0.00	0.00	0.00
2,600.0	0.00	0.00	2,600.0	0.0	0.0	0.0	0.00	0.00	0.00
2,700.0	0.00	0.00	2,700.0	0.0	0.0	0.0	0.00	0.00	0.00
2,800.0	0.00	0.00	2,800.0	0.0	0.0	0.0	0.00	0.00	0.00
2,900.0	0.00	0.00	2,900.0	0.0	0.0	0.0	0.00	0.00	0.00
3,000.0	0.00	0.00	3,000.0	0.0	0.0	0.0	0.00	0.00	0.00
3,100.0	0.00	0.00	3,100.0	0.0	0.0	0.0	0.00	0.00	0.00
3,200.0	0.00	0.00	3,200.0	0.0	0.0	0.0	0.00	0.00	0.00
3,300.0	0.00	0.00	3,300.0	0.0	0.0	0.0	0.00	0.00	0.00
3,400.0	0.00	0.00	3,400.0	0.0	0.0	0.0	0.00	0.00	0.00
3,500.0	0.00	0.00	3,500.0	0.0	0.0	0.0	0.00	0.00	0.00
3,600.0	0.00	0.00	3,600.0	0.0	0.0	0.0	0.00	0.00	0.00
3,700.0	0.00	0.00	3,700.0	0.0	0.0	0.0	0.00	0.00	0.00
3,800.0	0.00	0.00	3,800.0	0.0	0.0	0.0	0.00	0.00	0.00
3,900.0	0.00	0.00	3,900.0	0.0	0.0	0.0	0.00	0.00	0.00
4,000.0	0.00	0.00	4,000.0	0.0	0.0	0.0	0.00	0.00	0.00
4,100.0	0.00	0.00	4,100.0	0.0	0.0	0.0	0.00	0.00	0.00
4,200.0	0.00	0.00	4,200.0	0.0	0.0	0.0	0.00	0.00	0.00
4,300.0	0.00	0.00	4,300.0	0.0	0.0	0.0	0.00	0.00	0.00
4,400.0	0.00	0.00	4,400.0	0.0	0.0	0.0	0.00	0.00	0.00
4,500.0	0.00	0.00	4,500.0	0.0	0.0	0.0	0.00	0.00	0.00
4,600.0	0.00	0.00	4,600.0	0.0	0.0	0.0	0.00	0.00	0.00
4,700.0	0.00	0.00	4,700.0	0.0	0.0	0.0	0.00	0.00	0.00
4,800.0	0.00	0.00	4,800.0	0.0	0.0	0.0	0.00	0.00	0.00
4,900.0	0.00	0.00	4,900.0	0.0	0.0	0.0	0.00	0.00	0.00
5,000.0	0.00	0.00	5,000.0	0.0	0.0	0.0	0.00	0.00	0.00
5,100.0	0.00	0.00	5,100.0	0.0	0.0	0.0	0.00	0.00	0.00
5,200.0	0.00	0.00	5,200.0	0.0	0.0	0.0	0.00	0.00	0.00
5,300.0	0.00	0.00	5,300.0	0.0	0.0	0.0	0.00	0.00	0.00

Chesapeake Operating

Planning Report

Database:	Drilling Database	Local Co-ordinate Reference:	Site Girard 2-63 11-1H
Company:	Chesapeake -Rockies District	TVD Reference:	RKB @ 4765.0usft
Project:	Weld	MD Reference:	RKB @ 4765.0usft
Site:	Girard 2-63 11-1H	North Reference:	Grid
Well:	Girard 2-63 11-1H	Survey Calculation Method:	Minimum Curvature
Wellbore:	Wellbore #1		
Design:	Design #1		

Planned Survey										
Measured Depth (usft)	Inclination (°)	Azimuth (°)	Vertical Depth (usft)	+N/-S (usft)	+E/-W (usft)	Vertical Section (usft)	Dogleg Rate (°/100usft)	Build Rate (°/100usft)	Turn Rate (°/100usft)	
5,400.0	0.00	0.00	5,400.0	0.0	0.0	0.0	0.00	0.00	0.00	
5,500.0	0.00	0.00	5,500.0	0.0	0.0	0.0	0.00	0.00	0.00	
5,600.0	0.00	0.00	5,600.0	0.0	0.0	0.0	0.00	0.00	0.00	
5,700.0	0.00	0.00	5,700.0	0.0	0.0	0.0	0.00	0.00	0.00	
5,800.0	0.00	0.00	5,800.0	0.0	0.0	0.0	0.00	0.00	0.00	
5,900.0	0.00	0.00	5,900.0	0.0	0.0	0.0	0.00	0.00	0.00	
5,940.5	0.00	0.00	5,940.5	0.0	0.0	0.0	0.00	0.00	0.00	
5,950.0	1.14	359.20	5,950.0	0.1	0.0	0.1	12.00	12.00	0.00	
5,975.0	4.14	359.20	5,975.0	1.2	0.0	1.2	12.00	12.00	0.00	
6,000.0	7.14	359.20	5,999.8	3.7	-0.1	3.7	12.00	12.00	0.00	
6,025.0	10.14	359.20	6,024.6	7.5	-0.1	7.5	12.00	12.00	0.00	
6,050.0	13.14	359.20	6,049.0	12.5	-0.2	12.5	12.00	12.00	0.00	
6,075.0	16.14	359.20	6,073.2	18.8	-0.3	18.8	12.00	12.00	0.00	
6,100.0	19.14	359.20	6,097.1	26.4	-0.4	26.4	12.00	12.00	0.00	
6,125.0	22.14	359.20	6,120.4	35.2	-0.5	35.2	12.00	12.00	0.00	
6,150.0	25.14	359.20	6,143.3	45.2	-0.6	45.2	12.00	12.00	0.00	
6,175.0	28.14	359.20	6,165.7	56.4	-0.8	56.4	12.00	12.00	0.00	
6,200.0	31.14	359.20	6,187.4	68.8	-1.0	68.8	12.00	12.00	0.00	
6,225.0	34.14	359.20	6,208.5	82.3	-1.1	82.3	12.00	12.00	0.00	
6,250.0	37.14	359.20	6,228.8	96.8	-1.3	96.8	12.00	12.00	0.00	
6,275.0	40.14	359.20	6,248.3	112.4	-1.6	112.4	12.00	12.00	0.00	
6,300.0	43.14	359.20	6,267.0	129.0	-1.8	129.0	12.00	12.00	0.00	
6,325.0	46.14	359.20	6,284.8	146.6	-2.0	146.6	12.00	12.00	0.00	
6,350.0	49.14	359.20	6,301.6	165.1	-2.3	165.1	12.00	12.00	0.00	
6,375.0	52.14	359.20	6,317.5	184.4	-2.6	184.4	12.00	12.00	0.00	
6,400.0	55.14	359.20	6,332.3	204.5	-2.8	204.5	12.00	12.00	0.00	
6,425.0	58.14	359.20	6,346.0	225.4	-3.1	225.4	12.00	12.00	0.00	
6,450.0	61.14	359.20	6,358.7	247.0	-3.4	247.0	12.00	12.00	0.00	
6,475.0	64.14	359.20	6,370.2	269.1	-3.7	269.2	12.00	12.00	0.00	
6,500.0	67.14	359.20	6,380.5	291.9	-4.1	291.9	12.00	12.00	0.00	
6,525.0	70.14	359.20	6,389.6	315.2	-4.4	315.2	12.00	12.00	0.00	
6,550.0	73.14	359.20	6,397.5	338.9	-4.7	339.0	12.00	12.00	0.00	
6,575.0	76.14	359.20	6,404.1	363.0	-5.1	363.1	12.00	12.00	0.00	
6,600.0	79.14	359.20	6,409.4	387.4	-5.4	387.5	12.00	12.00	0.00	
6,625.0	82.14	359.20	6,413.5	412.1	-5.7	412.1	12.00	12.00	0.00	
6,650.0	85.14	359.20	6,416.3	436.9	-6.1	437.0	12.00	12.00	0.00	
6,675.0	88.14	359.20	6,417.7	461.9	-6.4	461.9	12.00	12.00	0.00	
6,690.5	90.00	359.20	6,418.0	477.4	-6.6	477.5	12.00	12.00	0.00	
6,700.0	90.00	359.20	6,418.0	486.9	-6.8	486.9	0.00	0.00	0.00	
6,800.0	90.00	359.20	6,418.0	586.9	-8.2	586.9	0.00	0.00	0.00	
6,900.0	90.00	359.20	6,418.0	686.9	-9.6	686.9	0.00	0.00	0.00	
7,000.0	90.00	359.20	6,418.0	786.9	-11.0	786.9	0.00	0.00	0.00	
7,100.0	90.00	359.20	6,418.0	886.8	-12.3	886.9	0.00	0.00	0.00	
7,200.0	90.00	359.20	6,418.0	986.8	-13.7	986.9	0.00	0.00	0.00	
7,300.0	90.00	359.20	6,418.0	1,086.8	-15.1	1,086.9	0.00	0.00	0.00	
7,400.0	90.00	359.20	6,418.0	1,186.8	-16.5	1,186.9	0.00	0.00	0.00	
7,500.0	90.00	359.20	6,418.0	1,286.8	-17.9	1,286.9	0.00	0.00	0.00	
7,600.0	90.00	359.20	6,418.0	1,386.8	-19.3	1,386.9	0.00	0.00	0.00	
7,700.0	90.00	359.20	6,418.0	1,486.8	-20.7	1,486.9	0.00	0.00	0.00	
7,800.0	90.00	359.20	6,418.0	1,586.8	-22.1	1,586.9	0.00	0.00	0.00	
7,900.0	90.00	359.20	6,418.0	1,686.8	-23.5	1,686.9	0.00	0.00	0.00	
8,000.0	90.00	359.20	6,418.0	1,786.8	-24.9	1,786.9	0.00	0.00	0.00	
8,100.0	90.00	359.20	6,418.0	1,886.7	-26.3	1,886.9	0.00	0.00	0.00	
8,200.0	90.00	359.20	6,418.0	1,986.7	-27.7	1,986.9	0.00	0.00	0.00	

Chesapeake Operating

Planning Report

Database:	Drilling Database	Local Co-ordinate Reference:	Site Girard 2-63 11-1H
Company:	Chesapeake -Rockies District	TVD Reference:	RKB @ 4765.0usft
Project:	Weld	MD Reference:	RKB @ 4765.0usft
Site:	Girard 2-63 11-1H	North Reference:	Grid
Well:	Girard 2-63 11-1H	Survey Calculation Method:	Minimum Curvature
Wellbore:	Wellbore #1		
Design:	Design #1		

Planned Survey										
Measured Depth (usft)	Inclination (°)	Azimuth (°)	Vertical Depth (usft)	+N/-S (usft)	+E/-W (usft)	Vertical Section (usft)	Dogleg Rate (°/100usft)	Build Rate (°/100usft)	Turn Rate (°/100usft)	
8,300.0	90.00	359.20	6,418.0	2,086.7	-29.1	2,086.9	0.00	0.00	0.00	
8,400.0	90.00	359.20	6,418.0	2,186.7	-30.4	2,186.9	0.00	0.00	0.00	
8,500.0	90.00	359.20	6,418.0	2,286.7	-31.8	2,286.9	0.00	0.00	0.00	
8,600.0	90.00	359.20	6,418.0	2,386.7	-33.2	2,386.9	0.00	0.00	0.00	
8,700.0	90.00	359.20	6,418.0	2,486.7	-34.6	2,486.9	0.00	0.00	0.00	
8,800.0	90.00	359.20	6,418.0	2,586.7	-36.0	2,586.9	0.00	0.00	0.00	
8,900.0	90.00	359.20	6,418.0	2,686.7	-37.4	2,686.9	0.00	0.00	0.00	
9,000.0	90.00	359.20	6,418.0	2,786.7	-38.8	2,786.9	0.00	0.00	0.00	
9,100.0	90.00	359.20	6,418.0	2,886.6	-40.2	2,886.9	0.00	0.00	0.00	
9,200.0	90.00	359.20	6,418.0	2,986.6	-41.6	2,986.9	0.00	0.00	0.00	
9,300.0	90.00	359.20	6,418.0	3,086.6	-43.0	3,086.9	0.00	0.00	0.00	
9,400.0	90.00	359.20	6,418.0	3,186.6	-44.4	3,186.9	0.00	0.00	0.00	
9,500.0	90.00	359.20	6,418.0	3,286.6	-45.8	3,286.9	0.00	0.00	0.00	
9,600.0	90.00	359.20	6,418.0	3,386.6	-47.1	3,386.9	0.00	0.00	0.00	
9,700.0	90.00	359.20	6,418.0	3,486.6	-48.5	3,486.9	0.00	0.00	0.00	
9,800.0	90.00	359.20	6,418.0	3,586.6	-49.9	3,586.9	0.00	0.00	0.00	
9,900.0	90.00	359.20	6,418.0	3,686.6	-51.3	3,686.9	0.00	0.00	0.00	
10,000.0	90.00	359.20	6,418.0	3,786.6	-52.7	3,786.9	0.00	0.00	0.00	
10,100.0	90.00	359.20	6,418.0	3,886.6	-54.1	3,886.9	0.00	0.00	0.00	
10,200.0	90.00	359.20	6,418.0	3,986.5	-55.5	3,986.9	0.00	0.00	0.00	
10,275.2	90.00	359.20	6,418.0	4,061.8	-56.5	4,062.2	0.00	0.00	0.00	

Design Targets										
Target Name	Dip Angle (°)	Dip Dir. (°)	TVD (usft)	+N/-S (usft)	+E/-W (usft)	Northing (ft)	Easting (ft)	Latitude Longitude		
- hit/miss target										
- Shape										
BHL_Girard 2-63 11-1H	0.00	3.64	6,418.0	4,061.8	-56.5	302,458.00	2,306,924.00	40° 9' 30.38007300 N 14° 24' 6.87609638 W		
- plan hits target center										
- Point										