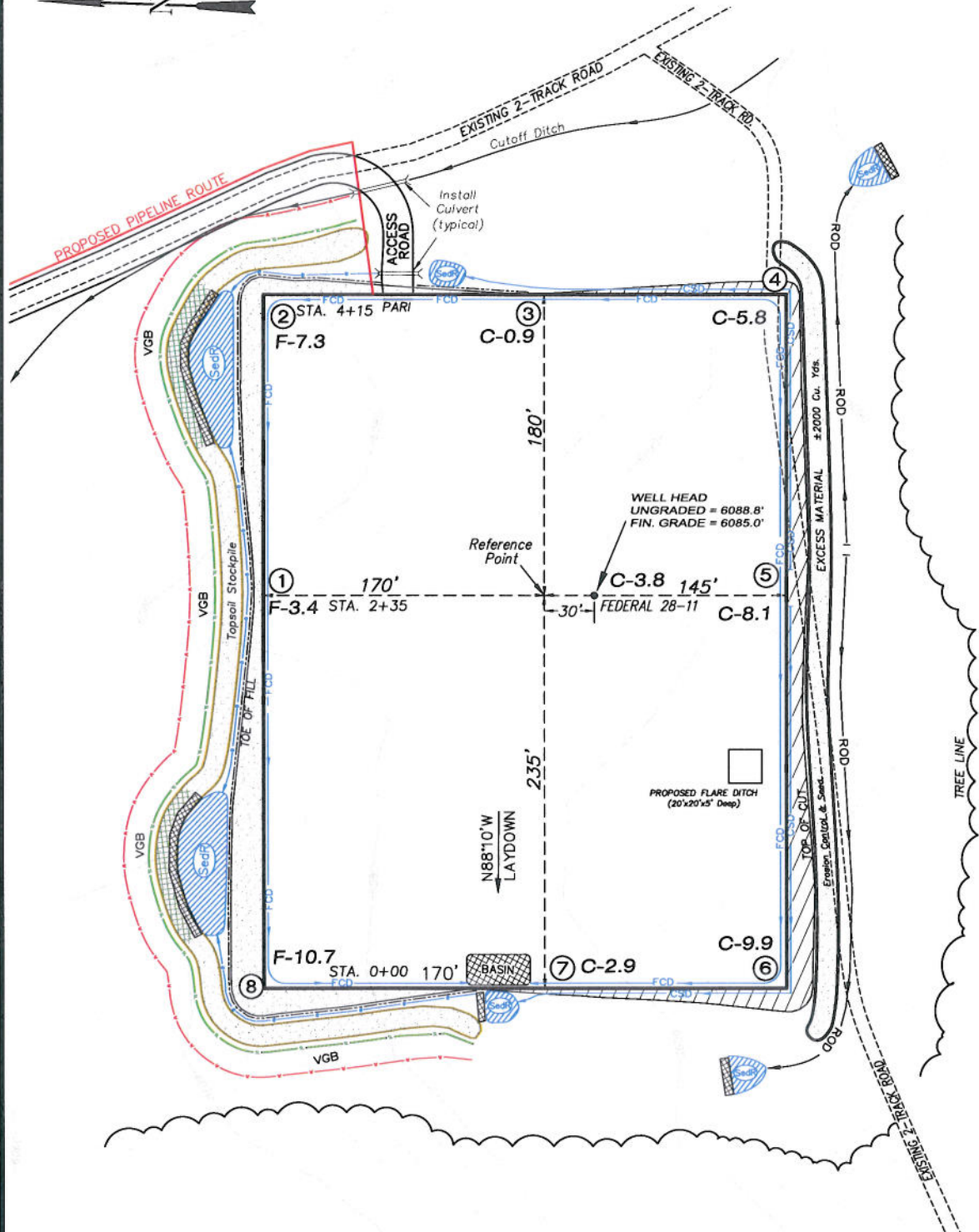


EnCana Oil & Gas (USA) Inc.

PL28SW Well Pad

NE1/4 SW1/4, SECTION 28, T9S, R96W, 6th P.M.

WELL PAD LAYOUT



Total Surface Disturbance = 5.34 Acres
(See Sheet 4 for Details)

- NOTES:
- (1) Slope Track and/or Terrace all Slopes and Piles
 - (2) Erosion Control & Seed Topsoil
 - (3) Erosion Control & Seed Outside
 - (4) Slope away from Substructure Areas 1% to 3% to Flow Control

- LEGEND
- SLASH = SLASH
 - ST = SEDIMENT TRAP
 - SR = SEDIMENT RESERVOIR
 - R.O.D. = RUN-ON DIVERSION
 - PERMETER CONTROL (WATTLES)
 - CSD = CUT SLOPE DIVERSION (BERM TOE OF CUT SLOPE)
 - D = FILL DIVERSION TO SEDIMENT TRAP
 - VGB = VEGETATION BUFFER (UNDISTURBED LAND INSIDE PC)
 - FCD = FLOW CONTROL DITCH
 - PARI = PAD/ACCESS ROAD INTERFACE
 - LEVEL SPREADER
 - TOE BERM (PLACED AT TOE OF ALL FILL SLOPES/STOCKPILES)
 - TOPSOIL BERM
 - SEED, ECB & FLEX
 - SEED

SURFACE DISTURBANCE (IN ACRES)	
Well Pad	3.0
Side Slopes	0.4
Topsoil & Waste Material	1.94
TOTAL	5.34



906 Main Street
Evanston, Wyoming 82930
Phone No. (307) 789-4545



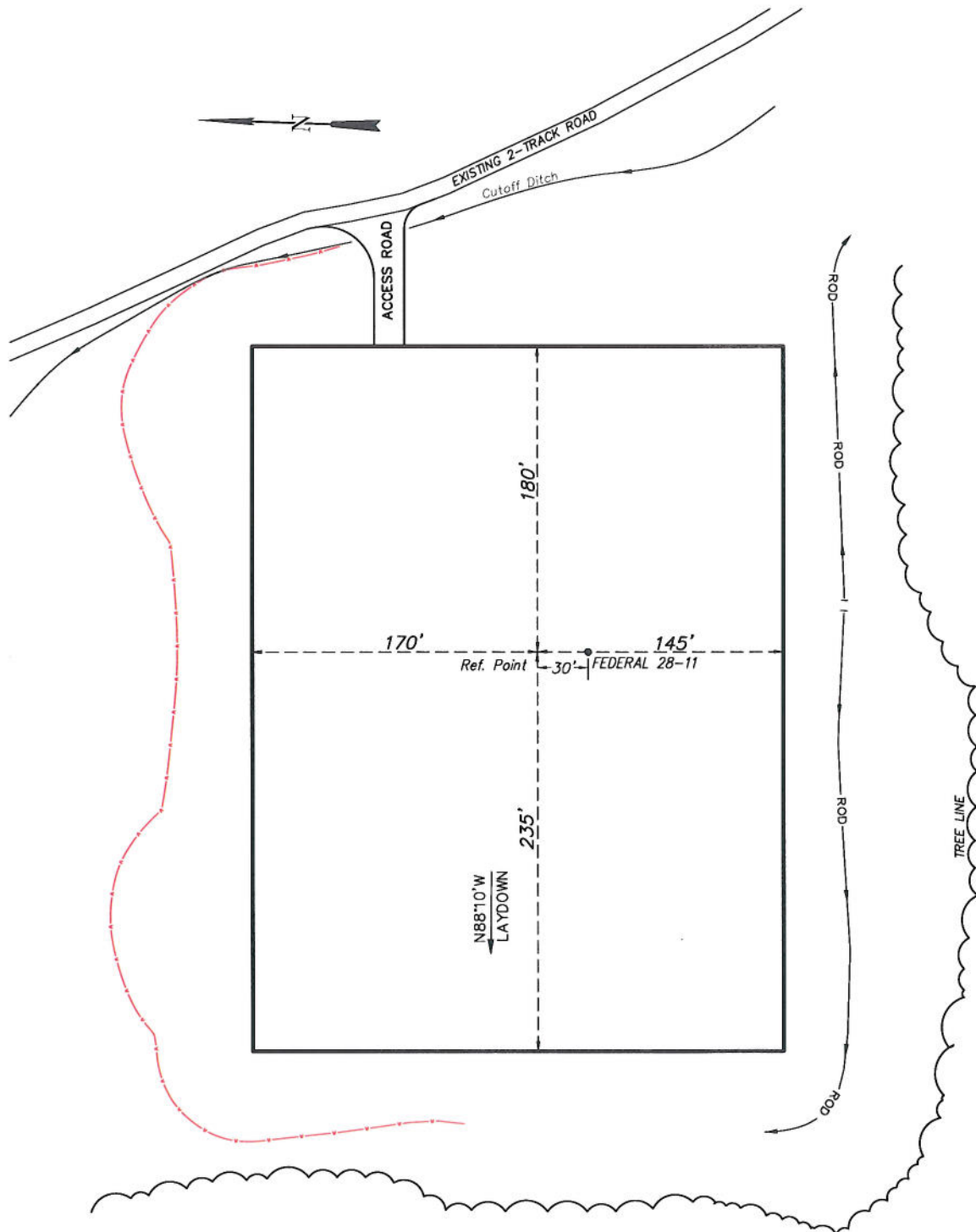
Well Pad Layout		Scale: 1" = 60'	SHEET
Project No.	09-04-32	Date Surveyed: 7/09/09	3
Date Drawn: 7/29/09		Latest Revision Date: 12/14/10	OF 10

EnCana Oil & Gas (USA) Inc.

PL28SW Well Pad

NE1/4 SW1/4, SECTION 28, T9S, R96W, 6th P.M.

PRE-CONSTRUCTION PLAT



Total Surface Disturbance = 5.34 Acres
(See Sheet 4 for Details)

NOTES:

- (1) Slope Track and/or Terrace all Slopes and Piles
- (2) Erosion Control & Seed Topsoil
- (3) Erosion Control & Seed Outside
- (4) Slope away from Substructure Areas 1% to 3% to Flow Control

LEGEND

- SL = SLASH
- ST = SEDIMENT TRAP
- SR = SEDIMENT RESERVOIR
- R.O.D. = RUN-ON DIVERSION
- PC = PERIMETER CONTROL (WATTLES)
- CSD = CUT SLOPE DIVERSION (BERM TOE OF CUT SLOPE)
- D = FILL DIVERSION TO SEDIMENT TRAP
- VBG = VEGETATION BUFFER (UNDISTURBED LAND INSIDE PC)
- FCD = FLOW CONTROL DITCH
- PAR = PAD/ACCESS ROAD INTERFACE
- LS = LEVEL SPREADER
- T.B. = TOE BERM (PLACED AT TOE OF ALL FILL SLOPES/STOCKPILES)
- T.B. = TOPSOIL BERM
- SEED, ECB & FLEX
- SEED

PRE-CONSTRUCTION PHASE COMPLETE,
AUTHORIZATION TO CONTINUE
CONSTRUCTION.

SIGNATURE: _____



906 Main Street
Evanston, Wyoming 82930
Phone No. (307) 789-4545

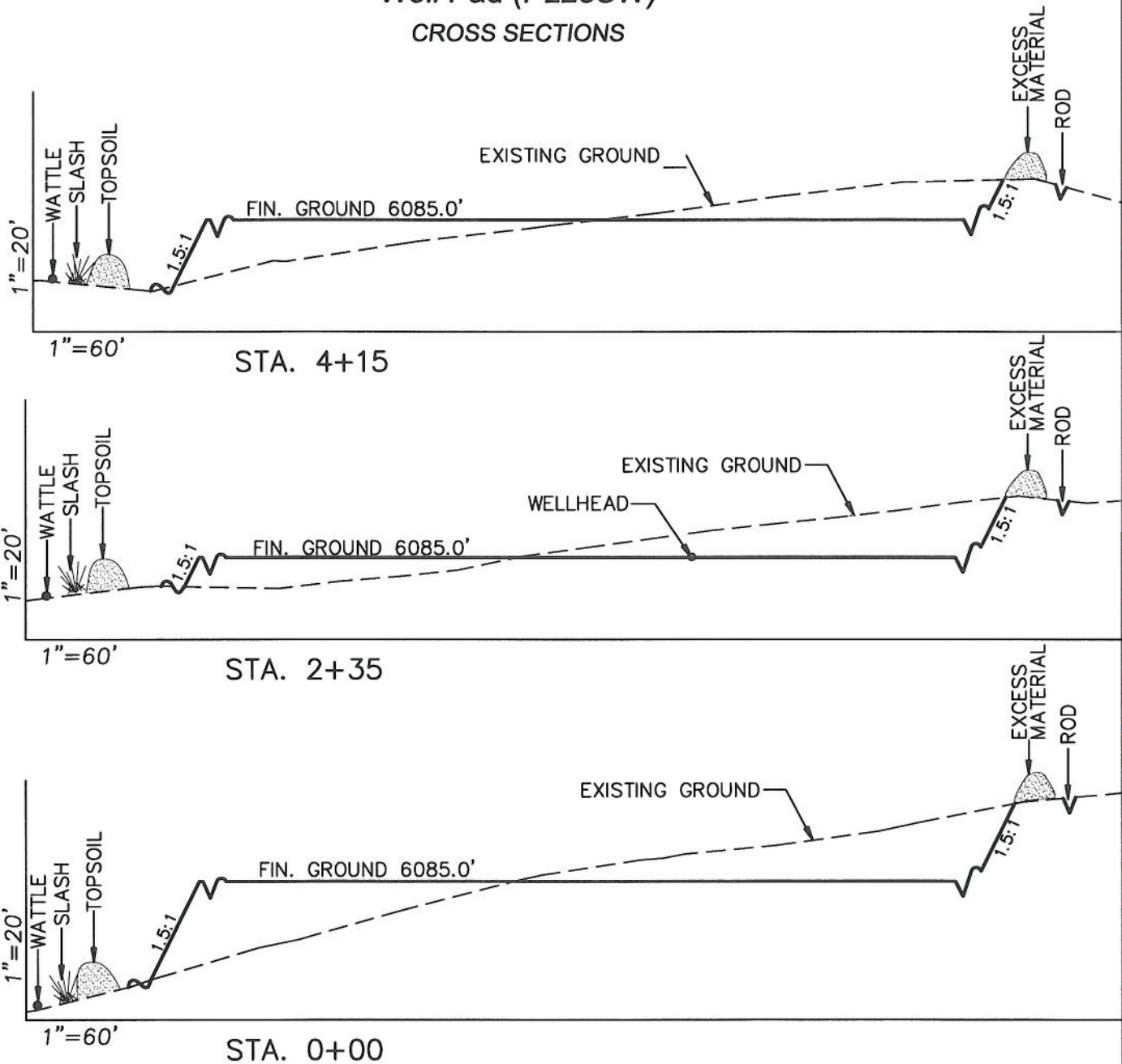


Pre-Construction		Scale: 1" = 60'	SHEET
Project No.	09-04-32	Date Surveyed: 7/09/09	3a
Date Drawn: 7/29/09		Latest Revision Date: 12/14/10	OF 10

EnCana Oil & Gas (USA) Inc.

Well Pad (PL28SW)

CROSS SECTIONS



SURFACE DISTURBANCE (IN ACRES)

Well Pad	3.0
Side Slopes	0.4
Topsoil & Waste Material	1.94
TOTAL	5.34

NOTE:
ALL CUT AND FILL
SLOPES ARE AT 1.5:1
UNLESS OTHERWISE
NOTED.

EARTHWORK QUANTITIES

(in Cubic Yards w/ 0% shrink/swell)

ITEM	CUT	FILL	6" TOPSOIL	EXCESS
PAD	12961	10961	Topsoil not included in Excavation	2000
PIT	0	0		0
TOTALS	12961	10961	2701	2000



906 Main Street
Evanston, Wyoming 82930
Phone No. (307) 789-4545

Cross Sections

Project
No. 09-04-32
Date
Drawn: 7/29/09

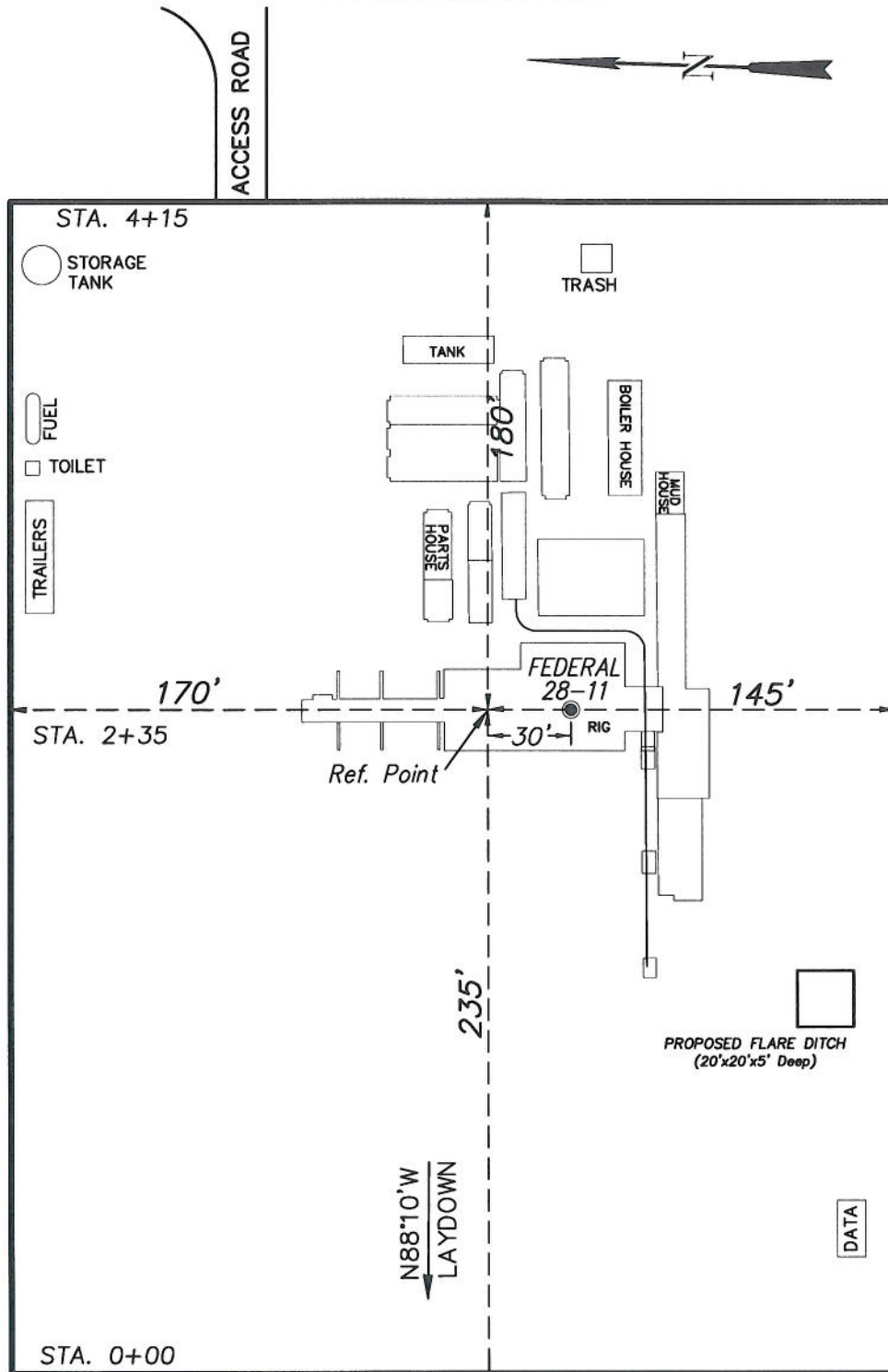
Scale: As Shown

Date
Surveyed: 7/09/09
Latest Revision
Date: 12/14/10

SHEET

4
OF 10

EnCana Oil & Gas (USA) Inc.
Well Pad (PL28SW)
TYPICAL RIG LAYOUT



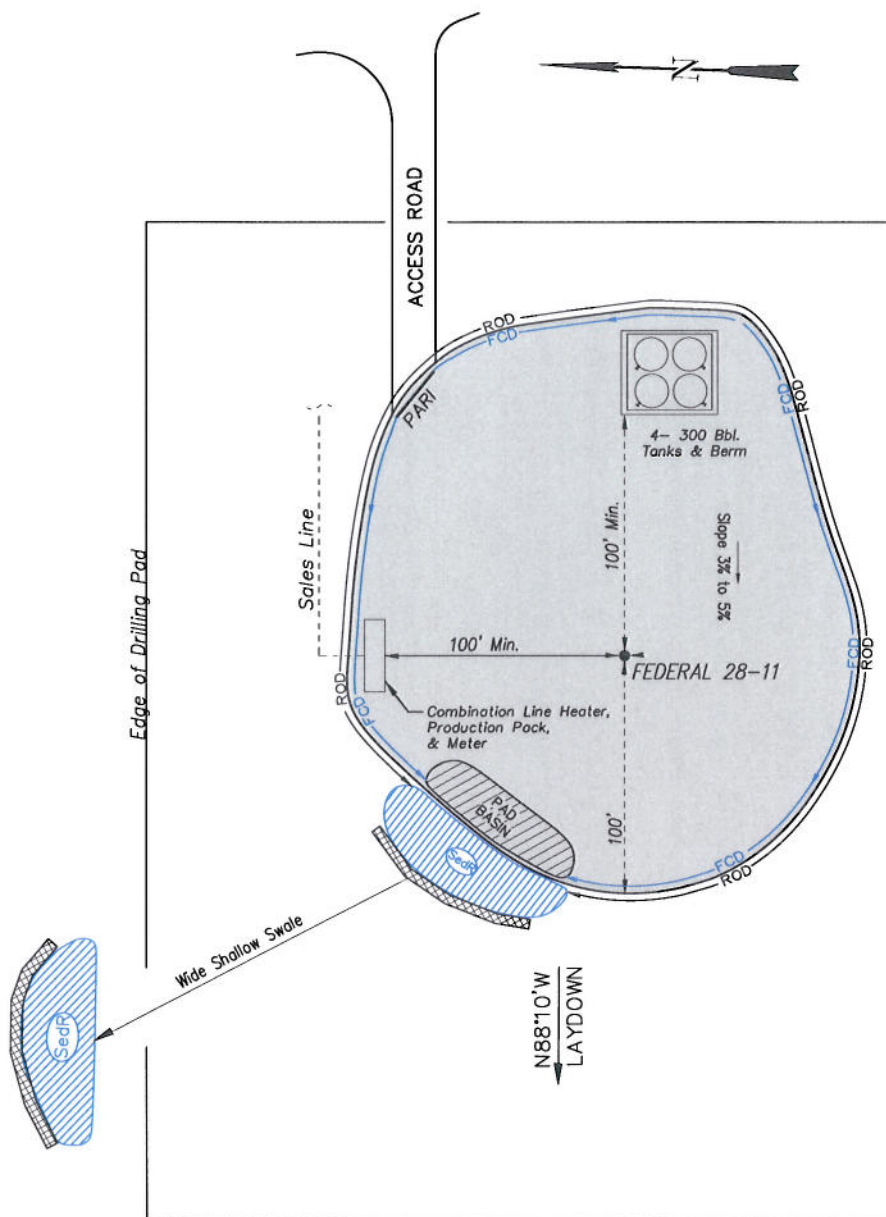
(SCALE IN FEET)



906 Main Street
 Evanston, Wyoming 82930
 Phone No. (307) 789-4545

Rig Layout		Scale: 1" = 60'	SHEET 5 OF 10
Project No.	09-04-32	Date Surveyed: 7/09/09	
Date Drawn:	7/29/09	Latest Revision Date: 12/14/10	

EnCana Oil & Gas (USA) Inc.
PL28SW Well Pad
PRODUCTION SCHEMATIC



NOTES:

1. Set Tanks High so pad Entrance & Tank Area Can Drain to Pad Basin
2. Gravel Pad 75' from Wells & Around Tanks and Separators
3. Pad Drains to Pad Basin at a 3% to 5% slope
4. BMP Selection and Position may change Depending on Actual Conditions Encountered During the Construction Process

NOTE:

Actual Equipment Layout and Reclaimed Pad Surface Area May Change due to Production Requirements or Site Conditions.

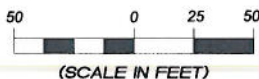
ESTIMATED AREAS
RECLAIMED AREA: 4.34 ACRES
UNRECLAIMED AREA: 1.0 ACRES

LEGEND:

- SLASH = SLASH
- ST = SEDIMENT TRAP
- SR = SEDIMENT RESERVOIR
- R.O.D. = RUN-ON DIVERSION
- PERMETER CONTROL (WATTLES)
- CSD = CUT SLOPE DIVERSION (BERM TOE OF CUT SLOPE)
- D = FILL DIVERSION TO SEDIMENT TRAP
- VBS = VEGETATION BUFFER (UNDISTURBED LAND INSIDE PC)
- FCD = FLOW CONTROL DITCH
- PARI = PAD/ACCESS ROAD INTERFACE
- LEVEL SPREADER
- TOE BERM (PLACED AT TOE OF ALL FILL SLOPES/STOCKPILES)
- TOPSOIL BERM
- SEED, ECB & FLEX
- SEED



906 Main Street
 Evanston, Wyoming 82930
 Phone No. (307) 789-4545



Production Schematic

Project No. 09-04-32
 Date Drawn: 7/29/09

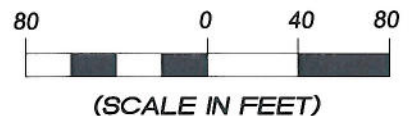
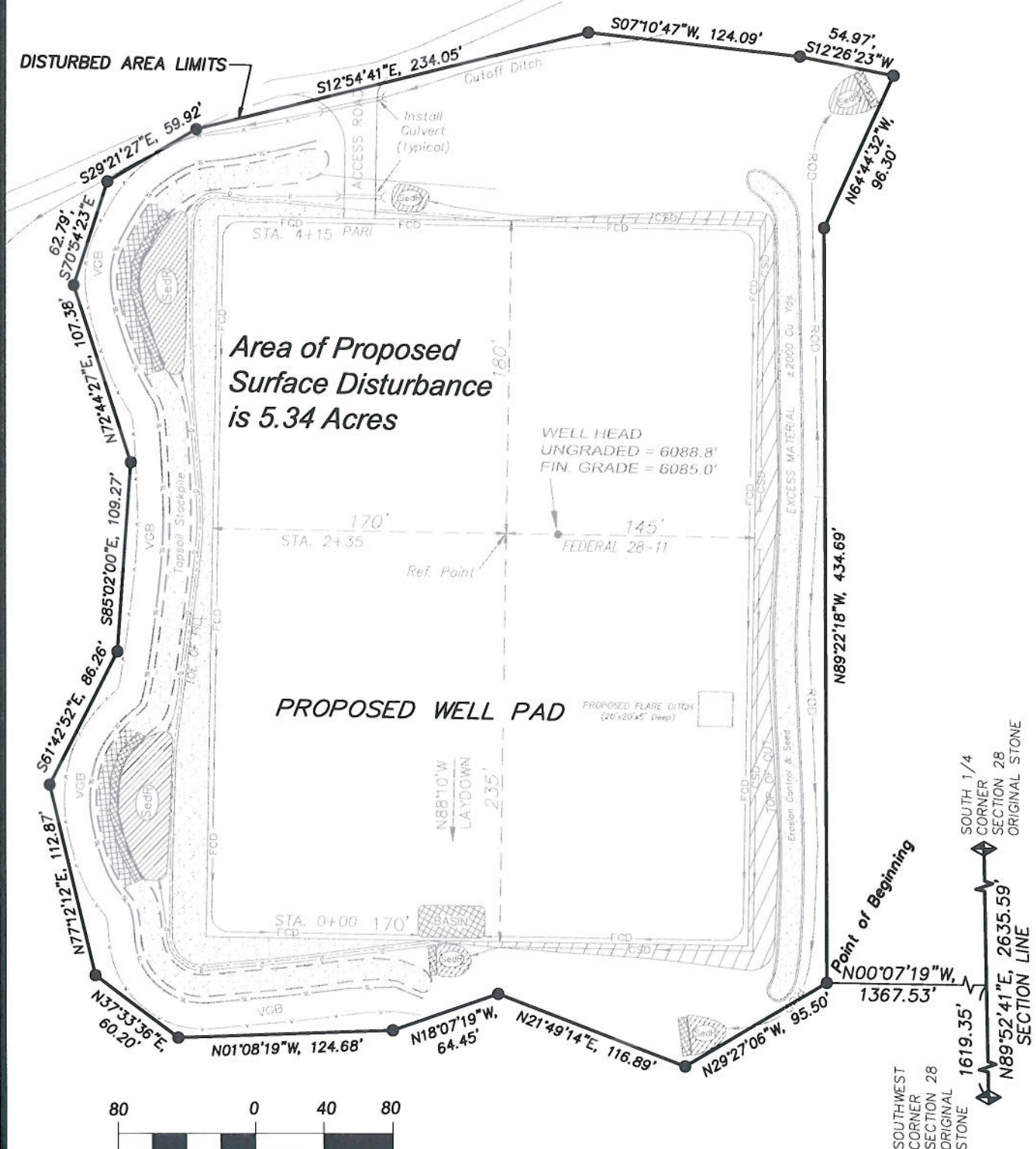
Scale: 1" = 50'

Date Surveyed: 7/09/09
 Latest Revision Date: 12/14/10

SHEET

6
 OF 10

EnCana Oil & Gas (USA) Inc.
Well Pad (PL28SW)
Section 28, T9S, R96W, 6th P.M.
SURFACE DISTURBANCE AREA



906 Main Street
 Evanston, Wyoming 82930
 Phone No. (307) 789-4545

Surface Disturbance		Scale: 1" = 80'	SHEET
Project No.	09-04-32	Date Surveyed: 7/09/09	7
Date Drawn: 7/29/09		Latest Revision Date: 12/14/10	OF 10