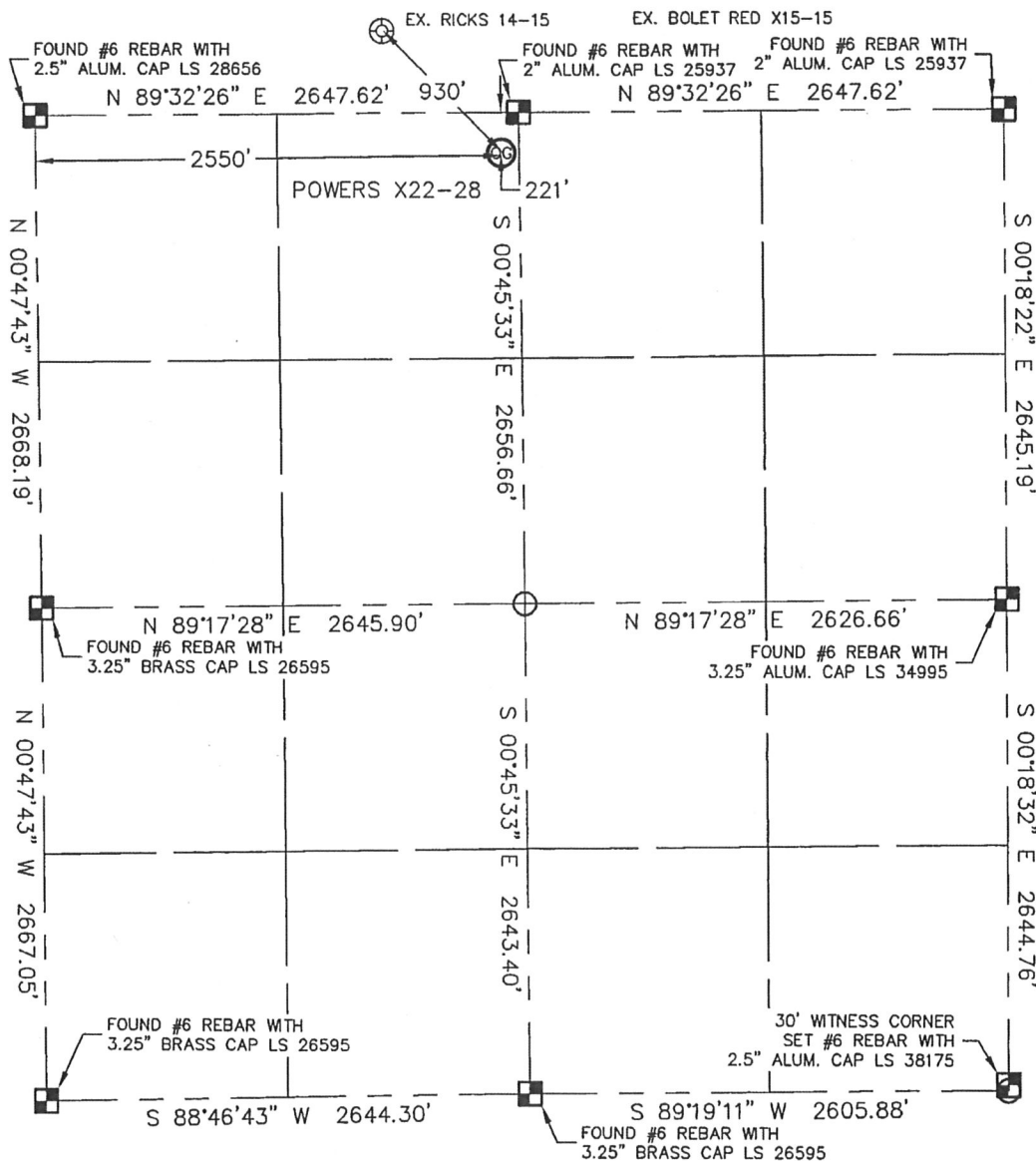


# WELL LOCATION CERTIFICATE

SECTION: 22  
TOWNSHIP: 2N  
RANGE: 65W

THIS MAP DOES NOT REPRESENT A BOUNDARY SURVEY



In accordance with a request from Mike Rodine with Noble Energy Inc.

Lat40°, LLC has determined the surface location of the POWERS X22-28 to be 221' from the NORTH line and 2550' from the WEST line as measured at right angles from the section line of Section 22, Township 2 North, Range 65 West of the Sixth Principal Meridian, County of Weld, State of Colorado.

I hereby state that this Well Location Certificate was prepared by me, or under my direct supervision, that the fieldwork was completed on 8/31/10, for and on behalf of Noble Energy Inc. That this is not a Land Survey Plat or an Improvement Survey Plat, and that it is not to be relied upon for establishment of fence, building, or other future improvement lines.

**NOTE:**

- 1) Bearings shown are Grid Bearings of the Colorado State Plane Coordinate System, North Zone, North American Datum 1983/2007. The lineal dimensions as contained herein are based upon the "U.S. Survey Foot."
- 2) Ground elevations are based on an observed GPS elevation (NAVD 1988 DATUM).
- 3) NEAREST EXISTING WELL: RICKS 14-15 930'
- 4) IMPROVEMENTS: See LOCATION DRAWING exhibit for all visible improvements within 400' of disturbed area.
- 5) SURFACE USE: RANGELAND
- 6) INSTRUMENT OPERATOR: KYLE RUTZ

**NOTE**

According to Colorado law, you must commence any legal action based upon any defect in this W.L.C. within three years after you discover such defect. In no event, may any action based upon any defect in this survey be commenced more than ten years after the date of the certificate shown hereon. (13-80-105 C.R.S.)

**SURFACE LOCATION**

LATITUDE: 40.13078°N  
LONGITUDE: 104.65045°W  
PDOP: 1.8  
ELEV: 4880  
1/4, 1/4: NE1/4NW1/4  
NEAREST PROPERTY LINE: 221' NORTH



Brian T. Brinkman—On behalf of Lat40°, LLC  
Colorado Licensed Professional  
Land Surveyor No. 38175

PROJECT#: 2010052

Lat40°, LLC

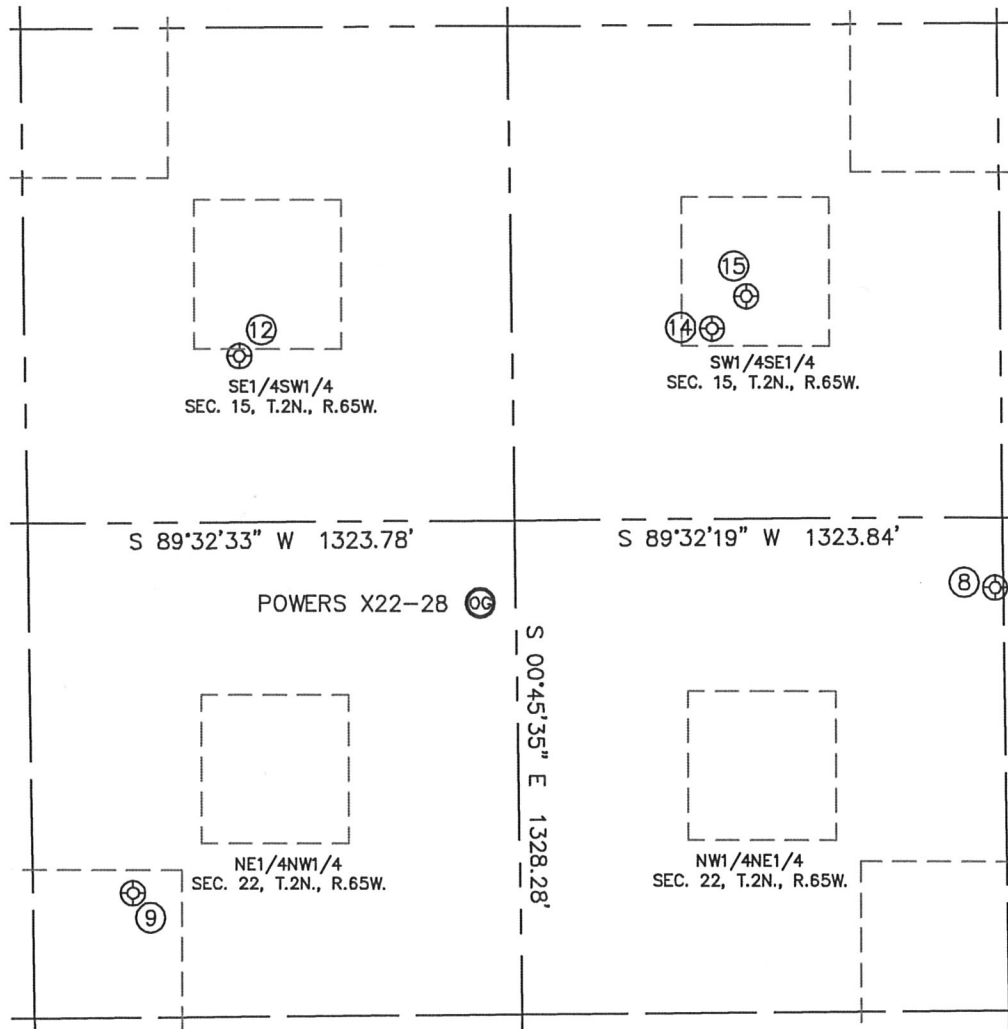
1635 Foxtrail Drive, Suite 325

Loveland, CO 80538

# SITE SKETCH

POWERS X22-28

SECTION: 22  
TOWNSHIP: 2N  
RANGE: 65W



⑧

ROBERT POWERS X22-27  
NW1/4NE1/4  
189' FNL  
1346' FEL  
LAT-40.13086°N  
LONG-104.64545°W  
PDOP: 2.1  
ELEV: 4895

⑨

POWERS 21-22  
NE1/4NW1/4  
995' FNL  
1595' FWL  
LAT-40.12866°N  
LONG-104.65385°W  
PDOP: 2.2  
ELEV: 4886

⑫

RICKS 14-15  
SE1/4SW1/4  
446' FSL  
1906' FWL  
LAT-40.13261°N  
LONG-104.65276°W  
PDOP: 1.4  
ELEV: 4874

⑭

BOLET RED X15-15  
SW1/4SE1/4  
512' FSL  
2109' FEL  
LAT-40.13279°N  
LONG-104.64817°W  
PDOP: 1.8  
ELEV: 4878

⑮

BOLET RED X15-15J  
SW1/4SE1/4  
598' FSL  
2015' FEL  
LAT-40.13302°N  
LONG-104.64783°W  
PDOP: 1.8  
ELEV: 4878

