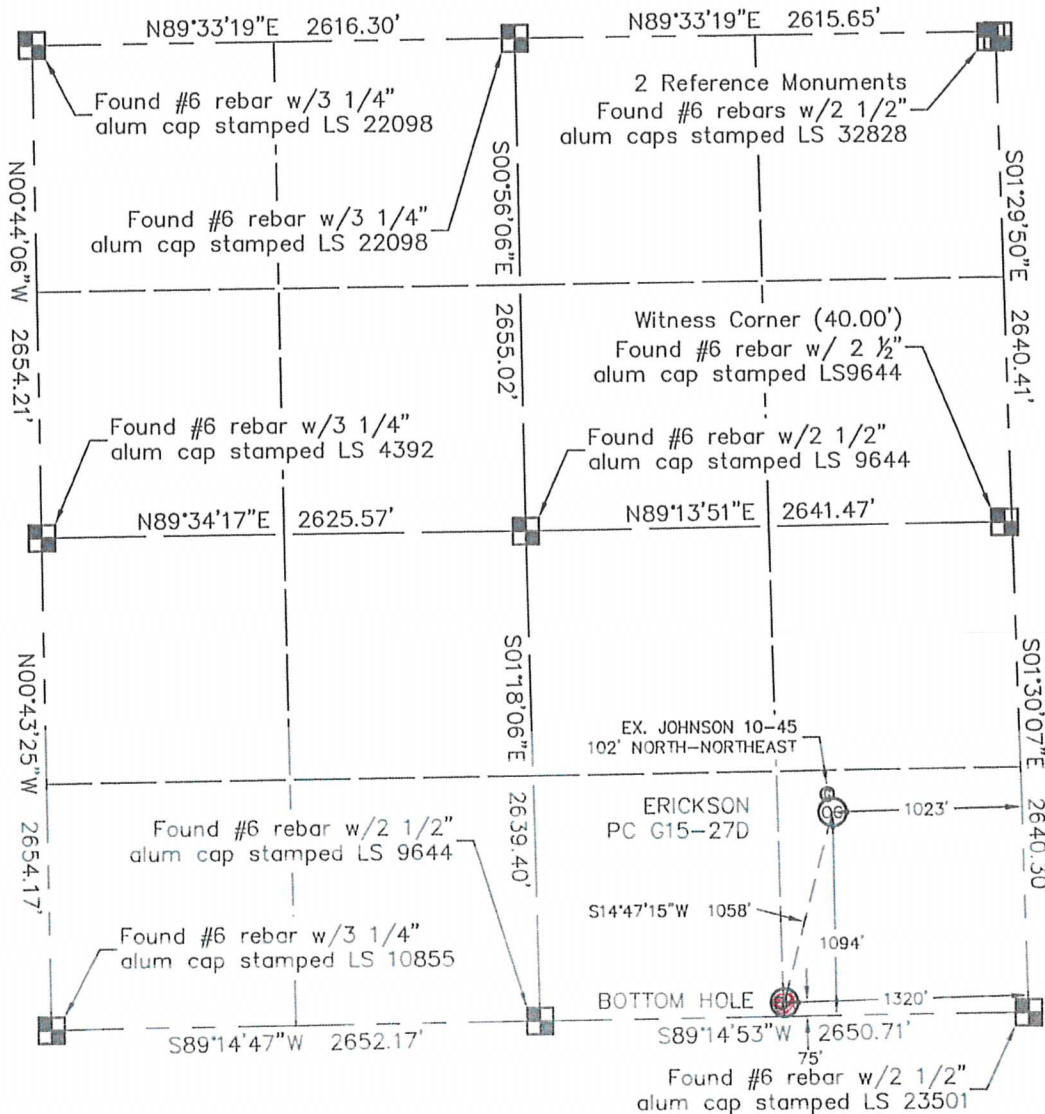
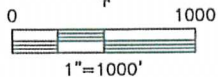


WELL LOCATION CERTIFICATE

THIS MAP DOES NOT REPRESENT A BOUNDARY SURVEY

SECTION: 10
TOWNSHIP: 4N
RANGE: 65WIn accordance with a request from BEAU FRITZ with NOBLE ENERGY INC.King Surveyors Inc. has determined the surface location of the ERICKSON PC G15-27D to be 1094' from the South line and 1023' from the East line and the bottom hole to be 75' from the South line and 1320' from the East line, as measured at right angles, from the section lines of Section 10, Township 4 North, Range 65 West of the Sixth Principal Meridian, County of Weld, State of Colorado.I hereby state that this Well Location Certificate was prepared by me, or under my direct supervision, that the fieldwork was completed on 6-28-2010, for and on behalf of NOBLE ENERGY INC. That this is not a Land Survey Plat or an Improvement Survey Plat, and that it is not to be relied upon for establishment of fence, building, or other future improvement lines.

NOTE:

- 1) Bearings shown are Grid Bearings of the Colorado State Plane Coordinate System, North Zone, North American Datum 1983/2007. The lineal dimensions as contained herein are based upon the "U.S. Survey Foot."
- 2) Ground elevations are based on an observed GPS elevation (NAVD 1988 DATUM).
- 3) NEAREST EXISTING WELL: JOHNSON 10-45 102' NORTH-NORTHEAST
- 4) IMPROVEMENTS: See VISIBLE IMPROVEMENTS exhibit for all visible improvements within 400' of well head.
- 5) SURFACE USE: PASTURE

SURFACE LOCATION

LATITUDE: 40.32275°N
 LONGITUDE: 104.64332°W
 PDOP: 1.7
 ELEV: 4680'
 1/4, 1/4: SE1/4 SE1/4
 NEAREST PROPERTY LINE: 1023' EAST

BOTTOM HOLE

LATITUDE: 40.31995°N
 LONGITUDE: 104.64432°W

NOTE

According to Colorado law, you must commence any legal action based upon any defect in this W.L.C. within three years after you discover such defect. In no event, may any action based upon any defect in this survey be commenced more than ten years after the date of the certificate shown hereon. (13-80-105 C.R.S.)

LEGEND

- = ALIQUOT MONUMENT AS DESCRIBED
 ○ = CALCULATED POSITION

Michael Chada Dika 33 On Behalf Of King Surveyors, Inc.
 Colorado Licensed Professional Land Surveyor #38106

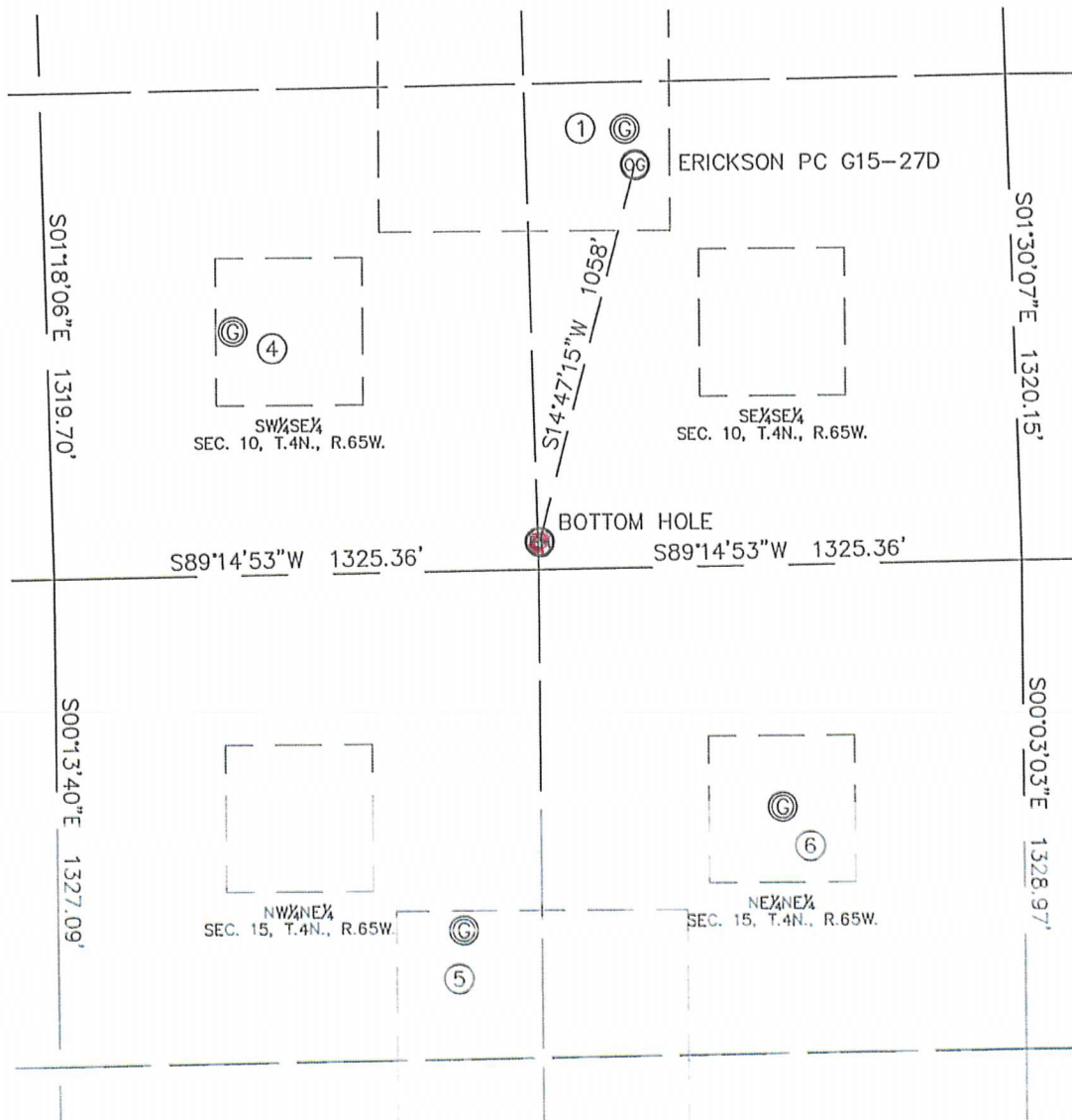
PROJECT#: 2010250



7/9/2010

SITE SKETCH

SECTION: 10
TOWNSHIP: 4N
RANGE: 65W

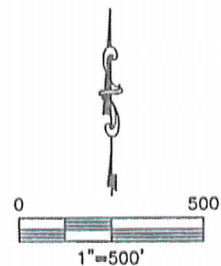
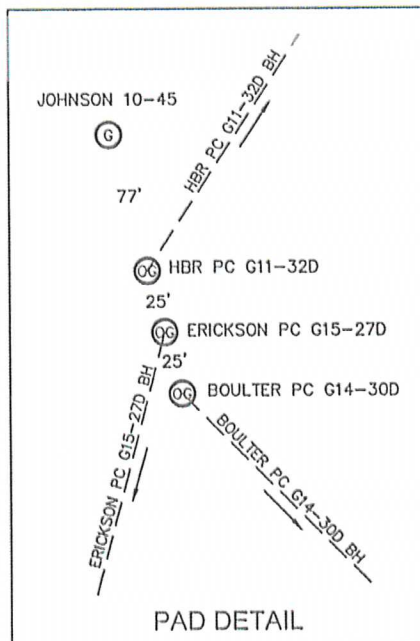


①
JOHNSON 10-45
SE1/4 SE1/4 SEC 10
1193' FSL
1048' FEL
LAT-40.32302°N
LONG-104.64341°W
PDOP: 1.3
ELEV: 4680'

④
BOULTER 10-43
SW1/4 SE1/4 SEC 10
663' FSL
2141' FEL
LAT-40.32156°N
LONG-104.64730°W
PDOP: 2.1
ELEV: 4684'

⑤
JOLLY ROGER 1
NW1/4 NE1/4 SEC 15
977' FNL
1540' FEL
LAT-40.31707°N
LONG-104.64514°W
PDOP: 3.1
ELEV: 4687'

⑥
REEVE 41-15 1
NE1/4 NE1/4 SEC 15
658' FNL
661' FEL
LAT-40.31795°N
LONG-104.64197°W
PDOP: 2.7
ELEV: 4686'



PROJECT#: 2010250