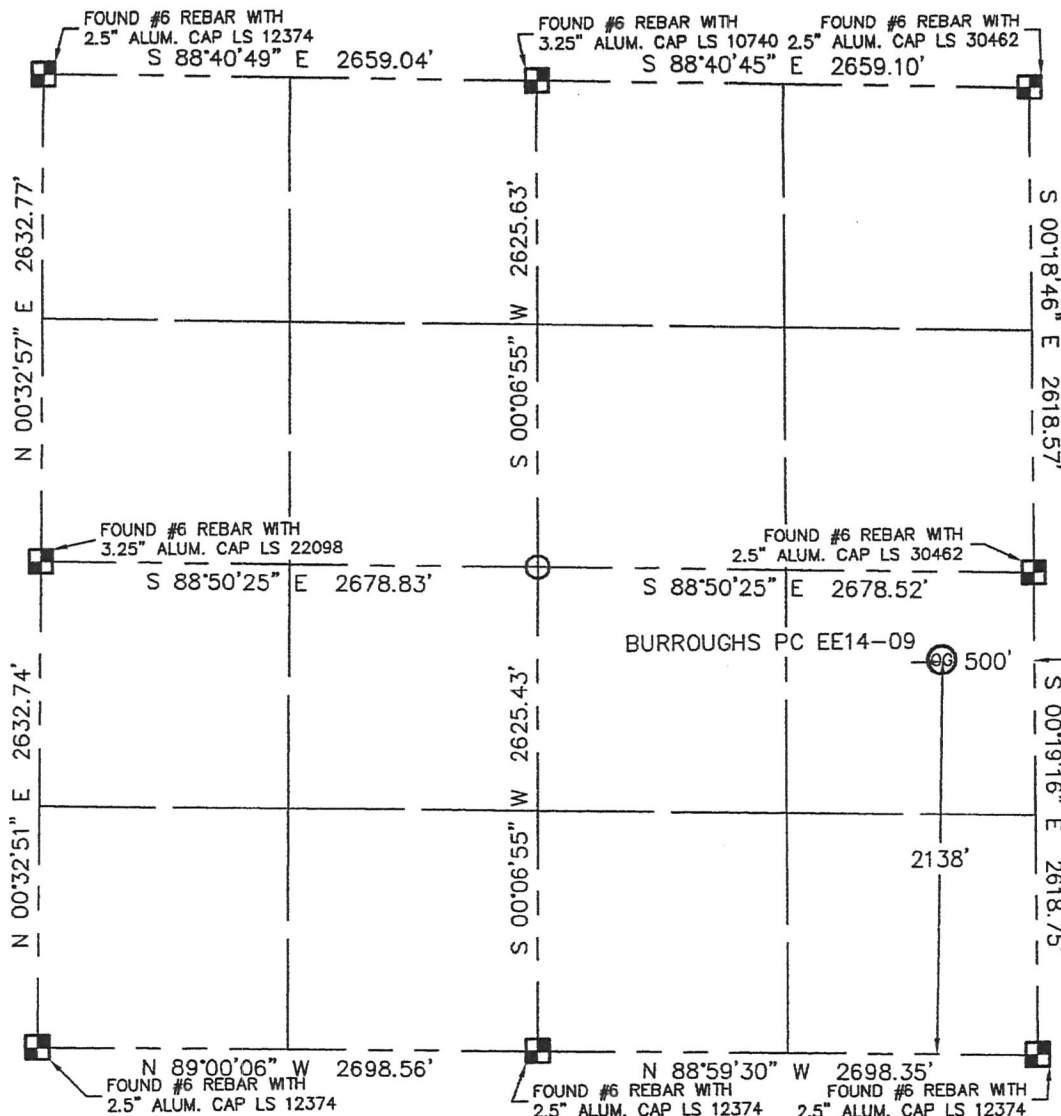


Lat40°, LLC 1635 Foxtrail Drive, Suite 325 Loveland, CO 80538

# WELL LOCATION CERTIFICATE

THIS MAP DOES NOT REPRESENT A BOUNDARY SURVEY

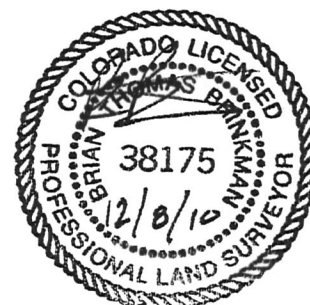
SECTION: 14  
TOWNSHIP: 7N  
RANGE: 65W



In accordance with a request from Nate McCorkell with Noble Energy Inc.,  
Lat40°, LLC has determined the surface location of the BURROUGHS PC EE14-09 to be 2138' from the  
SOUTH line and 500' from the EAST line as measured at right angles from the section lines of Section 14,  
Township 7 North, Range 65 West of the Sixth Principal Meridian, County of Weld, State of Colorado.

I hereby state that this Well Location Certificate was prepared by me, or under my direct  
supervision, that the fieldwork was completed on 12/8/10, for and on behalf of Noble Energy Inc.  
That this is not a Land Survey Plat or an Improvement Survey Plat, and that it is not to be relied  
upon for establishment of fence, building, or other future improvement lines.

SURFACE LOCATION  
LATITUDE: 40.57201°N  
LONGITUDE: 104.62208°W  
PDOP: 2.0  
ELEV: 4931  
1/4.1/4: NE1/4SE1/4  
NEAREST PROPERTY LINE: 171' WEST



## NOTE:

- 1) Bearings shown are Grid Bearings of the Colorado State Plane Coordinate System, North Zone, North American Datum 1983/2007. The lineal dimensions as contained herein are based upon the "U.S. Survey Foot."
- 2) Ground elevations are based on an observed GPS elevation (NAVD 1988 DATUM).
- 3) NEAREST EXISTING WELL: NONE IN SECTION
- 4) IMPROVEMENTS: See LOCATION DRAWING for all visible improvements within 400' of disturbed area.
- 5) SURFACE USE: RANGELAND
- 6) INSTRUMENT OPERATOR: BRIAN BRINKMAN

## NOTE

According to Colorado law, you must commence any legal action based upon any defect in this W.L.C. within three years after you discover such defect. In no event, may any action based upon any defect in this survey be commenced more than ten years after the date of the certificate shown hereon. (13-80-105 C.R.S.)

## LEGEND

- = ALIQUOT MONUMENT AS DESCRIBED  
 = CALCULATED POSITION

Brian T. Brinkman—On behalf of Lat40°, LLC  
Colorado Licensed Professional  
Land Surveyor No. 38175

PROJECT#: 2010166

Lat40°, LLC    1635 Foxtrail Drive, Suite 325    Loveland, CO 80538

# SITE SKETCH

BURROUGHS PC EE14-09

SECTION: 14  
TOWNSHIP: 7N  
RANGE: 65W

