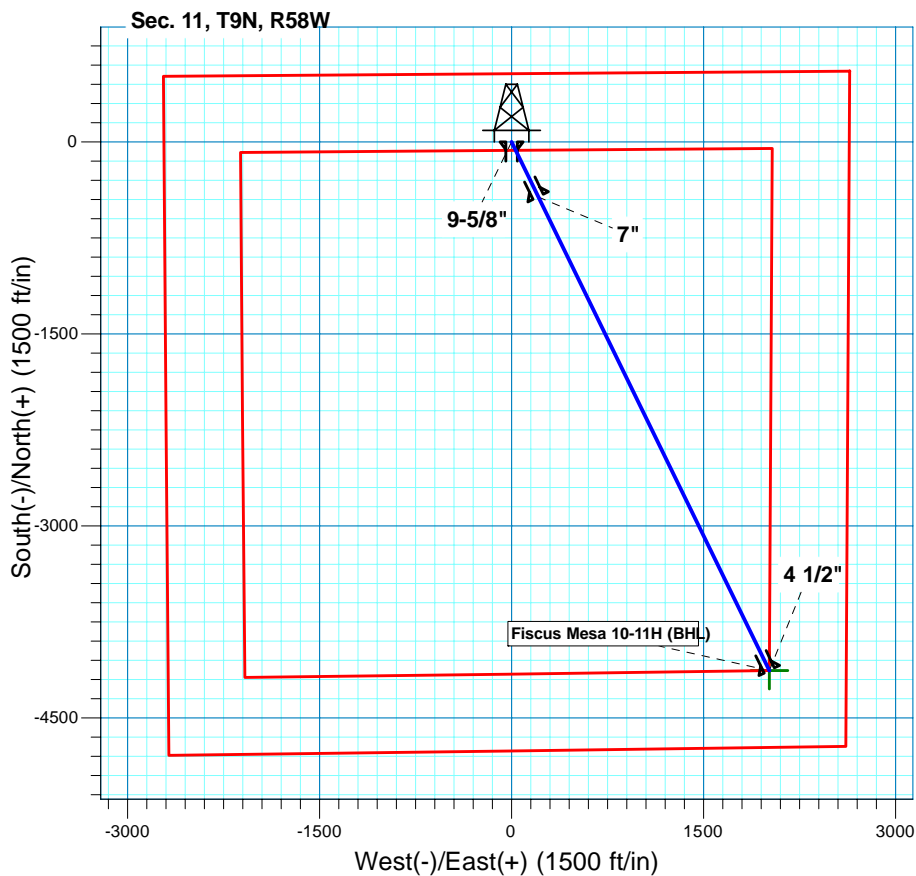
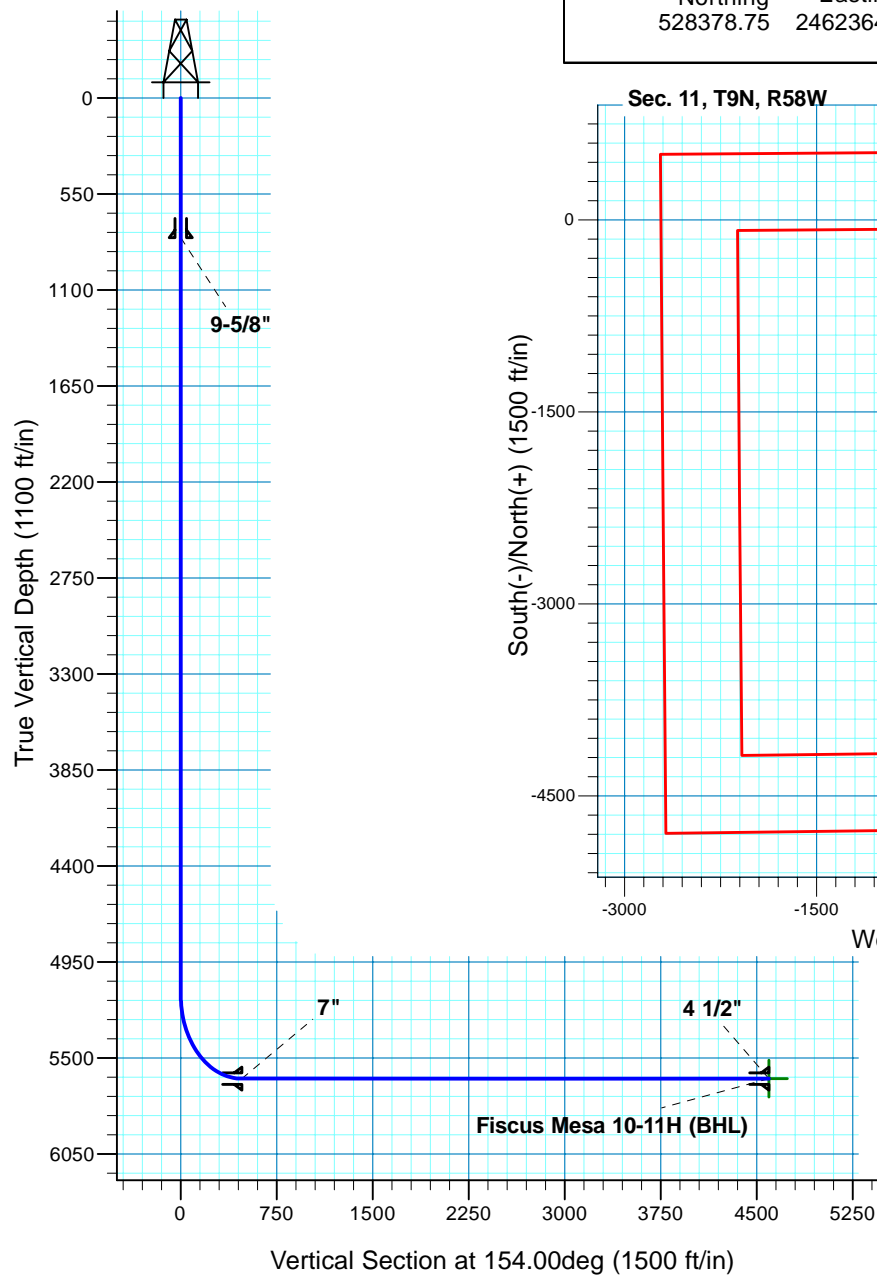


Fiscus Mesa 10-11H
Section 11 T9N R58W
Weld County, CO

Surface Location

NAD 1927 (NADCON CONUS) Colorado North 501
Ground Elevation: 4718.00RIG @ 4740.00ft (TBD)
Northing Easting Latitude Longitude
528378.75 2462364.27 40° 46' 18.710 N 103° 49' 50.362 W



T M
Azimuths to True North
Magnetic North: 8.40°
Magnetic Field
Strength: 53492.6snT
Dip Angle: 67.53°
Date: 12/21/2010
Model: IGRF200510

Project: DJ - Hereford Ranch
Site: Fiscus Mesa 10-11H
Well: Fiscus Mesa 10-11H
Plan: APD Directional Plan

SECTION DETAILS

Sec	MD	Inc	Azi	TVD	+N/-S	+E/-W	DLeg	TFace	VSec	Target
1	0.00	0.00	0.00	0.00	0.00	0.00	0.00	0.00	0.00	
2	5140.53	0.00	0.00	5140.53	0.00	0.00	0.00	0.00	0.00	
3	5890.54	90.00	154.00	5618.00	-429.15	209.29	12.00	154.00	477.47	
4	10007.94	90.00	154.00	5618.00	-4129.94	2014.06	0.00	0.00	4594.87	Fiscus Mesa 10-11H (BHL)

TARGET DETAILS

Name	TVD	+N/-S	+E/-W	Northing	Easting	Latitude	Longitude	Shape Point
Fiscus Mesa 10-11H (BHL)	5618.00	-4129.94	2014.06	524287.46	2464455.71	40° 45' 37.901 N	103° 49' 24.190 W	

Denver Division- Colorado

DJ - Hereford Ranch

Fiscus Mesa 10-11H

Fiscus Mesa 10-11H

Original Wellbore

Plan: APD Directional Plan

Standard Planning Report

21 December, 2010

EOG Resources Inc

Planning Report

Database:	EDM	Local Co-ordinate Reference:	Site Fiscus Mesa 10-11H
Company:	Denver Division- Colorado	TVD Reference:	RIG @ 4740.00ft (TBD)
Project:	DJ - Hereford Ranch	MD Reference:	RIG @ 4740.00ft (TBD)
Site:	Fiscus Mesa 10-11H	North Reference:	True
Well:	Fiscus Mesa 10-11H	Survey Calculation Method:	Minimum Curvature
Wellbore:	Original Wellbore		
Design:	APD Directional Plan		

Project	DJ - Hereford Ranch, Weld County		
Map System:	US State Plane 1927 (Exact solution)	System Datum:	Mean Sea Level
Geo Datum:	NAD 1927 (NADCON CONUS)		
Map Zone:	Colorado North 501		

Site	Fiscus Mesa 10-11H		
Site Position:		Northing:	528,378.75 ft
From:	Lat/Long	Easting:	2,462,364.27 ft
Position Uncertainty:	0.00 ft	Slot Radius:	"
		Latitude:	40° 46' 18.710 N
		Longitude:	103° 49' 50.362 W
		Grid Convergence:	1.08 deg

Well	Fiscus Mesa 10-11H		
Well Position	+N/-S	0.00 ft	Northing: 528,378.75 ft
	+E/-W	0.00 ft	Easting: 2,462,364.27 ft
Position Uncertainty	0.00 ft	Wellhead Elevation:	ft
		Latitude:	40° 46' 18.710 N
		Longitude:	103° 49' 50.362 W
		Ground Level:	4,718.00 ft

Wellbore	Original Wellbore				
Magnetics	Model Name	Sample Date	Declination (deg)	Dip Angle (deg)	Field Strength (nT)
	IGRF200510	12/21/2010	8.40	67.53	53,493

Design	APD Directional Plan			
Audit Notes:				
Version:	Phase:	PROTOTYPE	Tie On Depth:	0.00
Vertical Section:	Depth From (TVD) (ft)	+N/-S (ft)	+E/-W (ft)	Direction (deg)
	0.00	0.00	0.00	154.00

Plan Sections										
Measured Depth (ft)	Inclination (deg)	Azimuth (deg)	Vertical Depth (ft)	+N/-S (ft)	+E/-W (ft)	Dogleg Rate (?/100ft)	Build Rate (?/100ft)	Turn Rate (?/100ft)	TFO (deg)	Target
0.00	0.00	0.00	0.00	0.00	0.00	0.00	0.00	0.00	0.00	
5,140.53	0.00	0.00	5,140.53	0.00	0.00	0.00	0.00	0.00	0.00	
5,890.54	90.00	154.00	5,618.00	-429.15	209.29	12.00	12.00	0.00	154.00	
10,007.94	90.00	154.00	5,618.00	-4,129.94	2,014.06	0.00	0.00	0.00	0.00	Fiscus Mesa 10-11H

EOG Resources Inc

Planning Report

Database:	EDM	Local Co-ordinate Reference:	Site Fiscus Mesa 10-11H
Company:	Denver Division- Colorado	TVD Reference:	RIG @ 4740.00ft (TBD)
Project:	DJ - Hereford Ranch	MD Reference:	RIG @ 4740.00ft (TBD)
Site:	Fiscus Mesa 10-11H	North Reference:	True
Well:	Fiscus Mesa 10-11H	Survey Calculation Method:	Minimum Curvature
Wellbore:	Original Wellbore		
Design:	APD Directional Plan		

Planned Survey

Measured Depth (ft)	Inclination (deg)	Azimuth (deg)	Vertical Depth (ft)	+N/-S (ft)	+E/-W (ft)	Vertical Section (ft)	Dogleg Rate (?/100ft)	Build Rate (?/100ft)	Turn Rate (?/100ft)
0.00	0.00	0.00	0.00	0.00	0.00	0.00	0.00	0.00	0.00
100.00	0.00	0.00	100.00	0.00	0.00	0.00	0.00	0.00	0.00
200.00	0.00	0.00	200.00	0.00	0.00	0.00	0.00	0.00	0.00
300.00	0.00	0.00	300.00	0.00	0.00	0.00	0.00	0.00	0.00
400.00	0.00	0.00	400.00	0.00	0.00	0.00	0.00	0.00	0.00
500.00	0.00	0.00	500.00	0.00	0.00	0.00	0.00	0.00	0.00
600.00	0.00	0.00	600.00	0.00	0.00	0.00	0.00	0.00	0.00
700.00	0.00	0.00	700.00	0.00	0.00	0.00	0.00	0.00	0.00
800.00	0.00	0.00	800.00	0.00	0.00	0.00	0.00	0.00	0.00
9-5/8"									
900.00	0.00	0.00	900.00	0.00	0.00	0.00	0.00	0.00	0.00
1,000.00	0.00	0.00	1,000.00	0.00	0.00	0.00	0.00	0.00	0.00
1,100.00	0.00	0.00	1,100.00	0.00	0.00	0.00	0.00	0.00	0.00
1,200.00	0.00	0.00	1,200.00	0.00	0.00	0.00	0.00	0.00	0.00
1,300.00	0.00	0.00	1,300.00	0.00	0.00	0.00	0.00	0.00	0.00
1,400.00	0.00	0.00	1,400.00	0.00	0.00	0.00	0.00	0.00	0.00
1,500.00	0.00	0.00	1,500.00	0.00	0.00	0.00	0.00	0.00	0.00
1,600.00	0.00	0.00	1,600.00	0.00	0.00	0.00	0.00	0.00	0.00
1,700.00	0.00	0.00	1,700.00	0.00	0.00	0.00	0.00	0.00	0.00
1,800.00	0.00	0.00	1,800.00	0.00	0.00	0.00	0.00	0.00	0.00
1,900.00	0.00	0.00	1,900.00	0.00	0.00	0.00	0.00	0.00	0.00
2,000.00	0.00	0.00	2,000.00	0.00	0.00	0.00	0.00	0.00	0.00
2,100.00	0.00	0.00	2,100.00	0.00	0.00	0.00	0.00	0.00	0.00
2,200.00	0.00	0.00	2,200.00	0.00	0.00	0.00	0.00	0.00	0.00
2,300.00	0.00	0.00	2,300.00	0.00	0.00	0.00	0.00	0.00	0.00
2,400.00	0.00	0.00	2,400.00	0.00	0.00	0.00	0.00	0.00	0.00
2,500.00	0.00	0.00	2,500.00	0.00	0.00	0.00	0.00	0.00	0.00
2,600.00	0.00	0.00	2,600.00	0.00	0.00	0.00	0.00	0.00	0.00
2,700.00	0.00	0.00	2,700.00	0.00	0.00	0.00	0.00	0.00	0.00
2,800.00	0.00	0.00	2,800.00	0.00	0.00	0.00	0.00	0.00	0.00
2,900.00	0.00	0.00	2,900.00	0.00	0.00	0.00	0.00	0.00	0.00
3,000.00	0.00	0.00	3,000.00	0.00	0.00	0.00	0.00	0.00	0.00
3,100.00	0.00	0.00	3,100.00	0.00	0.00	0.00	0.00	0.00	0.00
3,200.00	0.00	0.00	3,200.00	0.00	0.00	0.00	0.00	0.00	0.00
3,300.00	0.00	0.00	3,300.00	0.00	0.00	0.00	0.00	0.00	0.00
3,400.00	0.00	0.00	3,400.00	0.00	0.00	0.00	0.00	0.00	0.00
3,500.00	0.00	0.00	3,500.00	0.00	0.00	0.00	0.00	0.00	0.00
3,600.00	0.00	0.00	3,600.00	0.00	0.00	0.00	0.00	0.00	0.00
3,700.00	0.00	0.00	3,700.00	0.00	0.00	0.00	0.00	0.00	0.00
3,800.00	0.00	0.00	3,800.00	0.00	0.00	0.00	0.00	0.00	0.00
3,900.00	0.00	0.00	3,900.00	0.00	0.00	0.00	0.00	0.00	0.00
4,000.00	0.00	0.00	4,000.00	0.00	0.00	0.00	0.00	0.00	0.00
4,100.00	0.00	0.00	4,100.00	0.00	0.00	0.00	0.00	0.00	0.00
4,200.00	0.00	0.00	4,200.00	0.00	0.00	0.00	0.00	0.00	0.00
4,300.00	0.00	0.00	4,300.00	0.00	0.00	0.00	0.00	0.00	0.00
4,400.00	0.00	0.00	4,400.00	0.00	0.00	0.00	0.00	0.00	0.00
4,500.00	0.00	0.00	4,500.00	0.00	0.00	0.00	0.00	0.00	0.00
4,600.00	0.00	0.00	4,600.00	0.00	0.00	0.00	0.00	0.00	0.00
4,700.00	0.00	0.00	4,700.00	0.00	0.00	0.00	0.00	0.00	0.00
4,800.00	0.00	0.00	4,800.00	0.00	0.00	0.00	0.00	0.00	0.00
4,900.00	0.00	0.00	4,900.00	0.00	0.00	0.00	0.00	0.00	0.00
5,000.00	0.00	0.00	5,000.00	0.00	0.00	0.00	0.00	0.00	0.00
5,100.00	0.00	0.00	5,100.00	0.00	0.00	0.00	0.00	0.00	0.00

EOG Resources Inc

Planning Report

Database:	EDM	Local Co-ordinate Reference:	Site Fiscus Mesa 10-11H
Company:	Denver Division- Colorado	TVD Reference:	RIG @ 4740.00ft (TBD)
Project:	DJ - Hereford Ranch	MD Reference:	RIG @ 4740.00ft (TBD)
Site:	Fiscus Mesa 10-11H	North Reference:	True
Well:	Fiscus Mesa 10-11H	Survey Calculation Method:	Minimum Curvature
Wellbore:	Original Wellbore		
Design:	APD Directional Plan		

Planned Survey

Measured Depth (ft)	Inclination (deg)	Azimuth (deg)	Vertical Depth (ft)	+N/-S (ft)	+E/-W (ft)	Vertical Section (ft)	Dogleg Rate (?/100ft)	Build Rate (?/100ft)	Turn Rate (?/100ft)
5,140.53	0.00	0.00	5,140.53	0.00	0.00	0.00	0.00	0.00	0.00
5,200.00	7.14	154.00	5,199.85	-3.32	1.62	3.70	12.00	12.00	0.00
5,300.00	19.14	154.00	5,297.05	-23.71	11.56	26.38	12.00	12.00	0.00
5,400.00	31.14	154.00	5,387.42	-61.82	30.15	68.78	12.00	12.00	0.00
5,500.00	43.14	154.00	5,466.99	-115.99	56.56	129.04	12.00	12.00	0.00
5,600.00	55.14	154.00	5,532.30	-183.83	89.65	204.53	12.00	12.00	0.00
5,700.00	67.14	154.00	5,580.48	-262.41	127.97	291.95	12.00	12.00	0.00
5,800.00	79.14	154.00	5,609.44	-348.27	169.84	387.47	12.00	12.00	0.00
5,890.54	90.00	154.00	5,618.00	-429.16	209.29	477.47	12.00	12.00	0.00
7"									
5,900.00	90.00	154.00	5,618.00	-437.66	213.43	486.93	0.00	0.00	0.00
6,000.00	90.00	154.00	5,618.00	-527.54	257.27	586.93	0.00	0.00	0.00
6,100.00	90.00	154.00	5,618.00	-617.42	301.10	686.93	0.00	0.00	0.00
6,200.00	90.00	154.00	5,618.00	-707.30	344.93	786.93	0.00	0.00	0.00
6,300.00	90.00	154.00	5,618.00	-797.19	388.77	886.93	0.00	0.00	0.00
6,400.00	90.00	154.00	5,618.00	-887.07	432.60	986.93	0.00	0.00	0.00
6,500.00	90.00	154.00	5,618.00	-976.95	476.43	1,086.93	0.00	0.00	0.00
6,600.00	90.00	154.00	5,618.00	-1,066.83	520.26	1,186.93	0.00	0.00	0.00
6,700.00	90.00	154.00	5,618.00	-1,156.71	564.10	1,286.93	0.00	0.00	0.00
6,800.00	90.00	154.00	5,618.00	-1,246.59	607.93	1,386.93	0.00	0.00	0.00
6,900.00	90.00	154.00	5,618.00	-1,336.48	651.76	1,486.93	0.00	0.00	0.00
7,000.00	90.00	154.00	5,618.00	-1,426.36	695.60	1,586.93	0.00	0.00	0.00
7,100.00	90.00	154.00	5,618.00	-1,516.24	739.43	1,686.93	0.00	0.00	0.00
7,200.00	90.00	154.00	5,618.00	-1,606.12	783.26	1,786.93	0.00	0.00	0.00
7,300.00	90.00	154.00	5,618.00	-1,696.00	827.09	1,886.93	0.00	0.00	0.00
7,400.00	90.00	154.00	5,618.00	-1,785.88	870.93	1,986.93	0.00	0.00	0.00
7,500.00	90.00	154.00	5,618.00	-1,875.76	914.76	2,086.93	0.00	0.00	0.00
7,600.00	90.00	154.00	5,618.00	-1,965.65	958.59	2,186.93	0.00	0.00	0.00
7,700.00	90.00	154.00	5,618.00	-2,055.53	1,002.42	2,286.93	0.00	0.00	0.00
7,800.00	90.00	154.00	5,618.00	-2,145.41	1,046.26	2,386.93	0.00	0.00	0.00
7,900.00	90.00	154.00	5,618.00	-2,235.29	1,090.09	2,486.93	0.00	0.00	0.00
8,000.00	90.00	154.00	5,618.00	-2,325.17	1,133.92	2,586.93	0.00	0.00	0.00
8,100.00	90.00	154.00	5,618.00	-2,415.05	1,177.76	2,686.93	0.00	0.00	0.00
8,200.00	90.00	154.00	5,618.00	-2,504.94	1,221.59	2,786.93	0.00	0.00	0.00
8,300.00	90.00	154.00	5,618.00	-2,594.82	1,265.42	2,886.93	0.00	0.00	0.00
8,400.00	90.00	154.00	5,618.00	-2,684.70	1,309.25	2,986.93	0.00	0.00	0.00
8,500.00	90.00	154.00	5,618.00	-2,774.58	1,353.09	3,086.93	0.00	0.00	0.00
8,600.00	90.00	154.00	5,618.00	-2,864.46	1,396.92	3,186.93	0.00	0.00	0.00
8,700.00	90.00	154.00	5,618.00	-2,954.34	1,440.75	3,286.93	0.00	0.00	0.00
8,800.00	90.00	154.00	5,618.00	-3,044.22	1,484.58	3,386.93	0.00	0.00	0.00
8,900.00	90.00	154.00	5,618.00	-3,134.11	1,528.42	3,486.93	0.00	0.00	0.00
9,000.00	90.00	154.00	5,618.00	-3,223.99	1,572.25	3,586.93	0.00	0.00	0.00
9,100.00	90.00	154.00	5,618.00	-3,313.87	1,616.08	3,686.93	0.00	0.00	0.00
9,200.00	90.00	154.00	5,618.00	-3,403.75	1,659.92	3,786.93	0.00	0.00	0.00
9,300.00	90.00	154.00	5,618.00	-3,493.63	1,703.75	3,886.93	0.00	0.00	0.00
9,400.00	90.00	154.00	5,618.00	-3,583.51	1,747.58	3,986.93	0.00	0.00	0.00
9,500.00	90.00	154.00	5,618.00	-3,673.40	1,791.41	4,086.93	0.00	0.00	0.00
9,600.00	90.00	154.00	5,618.00	-3,763.28	1,835.25	4,186.93	0.00	0.00	0.00
9,700.00	90.00	154.00	5,618.00	-3,853.16	1,879.08	4,286.93	0.00	0.00	0.00
9,800.00	90.00	154.00	5,618.00	-3,943.04	1,922.91	4,386.93	0.00	0.00	0.00
9,900.00	90.00	154.00	5,618.00	-4,032.92	1,966.74	4,486.93	0.00	0.00	0.00
10,000.00	90.00	154.00	5,618.00	-4,122.80	2,010.58	4,586.93	0.00	0.00	0.00
10,007.94	90.00	154.00	5,618.00	-4,129.94	2,014.06	4,594.87	0.00	0.00	0.00

EOG Resources Inc

Planning Report

Database:	EDM	Local Co-ordinate Reference:	Site Fiscus Mesa 10-11H
Company:	Denver Division- Colorado	TVD Reference:	RIG @ 4740.00ft (TBD)
Project:	DJ - Hereford Ranch	MD Reference:	RIG @ 4740.00ft (TBD)
Site:	Fiscus Mesa 10-11H	North Reference:	True
Well:	Fiscus Mesa 10-11H	Survey Calculation Method:	Minimum Curvature
Wellbore:	Original Wellbore		
Design:	APD Directional Plan		

Planned Survey									
Measured Depth (ft)	Inclination (deg)	Azimuth (deg)	Vertical Depth (ft)	+N/-S (ft)	+E/-W (ft)	Vertical Section (ft)	Dogleg Rate (?/100ft)	Build Rate (?/100ft)	Turn Rate (?/100ft)
4 1/2" - Fiscus Mesa 10-11H (BHL)									

Targets									
Target Name									
- hit/miss target	Dip Angle (deg)	Dip Dir. (deg)	TVD (ft)	+N/-S (ft)	+E/-W (ft)	Northing (ft)	Easting (ft)	Latitude	Longitude
- Shape									
Fiscus Mesa 10-11H (0.00	0.00	5,618.00	-4,129.94	2,014.06	524,287.46	2,464,455.71	40° 45' 37.901 N	103° 49' 24.190 W
- plan hits target center									
- Point									

Casing Points					
Measured Depth (ft)	Vertical Depth (ft)	Name	Casing Diameter (")	Hole Diameter (")	
800.00	800.00	9-5/8"	9-5/8	13-1/2	
5,890.54	5,618.00	7"	7	8-3/4	
10,007.94	5,618.00	4 1/2"	4-1/2	6	