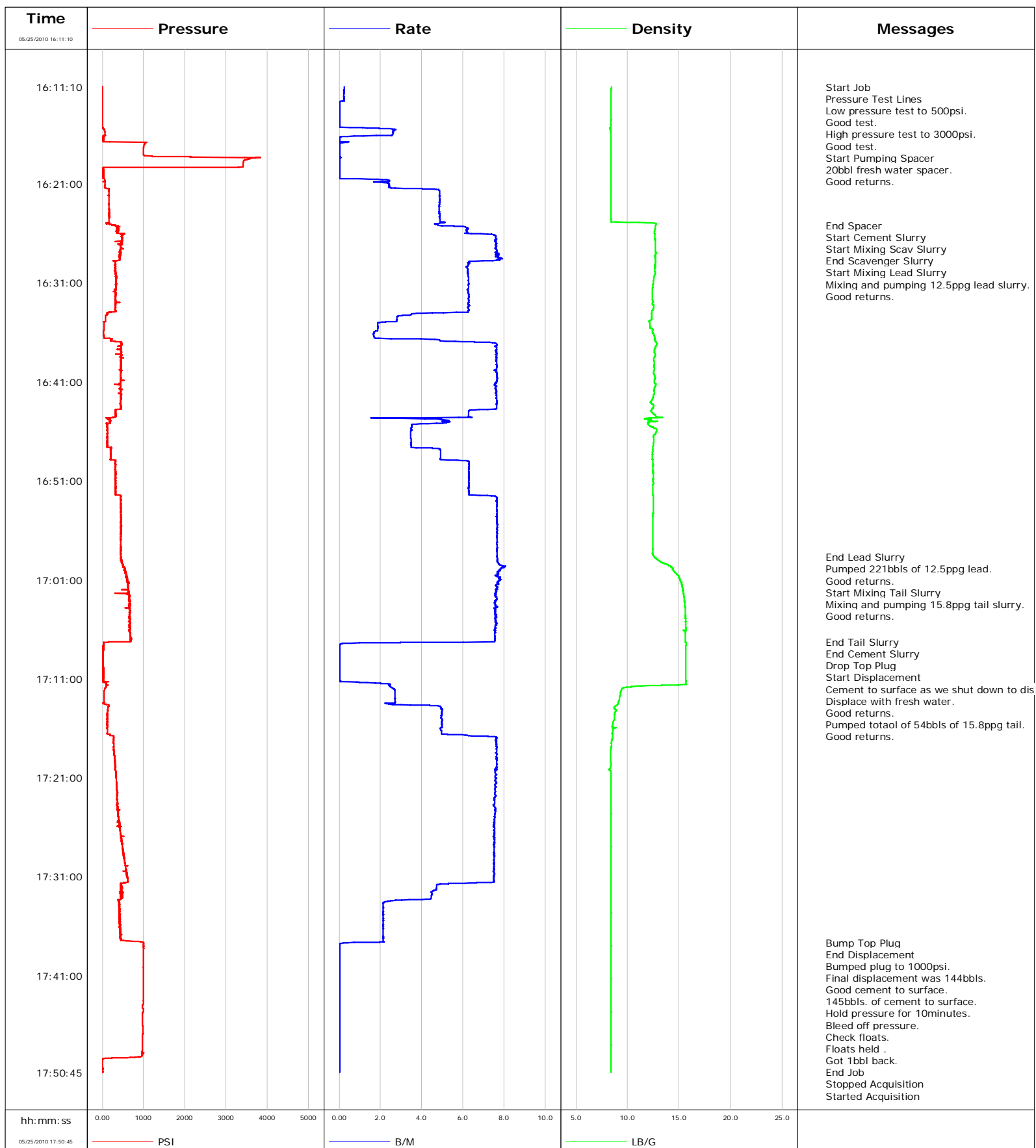


Well OU 16-16H2
Field Orchard Unit.
Engineer
Country United States

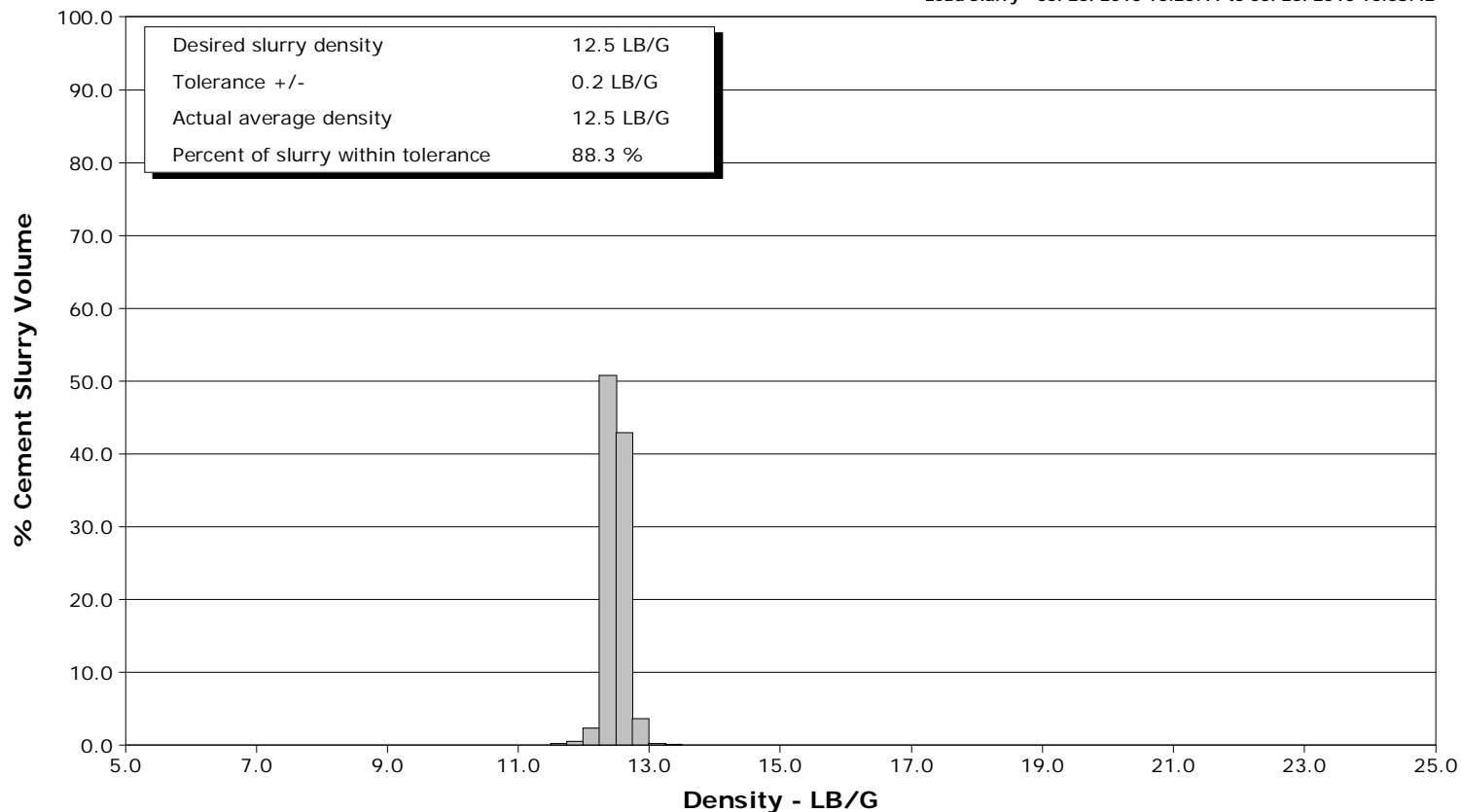
Client EnCana
SIR No. B2K7-00085
Job Type 10 3/4" Surface.
Job Date 05/25/2010



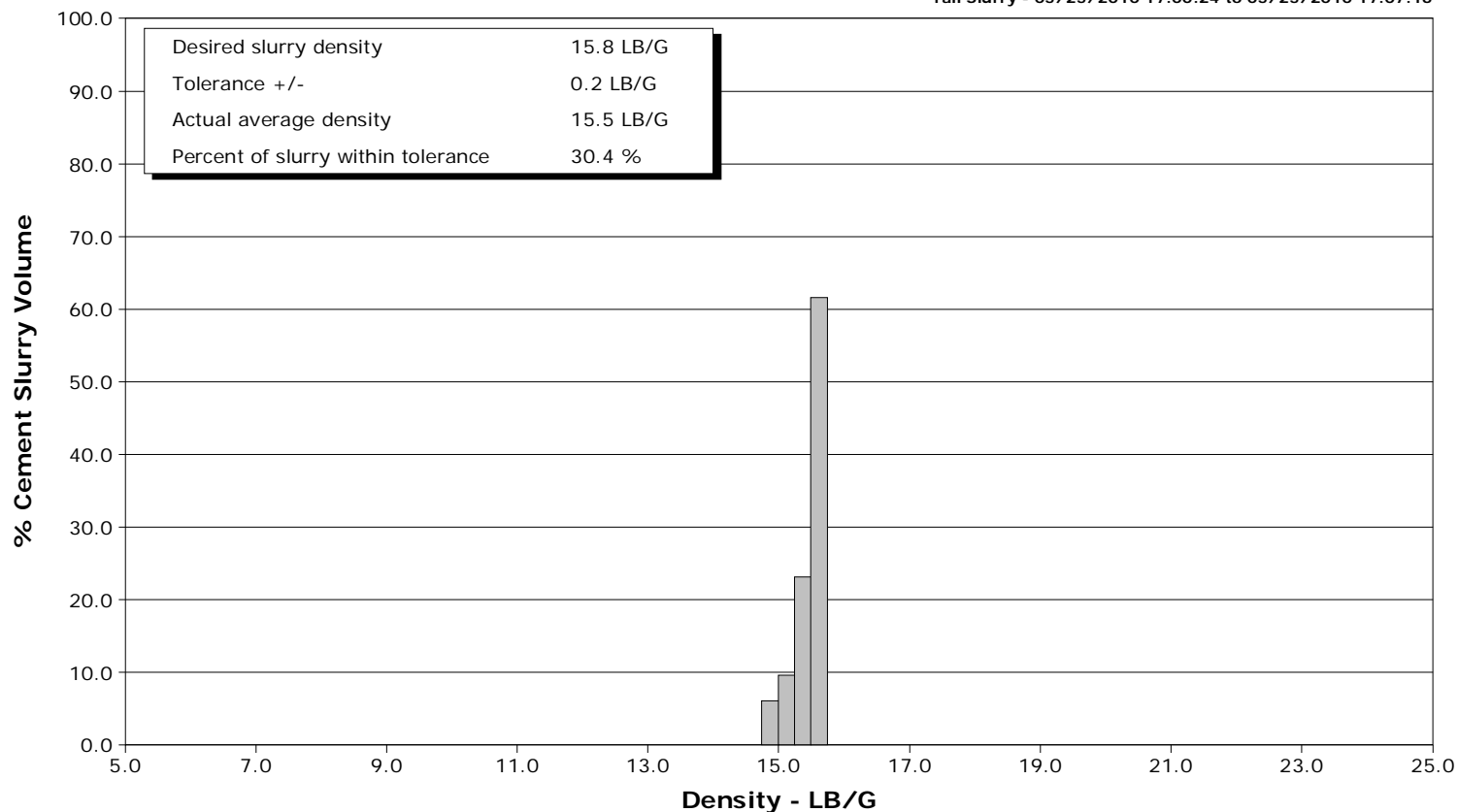
Well OU 16-16H2
Field Orchard Unit.
Engineer
Country United States

Client EnCana
SIR No. B2K7-00085
Job Type 10 3/4" Surface.
Job Date 05/25/2010

Lead Slurry - 05/25/2010 16:25:41 to 05/25/2010 16:58:42



Tail Slurry - 05/25/2010 17:00:24 to 05/25/2010 17:07:16





Well			Field		Job Start		Customer		Job Number	
OU 16-16H2 OU 16-16H2			Orchard Unit.		May/25/2010		EnCana		B2K7-00085	
Date	Time 24-hr clock	Treating Pressure PSI	Flow Rate B/M	Density LB/G	Volume BBL	Message				
05/25/2010	16:12:00	-2	0.2	8.43	0.2					
05/25/2010	16:12:30	-3	0.2	8.43	0.3					
05/25/2010	16:13:00	-3	0.0	8.40	0.4					
05/25/2010	16:13:30	-3	0.0	8.40	0.4					
05/25/2010	16:14:00	-3	0.0	8.40	0.4					
05/25/2010	16:14:30	-3	0.0	8.40	0.4					
05/25/2010	16:15:00	-3	0.0	8.40	0.4					
05/25/2010	16:15:30	43	2.7	8.32	0.7					
05/25/2010	16:16:00	65	2.6	8.40	2.1					
05/25/2010	16:16:30	21	0.0	8.41	2.4					
05/25/2010	16:17:00	1020	0.0	8.40	2.5					
05/25/2010	16:17:30	997	0.0	8.40	2.5					
05/25/2010	16:18:00	994	0.0	8.40	2.5					
05/25/2010	16:18:30	3534	0.0	8.40	2.5					
05/25/2010	16:19:00	3413	0.0	8.40	2.5					
05/25/2010	16:19:30	15	0.0	8.40	2.5					
05/25/2010	16:20:00	15	0.0	8.40	2.5					
05/25/2010	16:20:30	51	1.5	8.40	2.5					
05/25/2010	16:21:00	65	2.4	8.40	3.6					
05/25/2010	16:21:30	154	4.0	8.40	4.9					
05/25/2010	16:22:00	161	4.9	8.40	7.3					
05/25/2010	16:22:30	157	4.9	8.40	9.7					
05/25/2010	16:23:00	158	4.9	8.40	12.2					
05/25/2010	16:23:30	162	4.9	8.40	14.6					
05/25/2010	16:24:00	169	4.9	8.40	17.0					
05/25/2010	16:24:30	166	4.9	8.40	19.5					
05/25/2010	16:25:00	102	4.8	12.77	21.9					
05/25/2010	16:25:11					End Spacer				
05/25/2010	16:25:11	236	4.8	12.71	22.8					
05/25/2010	16:25:12					Start Cement Slurry				
05/25/2010	16:25:12					Start Mixing Scav Slurry				
05/25/2010	16:25:12	280	4.8	12.71	22.9					
05/25/2010	16:25:30	351	6.2	12.68	24.7					
05/25/2010	16:25:40					End Scavenger Slurry				
05/25/2010	16:25:40	344	6.2	12.64	25.7					
05/25/2010	16:25:41					Start Mixing Lead Slurry				
05/25/2010	16:25:41	354	6.2	12.64	25.8					
05/25/2010	16:25:42					Mixing and pumping 12.5ppg lead slurry.				
05/25/2010	16:25:42					Good returns.				
05/25/2010	16:25:42	404	6.2	12.64	25.9					
05/25/2010	16:26:00	351	6.1	12.60	27.8					
05/25/2010	16:26:30	478	7.6	12.66	31.5					
05/25/2010	16:27:00	442	7.6	12.68	35.3					
05/25/2010	16:27:30	440	7.6	12.68	39.1					
05/25/2010	16:28:00	447	7.7	12.76	42.9					
05/25/2010	16:28:30	419	7.8	12.70	46.7					
05/25/2010	16:29:00	301	6.3	12.70	50.2					
05/25/2010	16:29:30	308	6.2	12.67	53.4					
05/25/2010	16:30:00	325	6.2	12.70	56.5					
05/25/2010	16:30:30	327	6.3	12.56	59.6					
05/25/2010	16:31:00	326	6.3	12.49	62.7					
05/25/2010	16:31:30	325	6.3	12.42	65.9					
05/25/2010	16:32:00	319	6.3	12.42	69.0					
05/25/2010	16:32:30	319	6.3	12.41	72.1					

Well OU 16-16H2 OU 16-16H2			Field Orchard Unit.		Job Start May/25/2010		Customer EnCana		Job Number B2K7-00085	
Date	Time 24-hr clock	Treating Pressure PSI	Flow Rate B/M	Density LB/G	Volume BBL	Message				
05/25/2010	16:33:30	308	6.3	12.54	78.4					
05/25/2010	16:34:00	124	5.1	12.36	81.5					
05/25/2010	16:34:30	78	2.8	12.34	83.2					
05/25/2010	16:35:00	38	1.9	12.12	84.6					
05/25/2010	16:35:30	39	1.9	12.15	85.5					
05/25/2010	16:36:00	33	1.7	12.42	86.4					
05/25/2010	16:36:30	36	1.7	12.64	87.2					
05/25/2010	16:37:00	464	7.0	12.78	89.3					
05/25/2010	16:37:30	462	7.6	12.71	93.1					
05/25/2010	16:38:00	464	7.6	12.61	96.9					
05/25/2010	16:38:30	425	7.6	12.59	100.7					
05/25/2010	16:39:00	443	7.6	12.59	104.5					
05/25/2010	16:39:30	437	7.6	12.57	108.4					
05/25/2010	16:40:00	441	7.6	12.54	112.2					
05/25/2010	16:40:30	449	7.6	12.66	116.0					
05/25/2010	16:41:00	441	7.6	12.57	119.8					
05/25/2010	16:41:30	435	7.6	12.67	123.6					
05/25/2010	16:42:00	435	7.6	12.60	127.4					
05/25/2010	16:42:30	455	7.6	12.49	131.2					
05/25/2010	16:43:00	450	7.6	12.24	135.0					
05/25/2010	16:43:30	464	7.6	12.53	138.8					
05/25/2010	16:44:00	325	6.3	12.32	142.4					
05/25/2010	16:44:30	332	6.3	12.74	145.5					
05/25/2010	16:45:00	178	5.1	12.87	147.9					
05/25/2010	16:45:30	123	3.5	12.24	150.0					
05/25/2010	16:46:00	130	3.5	12.83	151.8					
05/25/2010	16:46:30	117	3.5	12.50	153.5					
05/25/2010	16:47:00	118	3.5	12.54	155.2					
05/25/2010	16:47:30	113	3.5	12.47	157.0					
05/25/2010	16:48:00	205	4.9	12.44	159.2					
05/25/2010	16:48:30	202	4.9	12.42	161.6					
05/25/2010	16:49:00	316	6.3	12.46	164.2					
05/25/2010	16:49:30	316	6.3	12.48	167.3					
05/25/2010	16:50:00	318	6.3	12.48	170.5					
05/25/2010	16:50:30	325	6.3	12.48	173.6					
05/25/2010	16:51:00	323	6.3	12.47	176.8					
05/25/2010	16:51:30	322	6.3	12.47	179.9					
05/25/2010	16:52:00	320	6.3	12.46	183.1					
05/25/2010	16:52:30	459	7.4	12.48	186.2					
05/25/2010	16:53:00	447	7.6	12.48	190.1					
05/25/2010	16:53:30	443	7.6	12.50	193.9					
05/25/2010	16:54:00	446	7.6	12.48	197.7					
05/25/2010	16:54:30	446	7.6	12.47	201.5					
05/25/2010	16:55:00	447	7.6	12.47	205.3					
05/25/2010	16:55:30	445	7.7	12.45	209.2					
05/25/2010	16:56:00	452	7.7	12.45	213.0					
05/25/2010	16:56:30	442	7.6	12.45	216.8					
05/25/2010	16:57:00	437	7.6	12.45	220.6					
05/25/2010	16:57:30	440	7.7	12.46	224.5					
05/25/2010	16:58:00	447	7.6	12.46	228.3					
05/25/2010	16:58:30	444	7.7	12.50	232.1					
05/25/2010	16:58:42					End Lead Slurry				
05/25/2010	16:58:42	456	7.6	12.62	233.7					
05/25/2010	16:58:47					Pumped 221bbls of 12.5ppg lead.				

Well			Field	Job Start	Customer	Job Number
OU 16-16H2 OU 16-16H2			Orchard Unit.	May/25/2010	EnCana	B2K7-00085
Date	Time 24-hr clock	Treating Pressure PSI	Flow Rate B/M	Density LB/G	Volume BBL	Message
05/25/2010	16:58:48					Good returns.
05/25/2010	16:58:48	443	7.7	12.73	234.4	
05/25/2010	16:59:00	465	7.7	12.96	236.0	
05/25/2010	16:59:30	491	7.8	13.91	239.8	
05/25/2010	17:00:00	559	7.8	14.38	243.8	
05/25/2010	17:00:24					Start Mixing Tail Slurry
05/25/2010	17:00:24	562	7.7	14.75	246.8	
05/25/2010	17:00:27					Mixing and pumping 15.8ppg tail slurry.
05/25/2010	17:00:27	579	7.7	14.79	247.2	
05/25/2010	17:00:30	586	7.7	14.85	247.6	
05/25/2010	17:00:52					Good returns.
05/25/2010	17:00:52	594	7.7	15.04	250.4	
05/25/2010	17:01:00	604	7.8	15.11	251.5	
05/25/2010	17:01:30	624	7.6	15.28	255.3	
05/25/2010	17:02:00	562	7.6	15.38	259.1	
05/25/2010	17:02:30	622	7.6	15.43	262.9	
05/25/2010	17:03:00	650	7.6	15.50	266.7	
05/25/2010	17:03:30	688	7.6	15.57	270.5	
05/25/2010	17:04:00	671	7.6	15.59	274.3	
05/25/2010	17:04:30	653	7.6	15.59	278.1	
05/25/2010	17:05:00	667	7.6	15.63	281.9	
05/25/2010	17:05:30	668	7.6	15.65	285.7	
05/25/2010	17:06:00	649	7.6	15.70	289.5	
05/25/2010	17:06:30	674	7.5	15.59	293.2	
05/25/2010	17:07:00	675	7.5	15.59	297.0	
05/25/2010	17:07:16					End Tail Slurry
05/25/2010	17:07:16	490	7.4	15.58	299.0	
05/25/2010	17:07:17					End Cement Slurry
05/25/2010	17:07:17	152	7.4	15.58	299.2	
05/25/2010	17:07:18					Drop Top Plug
05/25/2010	17:07:18	152	6.0	15.61	299.3	
05/25/2010	17:07:19					Start Displacement
05/25/2010	17:07:19	58	4.3	15.65	299.3	
05/25/2010	17:07:23					Cement to surface as we shut down to displace.
05/25/2010	17:07:23					Displace with fresh water.
05/25/2010	17:07:23					Good returns.
05/25/2010	17:07:23					Pumped totaol of 54bbbls of 15.8ppg tail.
05/25/2010	17:07:23	29	1.0	15.68	299.5	
05/25/2010	17:07:24					Good returns.
05/25/2010	17:07:24	37	0.6	15.68	299.5	
05/25/2010	17:07:30	31	0.0	15.67	299.5	
05/25/2010	17:08:00	14	0.0	15.64	299.6	
05/25/2010	17:08:30	10	0.0	15.63	299.6	
05/25/2010	17:09:00	9	0.0	15.63	299.6	
05/25/2010	17:09:30	9	0.0	15.63	299.6	
05/25/2010	17:10:00	12	0.0	15.64	299.6	
05/25/2010	17:10:30	15	0.0	15.65	299.6	
05/25/2010	17:11:00	15	0.0	15.65	299.6	
05/25/2010	17:11:30	106	2.4	15.69	299.8	
05/25/2010	17:12:00	57	2.6	9.44	301.1	
05/25/2010	17:12:30	45	2.7	9.31	302.4	
05/25/2010	17:13:00	45	2.7	9.21	303.8	
05/25/2010	17:13:30	41	2.3	9.07	305.1	
05/25/2010	17:14:00	132	4.9	8.70	307.2	

Well OU 16-16H2 OU 16-16H2			Field Orchard Unit.		Job Start May/25/2010	Customer EnCana	Job Number B2K7-00085
Date	Time 24-hr clock	Treating Pressure PSI	Flow Rate B/M	Density LB/G	Volume BBL	Message	
05/25/2010	17:15:00	120	5.0	8.74	312.2		
05/25/2010	17:15:30	122	5.0	8.59	314.7		
05/25/2010	17:16:00	118	4.9	8.71	317.1		
05/25/2010	17:16:30	117	5.0	8.52	319.6		
05/25/2010	17:17:00	277	7.6	8.52	322.8		
05/25/2010	17:17:30	275	7.6	8.43	326.6		
05/25/2010	17:18:00	268	7.6	8.40	330.5		
05/25/2010	17:18:30	287	7.6	8.37	334.3		
05/25/2010	17:19:00	301	7.7	8.36	338.1		
05/25/2010	17:19:30	308	7.6	8.39	341.9		
05/25/2010	17:20:00	310	7.6	8.33	345.7		
05/25/2010	17:20:30	330	7.6	8.41	349.5		
05/25/2010	17:21:00	338	7.6	8.41	353.3		
05/25/2010	17:21:30	344	7.6	8.40	357.1		
05/25/2010	17:22:00	350	7.6	8.41	360.9		
05/25/2010	17:22:30	362	7.5	8.41	364.7		
05/25/2010	17:23:00	352	7.5	8.41	368.4		
05/25/2010	17:23:30	371	7.5	8.41	372.2		
05/25/2010	17:24:00	374	7.6	8.41	376.0		
05/25/2010	17:24:30	381	7.6	8.41	379.7		
05/25/2010	17:25:00	399	7.5	8.41	383.5		
05/25/2010	17:25:30	419	7.5	8.41	387.3		
05/25/2010	17:26:00	424	7.5	8.41	391.0		
05/25/2010	17:26:30	436	7.5	8.41	394.8		
05/25/2010	17:27:00	455	7.5	8.41	398.6		
05/25/2010	17:27:30	477	7.5	8.41	402.3		
05/25/2010	17:28:00	485	7.5	8.41	406.1		
05/25/2010	17:28:30	509	7.5	8.41	409.8		
05/25/2010	17:29:00	524	7.5	8.41	413.6		
05/25/2010	17:29:30	546	7.5	8.41	417.3		
05/25/2010	17:30:00	568	7.5	8.41	421.1		
05/25/2010	17:30:30	576	7.5	8.41	424.8		
05/25/2010	17:31:00	599	7.5	8.41	428.6		
05/25/2010	17:31:30	621	7.5	8.41	432.3		
05/25/2010	17:32:00	479	4.7	8.41	435.1		
05/25/2010	17:32:30	435	4.5	8.41	437.4		
05/25/2010	17:33:00	435	4.5	8.41	439.7		
05/25/2010	17:33:30	390	2.3	8.41	441.6		
05/25/2010	17:34:00	417	2.1	8.41	442.6		
05/25/2010	17:34:30	400	2.1	8.41	443.7		
05/25/2010	17:35:00	427	2.1	8.41	444.8		
05/25/2010	17:35:30	409	2.1	8.41	445.8		
05/25/2010	17:36:00	437	2.1	8.41	446.9		
05/25/2010	17:36:30	443	2.1	8.41	448.0		
05/25/2010	17:37:00	425	2.1	8.41	449.0		
05/25/2010	17:37:30	631	2.1	8.41	450.1		
05/25/2010	17:37:39					Bump Top Plug	
05/25/2010	17:37:39	979	0.7	8.41	450.4		
05/25/2010	17:37:40					End Displacement	
05/25/2010	17:37:40	1000	0.4	8.41	450.4		
05/25/2010	17:37:42					Bumped plug to 1000psi.	
05/25/2010	17:37:42	994	0.2	8.41	450.4		
05/25/2010	17:37:43					Final displacement was 144bbls.	
05/25/2010	17:37:43					Good cement to surface.	

Well			Field		Job Start		Customer		Job Number	
OU 16-16H2 OU 16-16H2			Orchard Unit.		May/25/2010		EnCana		B2K7-00085	
Date	Time 24-hr clock	Treating Pressure PSI	Flow Rate B/M	Density LB/G	Volume BBL	Message				
05/25/2010	17:37:43					Hold pressure for 10minutes.				
05/25/2010	17:37:43	998	0.1	8.41	450.4					
05/25/2010	17:37:44					Bleed off pressure.				
05/25/2010	17:37:44					Check floats.				
05/25/2010	17:37:44	1007	0.1	8.41	450.4					
05/25/2010	17:37:45					Floats held .				
05/25/2010	17:37:45					Got 1bbl back.				
05/25/2010	17:37:45	1011	0.1	8.41	450.4					
05/25/2010	17:38:00	999	0.0	8.41	450.4					
05/25/2010	17:38:30	999	0.0	8.41	450.4					
05/25/2010	17:39:00	998	0.0	8.41	450.4					
05/25/2010	17:39:30	997	0.0	8.41	450.4					
05/25/2010	17:40:00	997	0.0	8.41	450.4					
05/25/2010	17:40:30	995	0.0	8.41	450.4					
05/25/2010	17:41:00	995	0.0	8.41	450.4					
05/25/2010	17:41:30	995	0.0	8.41	450.4					
05/25/2010	17:42:00	995	0.0	8.41	450.4					
05/25/2010	17:42:30	994	0.0	8.41	450.4					
05/25/2010	17:43:00	993	0.0	8.41	450.4					
05/25/2010	17:43:30	993	0.0	8.41	450.4					
05/25/2010	17:44:00	968	0.0	8.41	450.4					
05/25/2010	17:44:30	994	0.0	8.41	450.4					
05/25/2010	17:45:00	973	0.0	8.41	450.4					
05/25/2010	17:45:30	973	0.0	8.42	450.4					
05/25/2010	17:46:00	974	0.0	8.41	450.4					
05/25/2010	17:46:30	978	0.0	8.42	450.4					
05/25/2010	17:47:00	975	0.0	8.42	450.4					
05/25/2010	17:47:30	971	0.0	8.42	450.4					
05/25/2010	17:48:00	971	0.0	8.42	450.4					
05/25/2010	17:48:30	967	0.0	8.42	450.4					
05/25/2010	17:49:00	963	0.0	8.42	450.4					
05/25/2010	17:49:30	-2	0.0	8.42	450.4					
05/25/2010	17:50:00	-1	0.0	8.42	450.4					
05/25/2010	17:50:26					End Job				
05/25/2010	17:50:26	-0	0.0	8.41	450.4					
05/25/2010	17:50:30	-1	0.0	8.41	450.4					
05/25/2010	17:50:47					Stopped Acquisition				
05/25/2010	17:58:14					Started Acquisition				

Well OU 16-16H2 OU 16-16H2	Field Orchard Unit.	Job Start May/25/2010	Customer EnCana	Job Number B2K7-00085
-------------------------------	------------------------	--------------------------	--------------------	--------------------------

Post Job Summary

Average Pump Rates,					Volume of Fluid Injected, bbl			
Slurry	N2	Mud	Maximum Rate		Total Slurry 275.0	Mud	Spacer 20.0	N2
Treating Pressure Summary, psi					Breakdown Fluid			
Maximum 3000	Final 1000	Average 450	Bump Plug to 1000	Breakdown	Type	Volume	Density	
Avg. N2 Percent	Designed Slurry Volume 275.0 bbl		Displacement 145.0 bbl		Mix Water Temp 55 degF	Cement Circulated to Surface? <input checked="" type="checkbox"/>	Volume 145.0 bbl	
Customer or Authorized Representative Tony Ketterling			Schlumberger Supervisor Jeff Patterson			Washed Thru Perfs <input type="checkbox"/>	To	
						Circulation Lost <input type="checkbox"/>	Job Completed <input checked="" type="checkbox"/>	
						-		-



Service Order for i-District Job 356295

Customer Name: ENCANA USA - PARACHUTE FIELD OFC		Person Taking Call: Bolding, Russell		Location: Grand Junction, CO WS		Order Date:		Job Number: 356295	
Service Order Number: B2K7-00085		Service Line: Cementing		Supervisor:		Legal Location:			
Well Name and Number: ORCHARD UNIT, 16-16H2		Pad/Platform:		Field: GRAND VALL		County: 077		State/Prov: CO	
Well Master Number: 0631126992		API/UWI: 05077100710000		Rig Name: NABORS M11		Well Age:		Sales Engineer: Hudson, Matthew	
Job Type: Cementing – 10 3/4" Surface Casing		Time Well Ready:		Deviation: 0 deg		Hole Size: 12.25 in		Well MD: 1500 ft	
Well TVD: 16500 ft		BHP:		BHST: 95 °F		BHCT: 84 °F		Treat Down: None	
Packer Type:		Packer Depth:		Well Head Connection: 10 3/4"		HHP on Location: 450 hhp		Max Allowed Pressure: 1500 psi	
Max Allowed Ann Pressure: 1500 psi				Job Stage Number:		FTL Ticket/Quote Number : B2K7-00085			
Expected on Location:		Ready to Pump:		Job Start Date: 5/21/2010 12:44 PM		Job End Date: 5/22/2010 12:44 PM			
Leave for Job: 5/21/2010 12:44:00 PM				Arrive from Job: 5/22/2010 12:44:00 PM					
Casing/Tubing						Service Instructions: Cement 1500 ft 10 3/4" Casing with: 20 bbls water 588 sks 12.5 ppg Lead (TOL 0 ft) 80% excess 258 sks 15.8 ppg Tail (TOT 900 ft) 0% excess Displace with water			
String Type	Depth	Size	Weight	Grade	Thread				
Casing	40 ft	20 in	94 lb/ft						
Casing	1400 ft	10.75 in	40.5 lb/ft						
Perforations									
Top	Bottom	SPF	No of Shots	Formation Name					
Total Interval: 0			Diameter:						
Coiled Tubing									
Size	Thickness	Length	String ID	Reel ID					
Client Contact									
Name	Voice	Fax	Email	Title	Company	Notes			
TONY KETTERLING									
Notes:									
Directions:									