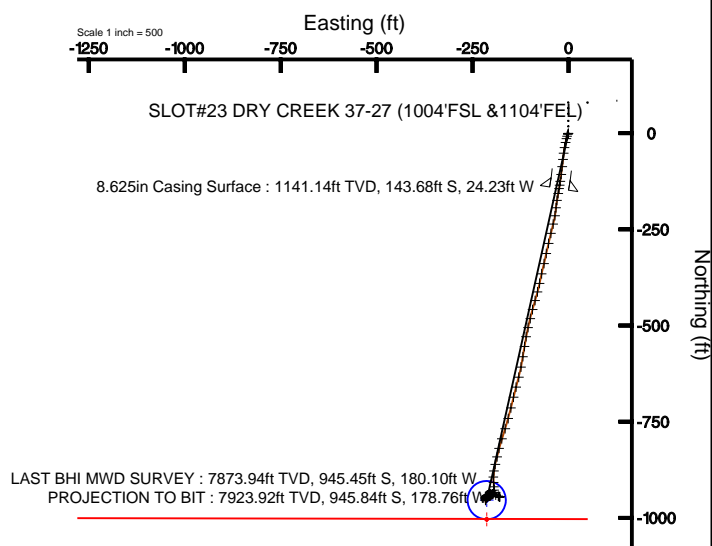
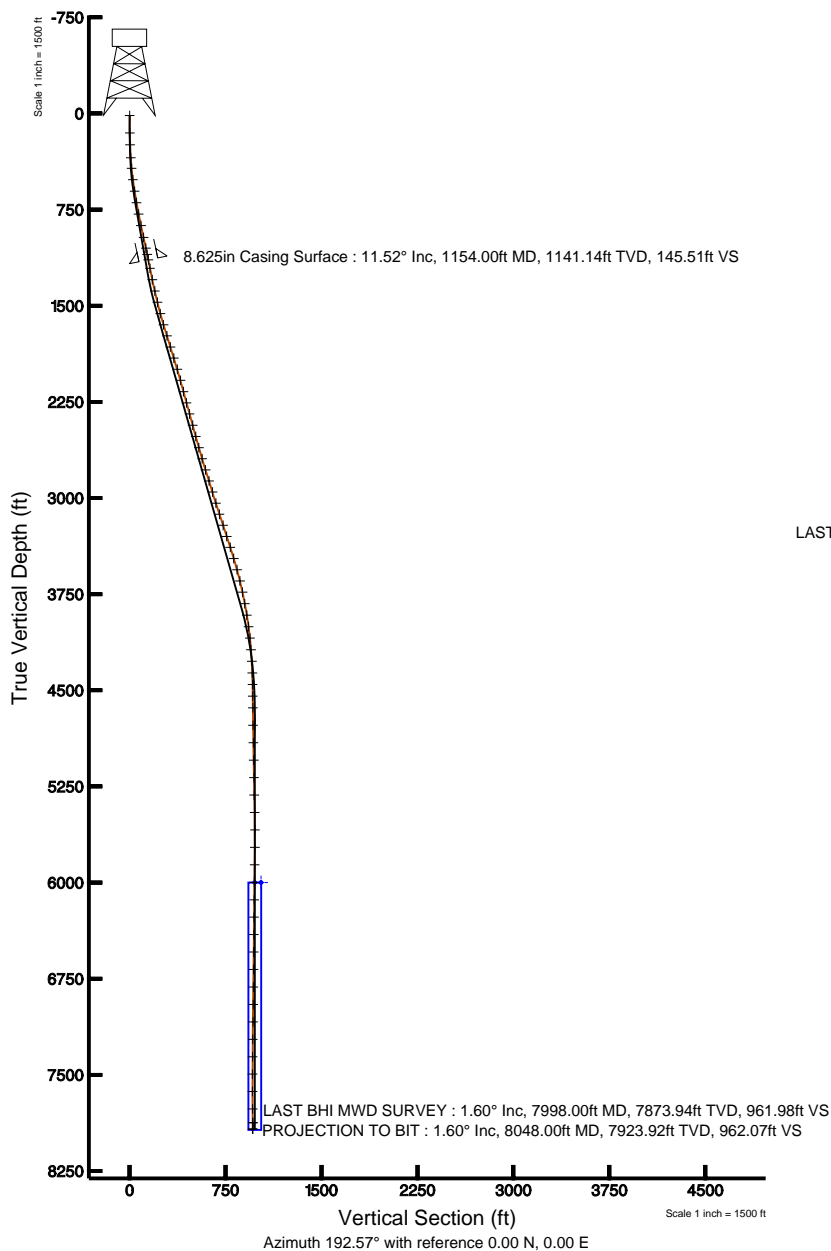


KERR MCGEE OIL & GAS ONSHORE LP

Location: COLORADO Slot: SLOT#23 DRY CREEK 37-27 (1004'FSL & 1104'FEL)
 Field: WELD COUNTY (KERR MCGEE) Well: DRY CREEK 37-27
 Facility: SEC.27-T1N-R67W Wellbore: DRY CREEK 37-27 PWB



Plot reference wellpath is DRY CREEK 37-27 (REV-A-0) PWB	
True vertical depths are referenced to XTREME 12 (RKB)	Grid System: NAD83 / Lambert Colorado State Planes, Northern Zone (501), US feet
Measured depths are referenced to XTREME 12 (RKB)	North Reference: True north
XTREME 12 (RKB) to Mean Sea Level: 6059 feet	Scale: True distance
Mean Sea Level to Mud line (Facility: SEC.27-T1N-R67W): 0 feet	Depths are in feet
Coordinates are in feet referenced to Slot	Created by: cookdarrin on 12/29/2010



N
TRUE
W E

BGGM (1945.0 to 2012.0) Dip: 66.76° Field: 53002 nT
 Magnetic North is 8.94 degrees East of True North (at 11/18/2010)

To correct azimuth from Magnetic to True add 8.94 degrees
 For example: if the Magnetic North Azimuth = 90 degs, then the Grid North Azimuth = 90 + 8.94 = 98.94



Actual Wellpath Report

DRY CREEK 37-27 AWP

Page 1 of 5



INTEQ

REFERENCE WELLPATH IDENTIFICATION

Operator	KERR MCGEE OIL & GAS ONSHORE LP	Slot	SLOT#23 DRY CREEK 37-27 (1004'FSL &1104'FEL)
Area	COLORADO	Well	DRY CREEK 37-27
Field	WELD COUNTY (KERR MCGEE)	Wellbore	DRY CREEK 37-27 AWB
Facility	SEC.27-T1N-R67W		

REPORT SETUP INFORMATION

Projection System	NAD83 / Lambert Colorado State Planes, Northern Zone (501), US feet	Software System	WellArchitect® 2.0
North Reference	True	User	Cookdanm
Scale	0.999965	Report Generated	12/29/2010 at 3:01:00 PM
Convergence at slot	0.41° East	Database/Source file	Denver Server/DRY_CREEK_37-27_AWB.xml

WELLPATH LOCATION

	Local coordinates		Grid coordinates		Geographic coordinates	
	North[ft]	East[ft]	Easting[USft]	Northing[USft]	Latitude	Longitude
Slot Location	-3103.56	3002.58	3176122.02	1249886.18	40°01'03.396"N	104°52'16.212"W
Facility Reference Pt			3173097.99	1252968.61	40°01'34.068"N	104°52'54.804"W
Field Reference Pt			3197771.84	1268891.29	40°04'09.600"N	104°47'36.000"W

WELLPATH DATUM

Calculation method	Minimum curvature	XTREME 12 (RKB) to Facility Vertical Datum	5059.00ft
Horizontal Reference Pt	Slot	XTREME 12 (RKB) to Mean Sea Level	5059.00ft
Vertical Reference Pt	XTREME 12 (RKB)	Facility Vertical Datum to Mud Line (Facility)	0.00ft
MD Reference Pt	XTREME 12 (RKB)	Section Origin	N 0.00, E 0.00 ft
Field Vertical Reference	Mean Sea Level	Section Azimuth	192.57°



Actual Wellpath Report

DRY CREEK 37-27 AWP

Page 2 of 5



INTEQ

REFERENCE WELLPATH IDENTIFICATION

Operator	KERR MCGEE OIL & GAS ONSHORE LP	Slot	SLOT#23 DRY CREEK 37-27 (1004'FSL &1104'FEL)
Area	COLORADO	Well	DRY CREEK 37-27
Field	WELD COUNTY (KERR MCGEE)	Wellbore	DRY CREEK 37-27 AWB
Facility	SEC.27-T1N-R67W		

WELLPATH DATA (79 stations) † = interpolated/extrapolated station

MD [ft]	Inclination [°]	Azimuth [°]	TVD [ft]	Vert Sect [ft]	North [ft]	East [ft]	DLS [°/100ft]	Comments
0.00†	0.000	194.200	0.00	0.00	0.00	0.00	0.00	
15.00	0.000	194.200	15.00	0.00	0.00	0.00	0.00	
151.00	0.500	194.200	151.00	0.59	-0.58	-0.15	0.37	
243.00	2.300	213.600	242.97	2.72	-2.50	-1.27	2.00	
345.00	3.900	197.700	344.82	8.08	-7.51	-3.45	1.77	
427.00	5.300	192.800	426.55	14.65	-13.86	-5.14	1.77	
517.00	7.700	191.800	515.97	24.84	-23.82	-7.29	2.67	
608.00	9.300	191.400	605.96	38.28	-37.00	-9.99	1.76	
698.00	9.600	186.800	694.74	53.02	-51.58	-12.32	0.90	
789.00	11.200	185.400	784.25	69.34	-67.91	-14.05	1.78	
880.00	12.500	187.500	873.30	87.92	-86.47	-16.17	1.50	
975.00	12.500	185.800	966.05	108.37	-106.89	-18.55	0.39	
1061.00	12.000	190.400	1050.10	126.54	-124.95	-21.10	1.27	
1110.00	11.800	188.900	1098.04	136.64	-134.91	-22.80	0.75	
1221.00	11.100	190.700	1206.83	158.64	-156.62	-26.54	0.71	
1312.00	11.700	190.000	1296.04	176.61	-174.31	-29.77	0.68	
1402.00	13.300	184.400	1383.91	195.98	-193.62	-32.15	2.23	
1493.00	13.500	190.400	1472.43	216.95	-214.51	-34.87	1.54	
1584.00	14.700	194.900	1560.69	239.11	-236.12	-39.75	1.79	
1675.00	17.100	192.500	1648.20	264.03	-260.34	-45.62	2.73	
1765.00	17.500	193.200	1734.13	290.79	-286.43	-51.57	0.50	
1856.00	17.100	192.800	1821.02	317.85	-312.80	-57.66	0.46	
1947.00	17.000	192.500	1908.02	344.53	-338.83	-63.50	0.15	
2038.00	18.000	193.800	1994.80	371.89	-365.48	-69.74	1.18	
2128.00	15.000	191.100	2081.09	397.44	-390.41	-75.30	3.44	
2219.00	13.900	195.300	2169.21	420.14	-412.52	-80.45	1.67	
2310.00	16.100	196.000	2257.11	443.65	-435.19	-86.81	2.43	
2400.00	15.200	194.900	2343.77	467.90	-458.59	-93.29	1.05	
2491.00	15.600	193.900	2431.50	492.05	-481.99	-99.29	0.53	
2582.00	15.000	193.900	2519.28	516.06	-505.30	-105.06	0.66	
2673.00	16.300	191.100	2606.90	540.60	-529.27	-110.35	1.65	
2763.00	17.100	187.200	2693.11	566.40	-554.79	-114.44	1.53	
2854.00	17.300	190.700	2780.04	593.24	-581.36	-118.63	1.16	
2945.00	17.600	190.000	2866.85	620.51	-608.20	-123.53	0.40	
3035.00	17.500	194.200	2952.67	647.63	-634.72	-129.21	1.41	
3126.00	16.500	196.700	3039.69	674.20	-660.37	-136.28	1.36	
3217.00	18.100	192.100	3126.57	701.22	-686.57	-142.96	2.31	
3308.00	18.700	195.600	3212.92	729.93	-714.44	-149.85	1.38	
3399.00	17.900	193.200	3299.32	758.48	-742.11	-156.96	1.21	
3489.00	17.900	198.800	3384.97	786.06	-768.67	-164.58	1.91	
3580.00	17.400	198.400	3471.69	813.50	-794.82	-173.38	0.57	
3671.00	15.600	193.500	3558.94	839.27	-819.63	-180.53	2.50	
3762.00	13.600	193.200	3647.00	862.21	-841.95	-185.83	2.20	
3852.00	12.000	193.900	3734.76	882.14	-861.33	-190.50	1.79	
3943.00	10.300	189.300	3824.04	899.73	-878.54	-194.08	2.11	



Actual Wellpath Report

DRY CREEK 37-27 AWP

Page 3 of 5



REFERENCE WELLPATH IDENTIFICATION			
Operator	KERR MCGEE OIL & GAS ONSHORE LP	Slot	SLOT#23 DRY CREEK 37-27 (1004'FSL &1104'FEL)
Area	COLORADO	Well	DRY CREEK 37-27
Field	WELD COUNTY (KERR MCGEE)	Wellbore	DRY CREEK 37-27 AWB
Facility	SEC.27-T1N-R67W		

WELLPATH DATA (79 stations)								
MD [ft]	Inclination [°]	Azimuth [°]	TVD [ft]	Vert Sect [ft]	North [ft]	East [ft]	DLS [°/100ft]	Comments
4034.00	9.600	181.200	3913.68	915.29	-894.16	-195.56	1.72	
4125.00	8.400	173.500	4003.56	929.01	-908.35	-194.96	1.87	
4215.00	6.400	176.600	4092.80	940.05	-919.89	-193.92	2.27	
4306.00	4.500	180.500	4183.39	948.41	-928.53	-193.65	2.13	
4397.00	3.600	197.700	4274.16	954.75	-934.82	-194.55	1.65	
4488.00	1.600	233.900	4365.07	958.55	-938.29	-196.45	2.74	
4578.00	1.500	235.400	4455.04	960.36	-939.70	-198.43	0.12	
4669.00	1.900	256.800	4546.00	961.89	-940.72	-200.88	0.82	
4760.00	0.600	220.600	4636.98	962.96	-941.42	-202.66	1.60	
4896.00	1.100	234.600	4772.96	964.56	-942.72	-204.19	0.40	
5032.00	1.900	242.000	4908.91	967.00	-944.54	-207.24	0.60	
5169.00	1.600	236.400	5045.85	969.86	-946.66	-210.84	0.25	
5305.00	0.500	229.400	5181.82	971.70	-948.10	-212.87	0.81	
5441.00	1.100	199.800	5317.81	973.47	-949.71	-213.77	0.52	
5577.00	1.700	202.100	5453.77	976.76	-952.81	-214.97	0.44	
5713.00	0.400	215.700	5589.74	979.18	-955.06	-216.00	0.97	
5849.00	0.900	17.700	5725.74	978.55	-954.43	-215.96	0.95	
5985.00	0.900	342.200	5861.72	976.57	-952.40	-215.96	0.40	
6122.00	1.000	1.200	5998.70	974.47	-950.18	-216.26	0.24	
6258.00	0.300	355.600	6134.70	972.96	-948.64	-216.26	0.52	
6394.00	0.500	29.700	6270.69	972.06	-947.77	-216.00	0.22	
6530.00	0.600	39.900	6406.69	970.86	-946.70	-215.25	0.10	
6666.00	0.600	2.600	6542.68	969.52	-945.45	-214.76	0.28	
6802.00	0.600	32.100	6678.67	968.15	-944.13	-214.35	0.22	
6939.00	1.000	59.600	6815.66	966.66	-942.92	-212.93	0.40	
7075.00	0.700	37.100	6951.64	965.10	-941.66	-211.41	0.33	
7211.00	1.200	76.400	7087.63	963.71	-940.66	-209.52	0.58	
7347.00	1.600	68.700	7223.59	962.02	-939.63	-206.37	0.32	
7483.00	1.700	87.000	7359.53	960.42	-938.84	-202.59	0.39	
7619.00	2.900	98.900	7495.42	959.66	-939.27	-197.17	0.95	
7755.00	4.000	106.700	7631.17	959.78	-941.16	-189.23	0.88	
7891.00	1.900	128.500	7766.99	961.11	-943.93	-182.92	1.72	
7998.00	1.600	106.300	7873.94	961.98	-945.45	-180.10	0.69	LAST BHI MWD SURVEY
8048.00	1.600	106.300	7923.92	962.07	-945.84	-178.76	0.00	PROJECTION TO BIT



Actual Wellpath Report

DRY CREEK 37-27 AWP

Page 4 of 5



INTEQ

REFERENCE WELLPATH IDENTIFICATION			
Operator	KERR MCGEE OIL & GAS ONSHORE LP	Slot	SLOT#23 DRY CREEK 37-27 (1004'FSL &1104'FEL)
Area	COLORADO	Well	DRY CREEK 37-27
Field	WELD COUNTY (KERR MCGEE)	Wellbore	DRY CREEK 37-27 AWB
Facility	SEC.27-T1N-R67W		

HOLE & CASING SECTIONS Ref Wellbore: DRY CREEK 37-27 AWB Ref Wellpath: DRY CREEK 37-27 AWP									
String/Diameter	Start MD [ft]	End MD [ft]	Interval [ft]	Start TVD [ft]	End TVD [ft]	Start N/S [ft]	Start E/W [ft]	End N/S [ft]	End E/W [ft]
12.25in Open Hole	15.00	1165.00	1150.00	15.00	1151.92	0.00	0.00	-145.84	-24.59
8.625in Casing Surface	15.00	1154.00	1139.00	15.00	1141.14	0.00	0.00	-143.68	-24.23
7.875in Open Hole	1154.00	8048.00	6894.00	1141.14	7923.92	-143.68	-24.23	-945.84	-178.76

TARGETS									
Name	MD [ft]	TVD [ft]	North [ft]	East [ft]	Grid East [srv ft]	Grid North [srv ft]	Latitude	Longitude	Shape
DRY CREEK 37-27 GEO TARGET 50' RADIUS (50'FSL & 1320'FEL, REV-1)		6000.00	-954.43	-212.88	3175915.92	1248930.29	40°00'53.964"N	104°52'18.948"W	circle
DRY CREEK 37-27 HARDLINE 50'S OF GEO TARGET		6000.00	-1004.43	-212.88	3175916.27	1248880.30	40°00'53.470"N	104°52'18.948"W	point

WELLPATH COMPOSITION Ref Wellbore: DRY CREEK 37-27 AWB Ref Wellpath: DRY CREEK 37-27 AWP				
Start MD [ft]	End MD [ft]	Positional Uncertainty Model	Log Name/Comment	Wellbore
15.00	1110.00	NaviTrak (Standard)	BHI MWD SURVEYS 12.25 HOLE <151-1110>	DRY CREEK 37-27 AWB
1110.00	7998.00	NaviTrak (Standard)	BHI MWD SURVEYS 7.875 HOLE <1221-7998>	DRY CREEK 37-27 AWB
7998.00	8048.00	Blind Drilling (std)	Projection to bit	DRY CREEK 37-27 AWB



Actual Wellpath Report

DRY CREEK 37-27 AWP

Page 5 of 5



INTEQ

REFERENCE WELLPATH IDENTIFICATION

Operator	KERR MCGEE OIL & GAS ONSHORE LP	Slot	SLOT#23 DRY CREEK 37-27 (1004'FSL &1104'FEL)
Area	COLORADO	Well	DRY CREEK 37-27
Field	WELD COUNTY (KERR MCGEE)	Wellbore	DRY CREEK 37-27 AWB
Facility	SEC.27-T1N-R67W		

WELLPATH COMMENTS

MD [ft]	Inclination [°]	Azimuth [°]	TVD [ft]	Comment
7998.00	1.600	106.300	7873.94	LAST BHI MWD SURVEY
8048.00	1.600	106.300	7923.92	PROJECTION TO BIT