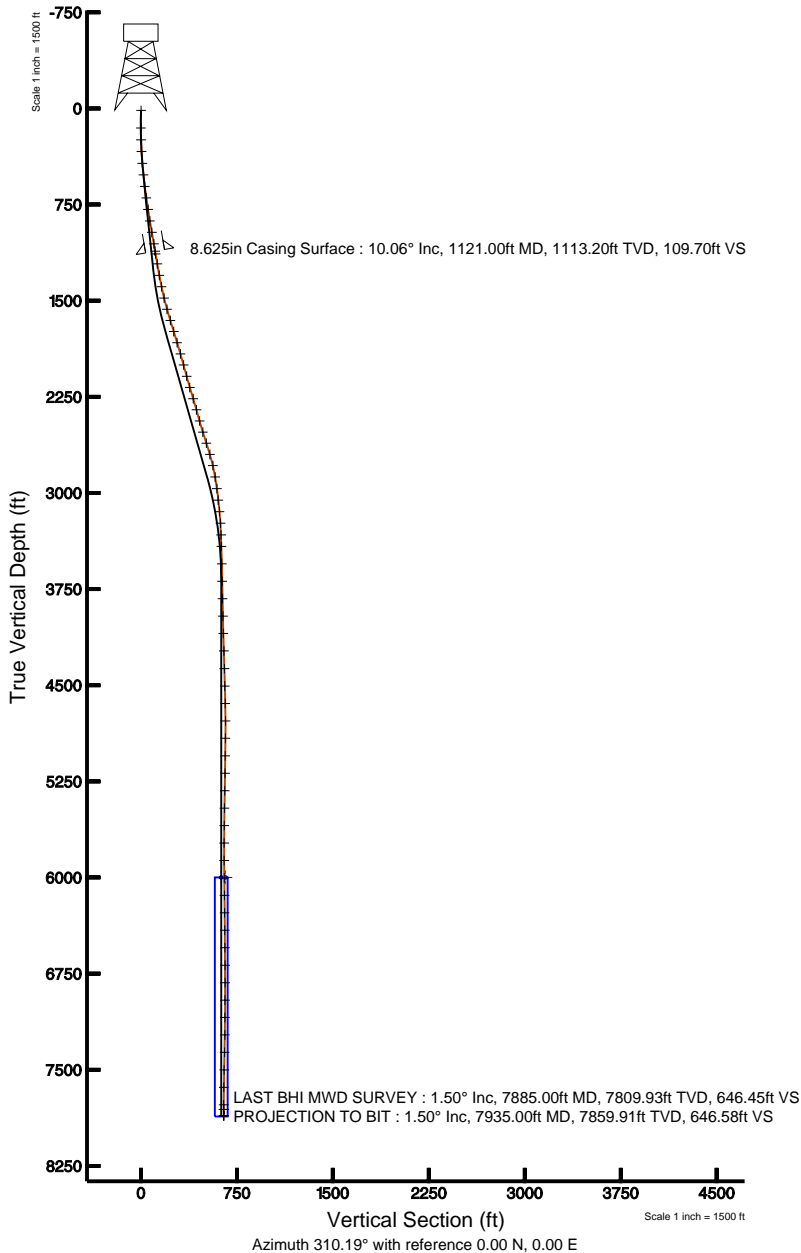
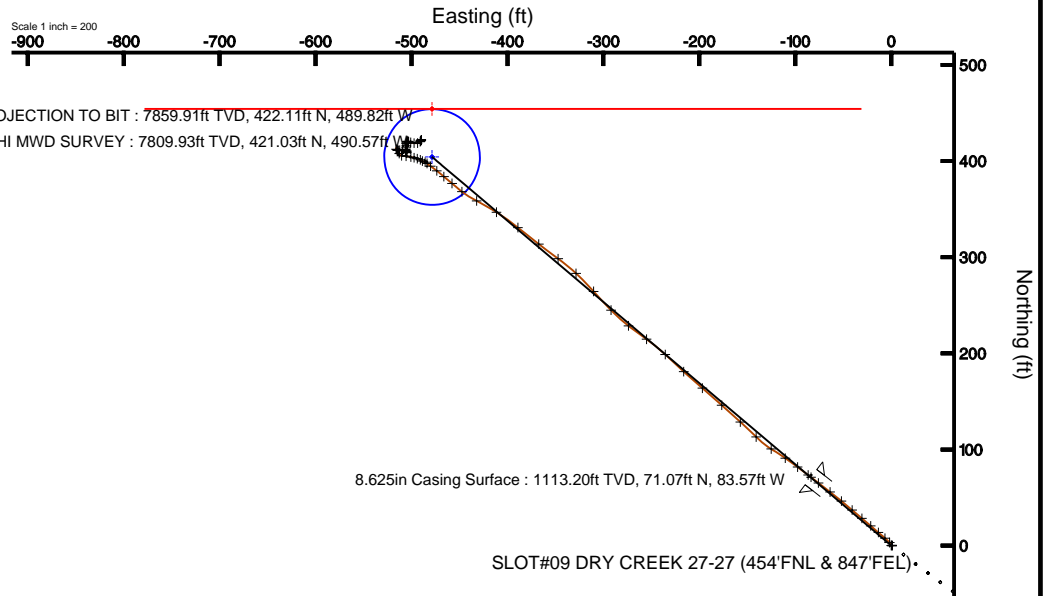


KERR MCGEE OIL & GAS ONSHORE LP

Location: COLORADO Slot: SLOT#09 DRY CREEK 27-27 (454'FNL & 847'FEL)
 Field: WELD COUNTY (KERR MCGEE) Well: DRY CREEK 27-27
 Facility: SEC.27-T1N-R67W Wellbore: DRY CREEK 27-27 PWB



Plot reference wellpath is DRY CREEK 27-27 (REV-B.0) PWP	
True vertical depths are referenced to XTREME 12 (RKB)	Grid System: NAD83 / Lambert Colorado State Planes, Northern Zone (501), US feet
Measured depths are referenced to XTREME 12 (RKB)	North Reference: True north
XTREME 12 (RKB) to Mean Sea Level: 5008 feet	Scale: True distance
Mean Sea Level to Mud line (Facility: SEC.27-T1N-R67W): 0 feet	Depths are in feet
Coordinates are in feet referenced to Slot	Created by: cookdamm on 12/29/2010



BGGM (1945.0 to 2012.0) Dip: 66.76° Field: 53002 nT
 Magnetic North is 8.94 degrees East of True North (at 11/18/2010)

To correct azimuth from Magnetic to True add 8.94 degrees
 For example: if the Magnetic North Azimuth = 90 degs, then the Grid North Azimuth = 90 + 8.94 = 98.94



Actual Wellpath Report

DRY CREEK 27-27 AWP

Page 1 of 5



INTEQ

REFERENCE WELLPATH IDENTIFICATION

Operator	KERR MCGEE OIL & GAS ONSHORE LP	Slot	SLOT#09 DRY CREEK 27-27 (454'FNL & 847'FEL)
Area	COLORADO	Well	DRY CREEK 27-27
Field	WELD COUNTY (KERR MCGEE)	Wellbore	DRY CREEK 27-27 AWB
Facility	SEC.27-T1N-R67W		

REPORT SETUP INFORMATION

Projection System	NAD83 / Lambert Colorado State Planes, Northern Zone (501), US feet	Software System	WellArchitect® 2.0
North Reference	True	User	Cookdanm
Scale	0.999964	Report Generated	12/29/2010 at 2:29:52 PM
Convergence at slot	0.41° East	Database/Source file	Denver Server/DRY_CREEK_27-27_AWB.xml

WELLPATH LOCATION

	Local coordinates		Grid coordinates		Geographic coordinates	
	North[ft]	East[ft]	Easting[USft]	Northing[USft]	Latitude	Longitude
Slot Location	721.50	3248.28	3176341.04	1253712.71	40°01'41.196"N	104°52'13.048"W
Facility Reference Pt			3173097.99	1252968.61	40°01'34.068"N	104°52'54.804"W
Field Reference Pt			3197771.84	1268891.29	40°04'09.600"N	104°47'36.000"W

WELLPATH DATUM

Calculation method	Minimum curvature	XTREME 12 (RKB) to Facility Vertical Datum	5008.00ft
Horizontal Reference Pt	Slot	XTREME 12 (RKB) to Mean Sea Level	5008.00ft
Vertical Reference Pt	XTREME 12 (RKB)	Facility Vertical Datum to Mud Line (Facility)	0.00ft
MD Reference Pt	XTREME 12 (RKB)	Section Origin	N 0.00, E 0.00 ft
Field Vertical Reference	Mean Sea Level	Section Azimuth	310.19°



Actual Wellpath Report

DRY CREEK 27-27 AWP

Page 2 of 5



INTEQ

REFERENCE WELLPATH IDENTIFICATION

Operator	KERR MCGEE OIL & GAS ONSHORE LP	Slot	SLOT#09 DRY CREEK 27-27 (454'FNL & 847'FEL)
Area	COLORADO	Well	DRY CREEK 27-27
Field	WELD COUNTY (KERR MCGEE)	Wellbore	DRY CREEK 27-27 AWB
Facility	SEC.27-T1N-R67W		

WELLPATH DATA (74 stations) † = interpolated/extrapolated station

MD [ft]	Inclination [°]	Azimuth [°]	TVD [ft]	Vert Sect [ft]	North [ft]	East [ft]	DLS [°/100ft]	Comments
0.00†	0.000	114.400	0.00	0.00	0.00	0.00	0.00	
15.00	0.000	114.400	15.00	0.00	0.00	0.00	0.00	
152.00	0.900	114.400	151.99	-1.04	-0.44	0.98	0.66	
244.00	1.600	325.000	243.98	-0.49	0.31	0.90	2.63	
336.00	3.000	314.100	335.91	3.16	3.04	-1.56	1.59	
428.00	5.300	313.000	427.66	9.80	7.61	-6.40	2.50	
519.00	6.200	308.800	518.20	18.91	13.56	-13.31	1.09	
609.00	7.200	312.000	607.59	29.41	20.38	-21.28	1.19	
700.00	8.100	309.200	697.78	41.52	28.24	-30.49	1.07	
791.00	8.900	311.200	787.78	54.97	36.93	-40.76	0.94	
882.00	9.400	308.800	877.62	69.43	46.23	-51.84	0.69	
972.00	10.000	308.100	966.33	84.59	55.65	-63.72	0.68	
1063.00	9.400	307.800	1056.03	99.91	65.08	-75.81	0.66	
1142.00	10.300	307.400	1133.86	113.41	73.33	-86.52	1.14	
1221.00	9.800	306.700	1211.65	127.18	81.63	-97.52	0.65	
1312.00	10.200	305.000	1301.27	142.93	90.88	-110.33	0.55	
1403.00	12.100	301.100	1390.55	160.38	100.43	-125.10	2.25	
1494.00	13.500	315.500	1479.31	180.38	112.94	-140.71	3.82	
1584.00	15.800	311.600	1566.38	203.09	128.57	-157.24	2.78	
1675.00	17.500	312.000	1653.56	229.15	145.95	-176.68	1.87	
1766.00	16.800	310.900	1740.51	255.98	163.72	-196.78	0.85	
1857.00	16.400	312.300	1827.72	281.96	180.97	-216.23	0.62	
1948.00	17.200	313.000	1914.84	308.24	198.80	-235.57	0.91	
2038.00	15.300	305.000	2001.25	333.36	214.69	-255.03	3.26	
2129.00	14.600	308.100	2089.17	356.78	228.65	-273.89	1.17	
2220.00	16.500	315.500	2176.84	381.12	244.95	-291.98	3.01	
2311.00	17.600	318.300	2263.84	407.60	264.44	-310.19	1.51	
2402.00	15.900	312.700	2350.98	433.68	283.16	-328.51	2.57	
2492.00	15.300	306.000	2437.68	457.84	298.51	-347.17	2.11	
2583.00	16.900	307.800	2525.10	483.03	313.67	-367.34	1.84	
2674.00	18.600	308.800	2611.77	510.76	330.87	-389.10	1.90	
2765.00	16.600	302.100	2698.51	538.14	346.88	-411.43	3.13	
2856.00	13.700	296.500	2786.35	561.49	358.60	-432.09	3.57	
2947.00	9.400	310.200	2875.50	579.40	368.21	-447.42	5.57	
3038.00	7.600	309.500	2965.50	592.85	376.83	-457.74	1.98	
3129.00	6.400	309.900	3055.82	603.94	383.91	-466.28	1.32	
3219.00	5.700	308.500	3145.32	613.42	389.91	-473.62	0.79	
3310.00	4.500	304.200	3235.95	621.49	394.73	-480.11	1.38	
3401.00	1.500	319.400	3326.82	626.22	397.65	-483.84	3.38	
3491.00	1.600	287.000	3416.79	628.54	398.91	-485.81	0.97	
3627.00	1.000	302.400	3552.75	631.46	400.10	-488.63	0.51	
3763.00	1.200	297.500	3688.73	634.02	401.39	-490.89	0.16	
3899.00	1.700	285.900	3824.68	637.25	402.60	-494.09	0.42	
4035.00	1.200	286.300	3960.64	640.39	403.55	-497.40	0.37	
4171.00	1.600	281.000	4096.60	643.35	404.32	-500.63	0.31	



Actual Wellpath Report

DRY CREEK 27-27 AWP

Page 3 of 5



INTEQ

REFERENCE WELLPATH IDENTIFICATION

Operator	KERR MCGEE OIL & GAS ONSHORE LP	Slot	SLOT#09 DRY CREEK 27-27 (454'FNL & 847'FEL)
Area	COLORADO	Well	DRY CREEK 27-27
Field	WELD COUNTY (KERR MCGEE)	Wellbore	DRY CREEK 27-27 AWB
Facility	SEC.27-T1N-R67W		

WELLPATH DATA (74 stations)

MD [ft]	Inclination [°]	Azimuth [°]	TVD [ft]	Vert Sect [ft]	North [ft]	East [ft]	DLS [°/100ft]	Comments
4307.00	2.700	278.900	4232.50	647.75	405.17	-505.66	0.81	
4445.00	1.300	269.500	4370.41	651.71	405.66	-510.44	1.04	
4581.00	2.000	339.800	4506.37	654.94	407.88	-512.80	1.46	
4717.00	1.300	314.100	4642.31	658.55	411.18	-514.73	0.74	
4854.00	0.300	308.500	4779.30	660.46	412.48	-516.12	0.73	
4989.00	1.100	129.200	4914.29	659.51	411.88	-515.40	1.04	
5126.00	0.600	74.700	5051.28	657.79	411.24	-513.69	0.65	
5262.00	0.600	94.700	5187.27	656.81	411.37	-512.29	0.15	
5398.00	1.700	85.500	5323.24	654.80	411.47	-509.57	0.82	
5534.00	1.000	96.800	5459.20	652.37	411.49	-506.38	0.55	
5670.00	0.500	159.400	5595.19	650.86	410.79	-504.99	0.65	
5806.00	0.600	190.300	5731.19	649.99	409.54	-504.91	0.23	
5943.00	0.400	269.500	5868.18	649.99	408.83	-505.52	0.48	
6079.00	1.000	352.800	6004.18	651.23	410.00	-506.14	0.76	
6215.00	0.900	13.200	6140.16	652.59	412.22	-506.04	0.26	
6351.00	0.600	10.400	6276.14	653.42	413.96	-505.67	0.22	
6487.00	1.100	0.200	6412.13	654.62	415.96	-505.54	0.38	
6623.00	0.900	1.600	6548.11	656.12	418.34	-505.50	0.15	
6760.00	0.500	49.700	6685.10	656.69	419.80	-505.02	0.49	
6896.00	0.200	15.300	6821.10	656.70	420.41	-504.50	0.26	
7032.00	0.400	85.200	6957.10	656.46	420.68	-503.97	0.28	
7168.00	0.200	183.300	7093.09	655.98	420.48	-503.51	0.35	
7304.00	0.500	101.400	7229.09	655.32	420.13	-502.94	0.38	
7440.00	1.300	109.800	7365.07	653.35	419.49	-500.91	0.59	
7577.00	1.700	95.100	7502.03	650.23	418.78	-497.42	0.40	
7713.00	1.500	83.800	7637.97	647.36	418.80	-493.64	0.27	
7849.00	1.300	32.100	7773.94	646.35	420.29	-491.05	0.91	
7885.00	1.500	34.600	7809.93	646.45	421.03	-490.57	0.58	LAST BHI MWD SURVEY
7935.00	1.500	34.600	7859.91	646.58	422.11	-489.82	0.00	PROJECTION TO BIT

HOLE & CASING SECTIONS Ref Wellbore: DRY CREEK 27-27 AWB Ref Wellpath: DRY CREEK 27-27 AWP

String/Diameter	Start MD [ft]	End MD [ft]	Interval [ft]	Start TVD [ft]	End TVD [ft]	Start N/S [ft]	Start E/W [ft]	End N/S [ft]	End E/W [ft]
12.25in Open Hole	15.00	1197.00	1182.00	15.00	1188.01	0.00	0.00	79.17	-94.22
8.625in Casing Surface	15.00	1121.00	1106.00	15.00	1113.20	0.00	0.00	71.07	-83.57
7.875in Open Hole	1121.00	7935.00	6814.00	1113.20	7859.91	71.07	-83.57	422.11	-489.82



Actual Wellpath Report

DRY CREEK 27-27 AWP

Page 4 of 5



INTEQ

REFERENCE WELLPATH IDENTIFICATION

Operator	KERR MCGEE OIL & GAS ONSHORE LP	Slot	SLOT#09 DRY CREEK 27-27 (454'FNL & 847'FEL)
Area	COLORADO	Well	DRY CREEK 27-27
Field	WELD COUNTY (KERR MCGEE)	Wellbore	DRY CREEK 27-27 AWB
Facility	SEC.27-T1N-R67W		

TARGETS

Name	MD [ft]	TVD [ft]	North [ft]	East [ft]	Grid East [srv ft]	Grid North [srv ft]	Latitude	Longitude	Shape
DRY CREEK 27-27 GEO TARGET 50' RADIUS (50'FNL & 1325'FEL, REV-1)		6000.00	404.37	-478.60	3175859.60	1254113.65	40°01'45.192"N	104°52'19.200"W	circle
DRY CREEK 27-27 HARDLINE 50'N OF GEO TARGET		6000.00	454.37	-478.60	3175859.24	1254163.66	40°01'45.686"N	104°52'19.200"W	point

WELLPATH COMPOSITION Ref Wellbore: DRY CREEK 27-27 AWB Ref Wellpath: DRY CREEK 27-27 AWP

Start MD [ft]	End MD [ft]	Positional Uncertainty Model	Log Name/Comment	Wellbore
15.00	1142.00	NaviTrak (Standard)	BHI MWD SURVEYS 12.25 HOLE <152-1142>	DRY CREEK 27-27 AWB
1142.00	7885.00	NaviTrak (Standard)	BHI MWD SURVEYS 7.875 HOLE <1221-7885>	DRY CREEK 27-27 AWB
7885.00	7935.00	Blind Drilling (std)	Projection to bit	DRY CREEK 27-27 AWB



Actual Wellpath Report

DRY CREEK 27-27 AWP

Page 5 of 5



INTEQ

REFERENCE WELLPATH IDENTIFICATION

Operator	KERR MCGEE OIL & GAS ONSHORE LP	Slot	SLOT#09 DRY CREEK 27-27 (454'FNL & 847'FEL)
Area	COLORADO	Well	DRY CREEK 27-27
Field	WELD COUNTY (KERR MCGEE)	Wellbore	DRY CREEK 27-27 AWB
Facility	SEC.27-T1N-R67W		

WELLPATH COMMENTS

MD [ft]	Inclination [°]	Azimuth [°]	TVD [ft]	Comment
7885.00	1.500	34.600	7809.93	LAST BHI MWD SURVEY
7935.00	1.500	34.600	7859.91	PROJECTION TO BIT