
BILL BARRETT CORPORATION E-BILL

**GGU FEDERAL 31D-29-691
MAMM CREEK
Garfield County , Colorado**

Cement Surface Casing
03-Dec-2010

Post Job Report

The Road to Excellence Starts with Safety

Sold To #: 343492	Ship To #: 2822764	Quote #:	Sales Order #: 7811646
Customer: BILL BARRETT CORPORATION E-BILL	Customer Rep: South, Jody		
Well Name: GGU FEDERAL	Well #: 31D-29-691	API/UWI #: 05-045-19802	
Field: MAMM CREEK	City (SAP): SILT	County/Parish: Garfield	State: Colorado
Lat: N 39.503 deg. OR N 39 deg. 30 min. 10.177 secs.	Long: W 107.573 deg. OR W -108 deg. 25 min. 36.001 secs.		
Contractor: Pro Petro	Rig/Platform Name/Num: Pro Petro		
Job Purpose: Cement Surface Casing			
Well Type: Development Well	Job Type: Cement Surface Casing		
Sales Person: METLI, MARSHALL	Srvc Supervisor: KUKUS, CRAIG	MBU ID Emp #: 369124	

Job Personnel

HES Emp Name	Exp Hrs	Emp #	HES Emp Name	Exp Hrs	Emp #	HES Emp Name	Exp Hrs	Emp #
BLUST, CHARLES Thomas	10	386662	BORSZICH, STEPHEN A	10	412388	KUKUS, CRAIG A	10	369124
MAGERS, MICHAEL Gerard	10	339439						

Equipment

HES Unit #	Distance-1 way	HES Unit #	Distance-1 way	HES Unit #	Distance-1 way	HES Unit #	Distance-1 way
10592964	60 mile	10744549	60 mile	10744648C	60 mile	10829469	60 mile
10998508	60 mile						

Job Hours

Date	On Location Hours	Operating Hours	Date	On Location Hours	Operating Hours	Date	On Location Hours	Operating Hours
12/2/10	4	0	12/3/10	6	1			

TOTAL Total is the sum of each column separately

Job

Formation Name	Top	Bottom	Called Out	Date	Time	Time Zone
Formation Depth (MD)			On Location	02 - Dec - 2010	05:00	MST
Form Type		BHST	Job Started	02 - Dec - 2010	10:00	MST
Job depth MD	807. ft	Job Depth TVD	Job Completed	03 - Dec - 2010	04:28	MST
Water Depth		Wk Ht Above Floor	Departed Loc	03 - Dec - 2010	05:09	MST
Perforation Depth (MD)	From	To		03 - Dec - 2010	06:30	MST

Well Data

Description	New / Used	Max pressure psig	Size in	ID in	Weight lbm/ft	Thread	Grade	Top MD ft	Bottom MD ft	Top TVD ft	Bottom TVD ft
-------------	------------	-------------------	---------	-------	---------------	--------	-------	-----------	--------------	------------	---------------

Sales/Rental/3rd Party (HES)

Description	Qty	Qty uom	Depth	Supplier
PLUG,CMTG,TOP,9 5/8,HWE,8.16 MIN/9.06 MA	1	EA		
R/A DENSOMETER W/CHART RECORDER,/JOB,ZI	1	JOB		
ADC (AUTO DENSITY CTRL) SYS, /JOB,ZI	1	JOB		
PORT. DATA ACQUIS. W/OPTICEM RT W/HES	1	EA		

Tools and Accessories

Type	Size	Qty	Make	Depth	Type	Size	Qty	Make	Depth	Type	Size	Qty	Make
Guide Shoe					Packer					Top Plug	9 5/8	1	HES
Float Shoe					Bridge Plug					Bottom Plug			
Float Collar					Retainer					SSR plug set			
Insert Float										Plug Container	9 5/8	1	HES
Stage Tool										Centralizers			

Miscellaneous Materials

Gelling Agt	Conc	Surfactant	Conc	Acid Type	Qty	Conc	%
Treatment Fld	Conc	Inhibitor	Conc	Sand Type	Size	Qty	

Fluid Data

Stage/Plug #: 1

Fluid #	Stage Type	Fluid Name	Qty	Qty uom	Mixing Density lbm/gal	Yield ft ³ /sk	Mix Fluid Gal/sk	Rate bbl/min	Total Mix Fluid Gal/sk
1	Water Spacer		20.00	bbl	.	.0	.0	.0	
2	VersaCem Lead Slurry	VERSACEM (TM) SYSTEM (452010)	120.0	sacks	12.3	2.38	13.77		13.77
	13.77 Gal	FRESH WATER							
3	SwiftCem Tail Slurry	SWIFTCEM (TM) SYSTEM (452990)	120.0	sacks	14.2	1.43	6.85		6.85
	6.85 Gal	FRESH WATER							
4	Displacement		55.00	bbl	.	.0	.0	.0	
Calculated Values		Pressures		Volumes					
Displacement	55	Shut In: Instant		Lost Returns	0	Cement Slurry	82	Pad	
Top Of Cement	SURFACE	5 Min		Cement Returns	30	Actual Displacement	55	Treatment	
Frac Gradient		15 Min		Spacers	20	Load and Breakdown		Total Job	156
Rates									
Circulating		Mixing	5	Displacement	5	Avg. Job			5
Cement Left In Pipe	Amount	42.71ft	Reason	Shoe Joint					
Frac Ring # 1 @	ID		Frac ring # 2 @	ID		Frac Ring # 3 @	ID		Frac Ring # 4 @
The Information Stated Herein Is Correct				Customer Representative Signature					

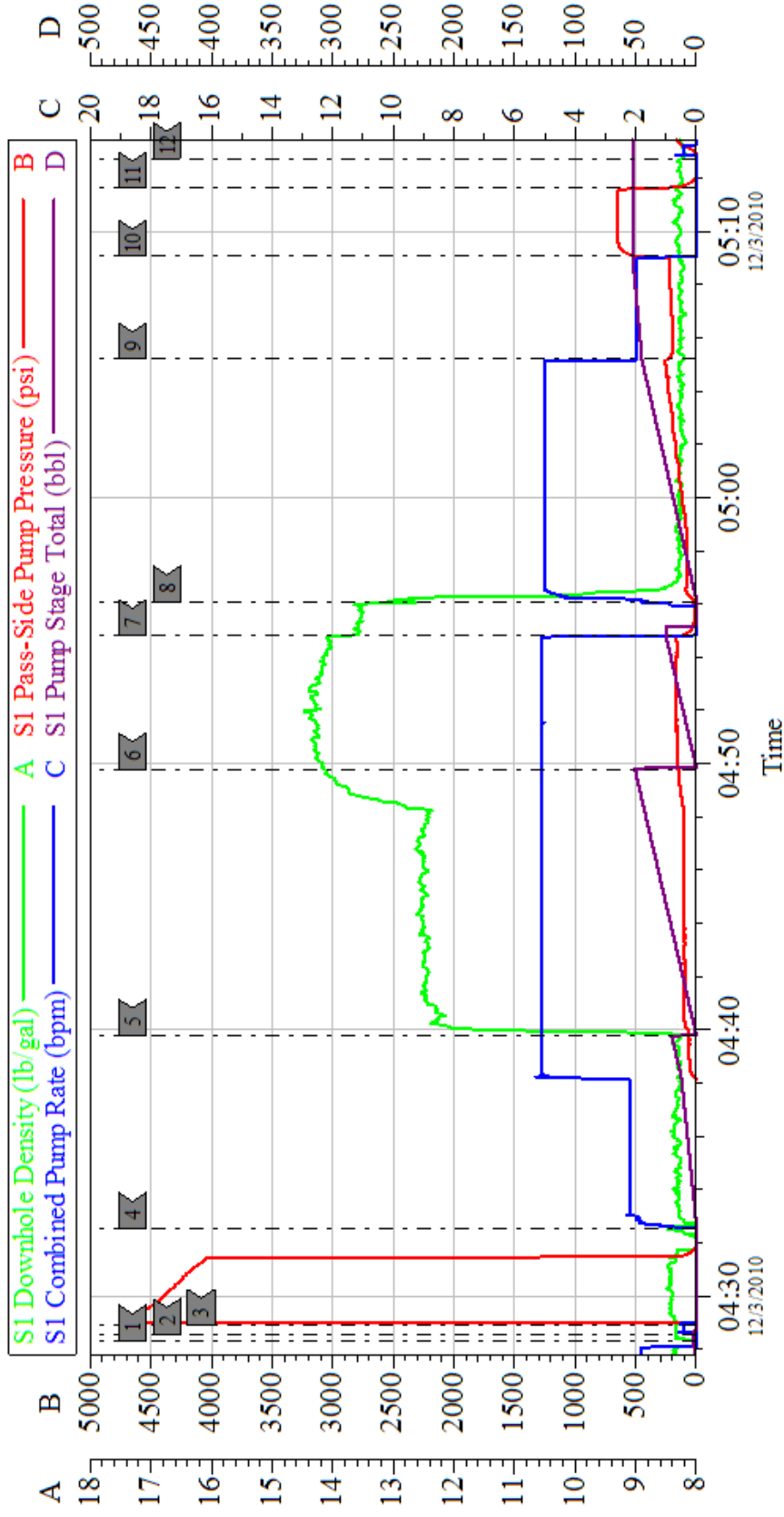
The Road to Excellence Starts with Safety

Sold To #: 343492	Ship To #: 2822764	Quote #:	Sales Order #: 7811646
Customer: BILL BARRETT CORPORATION E-BILL		Customer Rep: South, Jody	
Well Name: GGU FEDERAL	Well #: 31D-29-691	API/UWI #: 05-045-19802	
Field: MAMM CREEK	City (SAP): SILT	County/Parish: Garfield	State: Colorado
Legal Description:			
Lat: N 39.503 deg. OR N 39 deg. 30 min. 10.177 secs.		Long: W 107.573 deg. OR W -108 deg. 25 min. 36.001 secs.	
Contractor: Pro Petro		Rig/Platform Name/Num: Pro Petro	
Job Purpose: Cement Surface Casing			Ticket Amount:
Well Type: Development Well		Job Type: Cement Surface Casing	
Sales Person: METLI, MARSHALL		Srvc Supervisor: KUKUS, CRAIG	MBU ID Emp #: 369124

Activity Description	Date/Time	Cht #	Rate bbl/min	Volume bbl		Pressure psig		Comments
				Stage	Total	Tubing	Casing	
Call Out	12/02/2010 14:30							JOB #2 GGU FED 31D-29-691 / CREW STAYED ON LOCATION RIGGED UP AND READY
Depart Yard Safety Meeting	12/02/2010 14:30							ON LOCATION
Assessment Of Location Safety Meeting	12/03/2010 02:32							ASSESSMENT OF LOCATION INVOLVING THE ENTIRE CMT CREW
Pre-Rig Up Safety Meeting	12/03/2010 02:32							SAFETY MEETING INVOLVING THE ENTIRE CMT CREW
Rig-Up Equipment	12/03/2010 03:30							RIG DONE WITH RUNNING CSG/ HES RIG UPHEAD AND IRON TO HEAD
Circulate Well	12/03/2010 03:30							NONE
Pre-Job Safety Meeting	12/03/2010 04:15							SAFETY MEETING INVOLVING EVERYONE ON LOCATION
Start Job	12/03/2010 04:28							T.D 760 FT T.P 740.74 FT S.J 42.71 FT OH 12 3/8 MUD WT 8.3
Other	12/03/2010 04:28		2	2			6.0	FILL LINES
Pressure Test	12/03/2010 04:28		0.5			4700.0		PRESSURE TEST GOOD
Pump Spacer 1	12/03/2010 04:32		5	20			95.0	FRESH WATER SPACER
Pump Lead Cement	12/03/2010 04:39		5	50.8			155.0	PUMP LEAD CEMENT AT 12.3 PPG 2.38 Y 13.77 GAL/SKS

Activity Description	Date/Time	Cht #	Rate bbl/min	Volume bbl		Pressure psig		Comments
				Stage	Total	Tubing	Casing	
Pump Tail Cement	12/03/2010 04:49		5	30.6			182.0	PUMP TAIL CEMENT AT 14.2 PPG 1.43 Y 6.85 GAL/SKS / GOT RETURNS 17 BBLS INTO TAIL GONE
Shutdown	12/03/2010 04:54							
Drop Top Plug	12/03/2010 04:54							PLUG LEFT THE PLUG CONTAINER
Pump Displacement	12/03/2010 04:56		5	55			217.0	HAD RETURNS THRU OUT DISPLACEMENT / GOT 30 BBL CEMENT BACK
Slow Rate	12/03/2010 05:05		2	45			187.0	
Bump Plug	12/03/2010 05:09		2	55			670.0	PLUG LANDED AT 217 PSI BUMPED UP TO 670 PSI/ FLOATS HELD/GOT 1/2 BBL BACK/ PUMPED BACK UP TO 200 PSI SHUT IN 2 IN
Check Floats	12/03/2010 05:11							FLOATS HELD
End Job	12/03/2010 05:12							GOT 30 BBL CEMENT BACK TO SURFACE
Pre-Rig Down Safety Meeting	12/03/2010 05:15							SAFETY MEETING INVOLVING THE ENTIRE CMT CREW
Rig-Down Equipment	12/03/2010 05:30							
Safety Meeting - Departing Location	12/03/2010 06:20							SAFETY MEETING INVOLVING THE ENTIRE CMT CREW
Comment	12/03/2010 06:30							THANK YOU FOR USING HALLIBURTON, CRAIG KUKUS AND CREW
Arrive At Loc	12/03/2010 14:30							12/3/10 02:30 RIG RUNNING CSG

BARRETT SURFACE



Customer: BARRETT	Job Date: 03-Dec-2010	Sales Order #: 7811646
Well Description: GGU 31D-29-691	Job Type: SURFACE	ADC Used: YES
Company Rep: JODY SOUTH	Cement Supervisor: CRAIGKUKUS	Elite #/Operator: ELITE 6 STEVE BORSZICH