

---

# **BILL BARRETT CORPORATION E-BILL**

---

**GGU FED 34A-20-691  
MAMM CREEK  
Garfield County , Colorado**

**Cement Surface Casing**  
**03-Dec-2010**

**Post Job Report**

## The Road to Excellence Starts with Safety

Sold To #: 343492	Ship To #: 2822756	Quote #:	Sales Order #: 7812220
Customer: BILL BARRETT CORPORATION E-BILL	Customer Rep: South, Jody		
Well Name: GGU FED	Well #: 34A-20-691	API/UWI #: 05-045-19805	
Field: MAMM CREEK	City (SAP): SILT	County/Parish: Garfield	State: Colorado
Lat: N 39.503 deg. OR N 39 deg. 30 min. 10.12 secs.	Long: E 107.573 deg. OR E 107 deg. 34 min. 23.812 secs.		
Contractor: Pro Petro	Rig/Platform Name/Num: Pro Petro		
Job Purpose: Cement Surface Casing			
Well Type: Development Well	Job Type: Cement Surface Casing		
Sales Person: METLI, MARSHALL	Srvc Supervisor: KUKUS, CRAIG	MBU ID Emp #: 369124	

## Job Personnel

HES Emp Name	Exp Hrs	Emp #	HES Emp Name	Exp Hrs	Emp #	HES Emp Name	Exp Hrs	Emp #
BLUST, CHARLES Thomas	10	386662	BORSZICH, STEPHEN A	10	412388	KUKUS, CRAIG A	10	369124
MAGERS, MICHAEL Gerard	10	339439						

## Equipment

HES Unit #	Distance-1 way	HES Unit #	Distance-1 way	HES Unit #	Distance-1 way	HES Unit #	Distance-1 way
10713212	60 mile	10741123	60 mile	10744648C	60 mile	10829469	60 mile
10998508	60 mile						

## Job Hours

Date	On Location Hours	Operating Hours	Date	On Location Hours	Operating Hours	Date	On Location Hours	Operating Hours
12/3/10	10	2						

TOTAL	Total is the sum of each column separately							
-------	--	--	--	--	--	--	--	--

## Job

Formation Name						Date	Time	Time Zone
Formation Depth (MD)	Top		Bottom		Called Out	03 - Dec - 2010	08:30	MST
Form Type			BHST		On Location	03 - Dec - 2010	14:00	MST
Job depth MD	760. ft		Job Depth TVD	760. ft	Job Started	03 - Dec - 2010	18:52	MST
Water Depth			Wk Ht Above Floor	4. ft	Job Completed	03 - Dec - 2010	19:38	MST
Perforation Depth (MD)	From		To		Departed Loc	03 - Dec - 2010	21:00	MST

## Well Data

Description	New / Used	Max pressure psig	Size in	ID in	Weight lbm/ft	Thread	Grade	Top MD ft	Bottom MD ft	Top TVD ft	Bottom TVD ft
-------------	------------	-------------------	---------	-------	---------------	--------	-------	-----------	--------------	------------	---------------

Sales/Rental/3<sup>rd</sup> Party (HES)

Description	Qty	Qty uom	Depth	Supplier
PLUG,CMTG,TOP,9 5/8,HWE,8.16 MIN/9.06 MA	1	EA		

## Tools and Accessories

Type	Size	Qty	Make	Depth	Type	Size	Qty	Make	Depth	Type	Size	Qty	Make
Guide Shoe					Packer					Top Plug	9 5/8	1	HES
Float Shoe					Bridge Plug					Bottom Plug			
Float Collar					Retainer					SSR plug set			
Insert Float										Plug Container	9 5/8	1	HES
Stage Tool										Centralizers			

## Miscellaneous Materials

Gelling Agt	Conc	Surfactant	Conc	Acid Type	Qty	Conc	%
Treatment Fld	Conc	Inhibitor	Conc	Sand Type	Size		Qty

## Fluid Data

Stage/Plug #: 1	Fluid #	Stage Type	Fluid Name	Qty	Qty uom	Mixing Density lbm/gal	Yield ft3/sk	Mix Fluid Gal/sk	Rate bbl/min	Total Mix Fluid Gal/sk
-----------------	---------	------------	------------	-----	---------	------------------------	--------------	------------------	--------------	------------------------

Stage/Plug #: 1									
Fluid #	Stage Type	Fluid Name	Qty	Qty uom	Mixing Density lbm/gal	Yield ft <sup>3</sup> /sk	Mix Fluid Gal/sk	Rate bbl/min	Total Mix Fluid Gal/sk
1	WATER SPACER		20.00	bbl	.	.0	.0	.0	
2	Lead Cement	VERSACEM (TM) SYSTEM (452010)	120.0	sacks	12.3	2.38	13.77		13.77
	13.77 Gal	FRESH WATER							
3	Tail Cement	SWIFTCEM (TM) SYSTEM (452990)	120.0	sacks	14.2	1.43	6.85		6.85
	6.85 Gal	FRESH WATER							
4	DISPLACEMENT		54.00	bbl	.	.0	.0	.0	
Calculated Values		Pressures		Volumes					
Displacement	54	Shut In: Instant		Lost Returns	0	Cement Slurry	81.5	Pad	
Top Of Cement	SURFACE	5 Min		Cement Returns	24	Actual Displacement	54	Treatment	
Frac Gradient		15 Min		Spacers	20	Load and Breakdown		Total Job	156
Rates									
Circulating		Mixing	5	Displacement	5	Avg. Job		5	
Cement Left In Pipe	Amount	43.50 ft	Reason	Shoe Joint					
Frac Ring # 1 @	ID	Frac ring # 2 @	ID	Frac Ring # 3 @	ID	Frac Ring # 4 @	ID		
The Information Stated Herein Is Correct				Customer Representative Signature					

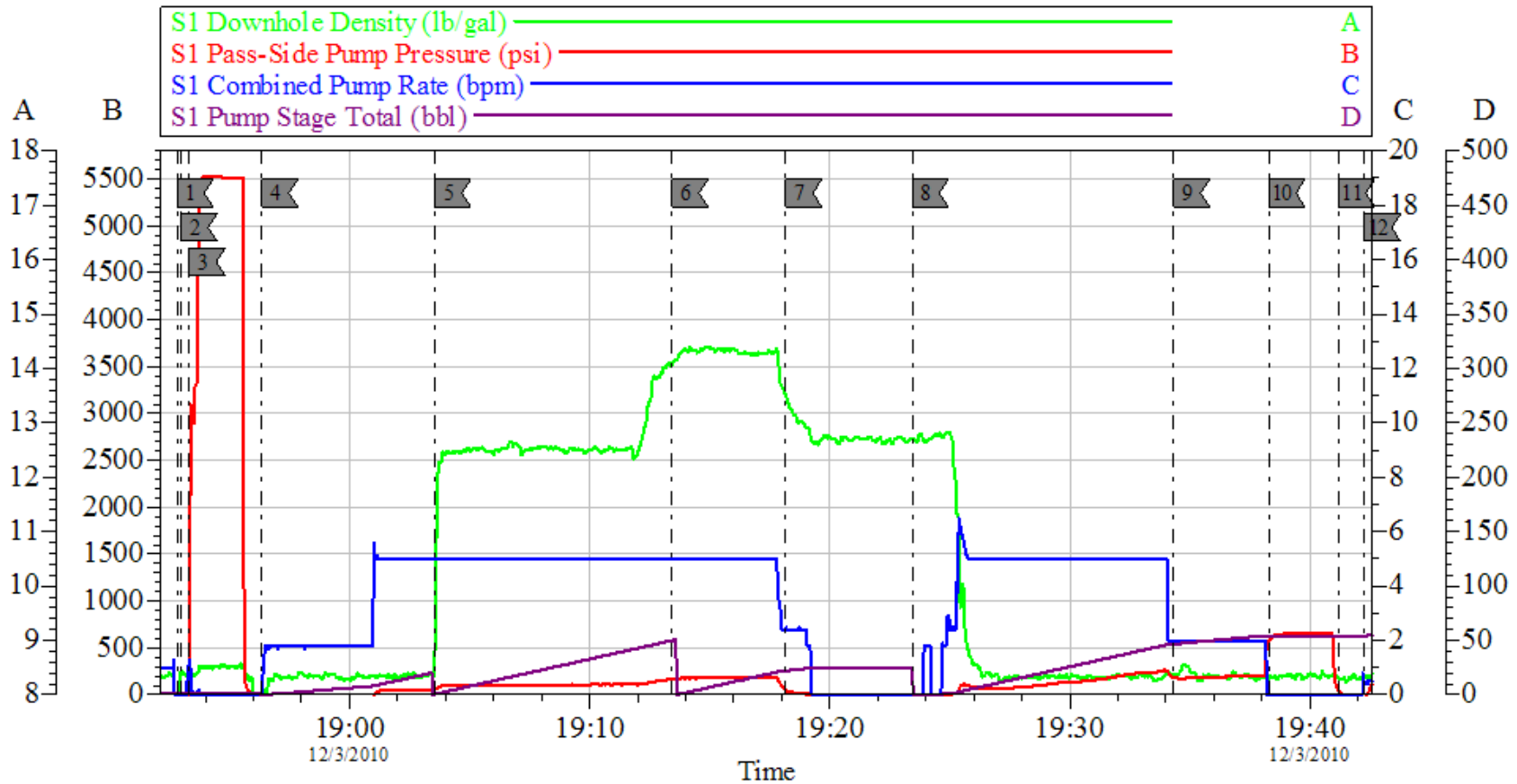
*The Road to Excellence Starts with Safety*

<b>Sold To #:</b> 343492	<b>Ship To #:</b> 2822756	<b>Quote #:</b>	<b>Sales Order #:</b> 7812220
<b>Customer:</b> BILL BARRETT CORPORATION E-BILL		<b>Customer Rep:</b> South, Jody	
<b>Well Name:</b> GGU FED	<b>Well #:</b> 34A-20-691	<b>API/UWI #:</b> 05-045-19805	
<b>Field:</b> MAMM CREEK	<b>City (SAP):</b> SILT	<b>County/Parish:</b> Garfield	<b>State:</b> Colorado
<b>Legal Description:</b>			
<b>Lat:</b> N 39.503 deg. OR N 39 deg. 30 min. 10.12 secs.		<b>Long:</b> E 107.573 deg. OR E 107 deg. 34 min. 23.812 secs.	
<b>Contractor:</b> Pro Petro		<b>Rig/Platform Name/Num:</b> Pro Petro	
<b>Job Purpose:</b> Cement Surface Casing			<b>Ticket Amount:</b>
<b>Well Type:</b> Development Well		<b>Job Type:</b> Cement Surface Casing	
<b>Sales Person:</b> METLI, MARSHALL		<b>Srv Supervisor:</b> KUKUS, CRAIG	<b>MBU ID Emp #:</b> 369124

Activity Description	Date/Time	Cht #	Rate bbl/min	Volume bbl		Pressure psig		Comments
				Stage	Total	Tubing	Casing	
Call Out	12/03/2010 08:30							CREW ON LOCATION / DEPARTED BACK TO YARD TO PICK UP TO NEW TRUCK LOADS
Depart Yard Safety Meeting	12/03/2010 11:30							SAFETY MEETING INVOLVING THE ENTIRE CMT CREW
Arrive At Loc	12/03/2010 14:00							
Assessment Of Location Safety Meeting	12/03/2010 14:15							ASSESSMENT OF LOCATION INVOLVING THE ENTIRE CMT CREW
Pre-Rig Up Safety Meeting	12/03/2010 14:20							SAFETY MEETING INVOLVING THE ENTIRE CMT CREW
Rig-Up Equipment	12/03/2010 14:20							ALREADY RIGGED UP/RIG HEAD UP TO NEW HOLE WHEN RIG IS DONE
Circulate Well	12/03/2010 14:20							NONE
Pre-Job Safety Meeting	12/03/2010 18:45							SAFETY MEETING INVOLVING EVERYONE ON LOCATION
Start Job	12/03/2010 18:52							T.D 760 FT T.P 741.56 FT S.J 43.50 OH 12 3/8 MUD WT 8.3
Other	12/03/2010 18:52		2	2				FILL LINES
Pressure Test	12/03/2010 18:53		0.5			5000.0		PRESSURE TEST GOOD
Pump Spacer 1	12/03/2010 18:56		5	20			60.0	FRESH WATER SPACER

Activity Description	Date/Time	Cht #	Rate bbl/min	Volume bbl		Pressure psig		Comments
				Stage	Total	Tubing	Casing	
Pump Lead Cement	12/03/2010 19:03		5	50.8			155.0	PUMP LEAD CEMENT AT 12.3 PPG 2.38 Y 13.77 GAL/SKS
Pump Tail Cement	12/03/2010 19:13		5	30.6			200.0	PUMP TAIL CEMENT AT 14.2 PPG 1.43 Y 6.85 GAL/SKS / GOT RETURNS WITH 24 BBL GONE ON TAIL
Shutdown	12/03/2010 19:18							
Drop Top Plug	12/03/2010 19:18							PLUG LEFT THE PLUG CONTAINER ALITTLE SLOW STICKY
Pump Displacement	12/03/2010 19:23		5	55			234.0	PUMP FRESH WATER DISPLACEMENT / HAD GOOD RETURNS AND CEMENT BACK AT30 BBL GONE
Slow Rate	12/03/2010 19:34		2	45			190.0	SLOW TO 2BBL MIN LAST 10 BBL
Bump Plug	12/03/2010 19:38		2	55			665.0	PLUG LANDED AT 202 PSI BUMPED UP TO 665 PSI
Check Floats	12/03/2010 19:41							FLOATS HELD GOT 1/2 BBLBACK TO TANKS AND 24 BBL CEMENT BACK TOTAL TO SURFACE
End Job	12/03/2010 19:42							
Pre-Rig Down Safety Meeting	12/03/2010 19:45							SAFETY MEETING INVOLVING THE ENTIRE CMT CREW
Rig-Down Equipment	12/03/2010 20:00							
Safety Meeting - Departing Location	12/03/2010 20:00							CREW STAYED ON LOCATION FOR NEXT JOB
Comment	12/03/2010 21:00							THANK YOU FOR USING HALLIBURTON, CRAIG KUKUS AND CREW

# BARRETT SURFACE



## Local Event Log

1 START JOB	18:52:50	2 PRIME LINES	18:52:59	3 PRESSURE TEST	18:53:20
4 PUMP H2O SPACER	18:56:21	5 PUMP LEAD CEMENT	19:03:33	6 PUMP TAIL CEMENT	19:13:26
7 SHUT DOWN/DROP PLUG	19:18:10	8 PUMP DISPLACEMENT	19:23:26	9 SLOW RATE	19:34:19
10 BUMP PLUG	19:38:18	11 CKECK FLOATS	19:41:11	12 END JOB	19:42:16

Customer: BARRETT  
 Well Description: GGU FED 34A-20-691  
 Company Rep: JODY SOUTH

Job Date: 03-Dec-2010  
 Job Type: SURFACE  
 Cement Supervisor: CRAIGKUKUS

Sales Order #: 7812220  
 ADC Used: YES  
 Elite #/Operator: ELITE 6 STEVE BORSZICH

OptiCem v6.4.8  
 03-Dec-10 19:45