

---

# **BILL BARRETT CORPORATION E-BILL**

---

**GGU JOLLEY 44B-20-691  
MAMM CREEK  
Garfield County , Colorado**

**Cement Surface Casing**  
**04-Dec-2010**

**Post Job Report**

## The Road to Excellence Starts with Safety

Sold To #: 343492	Ship To #: 2822755	Quote #:	Sales Order #: 7812218
Customer: BILL BARRETT CORPORATION E-BILL	Customer Rep: South, Jody		
Well Name: GGU JOLLEY	Well #: 44B-20-691	API/UWI #: 05-045-19796	
Field: MAMM CREEK	City (SAP): SILT	County/Parish: Garfield	State: Colorado
Lat: N 39.503 deg. OR N 39 deg. 30 min. 10.062 secs.	Long: W 107.573 deg. OR W -108 deg. 25 min. 36.379 secs.		
Contractor: Pro Petro	Rig/Platform Name/Num: Pro Petro		
Job Purpose: Cement Surface Casing			
Well Type: Development Well	Job Type: Cement Surface Casing		
Sales Person: METLI, MARSHALL	Srv Supervisor: KUKUS, CRAIG	MBU ID Emp #: 369124	

## Job Personnel

HES Emp Name	Exp Hrs	Emp #	HES Emp Name	Exp Hrs	Emp #	HES Emp Name	Exp Hrs	Emp #
BLUST, CHARLES Thomas	13	386662	BORSZICH, STEPHEN A	13	412388	KUKUS, CRAIG A	13	369124
MAGERS, MICHAEL Gerard	13	339439						

## Equipment

HES Unit #	Distance-1 way	HES Unit #	Distance-1 way	HES Unit #	Distance-1 way	HES Unit #	Distance-1 way
10297346	60 mile	10744648C	60 mile	10829469	60 mile	10998508	60 mile
11071559	60 mile						

## Job Hours

Date	On Location Hours	Operating Hours	Date	On Location Hours	Operating Hours	Date	On Location Hours	Operating Hours
12/3/10	3	0	12/4/10	10	1			

**TOTAL** Total is the sum of each column separately

Job				Job Times			
Formation Name				Date	Time	Time Zone	
Formation Depth (MD)	Top	Bottom		Called Out	03 - Dec - 2010	21:00	MST
Form Type		BHST		On Location	04 - Dec - 2010	06:00	MST
Job depth MD	760. ft	Job Depth TVD	760. ft	Job Started	04 - Dec - 2010	09:10	MST
Water Depth		Wk Ht Above Floor	4. ft	Job Completed	04 - Dec - 2010	09:50	MST
Perforation Depth (MD)	From	To		Departed Loc	04 - Dec - 2010	11:00	MST

## Well Data

Description	New / Used	Max pressure psig	Size in	ID in	Weight lbm/ft	Thread	Grade	Top MD ft	Bottom MD ft	Top TVD ft	Bottom TVD ft
-------------	------------	-------------------	---------	-------	---------------	--------	-------	-----------	--------------	------------	---------------

Sales/Rental/3<sup>rd</sup> Party (HES)

Description	Qty	Qty uom	Depth	Supplier
PLUG,CMTG,TOP,9 5/8,HWE,8.16 MIN/9.06 MA	1	EA		

## Tools and Accessories

Type	Size	Qty	Make	Depth	Type	Size	Qty	Make	Depth	Type	Size	Qty	Make
Guide Shoe					Packer					Top Plug	9 5/8	1	HES
Float Shoe					Bridge Plug					Bottom Plug			
Float Collar					Retainer					SSR plug set			
Insert Float										Plug Container	9 5/8	1	HES
Stage Tool										Centralizers			

## Miscellaneous Materials

Gelling Agt	Conc	Surfactant	Conc	Acid Type	Qty	Conc	%
Treatment Fld	Conc	Inhibitor	Conc	Sand Type	Size		Qty

## Fluid Data

Stage/Plug #: 1									
Fluid #	Stage Type	Fluid Name	Qty	Qty uom	Mixing Density lbm/gal	Yield ft3/sk	Mix Fluid Gal/sk	Rate bbl/min	Total Mix Fluid Gal/sk

Stage/Plug #: 1									
Fluid #	Stage Type	Fluid Name	Qty	Qty uom	Mixing Density lbm/gal	Yield ft <sup>3</sup> /sk	Mix Fluid Gal/sk	Rate bbl/min	Total Mix Fluid Gal/sk
1	WATER SPACER		20.00	bbl	.	.0	.0	.0	
2	Lead Cement	VERSACEM (TM) SYSTEM (452010)	120.0	sacks	12.3	2.38	13.77		13.77
	13.77 Gal	FRESH WATER							
3	Tail Cement	SWIFTCEM (TM) SYSTEM (452990)	120.0	sacks	14.2	1.43	6.85		6.85
	6.85 Gal	FRESH WATER							
4	DISPLACEMENT		55.00	bbl	.	.0	.0	.0	
Calculated Values		Pressures		Volumes					
Displacement		Shut In: Instant		Lost Returns		Cement Slurry		Pad	
Top Of Cement		5 Min		Cement Returns		Actual Displacement		Treatment	
Frac Gradient		15 Min		Spacers		Load and Breakdown		Total Job	
Rates									
Circulating		Mixing	5	Displacement	5	Avg. Job	5		
Cement Left In Pipe	Amount	45 ft	Reason	Shoe Joint					
Frac Ring # 1 @	ID	Frac ring # 2 @	ID	Frac Ring # 3 @	ID	Frac Ring # 4 @	ID		
The Information Stated Herein Is Correct				Customer Representative Signature					

*The Road to Excellence Starts with Safety*

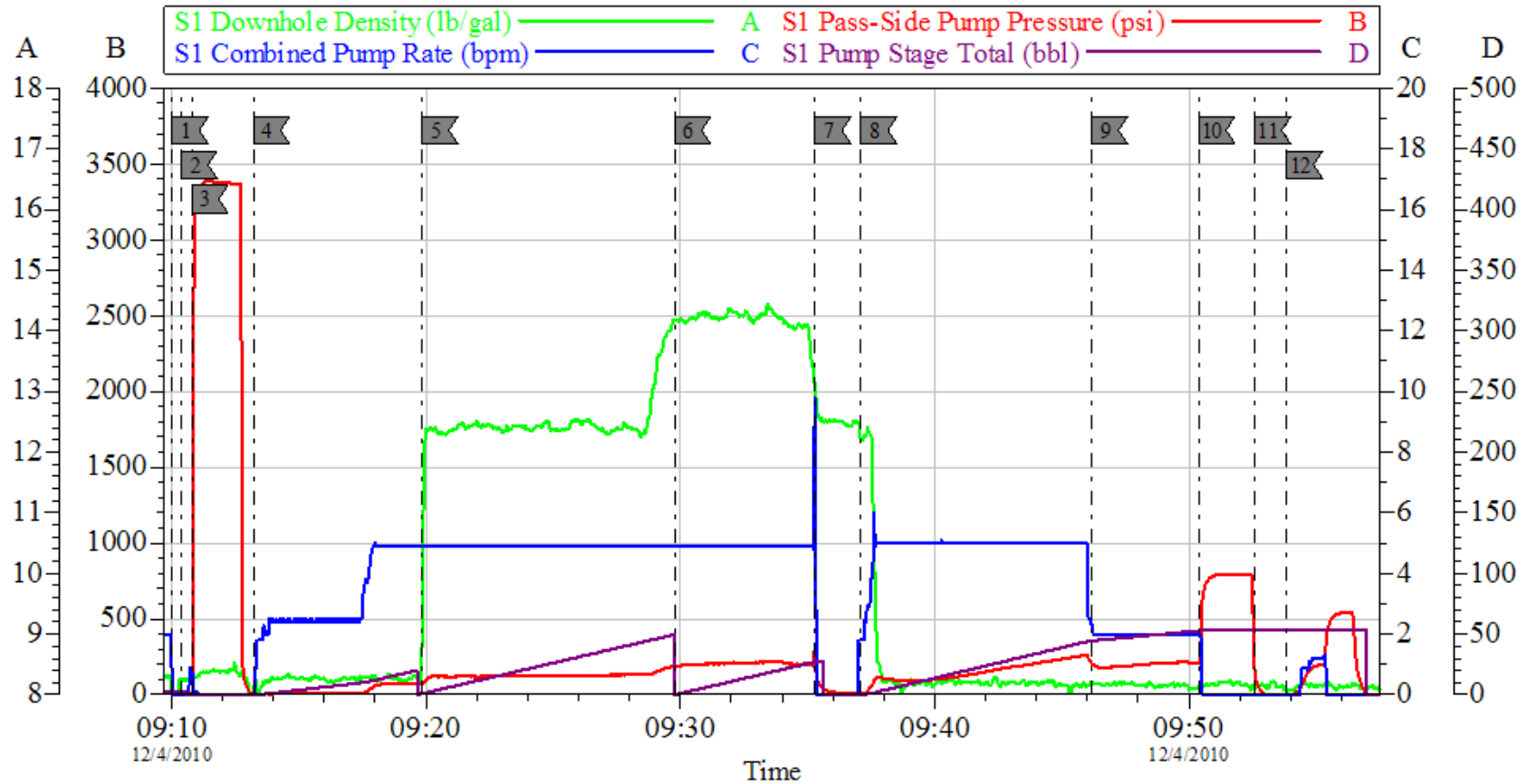
<b>Sold To #:</b> 343492	<b>Ship To #:</b> 2822755	<b>Quote #:</b>	<b>Sales Order #:</b> 7812218
<b>Customer:</b> BILL BARRETT CORPORATION E-BILL		<b>Customer Rep:</b> South, Jody	
<b>Well Name:</b> GGU JOLLEY	<b>Well #:</b> 44B-20-691	<b>API/UWI #:</b> 05-045-19796	
<b>Field:</b> MAMM CREEK	<b>City (SAP):</b> SILT	<b>County/Parish:</b> Garfield	<b>State:</b> Colorado
<b>Legal Description:</b>			
<b>Lat:</b> N 39.503 deg. OR N 39 deg. 30 min. 10.062 secs.		<b>Long:</b> W 107.573 deg. OR W -108 deg. 25 min. 36.379 secs.	
<b>Contractor:</b> Pro Petro		<b>Rig/Platform Name/Num:</b> Pro Petro	
<b>Job Purpose:</b> Cement Surface Casing			<b>Ticket Amount:</b>
<b>Well Type:</b> Development Well		<b>Job Type:</b> Cement Surface Casing	
<b>Sales Person:</b> METLI, MARSHALL		<b>Srv Supervisor:</b> KUKUS, CRAIG	<b>MBU ID Emp #:</b> 369124

Activity Description	Date/Time	Cht #	Rate bbl/min	Volume bbl		Pressure psig		Comments
				Stage	Total	Tubing	Casing	
Call Out	12/03/2010 21:00							CREW STAYED ON LOCATION
Pre-Job Safety Meeting	12/04/2010 08:50							SAFETY MEETING INVOLVING EVERYONE ON LOCATION
Start Job	12/04/2010 09:10							T.D 760 FT T.P 737.6 FT S.J 45 FT OH 12 3/8 MUD WT 8.3
Other	12/04/2010 09:10		2	2			9.0	FILL LINES
Pressure Test	12/04/2010 09:10		0.5	0.5		3500.0		PRESSURE TEST GOOD
Pump Spacer 1	12/04/2010 09:13		2	20			78.0	FRESH WATER SPACER
Pump Lead Cement	12/04/2010 09:19		5	50.8			200.0	120 SKS 12.3PPG 2.38 FT3/SK 13.77 GAL/SK
Pump Tail Cement	12/04/2010 09:29		5	30.6			220.0	120 SKS 14.2 1.43 PPG 6.85 GAL/SK / GOT RETURNS AT 25 BBL GONE ON TAIL CEMENT
Shutdown	12/04/2010 09:35							
Drop Top Plug	12/04/2010 09:35							PLUG LEFT THE PLUG CONTAINER
Pump Displacement	12/04/2010 09:37		5	54			260.0	FRESH WATER DISPLACEMENT / HAD GOOD RETURNS AND GOT CEMENT BACK TO SURFACE AT 26 BBL GONE OF DISPLACEMENT
Slow Rate	12/04/2010 09:46		2	44			208.0	

## Cementing Job Log

Activity Description	Date/Time	Cht #	Rate bbl/ min	Volume bbl		Pressure psig		Comments
				Stage	Total	Tubing	Casing	
Bump Plug	12/04/2010 09:50		2	54			700.0	PLUG LANDED AT 230 BUMP UP TO 700 PSI
Check Floats	12/04/2010 09:52			54				FLOATS HELD / BUMP BACK UP TO 200 PSI AND SHUT IN HEAD
End Job	12/04/2010 09:53							GOT AT TOTAL OF 28 BBL BACK TO SURFACE OF CEMENT
Pre-Rig Down Safety Meeting	12/04/2010 09:55							SAFETY MEETING INVOLVING THE ENTIRE CMT CREW
Rig-Down Equipment	12/04/2010 10:00							RIG DOWN /BLOW DOWN PUMP AND LINES
Safety Meeting - Departing Location	12/04/2010 10:45							SAFETY MEETING INVOLVING THE ENTIRE CMT CREW / CREW RETURNED TO YARD TO RELOAD WITH CEMENT FOR NEX T 2 JOBS
Comment	12/04/2010 11:00							THANK YOU FOR USING HALLIBURTON, CRAIG KUKUS AND CREW

# BARRETT SURFACE



Customer: BARRETT	Job Date: 04-Dec-2010	Sales Order #: 7812218	OptiCem v6.4.8 04-Dec-10 10:05
Well Description: GGU JOLLEY 44B-20-691	Job Type: SURFACE	ADC Used: YES	
Company Rep: JODY SOUTH	Cement Supervisor: CRAIG KUKUS	Elite #/Operator: ELITE 6 STEVE BORSZICH	