

---

# **BILL BARRETT CORPORATION E-BILL**

---

**GGU FED 41D-29-691  
MAMM CREEK  
Garfield County , Colorado**

**Cement Surface Casing**  
**05-Dec-2010**

**Post Job Summary**

## The Road to Excellence Starts with Safety

<b>Sold To #:</b> 343492		<b>Ship To #:</b> 2822752		<b>Quote #:</b>		<b>Sales Order #:</b> 7811553	
<b>Customer:</b> BILL BARRETT CORPORATION E-BILL				<b>Customer Rep:</b> South, Jody			
<b>Well Name:</b> GGU FED			<b>Well #:</b> 41D-29-691			<b>API/UWI #:</b> 05-045-19795	
<b>Field:</b> MAMM CREEK		<b>City (SAP):</b> SILT		<b>County/Parish:</b> Garfield			<b>State:</b> Colorado
<b>Lat:</b> N 39.503 deg. OR N 39 deg. 30 min. 10.004 secs.				<b>Long:</b> W 107.573 deg. OR W -108 deg. 25 min. 36.57 secs.			
<b>Contractor:</b> Pro Petro			<b>Rig/Platform Name/Num:</b> Pro Petro				
<b>Job Purpose:</b> Cement Surface Casing							
<b>Well Type:</b> Development Well			<b>Job Type:</b> Cement Surface Casing				
<b>Sales Person:</b> METLI, MARSHALL			<b>Srvc Supervisor:</b> KUKUS, CRAIG			<b>MBU ID Emp #:</b> 369124	

### Job Personnel

HES Emp Name	Exp Hrs	Emp #	HES Emp Name	Exp Hrs	Emp #	HES Emp Name	Exp Hrs	Emp #
BLUST, CHARLES Thomas	7	386662	BORSZICH, STEPHEN A	7	412388	KUKUS, CRAIG A	7	369124
MAGERS, MICHAEL Gerard	7	339439						

### Equipment

HES Unit #	Distance-1 way	HES Unit #	Distance-1 way	HES Unit #	Distance-1 way	HES Unit #	Distance-1 way
10297346	60 mile	10744648C	60 mile	10829469	60 mile	10998508	60 mile
11071559	60 mile						

### Job Hours

Date	On Location Hours	Operating Hours	Date	On Location Hours	Operating Hours	Date	On Location Hours	Operating Hours
12/4/10	5	0	12/5/10	2	2			

**TOTAL** Total is the sum of each column separately

### Job

Formation Name	Top	Bottom	Called Out	Date	Time	Time Zone
Formation Depth (MD)			On Location	04 - Dec - 2010	11:00	MST
Form Type		BHST	Job Started	04 - Dec - 2010	20:00	MST
Job depth MD	760. ft	Job Depth TVD	Job Completed	05 - Dec - 2010	00:11	MST
Water Depth		Wk Ht Above Floor	Departed Loc	05 - Dec - 2010	00:53	MST
Perforation Depth (MD)	From	To		05 - Dec - 2010	02:00	MST

### Well Data

Description	New / Used	Max pressure psig	Size in	ID in	Weight lbm/ft	Thread	Grade	Top MD ft	Bottom MD ft	Top TVD ft	Bottom TVD ft
-------------	------------	-------------------	---------	-------	---------------	--------	-------	-----------	--------------	------------	---------------

### Sales/Rental/3<sup>rd</sup> Party (HES)

Description	Qty	Qty uom	Depth	Supplier
PLUG,CMTG,TOP,9 5/8,HWE,8.16 MIN/9.06 MA	1	EA		

### Tools and Accessories

Type	Size	Qty	Make	Depth	Type	Size	Qty	Make	Depth	Type	Size	Qty	Make
Guide Shoe					Packer					Top Plug	9 5/8	1	HES
Float Shoe					Bridge Plug					Bottom Plug			
Float Collar					Retainer					SSR plug set			
Insert Float										Plug Container	9 5/8	1	HES
Stage Tool										Centralizers			

### Miscellaneous Materials

Gelling Agt	Conc	Surfactant	Conc	Acid Type	Qty	Conc	%
Treatment Fld	Conc	Inhibitor	Conc	Sand Type	Size		Qty

### Fluid Data

Stage/Plug #: 1									
Fluid #	Stage Type	Fluid Name	Qty	Qty uom	Mixing Density lbm/gal	Yield ft3/sk	Mix Fluid Gal/sk	Rate bbl/min	Total Mix Fluid Gal/sk

Stage/Plug #: 1									
Fluid #	Stage Type	Fluid Name	Qty	Qty uom	Mixing Density lbm/gal	Yield ft <sup>3</sup> /sk	Mix Fluid Gal/sk	Rate bbl/min	Total Mix Fluid Gal/sk
1	WATER SPACER		20.00	bbl	.	.0	.0	.0	
2	Lead Cement	VERSACEM (TM) SYSTEM (452010)	120.0	sacks	12.3	2.38	13.77		13.77
	13.77 Gal	FRESH WATER							
3	Tail Cement	SWIFTCEM (TM) SYSTEM (452990)	120.0	sacks	14.2	1.43	6.85		6.85
	6.85 Gal	FRESH WATER							
4	DISPLACEMENT		54.00	bbl	.	.0	.0	.0	
Calculated Values		Pressures		Volumes					
Displacement	54	Shut In: Instant		Lost Returns	0	Cement Slurry		Pad	
Top Of Cement	SURFACE	5 Min		Cement Returns	29	Actual Displacement		Treatment	
Frac Gradient		15 Min		Spacers	20	Load and Breakdown		Total Job	156
Rates									
Circulating		Mixing	5	Displacement	5	Avg. Job		5	
Cement Left In Pipe	Amount	43.43 ft	Reason	Shoe Joint					
Frac Ring # 1 @	ID	Frac ring # 2 @	ID	Frac Ring # 3 @	ID	Frac Ring # 4 @	ID		
The Information Stated Herein Is Correct				Customer Representative Signature					

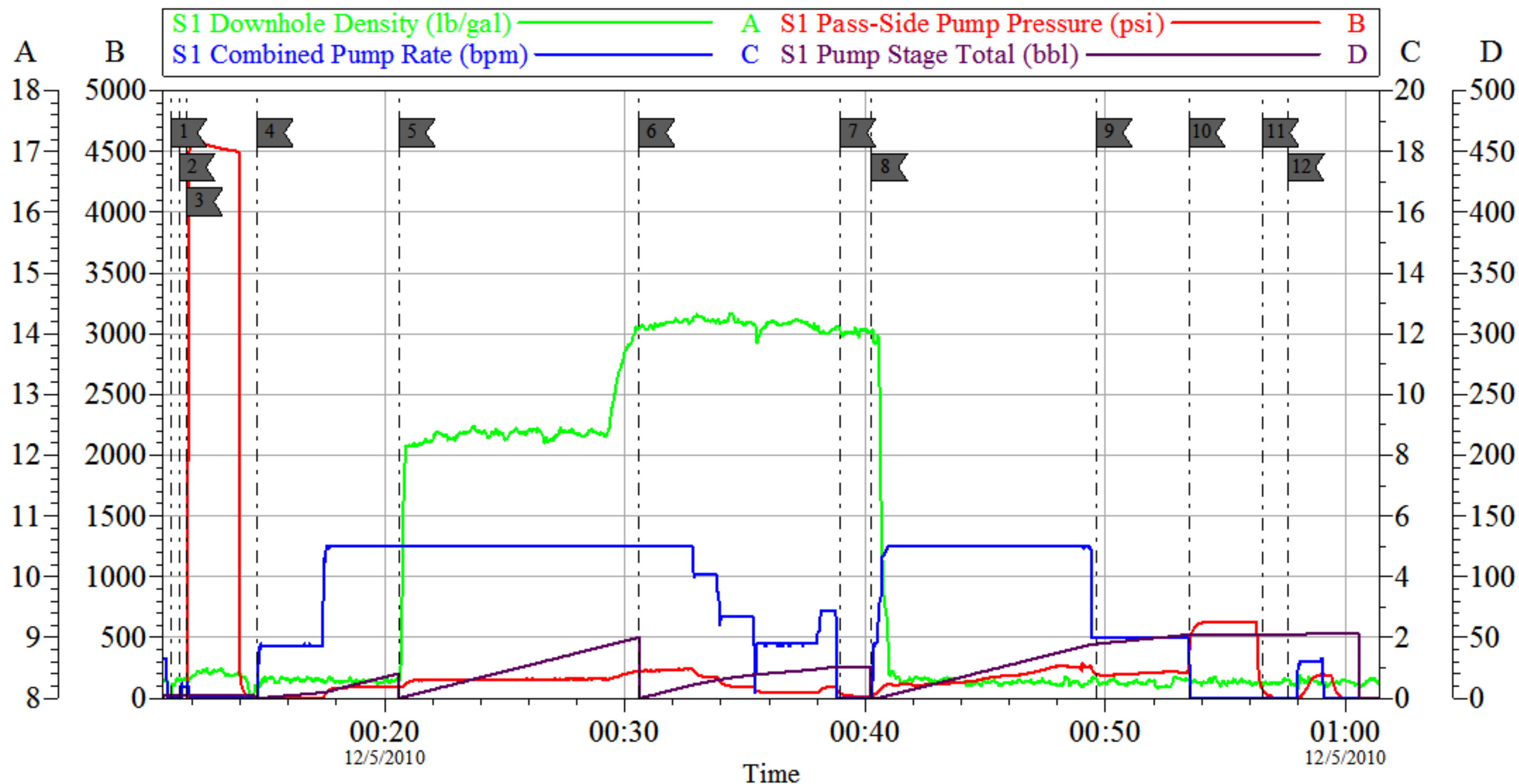
*The Road to Excellence Starts with Safety*

<b>Sold To #:</b> 343492	<b>Ship To #:</b> 2822752	<b>Quote #:</b>	<b>Sales Order #:</b> 7811553
<b>Customer:</b> BILL BARRETT CORPORATION E-BILL		<b>Customer Rep:</b> South, Jody	
<b>Well Name:</b> GGU FED	<b>Well #:</b> 41D-29-691	<b>API/UWI #:</b> 05-045-19795	
<b>Field:</b> MAMM CREEK	<b>City (SAP):</b> SILT	<b>County/Parish:</b> Garfield	<b>State:</b> Colorado
<b>Legal Description:</b>			
<b>Lat:</b> N 39.503 deg. OR N 39 deg. 30 min. 10.004 secs.		<b>Long:</b> W 107.573 deg. OR W -108 deg. 25 min. 36.57 secs.	
<b>Contractor:</b> Pro Petro		<b>Rig/Platform Name/Num:</b> Pro Petro	
<b>Job Purpose:</b> Cement Surface Casing			<b>Ticket Amount:</b>
<b>Well Type:</b> Development Well		<b>Job Type:</b> Cement Surface Casing	
<b>Sales Person:</b> METLI, MARSHALL		<b>Srvc Supervisor:</b> KUKUS, CRAIG	<b>MBU ID Emp #:</b> 369124

Activity Description	Date/Time	Cht #	Rate bbl/min	Volume bbl		Pressure psig		Comments
				Stage	Total	Tubing	Casing	
Call Out	12/04/2010 11:00							CREW RETURNED TO YARD TO RELOAD WITH CEMENT
Depart Yard Safety Meeting	12/04/2010 17:00							SAFETY MEETING INVOLVING THE ENTIRE CMT CREW
Arrive At Loc	12/04/2010 20:00							RIG WAS STILL DRILLING
Assessment Of Location Safety Meeting	12/04/2010 20:10							ASSESSMENT OF LOCATION INVOLVING THE ENTIRE CMT CREW
Rig-Up Equipment	12/04/2010 20:43							RIGGED UP HEAD TO NEW WELL
Pre-Rig Up Safety Meeting	12/04/2010 22:10							SPOTTED EQUIPMENT RIG UP WAS ALREADY DONE
Pre-Job Safety Meeting	12/04/2010 23:55							SAFETY MEETING INVOLVING EVERYONE ON LOCATION
Start Job	12/05/2010 00:11							T.D 760 FT T.P 738.02 FT S.J 43.43 FT OH 12 3/8 MUD WT 8.3
Other	12/05/2010 00:11		2	2			8.0	FILL LINES
Pressure Test	12/05/2010 00:11		0.5			4500.0		PRESSURE TEST GOOD
Pump Spacer 1	12/05/2010 00:14		5	20			140.0	FRESH WATER SPACER
Pump Lead Cement	12/05/2010 00:20		5	50.8			225.0	PUMP 120 SKS LEAD CEMENT AT 12.3 PPG 2.38 Y 13.77 GAL/SKS
Pump Tail Cement	12/05/2010 00:30		5	30.6			200.0	PUMP 120 SKS TAIL CEMENT AT 14.2 PPG 1.43 Y 6.85 GAL/SKS

Activity Description	Date/Time	Cht #	Rate bbl/ min	Volume bbl		Pressure psig		Comments
				Stage	Total	Tubing	Casing	
Shutdown	12/05/2010 00:38							GOT RETURNS AT 16 BBL GONE ON TAIL CEMENT
Drop Top Plug	12/05/2010 00:39							PLUG LEFT THE PLUG CONTAINER
Pump Displacement	12/05/2010 00:40		5	54.5			270.0	PUMP FRESH WATER DISPLACEMENT/ GOT CEMENT BACK TO SURFACE AT 25 BBL GONE OF DIASPLACEMENT
Slow Rate	12/05/2010 00:49		2	44			209.0	SLOW RATE TO 2BBL MIN LAST 10 BBL
Bump Plug	12/05/2010 00:53		2	54			640.0	PLUG LANDEDAT 230 PSI BUMPED UP TO 640 PSI
Check Floats	12/05/2010 00:56							FLOATS HELD/ GOT 1 BBL BACK TO TANKS / BUMP UP TO 200 PSI SHUT IN HEAD
End Job	12/05/2010 00:57							GOT 29 BBL CEMENT BACK TO SURFACE
Pre-Rig Down Safety Meeting	12/05/2010 01:00							SAFETY MEETING INVOLVING THE ENTIRE CMT CREW
Rig-Down Equipment	12/05/2010 01:10							BROKE APART LINES AND BLEW DOWN PUMP AND LINES
Safety Meeting - Departing Location	12/05/2010 02:00							CREW STAYED ON LOC FOR THE NEXT HOLE
Comment	12/05/2010 02:00							THANK YOU FOR USING HALLIBURTON, CRAIG KUKUS AND CREW

# BARRETT SURFACE



Customer: BARRETT  
Well Description: GGU FED 41D-29-691  
Company Rep: JODY SOUTH

Job Date: 04-Dec-2010  
Job Type: SURFACE  
Cement Supervisor: CRAIG KUKUS

Sales Order #: 7811553  
ADC Used: YES  
Elite #/Operator: ELTE 6 STEVE BORSZICH

OptiCem v6.4.8  
05-Dec-10 01:14