

---

# **BILL BARRETT CORPORATION E-BILL**

---

**GGU FED 42C-29-691  
MAMM CREEK  
Garfield County , Colorado**

**Cement Surface Casing**  
**10-Dec-2010**

**Post Job Summary**

## The Road to Excellence Starts with Safety

Sold To #: 343492		Ship To #: 2822753		Quote #:		Sales Order #: 7811918	
Customer: BILL BARRETT CORPORATION E-BILL				Customer Rep: South, Jody			
Well Name: GGU FED			Well #: 42C-29-691			API/UWI #: 05-045-19800	
Field: MAMM CREEK		City (SAP): SILT		County/Parish: Garfield			State: Colorado
Lat: N 39.503 deg. OR N 39 deg. 30 min. 9.911 secs.				Long: W 107.573 deg. OR W -108 deg. 25 min. 36.523 secs.			
Contractor: Pro Petro			Rig/Platform Name/Num: Pro Petro				
Job Purpose: Cement Surface Casing							
Well Type: Development Well			Job Type: Cement Surface Casing				
Sales Person: METLI, MARSHALL			Srvs Supervisor: MAGERS, MICHAEL			MBU ID Emp #: 339439	

### Job Personnel

HES Emp Name	Exp Hrs	Emp #	HES Emp Name	Exp Hrs	Emp #	HES Emp Name	Exp Hrs	Emp #
ANGLESTEIN, TROY Edward WM	14	436099	BORSZICH, STEPHEN A	14	412388	LOPEZ, GERALD Wayne	14	479828
MAGERS, MICHAEL Gerard	14	339439						

### Equipment

HES Unit #	Distance-1 way	HES Unit #	Distance-1 way	HES Unit #	Distance-1 way	HES Unit #	Distance-1 way
11259886	120 MILES	10998508	120 MILES	10744648	120 MILES	10741123	10713212

### Job Hours

Date	On Location Hours	Operating Hours	Date	On Location Hours	Operating Hours	Date	On Location Hours	Operating Hours
12/10/2010	14	1						

<b>TOTAL</b>	Total is the sum of each column separately							
--------------	--	--	--	--	--	--	--	--

### Job

Formation Name	Top	Bottom	Called Out	Date	Time	Time Zone
Formation Depth (MD)			On Location	10 - Dec - 2010	00:01	MST
Form Type		BHST	Job Started	10 - Dec - 2010	12:47	MST
Job depth MD	845. ft	Job Depth TVD	Job Completed	10 - Dec - 2010	13:38	MST
Water Depth		Wk Ht Above Floor	Departed Loc			
Perforation Depth (MD)	From	To				

### Well Data

Description	New / Used	Max pressure psig	Size in	ID in	Weight lbm/ft	Thread	Grade	Top MD ft	Bottom MD ft	Top TVD ft	Bottom TVD ft
-------------	------------	-------------------	---------	-------	---------------	--------	-------	-----------	--------------	------------	---------------

### Sales/Rental/3<sup>rd</sup> Party (HES)

Description	Qty	Qty uom	Depth	Supplier
PLUG,CMTG,TOP,9 5/8,HWE,8.16 MIN/9.06 MA	1	EA		

### Tools and Accessories

Type	Size	Qty	Make	Depth	Type	Size	Qty	Make	Depth	Type	Size	Qty	Make
Guide Shoe					Packer					Top Plug	9.625	1	HES
Float Shoe					Bridge Plug					Bottom Plug			
Float Collar					Retainer					SSR plug set			
Insert Float										Plug Container	9.625	1	HES
Stage Tool										Centralizers			

### Miscellaneous Materials

Gelling Agt	Conc	Surfactant	Conc	Acid Type	Qty	Conc	%
Treatment Fld	Conc	Inhibitor	Conc	Sand Type	Size	Qty	

Fluid Data									
Stage/Plug #: 1									
Fluid #	Stage Type	Fluid Name	Qty	Qty uom	Mixing Density lbm/gal	Yield ft <sup>3</sup> /sk	Mix Fluid Gal/sk	Rate bbl/min	Total Mix Fluid Gal/sk
1	WATER SPACER		20.00	bbl	.	.0	.0	.0	
2	Lead Cement	VERSACEM (TM) SYSTEM (452010)	120.0	sacks	12.3	2.38	13.77		13.77
	13.77 Gal	FRESH WATER							
3	Tail Cement	SWIFTCEM (TM) SYSTEM (452990)	120.0	sacks	14.2	1.43	6.85		6.85
	6.85 Gal	FRESH WATER							
4	DISPLACEMENT		61.00	bbl	.	.0	.0	.0	
Calculated Values		Pressures		Volumes					
Displacement	60.5	Shut In: Instant		Lost Returns	0	Cement Slurry	81.5	Pad	
Top Of Cement	SURFACE	5 Min		Cement Returns	20	Actual Displacement	60.5	Treatment	
Frac Gradient		15 Min		Spacers	20	Load and Breakdown		Total Job	162
Rates									
Circulating		Mixing		Displacement		Avg. Job			
Cement Left In Pipe	Amount	44.9 ft	Reason	Shoe Joint					
Frac Ring # 1 @	ID	Frac ring # 2 @	ID	Frac Ring # 3 @	ID	Frac Ring # 4 @	ID		
The Information Stated Herein Is Correct				Customer Representative Signature					

*The Road to Excellence Starts with Safety*

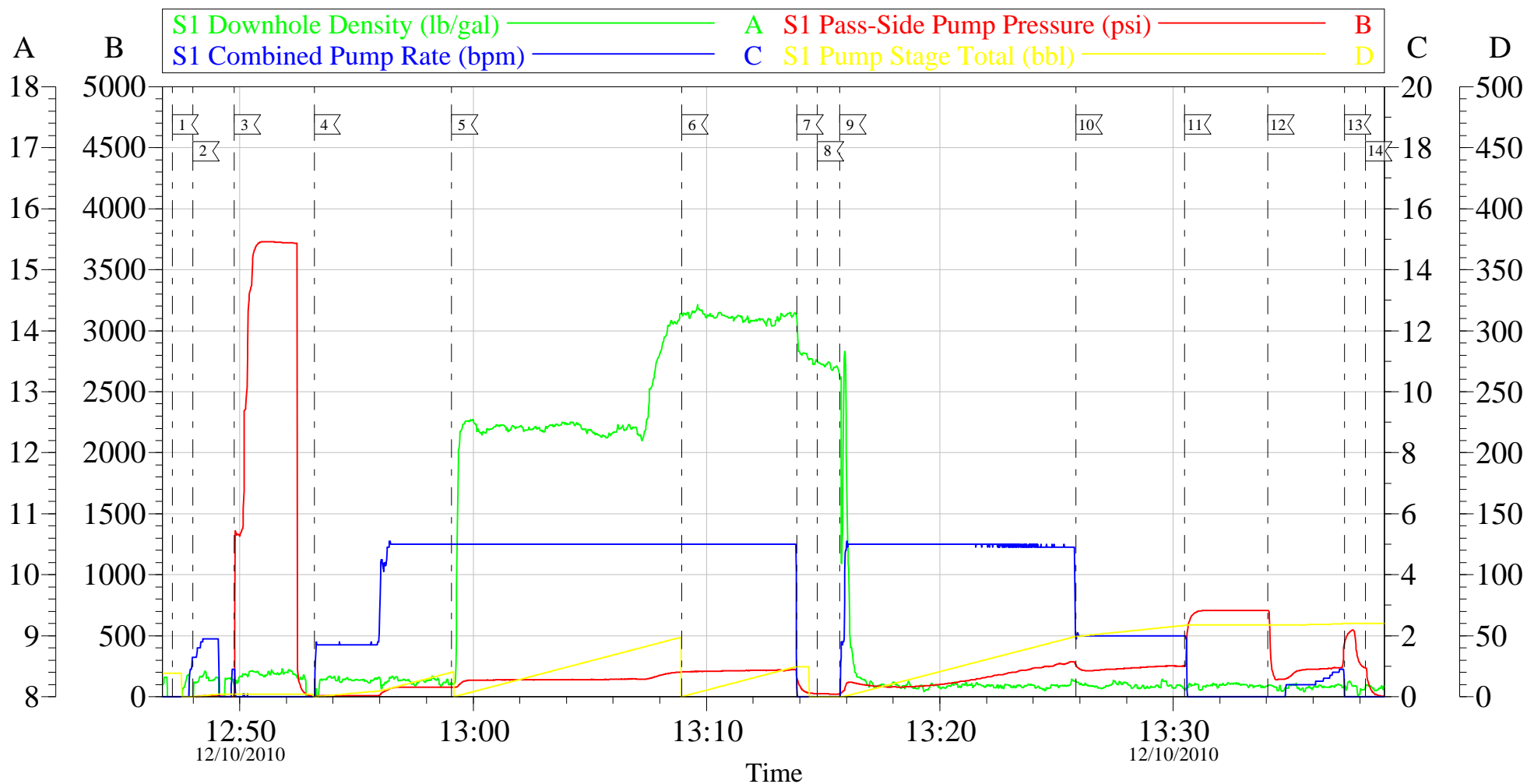
<b>Sold To #:</b> 343492		<b>Ship To #:</b> 2822753		<b>Quote #:</b>		<b>Sales Order #:</b> 7811918	
<b>Customer:</b> BILL BARRETT CORPORATION E-BILL				<b>Customer Rep:</b> South, Jody			
<b>Well Name:</b> GGU FED			<b>Well #:</b> 42C-29-691			<b>API/UWI #:</b> 05-045-19800	
<b>Field:</b> MAMM CREEK		<b>City (SAP):</b> SILT		<b>County/Parish:</b> Garfield			<b>State:</b> Colorado
<b>Legal Description:</b>							
<b>Lat:</b> N 39.503 deg. OR N 39 deg. 30 min. 9.911 secs.				<b>Long:</b> W 107.573 deg. OR W -108 deg. 25 min. 36.523 secs.			
<b>Contractor:</b> Pro Petro			<b>Rig/Platform Name/Num:</b> Pro Petro				
<b>Job Purpose:</b> Cement Surface Casing						<b>Ticket Amount:</b>	
<b>Well Type:</b> Development Well			<b>Job Type:</b> Cement Surface Casing				
<b>Sales Person:</b> METLI, MARSHALL			<b>Srvc Supervisor:</b> MAGERS, MICHAEL			<b>MBU ID Emp #:</b> 339439	

Activity Description	Date/Time	Cht #	Rate bbl/min	Volume bbl		Pressure psig		Comments
				Stage	Total	Tubing	Casing	
Arrive At Loc	12/10/2010 00:01							HES ALREADY ON LOCATION
Pre-Rig Up Safety Meeting	12/10/2010 12:15							
Rig-Up Equipment	12/10/2010 12:30							TD-845 TP-827.1 SJ-44 9 MW-8.33 CASING-9 5/8 36# J-55 OH-12 3/8" PLUG CONTAINER-B 0679
Safety Huddle	12/10/2010 12:40							HES AND RIG CREW ALL PRESENT
Start Job	12/10/2010 12:47							
Other	12/10/2010 12:48		2	2			11.0	FILL LINES
Pressure Test	12/10/2010 12:49		0.5	0.5			3574.0	PSI TEST OK
Pump Spacer 1	12/10/2010 12:53		5	20			77.0	FRESH WATER
Pump Lead Cement	12/10/2010 12:59		5	50.9			148.0	120 SKS 12.3 PPG 2.38 FT3/SK 13.77 GAL/SK
Pump Tail Cement	12/10/2010 13:08		5	30.6			217.0	120 SKS 14.2 PPG 1.43 FT3/SK 6.85 GAL/SK GOT RETURNS AT 24 BBLS INTO TAIL CEMENT
Shutdown	12/10/2010 13:13							
Drop Plug	12/10/2010 13:14							PLUG AWAY NO PROBLEMS
Pump Displacement	12/10/2010 13:15		5	60.5			282.0	FRESH WATER
Slow Rate	12/10/2010 13:25		2	50			215.0	GOT CEMENT TO SURFACE AT 40 BBLS/20 BBLS TO SURFACE TOTAL

Activity Description	Date/Time	Cht #	Rate bbl/ min	Volume bbl		Pressure psig		Comments
				Stage	Total	Tubing	Casing	
Bump Plug	12/10/2010 13:30		2	60.5			275.0	PLUG BUMPED
Check Floats	12/10/2010 13:34			60.5			706.0	FLOATS HELD/GOT 1 BBL BACK INTO DISPLACEMENT TANK
Resume	12/10/2010 13:37		0.5	0.5			300.0	REBUMP PLUG
Shut In Well	12/10/2010 13:38						300.0	SHUT IN WELL WITH 300 PSI
End Job	12/10/2010 13:39							THANKS FOR USING HES AND THE CREW OF MIKE MAGERS

# BILL BARRETT PRO PETRO

## SURFACE



Customer: BILL BARRETT  
Well Description: GGU FED 42C-29-691  
Company Rep: JODY SOUTH

Job Date: 10-Dec-2010  
Job Type: SURFACE  
Cement Supervisor: MIKE MAGERS

Sales Order #: 7811918  
ADC Used: YES  
Elite #: 6 STEVE BORSZICH

OptiCem v6.3.4  
10-Dec-10 13:56