

---

# **BILL BARRETT CORPORATION E-BILL**

---

**GGU FED 41C-29-691  
MAMM CREEK  
Garfield County , Colorado**

**Cement Surface Casing  
05-Dec-2010**

**Post Job Report**

## The Road to Excellence Starts with Safety

Sold To #: 343492	Ship To #: 2822751	Quote #:	Sales Order #: 7811570
Customer: BILL BARRETT CORPORATION E-BILL	Customer Rep: South, Jody		
Well Name: GGU FED	Well #: 41C-29-691	API/UWI #: 05-045-19806	
Field: MAMM CREEK	City (SAP): SILT	County/Parish: Garfield	State: Colorado
Lat: N 39.503 deg. OR N 39 deg. 30 min. 9.947 secs.	Long: W 107.573 deg. OR W -108 deg. 25 min. 36.761 secs.		
Contractor: Pro Petro	Rig/Platform Name/Num: Pro Petro		
Job Purpose: Cement Surface Casing			
Well Type: Development Well	Job Type: Cement Surface Casing		
Sales Person: METLI, MARSHALL	Srvc Supervisor: KUKUS, CRAIG	MBU ID Emp #: 369124	

## Job Personnel

HES Emp Name	Exp Hrs	Emp #	HES Emp Name	Exp Hrs	Emp #	HES Emp Name	Exp Hrs	Emp #
BLUST, CHARLES Thomas	19	386662	BORSZICH, STEPHEN A	19	412388	KUKUS, CRAIG A	19	369124
MAGERS, MICHAEL Gerard	19	339439						

## Equipment

HES Unit #	Distance-1 way	HES Unit #	Distance-1 way	HES Unit #	Distance-1 way	HES Unit #	Distance-1 way
10713212	60 mile	10741123	60 mile	10744648C	60 mile	10829469	60 mile
10998508	60 mile						

## Job Hours

Date	On Location Hours	Operating Hours	Date	On Location Hours	Operating Hours	Date	On Location Hours	Operating Hours
12/5/10	19	2						

TOTAL	Total is the sum of each column separately							
-------	--	--	--	--	--	--	--	--

## Job

Formation Name	Top	Bottom	Called Out	Date	Time	Time Zone
Formation Depth (MD)			On Location	05 - Dec - 2010	02:30	MST
Form Type		BHST	Job Started	05 - Dec - 2010	20:32	MST
Job depth MD	760. ft	Job Depth TVD	760. ft	Job Completed	05 - Dec - 2010	21:12
Water Depth		Wk Ht Above Floor	4. ft	Departed Loc	05 - Dec - 2010	22:30
Perforation Depth (MD)	From	To				

## Well Data

Description	New / Used	Max pressure psig	Size in	ID in	Weight lbm/ft	Thread	Grade	Top MD ft	Bottom MD ft	Top TVD ft	Bottom TVD ft
-------------	------------	-------------------	---------	-------	---------------	--------	-------	-----------	--------------	------------	---------------

Sales/Rental/3<sup>rd</sup> Party (HES)

Description	Qty	Qty uom	Depth	Supplier
PLUG,CMTG,TOP,9 5/8,HWE,8.16 MIN/9.06 MA	1	EA		

## Tools and Accessories

Type	Size	Qty	Make	Depth	Type	Size	Qty	Make	Depth	Type	Size	Qty	Make
Guide Shoe					Packer					Top Plug	9 5/8	1	HES
Float Shoe					Bridge Plug					Bottom Plug			
Float Collar					Retainer					SSR plug set			
Insert Float										Plug Container	9 5/8	1	HES
Stage Tool										Centralizers			

## Miscellaneous Materials

Gelling Agt	Conc	Surfactant	Conc	Acid Type	Qty	Conc	%
Treatment Fld	Conc	Inhibitor	Conc	Sand Type	Size		Qty

## Fluid Data

Stage/Plug #: 1	Fluid #	Stage Type	Fluid Name	Qty	Qty uom	Mixing Density lbm/gal	Yield ft3/sk	Mix Fluid Gal/sk	Rate bbl/min	Total Mix Fluid Gal/sk
-----------------	---------	------------	------------	-----	---------	------------------------	--------------	------------------	--------------	------------------------

Stage/Plug #: 1									
Fluid #	Stage Type	Fluid Name	Qty	Qty uom	Mixing Density lbm/gal	Yield ft <sup>3</sup> /sk	Mix Fluid Gal/sk	Rate bbl/min	Total Mix Fluid Gal/sk
1	WATER SPACER		20.00	bbl	.	.0	.0	.0	
2	Lead Cement	VERSACEM (TM) SYSTEM (452010)	120.0	sacks	12.3	2.38	13.77		13.77
	13.77 Gal	FRESH WATER							
3	Tail Cement	SWIFTCEM (TM) SYSTEM (452990)	120.0	sacks	14.2	1.43	6.85		6.85
	6.85 Gal	FRESH WATER							
4	DISPLACEMENT		55.00	bbl	.	.0	.0	.0	
Calculated Values		Pressures		Volumes					
Displacement	55	Shut In: Instant		Lost Returns	0	Cement Slurry	81.4	Pad	
Top Of Cement	SURFACE	5 Min		Cement Returns	27	Actual Displacement	55	Treatment	
Frac Gradient		15 Min		Spacers	20	Load and Breakdown		Total Job	157
Rates									
Circulating		Mixing	5	Displacement	5	Avg. Job		5	
Cement Left In Pipe	Amount	44.85 ft	Reason	Shoe Joint					
Frac Ring # 1 @	ID	Frac ring # 2 @	ID	Frac Ring # 3 @	ID	Frac Ring # 4 @	ID		
The Information Stated Herein Is Correct				Customer Representative Signature					

*The Road to Excellence Starts with Safety*

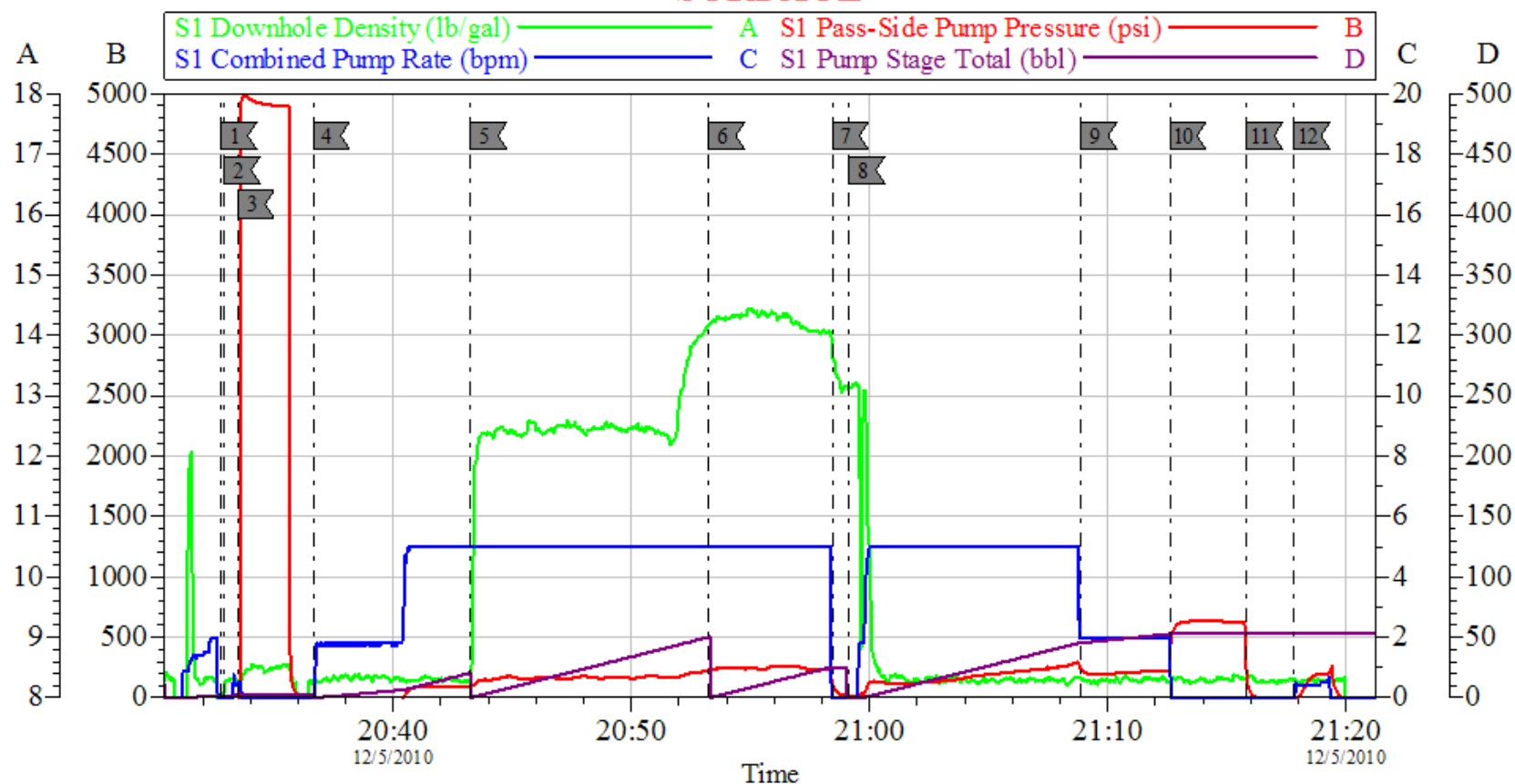
<b>Sold To #:</b> 343492	<b>Ship To #:</b> 2822751	<b>Quote #:</b>	<b>Sales Order #:</b> 7811570
<b>Customer:</b> BILL BARRETT CORPORATION E-BILL		<b>Customer Rep:</b> South, Jody	
<b>Well Name:</b> GGU FED	<b>Well #:</b> 41C-29-691	<b>API/UWI #:</b> 05-045-19806	
<b>Field:</b> MAMM CREEK	<b>City (SAP):</b> SILT	<b>County/Parish:</b> Garfield	<b>State:</b> Colorado
<b>Legal Description:</b>			
<b>Lat:</b> N 39.503 deg. OR N 39 deg. 30 min. 9.947 secs.		<b>Long:</b> W 107.573 deg. OR W -108 deg. 25 min. 36.761 secs.	
<b>Contractor:</b> Pro Petro		<b>Rig/Platform Name/Num:</b> Pro Petro	
<b>Job Purpose:</b> Cement Surface Casing			<b>Ticket Amount:</b>
<b>Well Type:</b> Development Well		<b>Job Type:</b> Cement Surface Casing	
<b>Sales Person:</b> METLI, MARSHALL		<b>Srvc Supervisor:</b> KUKUS, CRAIG	<b>MBU ID Emp #:</b> 369124

Activity Description	Date/Time	Cht #	Rate bbl/min	Volume bbl		Pressure psig		Comments
				Stage	Total	Tubing	Casing	
Call Out	12/05/2010 02:30							CREW STAYED ON LOCATION FOR NEXT JOB
Assessment Of Location Safety Meeting	12/05/2010 02:30							ASSESSMENT OF LOCATION INVOLVING THE ENTIRE CMT CREW
Pre-Rig Up Safety Meeting	12/05/2010 19:45							SAFETY MEETING INVOLVING THE ENTIRE CMT CREW
Rig-Up Equipment	12/05/2010 20:00							RIG UO HEAD AND IRON TO NEXT WELL
Pre-Job Safety Meeting	12/05/2010 20:15							SAFETY MEETING INVOLVING EVERYONE ON LOCATION
Start Job	12/05/2010 20:32							T.D 760 FT T.P 744.90 FT S.J 44.85 FT OH 12 3/8 PIPE 9 5/8 36# MUD WT 8.3
Other	12/05/2010 20:32		2	2			12.0	FILL LINES
Pressure Test	12/05/2010 20:33		0.5			5000.0		PRESSURE TEST GOOD
Pump Spacer 1	12/05/2010 20:36		5	20			108.0	FRESH WATER SPACER
Pump Lead Cement	12/05/2010 20:43		5	50.8			245.0	120 SKS LEAD PUMP AT 12.3 PPG 2.38 Y 13.77 GAL/SKS
Pump Tail Cement	12/05/2010 20:53		5	30.6			260.0	120 SKS PUMP AT 14.2 PPG 1.43 Y 6.86 GAL/SKS /GOT RETURNS WITH 16 BBL TAIL CEMENT GONE

## Cementing Job Log

Activity Description	Date/Time	Cht #	Rate bbl/ min	Volume bbl		Pressure psig		Comments
				Stage	Total	Tubing	Casing	
Shutdown	12/05/2010 20:58							
Drop Top Plug	12/05/2010 20:58							PLUG LEFT THE PLUG CONTAINER
Pump Displacement	12/05/2010 20:59		5	55			302.0	PUMP FRESH WATER DISPLACEMENT/GOT CEMENT BACK AT 28 BBL GONE
Slow Rate	12/05/2010 21:08		2	45			240.0	SLOW RATE TO 2BBL MIN LAST 10 BBLS
Bump Plug	12/05/2010 21:12		2	55			650.0	PLUG LANDED AT 215 PSI BUMPED UP TO 650 PSI
Check Floats	12/05/2010 21:15							FLOATS HELD / BUMPED BACK UP TO 220 PSI AND SHUT IN HEAD
End Job	12/05/2010 21:17							GOT A TOTAL OF 27 BBL CEMENT BACK TO SURFACE
Pre-Rig Down Safety Meeting	12/05/2010 21:20							SAFETY MEETING INVOLVING THE ENTIRE CMT CREW
Rig-Down Equipment	12/05/2010 21:30							
Safety Meeting - Departing Location	12/05/2010 22:20							SAFETY MEETING INVOLVING THE ENTIRE CMT CREW / CREW RETURNED TO YARD TO RELOAD WITH CEMENT FOR NEXT 2 WELLS
Comment	12/05/2010 22:30							THANK YOU FOR USING HALLIBURTON, CRAIG KUKUS AND CREW

# BARRETT SURFACE



Local Event Log					
1	START JOB	20:32:46	2	PRIME LINES	20:32:54
3	PRESSURE TEST	20:33:30	4	PUMP H2O SPACER	20:36:40
5	PUMP LEAD CEMENT	20:43:15	6	PUMP TAIL CEMENT	20:53:15
7	SHUT DOWN/DROP PLUG	20:58:26	8	PUMP H2O DISPLACEMENT	20:59:08
9	SLOW RATE	21:08:53	10	BUMP PLUG	21:12:36
11	CHECK FLOATS	21:15:51	12	END JOB	21:17:50

Customer: BARRETT	Job Date: 05-Dec-2010	Sales Order #: 7811570
Well Description: GGU41C-29-691	Job Type: SURFACE	ADC Used: YES
Company Rep: JODY SOUTH	Cement Supervisor: CRAIG KUKUS	Elite #/Operator: ELITE 6 STEVE BORSZICH

OptiCem v6.4.8  
05-Dec-10 21:33