
BILL BARRETT CORPORATION E-BILL

**GGU FED 41B-29-691
MAMM CREEK
Garfield County , Colorado**

Cement Surface Casing
11-Dec-2010

Post Job Summary

The Road to Excellence Starts with Safety

Sold To #: 343492	Ship To #: 2822750	Quote #:	Sales Order #: 7811556
Customer: BILL BARRETT CORPORATION E-BILL	Customer Rep: South, Jodi		
Well Name: GGU FED	Well #: 41B-29-691	API/UWI #: 05-045-19799	
Field: MAMM CREEK	City (SAP): SILT	County/Parish: Garfield	State: Colorado
Lat: N 39.503 deg. OR N 39 deg. 30 min. 9.853 secs.	Long: W 107.573 deg. OR W -108 deg. 25 min. 36.714 secs.		
Contractor: Pro Petro	Rig/Platform Name/Num: Pro Petro		
Job Purpose: Cement Surface Casing			
Well Type: Development Well	Job Type: Cement Surface Casing		
Sales Person: METLI, MARSHALL	Srv Supervisor: MAGERS, MICHAEL	MBU ID Emp #: 339439	

Job Personnel

HES Emp Name	Exp Hrs	Emp #	HES Emp Name	Exp Hrs	Emp #	HES Emp Name	Exp Hrs	Emp #
ANGLESTEIN, TROY Edward WM	15	436099	BORSZICH, STEPHEN A	15	412388	LOPEZ, GERALD Wayne	15	479828
MAGERS, MICHAEL Gerard	15	339439						

Equipment

HES Unit #	Distance-1 way	HES Unit #	Distance-1 way	HES Unit #	Distance-1 way	HES Unit #	Distance-1 way
11259886	120 MILES	10998508	120 MILES	10744648	120 MILES	10897891	10867425

Job Hours

Date	On Location Hours	Operating Hours	Date	On Location Hours	Operating Hours	Date	On Location Hours	Operating Hours
12/10/2010	9	0	12/11/2010	6	1			

TOTAL Total is the sum of each column separately

Job

Formation Name	Top	Bottom	Called Out	Date	Time	Time Zone
Formation Depth (MD)			On Location	10 - Dec - 2010	15:00	MST
Form Type		BHST	Job Started	10 - Dec - 2010	15:00	MST
Job depth MD	835. ft	Job Depth TVD	Job Completed	11 - Dec - 2010	03:27	MST
Water Depth		Wk Ht Above Floor	Departed Loc	11 - Dec - 2010	04:19	MST
Perforation Depth (MD)	From	To			05:00	MST

Well Data

Description	New / Used	Max pressure psig	Size in	ID in	Weight lbm/ft	Thread	Grade	Top MD ft	Bottom MD ft	Top TVD ft	Bottom TVD ft
-------------	------------	-------------------	---------	-------	---------------	--------	-------	-----------	--------------	------------	---------------

Sales/Rental/3rd Party (HES)

Description	Qty	Qty uom	Depth	Supplier
PLUG,CMTG,TOP,9 5/8,HWE,8.16 MIN/9.06 MA	1	EA		

Tools and Accessories

Type	Size	Qty	Make	Depth	Type	Size	Qty	Make	Depth	Type	Size	Qty	Make
Guide Shoe					Packer					Top Plug	9.625	1	HES
Float Shoe					Bridge Plug					Bottom Plug			
Float Collar					Retainer					SSR plug set			
Insert Float										Plug Container	9.625	1	HES
Stage Tool										Centralizers			

Miscellaneous Materials

Gelling Agt	Conc	Surfactant	Conc	Acid Type	Qty	Conc	%
Treatment Fld	Conc	Inhibitor	Conc	Sand Type	Size	Qty	

Fluid Data										
Stage/Plug #: 1										
Fluid #	Stage Type	Fluid Name	Qty	Qty uom	Mixing Density lbm/gal	Yield ft ³ /sk	Mix Fluid Gal/sk	Rate bbl/min	Total Mix Fluid Gal/sk	
1	WATER SPACER		20.00	bbl	.	.0	.0	.0		
2	Lead Cement	VERSACEM (TM) SYSTEM (452010)	120.0	sacks	12.3	2.38	13.77		13.77	
	13.77 Gal	FRESH WATER								
3	Tail Cement	SWIFTCEM (TM) SYSTEM (452990)	120.0	sacks	14.2	1.43	6.85		6.85	
	6.85 Gal	FRESH WATER								
4	DISPLACEMENT		60.00	bbl	.	.0	.0	.0		
Calculated Values		Pressures		Volumes						
Displacement	59.8	Shut In: Instant		Lost Returns	0	Cement Slurry	81.5	Pad		
Top Of Cement	SURFACE	5 Min		Cement Returns	8	Actual Displacement		Treatment		
Frac Gradient		15 Min		Spacers	20	Load and Breakdown		Total Job	161	
Rates										
Circulating	NONE	Mixing	5	Displacement	5	Avg. Job	5			
Cement Left In Pipe	Amount	40.7 ft	Reason	Shoe Joint						
Frac Ring # 1 @	ID	Frac ring # 2 @	ID	Frac Ring # 3 @	ID	Frac Ring # 4 @	ID			
The Information Stated Herein Is Correct				Customer Representative Signature						

The Road to Excellence Starts with Safety

Sold To #: 343492	Ship To #: 2822750	Quote #:	Sales Order #: 7811556
Customer: BILL BARRETT CORPORATION E-BILL		Customer Rep: South, Jodi	
Well Name: GGU FED	Well #: 41B-29-691	API/UWI #: 05-045-19799	
Field: MAMM CREEK	City (SAP): SILT	County/Parish: Garfield	State: Colorado
Legal Description:			
Lat: N 39.503 deg. OR N 39 deg. 30 min. 9.853 secs.		Long: W 107.573 deg. OR W -108 deg. 25 min. 36.714 secs.	
Contractor: Pro Petro		Rig/Platform Name/Num: Pro Petro	
Job Purpose: Cement Surface Casing			Ticket Amount:
Well Type: Development Well		Job Type: Cement Surface Casing	
Sales Person: METLI, MARSHALL		Srv Supervisor: MAGERS, MICHAEL	MBU ID Emp #: 339439

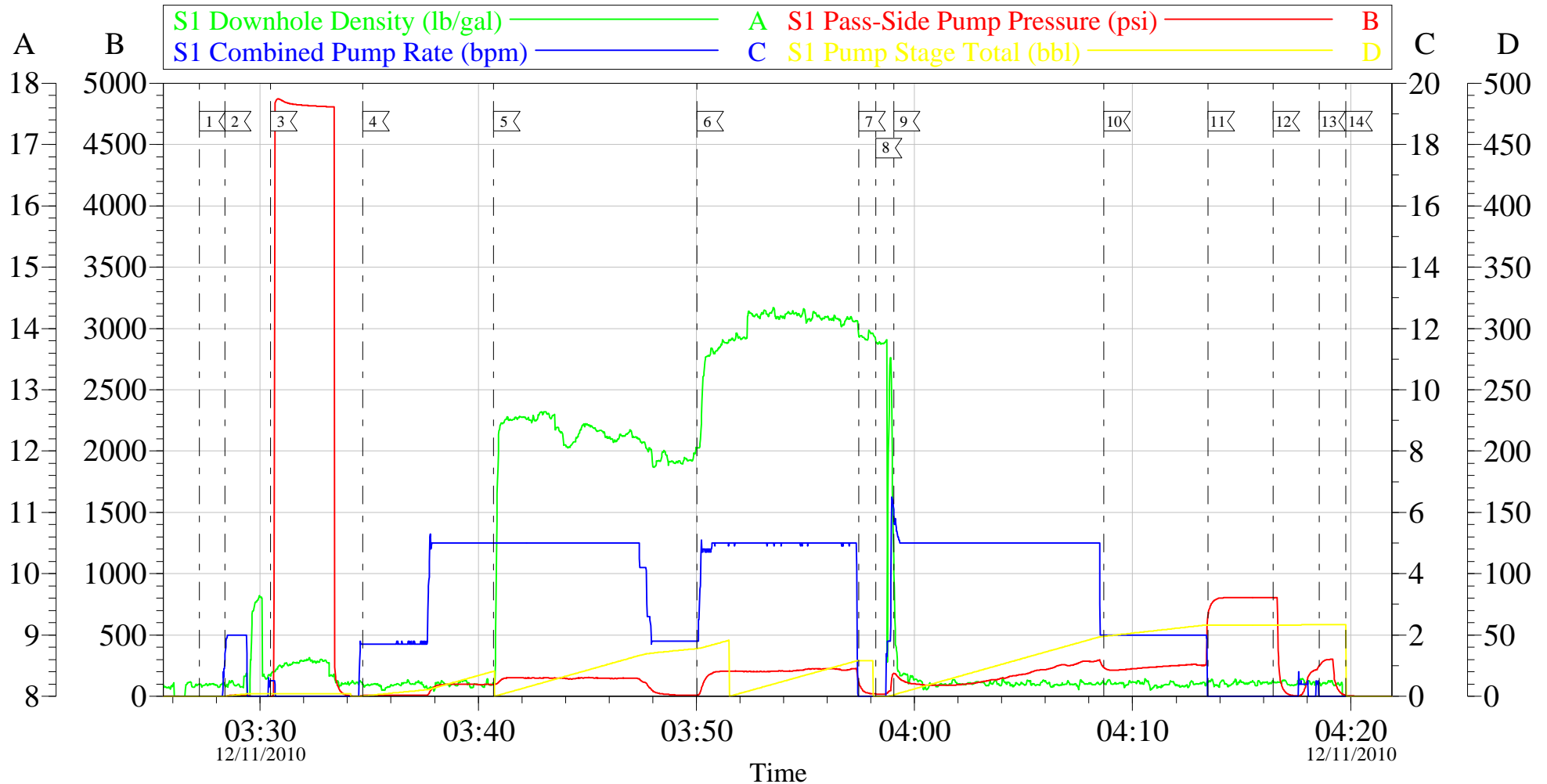
Activity Description	Date/Time	Cht #	Rate bbl/min	Volume bbl		Pressure psig		Comments
				Stage	Total	Tubing	Casing	
Arrive At Loc	12/10/2010 15:00							HES ALREADY ON LOCATION
Pre-Rig Up Safety Meeting	12/11/2010 02:55							TD-835 TP-814 SJ-40.65 MW-8.33 CASING- 9 5/8 36# J-55 OH-12 3/8" PLUG CONTAINER-B 0679
Rig-Up Equipment	12/11/2010 03:00							
Safety Huddle	12/11/2010 03:20							RIG CREW AND HES ALL PRESENT
Start Job	12/11/2010 03:27							
Other	12/11/2010 03:28		2	2			11.0	FILL LINES
Pressure Test	12/11/2010 03:30		0.5	0.5			4800.0	PSI TEST OK
Pump Spacer 1	12/11/2010 03:34		5	20			110.0	FRESH WATER
Pump Lead Cement	12/11/2010 03:40		5	50.9			198.0	120 SKS 12.3 PPG 2.38 FT3/SK 13.77 GAL/SK
Pump Tail Cement	12/11/2010 03:50		5	30.6			222.0	120 SKS 14.2 PPG 1.43 FT3/SK 6.85 GAL/SK
Shutdown	12/11/2010 03:57							
Drop Plug	12/11/2010 03:58							PLUG AWAY NO PROBLEM
Pump Displacement	12/11/2010 03:59		5	59.8			255.0	FRESH WATER
Slow Rate	12/11/2010 04:08		2	50			230.0	GOT RETURNS 15 BBLS INTO DISPLACEMENT/

Cementing Job Log

Activity Description	Date/Time	Cht #	Rate bbl/ min	Volume bbl		Pressure psig		Comments
				Stage	Total	Tubing	Casing	
Bump Plug	12/11/2010 04:13		2	59.8			250.0	PLUG BUMPED/GOT 8 BBLS OF CEMENT TO SURFACE
Check Floats	12/11/2010 04:16			59.8			800.0	FLOATS HELD/GOT 1 BBL BACK INTO DISPLACEMENT TANK
Resume	12/11/2010 04:18		0.5	0.5				REBUMP PLUG
Shut In Well	12/11/2010 04:19			0.5			250.0	SHUT IN WELL WITH 250 PSI
End Job	12/11/2010 04:20							THANKS FOR USING HES AND THE CREW OF MIKE MAGERS

BILL BARRETT PRO PETRO

SURFACE



Local Event Log			
1 START JOB	03:27:12	2 FILL LINES	03:28:22
4 PUMP SPACER	03:34:42	5 PUMP LEAD CEMENT	03:40:42
7 SHUT DOWN	03:57:27	8 DROP PLUG	03:58:13
10 SLOW RATE	04:08:41	11 BUMP PLUG	04:13:27
13 REBUMP PLUG	04:18:33	14 SHUT IN WELL-END JOB	04:19:47
		3 PRESSURE TEST	03:30:29
		6 PUMP TAIL CEMENT	03:50:01
		9 PUMP FRSH WTR DISPLACEMENT	03:59:03
		12 CHECK FLOATS	04:16:26

Customer: BILL BARRETT	Job Date: 11-Dec-2010	Sales Order #: 7811556
Well Description: GGU FED 41B-29-691	Job Type: SURFACE	ADC Used: YES
Company Rep: JODY SOUTH	Cement Supervisor: MIKE MAGERS	Elite #: 6 STEVE BORSZICH

OptiCem v6.3.4
11-Dec-10 05:10