
BILL BARRETT CORPORATION E-BILL

**GGU FEDERAL 31B-29-691
MAMM CREEK
Garfield County , Colorado**

Cement Surface Casing
07-Dec-2010

Post Job Report

The Road to Excellence Starts with Safety

| | | | |
|--|--|-------------------------|------------------------|
| Sold To #: 343492 | Ship To #: 2822766 | Quote #: | Sales Order #: 7812398 |
| Customer: BILL BARRETT CORPORATION E-BILL | Customer Rep: South, Jody | | |
| Well Name: GGU FEDERAL | Well #: 31B-29-691 | API/UWI #: 05-045-19804 | |
| Field: MAMM CREEK | City (SAP): SILT | County/Parish: Garfield | State: Colorado |
| Lat: N 39.503 deg. OR N 39 deg. 30 min. 10.141 secs. | Long: W 107.573 deg. OR W -108 deg. 25 min. 35.764 secs. | | |
| Contractor: Pro Petro | Rig/Platform Name/Num: Pro Petro | | |
| Job Purpose: Cement Surface Casing | | | |
| Well Type: Development Well | Job Type: Cement Surface Casing | | |
| Sales Person: METLI, MARSHALL | Srvc Supervisor: KUKUS, CRAIG | MBU ID Emp #: 369124 | |

Job Personnel

| HES Emp Name | Exp Hrs | Emp # | HES Emp Name | Exp Hrs | Emp # | HES Emp Name | Exp Hrs | Emp # |
|-------------------------------|---------|--------|---------------------------|---------|--------|----------------|---------|--------|
| ANGLESTEIN, TROY Edward WM | 11.5 | 436099 | CHASTAIN, DERICK Allan | 11.5 | 455848 | KUKUS, CRAIG A | 11.5 | 369124 |
| LOPEZ, GERALD Wayne | 11.5 | 479828 | | | | | | |

Equipment

| HES Unit # | Distance-1 way | HES Unit # | Distance-1 way | HES Unit # | Distance-1 way | HES Unit # | Distance-1 way |
|------------|----------------|------------|----------------|------------|----------------|------------|----------------|
| 10297346 | 120 mile | 10744648C | 120 mile | 10829469 | 120 mile | 10998508 | 120 mile |
| 11071559 | 120 mile | | | | | | |

Job Hours

| Date | On Location Hours | Operating Hours | Date | On Location Hours | Operating Hours | Date | On Location Hours | Operating Hours |
|---------|-------------------|-----------------|---------|-------------------|-----------------|------|-------------------|-----------------|
| 12/7/10 | 10 | 1 | 12/8/10 | 1.5 | 1 | | | |

TOTAL Total is the sum of each column separately

| Job | | | | Job Times | | | |
|------------------------|-------------------|--------|--|---------------|-----------------|-----------|-----|
| Formation Name | | | | Date | Time | Time Zone | |
| Formation Depth (MD) | Top | Bottom | | Called Out | 07 - Dec - 2010 | 05:30 | MST |
| Form Type | BHST | | | On Location | 07 - Dec - 2010 | 14:00 | MST |
| Job depth MD | 840. ft | | | Job Started | 07 - Dec - 2010 | 23:17 | MST |
| Water Depth | Wk Ht Above Floor | | | Job Completed | 07 - Dec - 2010 | 23:56 | MST |
| Perforation Depth (MD) | From | To | | Departed Loc | 08 - Dec - 2010 | 01:30 | MST |

Well Data

| Description | New / Used | Max pressure psig | Size in | ID in | Weight lbm/ft | Thread | Grade | Top MD ft | Bottom MD ft | Top TVD ft | Bottom TVD ft |
|-------------|------------|-------------------|---------|-------|---------------|--------|-------|-----------|--------------|------------|---------------|
|-------------|------------|-------------------|---------|-------|---------------|--------|-------|-----------|--------------|------------|---------------|

Sales/Rental/3rd Party (HES)

| Description | Qty | Qty uom | Depth | Supplier |
|--|-----|---------|-------|----------|
| PLUG,CMTG,TOP,9 5/8,HWE,8.16 MIN/9.06 MA | 1 | EA | | |

Tools and Accessories

| Type | Size | Qty | Make | Depth | Type | Size | Qty | Make | Depth | Type | Size | Qty | Make |
|--------------|------|-----|------|-------|-------------|------|-----|------|-------|----------------|-------|-----|------|
| Guide Shoe | | | | | Packer | | | | | Top Plug | 9 5/8 | 1 | HES |
| Float Shoe | | | | | Bridge Plug | | | | | Bottom Plug | | | |
| Float Collar | | | | | Retainer | | | | | SSR plug set | | | |
| Insert Float | | | | | | | | | | Plug Container | 95/8 | 1 | HES |
| Stage Tool | | | | | | | | | | Centralizers | | | |

Miscellaneous Materials

| Gelling Agt | Conc | Surfactant | Conc | Acid Type | Qty | Conc | % |
|---------------|------|------------|------|-----------|------|------|-----|
| Treatment Fld | Conc | Inhibitor | Conc | Sand Type | Size | | Qty |

Fluid Data

| Stage/Plug #: 1 | | | | | | | | | |
|-----------------|------------|------------|-----|---------|------------------------|--------------|------------------|--------------|------------------------|
| Fluid # | Stage Type | Fluid Name | Qty | Qty uom | Mixing Density lbm/gal | Yield ft3/sk | Mix Fluid Gal/sk | Rate bbl/min | Total Mix Fluid Gal/sk |

| Stage/Plug #: 1 | | | | | | | | | |
|--|----------------------|-------------------------------|--------|-----------------------------------|------------------------|---------------------------|------------------|--------------|------------------------|
| Fluid # | Stage Type | Fluid Name | Qty | Qty uom | Mixing Density lbm/gal | Yield ft ³ /sk | Mix Fluid Gal/sk | Rate bbl/min | Total Mix Fluid Gal/sk |
| 1 | Water Spacer | | 20.00 | bbl | . | .0 | .0 | .0 | |
| 2 | VersaCem Lead Slurry | VERSACEM (TM) SYSTEM (452010) | 120.0 | sacks | 12.3 | 2.38 | 13.77 | | 13.77 |
| | 13.77 Gal | FRESH WATER | | | | | | | |
| 3 | SwiftCem Tail Slurry | SWIFTCEM (TM) SYSTEM (452990) | 120.0 | sacks | 14.2 | 1.43 | 6.85 | | 6.85 |
| | 6.85 Gal | FRESH WATER | | | | | | | |
| 4 | Displacement | | 60.00 | bbl | . | .0 | .0 | .0 | |
| Calculated Values | | Pressures | | Volumes | | | | | |
| Displacement | 60 | Shut In: Instant | | Lost Returns | 0 | Cement Slurry | 81 | Pad | |
| Top Of Cement | SURFACE | 5 Min | | Cement Returns | 27 | Actual Displacement | 60 | Treatment | |
| Frac Gradient | | 15 Min | | Spacers | 20 | Load and Breakdown | | Total Job | 162 |
| Rates | | | | | | | | | |
| Circulating | | Mixing | 5 | Displacement | 5 | Avg. Job | | 5 | |
| Cement Left In Pipe | Amount | 44.90 ft | Reason | Shoe Joint | | | | | |
| Frac Ring # 1 @ | ID | Frac ring # 2 @ | ID | Frac Ring # 3 @ | ID | Frac Ring # 4 @ | ID | | |
| The Information Stated Herein Is Correct | | | | Customer Representative Signature | | | | | |

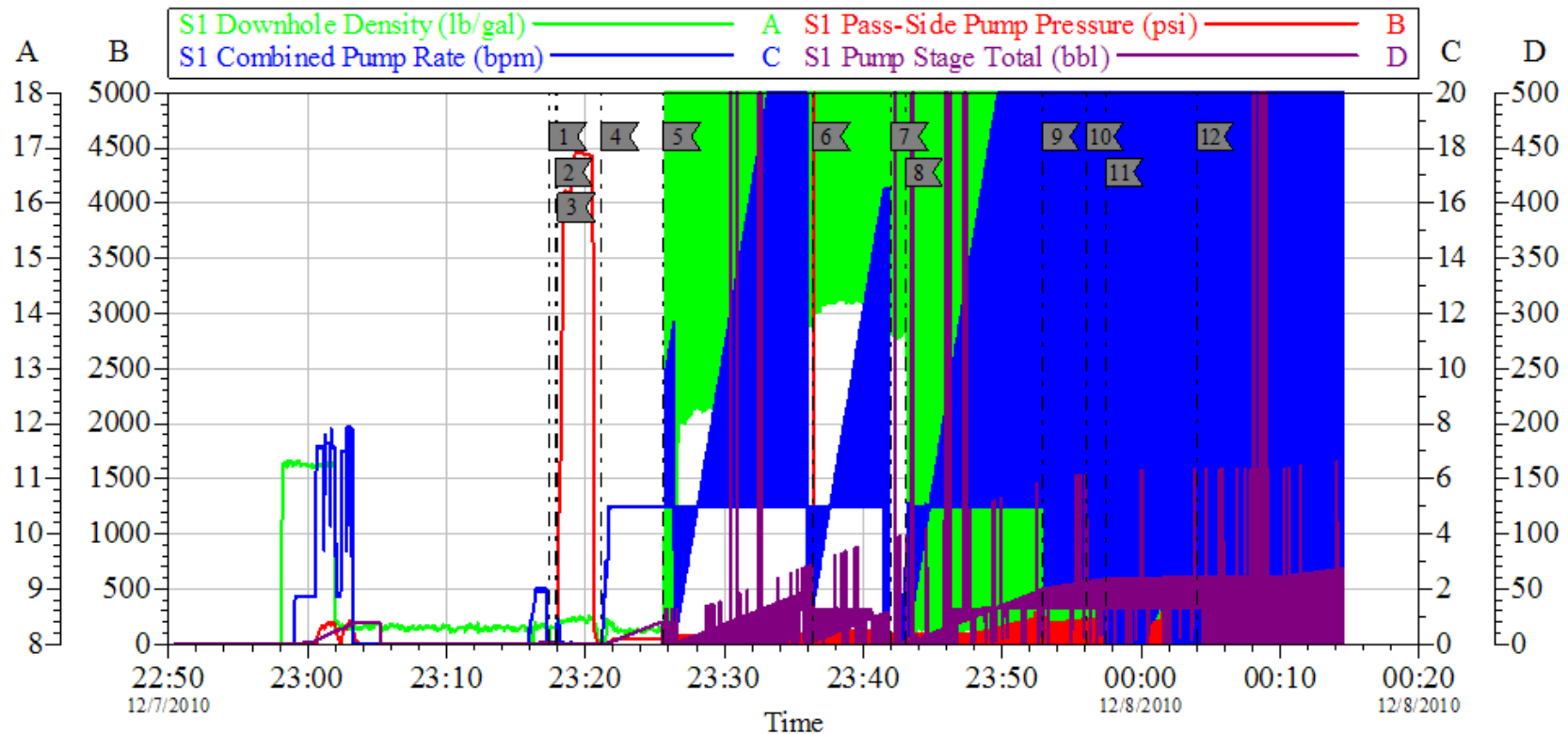
The Road to Excellence Starts with Safety

| | | | |
|---|---------------------------|---|-------------------------------|
| Sold To #: 343492 | Ship To #: 2822766 | Quote #: | Sales Order #: 7812398 |
| Customer: BILL BARRETT CORPORATION E-BILL | | Customer Rep: South, Jody | |
| Well Name: GGU FEDERAL | Well #: 31B-29-691 | API/UWI #: 05-045-19804 | |
| Field: MAMM CREEK | City (SAP): SILT | County/Parish: Garfield | State: Colorado |
| Legal Description: | | | |
| Lat: N 39.503 deg. OR N 39 deg. 30 min. 10.141 secs. | | Long: W 107.573 deg. OR W -108 deg. 25 min. 35.764 secs. | |
| Contractor: Pro Petro | | Rig/Platform Name/Num: Pro Petro | |
| Job Purpose: Cement Surface Casing | | | Ticket Amount: |
| Well Type: Development Well | | Job Type: Cement Surface Casing | |
| Sales Person: METLI, MARSHALL | | Srv Supervisor: KUKUS, CRAIG | MBU ID Emp #: 369124 |

| Activity Description | Date/Time | Cht # | Rate bbl/min | Volume bbl | | Pressure psig | | Comments |
|---------------------------------------|------------------|-------|--------------|------------|-------|---------------|--------|---|
| | | | | Stage | Total | Tubing | Casing | |
| Call Out | 12/07/2010 05:30 | | | | | | | CREW RETURNED TO YARD FOR TWO LOADS |
| Depart Yard Safety Meeting | 12/07/2010 11:30 | | | | | | | SAFETY MEETING INVOLVING THE ENTIRE CMT CREW |
| Arrive At Loc | 12/07/2010 14:00 | | | | | | | RETURNED WITH CMT FOR NEXT TWO HOLES/RIG STILL DRILLING |
| Assessment Of Location Safety Meeting | 12/07/2010 14:15 | | | | | | | ASSESSMENT OF LOCATION INVOLVING THE ENTIRE CMT CREW |
| Pre-Rig Up Safety Meeting | 12/07/2010 14:25 | | | | | | | SAFETY MEETING INVOLVING THE ENTIRE CMT CREW |
| Rig-Up Equipment | 12/07/2010 14:30 | | | | | | | RELOAD HEAD AND RIG UP IRON |
| Circulate Well | 12/07/2010 14:30 | | | | | | | NONE |
| Pre-Job Safety Meeting | 12/07/2010 23:00 | | | | | | | SAFETY MEETING INVOLVING EVERYONE ON LOCATION |
| Start Job | 12/07/2010 23:17 | | | | | | | T.D. 840, T.P. 826.66, S.J. 44.9, PIPE 9 5/8" 36#, O.H. 12 3/8", M.W. 8.3PPG, |
| Other | 12/07/2010 23:17 | | 2 | 2 | | | 6.0 | FILL LINES |
| Pressure Test | 12/07/2010 23:18 | | 0.5 | | | 4500.0 | | PRESSURE TEST GOOD |
| Pump Spacer 1 | 12/07/2010 23:21 | | 5 | 20 | | | 60.0 | FRESH WATER SPACER |

| Activity Description | Date/Time | Cht # | Rate bbl/ min | Volume bbl | | Pressure psig | | Comments |
|--|---------------------|----------|---------------------|---------------|-------|------------------|--------|---|
| | | | | Stage | Total | Tubing | Casing | |
| Pump Lead Cement | 12/07/2010 23:25 | | 5 | 50.8 | | | 116.0 | 120 SKS PUMPED AT 12.3PPG, 2.38Y, 13.77 GAL/SK |
| Pump Tail Cement | 12/07/2010 23:36 | | 5 | 30.6 | | | 140.0 | 120 SKS PUMPED AT 14.2PPG, 1.43Y, 6.85 GAL/SK / GOT RETURNS BACK AT 27 BBL GONE |
| Shutdown | 12/07/2010 23:41 | | | | | | | |
| Drop Top Plug | 12/07/2010 23:41 | | | | | | | PLUG LEFT THE PLUG CONTAINER |
| Pump Displacement | 12/07/2010 23:43 | | 5 | 60.5 | | | 250.0 | PUMP FRESH WATER DISPLACEMENT / GOT CEMENT TO SURFACE AT 35 BBLS GONE |
| Slow Rate | 12/07/2010 23:52 | | 2 | 50 | | | 220.0 | SLOW RATE LAST 10 BBLS TO 2 BBL A MIN |
| Bump Plug | 12/07/2010 23:56 | | 2 | 60.5 | | | 850.0 | PLUG LANDED AT 230 PSI BUMPED UP TO 850 PSI |
| Check Floats | 12/07/2010 23:57 | | | | | | | FLOATS HELD / GOT 1 BBL BACK / BUMPED BACK UP TO 280 PSI SHUT IN HEAD |
| End Job | 12/08/2010 00:04 | | | | | | | GOT A TOTAL OF 25 BBL CEMENT BACK TO SURFACE |
| Pre-Rig Down Safety Meeting | 12/08/2010 00:15 | | | | | | | SAFETY MEETING INVOLVING THE ENTIRE CMT CREW |
| Rig-Down Equipment | 12/08/2010 00:30 | | | | | | | RIG DOWN / BLOW PUMPS AND LINES DOWN |
| Safety Meeting - Departing Location | 12/08/2010 00:30 | | | | | | | CREW STAYED ON LOCATION FOR NEXT WELL |
| Comment | 12/08/2010 01:30 | | | | | | | THANK YOU FOR USING HALLIBURTON, CRAIG KUKUS AND CREW |

BARRETT SURFACE



| Local Event Log | | | | | |
|-----------------|---------------------|--------------------|----|-----------------------|--------------------|
| 1 | START JOB | 12/7/2010 23:17:26 | 2 | PRIME LINES | 12/7/2010 23:17:49 |
| 3 | PRESSURE TEST | 12/7/2010 23:18:01 | 4 | PUMP SPACER | 12/7/2010 23:21:12 |
| 5 | PUMP LEAD CEMENT | 12/7/2010 23:25:37 | 6 | PUMP TAIL CEMENT | 12/7/2010 23:36:22 |
| 7 | SHUT DOWN/DROP PLUG | 12/7/2010 23:41:59 | 8 | PUMP H2O DISPLACEMENT | 12/7/2010 23:43:02 |
| 9 | SLOW RATE | 12/7/2010 23:52:54 | 10 | BUMP PLUG | 12/7/2010 23:56:04 |
| 11 | CHECK FLOATS | 12/7/2010 23:57:29 | 12 | END JOB | 12/8/2010 00:04:00 |

| | | | | | |
|-------------------|--------------------|--------------------|-------------|-------------------|-------------------------|
| Customer: | BARRETT | Job Date: | 07-Dec-2010 | Sales Order #: | 7812398 |
| Well Description: | GGU FED 31B-29-691 | Job Type: | SURFACE | ADC Used: | YES |
| Company Rep: | JODY SOUTH | Cement Supervisor: | CRAIG KUKUS | Elite #/Operator: | ELITE 6 TROY ANGLESTEIN |

OptiCem v6.4.8
08-Dec-10 00:42