
BILL BARRETT CORPORATION E-BILL

**GGU SWANSON 32C-29-691
MAMM CREEK
Garfield County , Colorado**

Cement Surface Casing
09-Dec-2010

Post Job Report

The Road to Excellence Starts with Safety

Sold To #: 343492		Ship To #: 2822754		Quote #:		Sales Order #: 7812108	
Customer: BILL BARRETT CORPORATION E-BILL				Customer Rep: South, Jody			
Well Name: GGU SWANSON			Well #: 32C-29-691		API/UWI #: 05-045-19797		
Field: MAMM CREEK		City (SAP): SILT		County/Parish: Garfield		State: Colorado	
Lat: N 39.503 deg. OR N 39 deg. 30 min. 9.968 secs.				Long: W 107.573 deg. OR W -108 deg. 25 min. 36.332 secs.			
Contractor: Pro Petro			Rig/Platform Name/Num: Pro Petro				
Job Purpose: Cement Surface Casing							
Well Type: Development Well				Job Type: Cement Surface Casing			
Sales Person: METLI, MARSHALL			Srvc Supervisor: MAGERS, MICHAEL		MBU ID Emp #: 339439		
Job Personnel							
HES Emp Name	Exp Hrs	Emp #	HES Emp Name	Exp Hrs	Emp #	HES Emp Name	Exp Hrs
ANGLESTEIN, TROY Edward WM	14	436099	BORSZICH, STEPHEN A	14	412388	LOPEZ, GERALD Wayne	14
MAGERS, MICHAEL Gerard	14	339439					
Equipment							
HES Unit #	Distance-1 way	HES Unit #	Distance-1 way	HES Unit #	Distance-1 way	HES Unit #	Distance-1 way
11259886	120 MILES	10998508	120	10744648	120	10897891	10867425
Job Hours							
Date	On Location Hours	Operating Hours	Date	On Location Hours	Operating Hours	Date	On Location Hours
12/09/2010	14	1					
TOTAL		<i>Total is the sum of each column separately</i>					
Job				Job Times			
Formation Name					Date	Time	Time Zone
Formation Depth (MD)	Top	Bottom		Called Out	09 - Dec - 2010	09:00	MST
Form Type	BHST			On Location	09 - Dec - 2010	09:00	MST
Job depth MD	807. ft		Job Depth TVD	807. ft	Job Started	09 - Dec - 2010	22:04
Water Depth	Wk Ht Above Floor			3. ft	Job Completed	09 - Dec - 2010	22:53
Perforation Depth (MD)	From	To		Departed Loc			
Well Data							
Description	New / Used	Max pressure psig	Size in	ID in	Weight lbm/ft	Thread	Grade
							Top MD ft
							Bottom MD ft
							Top TVD ft
							Bottom TVD ft
Sales/Rental/3rd Party (HES)							
Description					Qty	Qty uom	Depth
KIT,HALL WELD-A					12	EA	
PLUG,CMTG,TOP,9 5/8,HWE,8.16 MIN/9.06 MA					1	EA	
Tools and Accessories							
Type	Size	Qty	Make	Depth	Type	Size	Qty
Guide Shoe					Packer		
Float Shoe					Bridge Plug		
Float Collar					Retainer		
Insert Float							
Stage Tool							
Miscellaneous Materials							
Gelling Agt		Conc		Surfactant		Conc	
Treatment Fld		Conc		Inhibitor		Conc	
					Acid Type		Qty
					Sand Type		Size
							Conc %
							Qty

Fluid Data										
Stage/Plug #: 1										
Fluid #	Stage Type	Fluid Name	Qty	Qty uom	Mixing Density lbm/gal	Yield ft ³ /sk	Mix Fluid Gal/sk	Rate bbl/min	Total Mix Fluid Gal/sk	
1	Water Spacer		20.00	bbl	.	.0	.0	.0		
2	VersaCem Lead Slurry	VERSACEM (TM) SYSTEM (452010)	120.0	sacks	12.3	2.38	13.77		13.77	
	13.77 Gal	FRESH WATER								
3	SwiftCem Tail Slurry	SWIFTCEM (TM) SYSTEM (452990)	120.0	sacks	14.2	1.43	6.85		6.85	
	6.85 Gal	FRESH WATER								
4	Displacement		54.00	bbl	.	.0	.0	.0		
Calculated Values		Pressures		Volumes						
Displacement	54.2	Shut In: Instant		Lost Returns	0	Cement Slurry	81.5	Pad		
Top Of Cement	SURFACE	5 Min		Cement Returns	24	Actual Displacement		Treatment		
Frac Gradient		15 Min		Spacers	20	Load and Breakdown		Total Job	156	
Rates										
Circulating	NONE	Mixing	5	Displacement	5/2	Avg. Job	5			
Cement Left In Pipe	Amount	44.8 ft	Reason	Shoe Joint						
Frac Ring # 1 @	ID	Frac ring # 2 @	ID	Frac Ring # 3 @	ID	Frac Ring # 4 @	ID			
The Information Stated Herein Is Correct				Customer Representative Signature						

The Road to Excellence Starts with Safety

Sold To #: 343492	Ship To #: 2822754	Quote #:	Sales Order #: 7812108
Customer: BILL BARRETT CORPORATION E-BILL		Customer Rep: South, Jody	
Well Name: GGU SWANSON		Well #: 32C-29-691	API/UWI #: 05-045-19797
Field: MAMM CREEK	City (SAP): SILT	County/Parish: Garfield	State: Colorado
Legal Description:			
Lat: N 39.503 deg. OR N 39 deg. 30 min. 9.968 secs.		Long: W 107.573 deg. OR W -108 deg. 25 min. 36.332 secs.	
Contractor: Pro Petro		Rig/Platform Name/Num: Pro Petro	
Job Purpose: Cement Surface Casing			Ticket Amount:
Well Type: Development Well		Job Type: Cement Surface Casing	
Sales Person: METLI, MARSHALL		Srvc Supervisor: MAGERS, MICHAEL	MBU ID Emp #: 339439

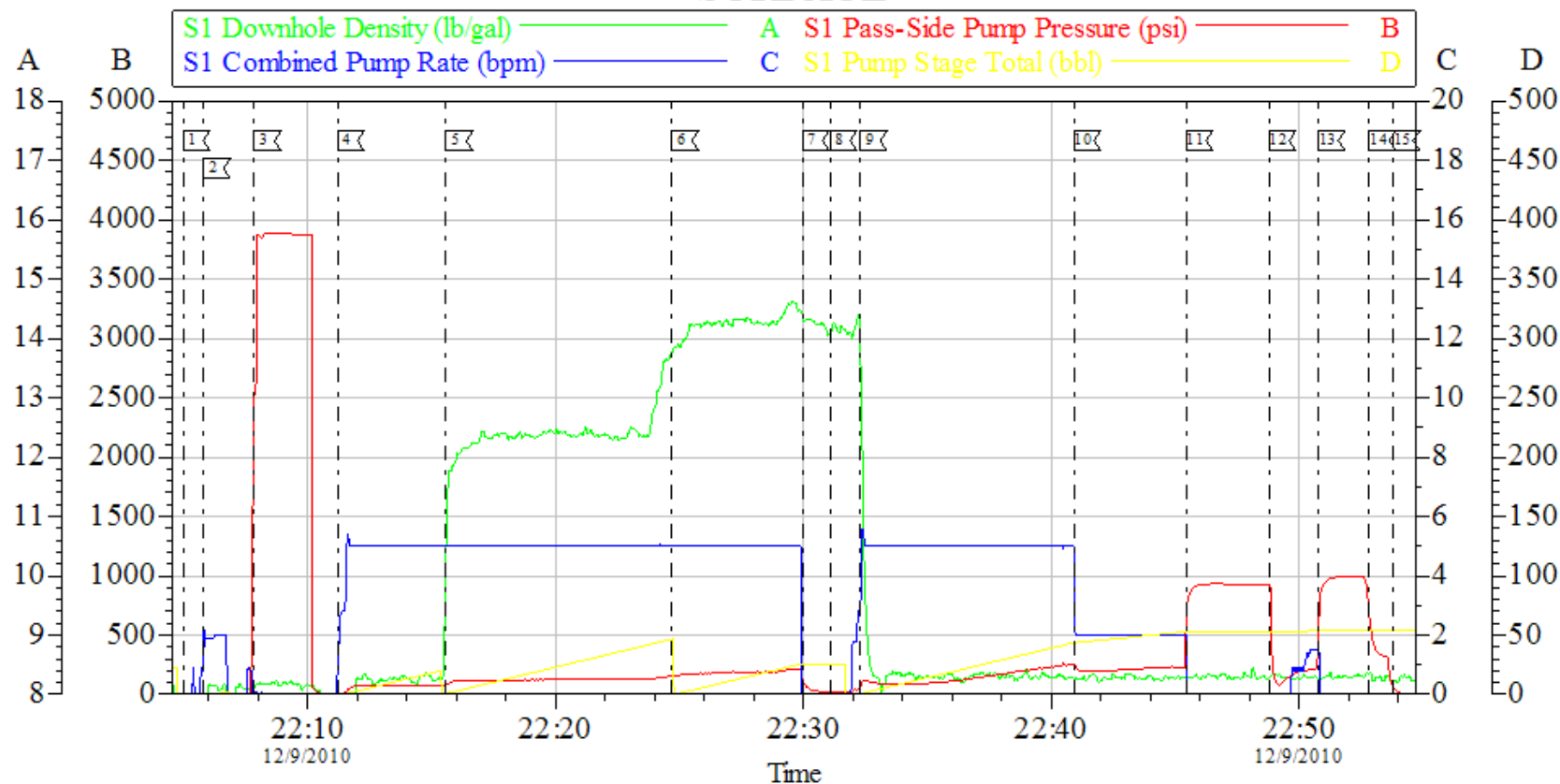
Activity Description	Date/Time	Cht #	Rate bbl/min	Volume bbl		Pressure psig		Comments
				Stage	Total	Tubing	Casing	
Arrive At Loc	12/09/2010 09:00							HES ARLREADY ON LOCATION
Pre-Rig Up Safety Meeting	12/09/2010 21:30							
Rig-Up Equipment	12/09/2010 21:35							TD-765 TP-746.3 SJ-44.8 MW-8.33 CASING- 9 5/8 36# J-55 OH-12 3/8" PLUG CONTAINER B0679
Safety Huddle	12/09/2010 21:55							RIG CREW AND HES ALL PRESENT
Start Job	12/09/2010 22:04							
Other	12/09/2010 22:05		2	2			8.0	FILL LINES
Pressure Test	12/09/2010 22:07		0.5	0.5			3870.0	PSI TEST OK
Pump Spacer 1	12/09/2010 22:11		2	20			75.0	FRESH WATER
Pump Lead Cement	12/09/2010 22:15		5	50.9			196.0	120 SKS 12.3 PPG 2.38 FT3/SK 13.77 GAL/SK
Pump Tail Cement	12/09/2010 22:24		5	30.6			190.0	120 SKS 14.2 PPG 1.43 FT3/SK 6.85 GAL/SK GOT RETURNS AT 17 BBLS INTO TAIL CEMENT
Shutdown	12/09/2010 22:29							
Drop Plug	12/09/2010 22:31							PLUG AWAY NO PROBLEMS
Pump Displacement	12/09/2010 22:32		5	54.2			260.0	FRESH WATER DISPLACEMENT

Cementing Job Log

Activity Description	Date/Time	Cht #	Rate bbl/ min	Volume bbl		Pressure psig		Comments
				Stage	Total	Tubing	Casing	
Slow Rate	12/09/2010 22:40		2	44			250.0	GOT CEMENT TO SURFACE AT 30 BBLS GONE/24 BBLS TO SURFACE
Bump Plug	12/09/2010 22:45		2	54.2			250.0	BUMPED PLUG
Check Floats	12/09/2010 22:48			54.2			940.0	FLOATS DID NOT HOLD/GOT 1.5 BBL BACK INT DISPLACEMENT TANK
Resume	12/09/2010 22:50			1			940.0	REBUMP PLUG
Shut In Well	12/09/2010 22:52						323.0	SHUT IN WELL WITH 323 PSI
End Job	12/09/2010 22:53							THANKS FOR USING HES AND THE CREW OF MIKE MAGERS

BILL BARRETT PRO PETRO

SURFACE



Local Event Log

1 STARTJOB	22:04:58	2 FILL LINES	22:05:48	3 PRESSURE TEST	22:07:51
4 PUMP SPACER	22:11:12	5 PUMP LEAD CEMENT	22:15:35	6 PUMP TAIL CEMENT	22:24:41
7 SHUTDOWN	22:29:57	8 DROP PLUG	22:31:04	9 PUMP FRSH WTR DISPLACEMENT	22:32:17
10 SLOWRATE	22:40:54	11 BUMP PLUG	22:45:26	12 CHECK FLOATS	22:48:47
13 REBUMP PLUG	22:50:46	14 SHUTIN WELL	22:52:49	15 END JOB	22:53:47

Customer: BILL BARRETT
Well Description: GGU S WANS ON 32C-29-691
Company Rep: JODY S OUTH

Job Date: 09-Dec-2010
Job Type: SURFACE
Cement Supervisor: MIKE MAGERS

Sales Order #: 7812108
ADC Used: YES
Elite #: 6 TROY ANGLESTEIN

OptiCem v6.3.4
09-Dec-10 23:07