
BILL BARRETT CORPORATION E-BILL

**GGU MILLER 24B-32-691
MAMM CREEK
Garfield County , Colorado**

Cement Surface Casing
07-Oct-2010

Post Job Report

The Road to Excellence Starts with Safety

Sold To #: 343492	Ship To #: 2810703	Quote #:	Sales Order #: 7677921
Customer: BILL BARRETT CORPORATION E-BILL	Customer Rep: South, Jody		
Well Name: GGU MILLER	Well #: 24B-32-691	API/UWI #: 05-045-19425	
Field: MAMM CREEK	City (SAP): SILT	County/Parish: Garfield	State: Colorado
Lat: N 39.48 deg. OR N 39 deg. 28 min. 49.231 secs.	Long: W 107.579 deg. OR W -108 deg. 25 min. 15.992 secs.		
Contractor: PROPETRO	Rig/Platform Name/Num: PRO PETRO		
Job Purpose: Cement Surface Casing			
Well Type: Development Well	Job Type: Cement Surface Casing		
Sales Person: METLI, MARSHALL	Srvc Supervisor: MUHLESTEIN, RYAN	MBU ID Emp #: 453609	

Job Personnel

HES Emp Name	Exp Hrs	Emp #	HES Emp Name	Exp Hrs	Emp #	HES Emp Name	Exp Hrs	Emp #
BANKS, BRENT A	5	371353	MUHLESTEIN, RYAN Herrick	55	453609	STILLSON, ERIC W	5	393789

Equipment

HES Unit #	Distance-1 way	HES Unit #	Distance-1 way	HES Unit #	Distance-1 way	HES Unit #	Distance-1 way
10616651C	120 mile	10867304	120 mile	10951246	120 mile	10995025	120 mile
10998054	120 mile						

Job Hours

Date	On Location Hours	Operating Hours	Date	On Location Hours	Operating Hours	Date	On Location Hours	Operating Hours
10/07/10	5	1						

TOTAL Total is the sum of each column separately

Job

Formation Name	Job	Job Times
Formation Depth (MD)	Top Bottom	Date Time Time Zone
Form Type	BHST	On Location
Job depth MD	790. ft	Job Depth TVD 790. ft
Water Depth	Wk Ht Above Floor 4. ft	Job Started 07 - Oct - 2010 16:06 MST
Perforation Depth (MD)	From To	Job Completed 07 - Oct - 2010 16:56 MST
		Departed Loc

Well Data

Description	New / Used	Max pressure psig	Size in	ID in	Weight lbm/ft	Thread	Grade	Top MD ft	Bottom MD ft	Top TVD ft	Bottom TVD ft
OPEN HOLE SECTION				12.375				.	790.		
SURFACE CASING	Unknown		9.625	8.921	36.		H-40	.	770.4		

Sales/Rental/3rd Party (HES)

Description	Qty	Qty uom	Depth	Supplier
PLUG,CMTG,TOP,9 5/8,HWE,8.16 MIN/9.06 MA	1	EA		HES

Tools and Accessories

Type	Size	Qty	Make	Depth	Type	Size	Qty	Make	Depth	Type	Size	Qty	Make
Guide Shoe					Packer					Top Plug	9.625	1	HES
Float Shoe					Bridge Plug					Bottom Plug			
Float Collar					Retainer					SSR plug set			
Insert Float										Plug Container	9.625	1	HES
Stage Tool										Centralizers			

Miscellaneous Materials

Gelling Agt	Conc	Surfactant	Conc	Acid Type	Qty	Conc	%
Treatment Fld	Conc	Inhibitor	Conc	Sand Type	Size	Qty	

Fluid Data										
Stage/Plug #: 1										
Fluid #	Stage Type	Fluid Name	Qty	Qty uom	Mixing Density lbm/gal	Yield ft ³ /sk	Mix Fluid Gal/sk	Rate bbl/min	Total Mix Fluid Gal/sk	
1	WATER SPACER		10.00	bbl	8.33	.0	.0	5.0		
2	Lead Cement	VERSACEM (TM) SYSTEM (452010)	120.0	sacks	12.3	2.37	13.76	5.0	13.42	
	13.418 Gal	FRESH WATER								
3	Tail Cement	SWIFTCEM (TM) SYSTEM (452990)	120.0	sacks	14.2	1.43	6.88	5.0	6.72	
	6.715 Gal	FRESH WATER								
4	DISPLACEMENT		20.00	bbl	8.33	.0	.0	5.0		
Calculated Values		Pressures		Volumes						
Displacement	56.2	Shut In: Instant		Lost Returns	0	Cement Slurry	81	Pad		
Top Of Cement	0	5 Min		Cement Returns	25	Actual Displacement	56	Treatment		
Frac Gradient		15 Min		Spacers	20	Load and Breakdown		Total Job		
Rates										
Circulating		Mixing	5	Displacement	5	Avg. Job	5			
Cement Left In Pipe	Amount	44.34 ft	Reason	Shoe Joint						
Frac Ring # 1 @	ID	Frac ring # 2 @	ID	Frac Ring # 3 @	ID	Frac Ring # 4 @	ID			
The Information Stated Herein Is Correct				Customer Representative Signature						

The Road to Excellence Starts with Safety

Sold To #: 343492	Ship To #: 2810703	Quote #:	Sales Order #: 7677921
Customer: BILL BARRETT CORPORATION E-BILL		Customer Rep: South, Jody	
Well Name: GGU MILLER	Well #: 24B-32-691	API/UWI #: 05-045-19425	
Field: MAMM CREEK	City (SAP): SILT	County/Parish: Garfield	State: Colorado
Legal Description:			
Lat: N 39.48 deg. OR N 39 deg. 28 min. 49.231 secs.		Long: W 107.579 deg. OR W -108 deg. 25 min. 15.992 secs.	
Contractor: PROPETRO		Rig/Platform Name/Num: PRO PETRO	
Job Purpose: Cement Surface Casing			Ticket Amount:
Well Type: Development Well		Job Type: Cement Surface Casing	
Sales Person: METLI, MARSHALL		Srvc Supervisor: MUHLESTEIN, RYAN	MBU ID Emp #: 453609

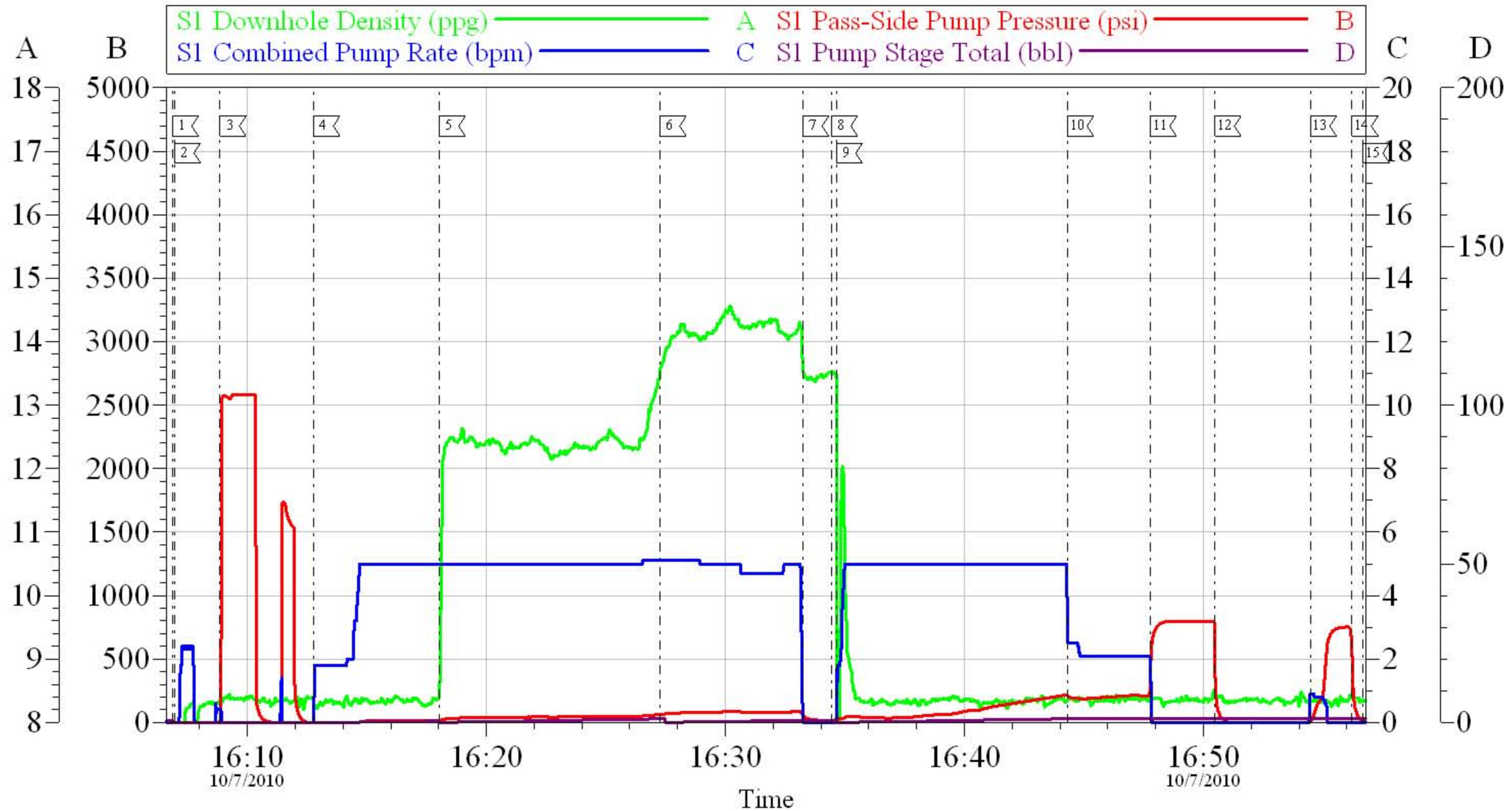
Activity Description	Date/Time	Cht #	Rate bbl/min	Volume bbl		Pressure psig		Comments
				Stage	Total	Tubing	Casing	
Arrive at Location from Service Center	10/07/2010 14:00							CREW ON LOCATION FROM PREVIOUS JOB
Assessment Of Location Safety Meeting	10/07/2010 14:15							WITH ALL HES PERSONNEL
Other	10/07/2010 14:30							SPOT EQUIPMENT
Pre-Rig Up Safety Meeting	10/07/2010 14:45							WITH ALL HES PERSONNEL
Rig-Up Equipment	10/07/2010 15:00							1 HT 400 PUMP, 1 660 BULK TRAILER, 1 F-450 PICK-UP, 1 PLUG CONTAINER
Pre-Job Safety Meeting	10/07/2010 15:45							WITH ALL PERSONNEL ON LOCATION
Start Job	10/07/2010 16:06							TD 790', TP 770.42', SJ 44.34', FC 727.08, 9 5/8" 36# CASING, 12 3/8" AIR DRILLED HOLE
Pump Water	10/07/2010 16:06		2	1			18.0	FILL LINES
Test Lines	10/07/2010 16:08						2606.0	HELD PRESSURE FOR 2 MIN, NO LEAKS
Other	10/07/2010 16:09							STARTED PUMPING SPACER, REALIZED 2" VALVE ON ON HEAD DID NOT OPENED PROPERLY, PUMP OPERATOR SHUT DOWN AND VERIFIED VALVE WAS OPEN
Pump Spacer 1	10/07/2010 16:12		5	20			32.0	PUMP FRESH WATER AT 2 BPM UNTIL TUB WEIGHED UP, THEN SPED RATE TO 5 BPM, AT 5 BBLS AWAY

Activity Description	Date/Time	Cht #	Rate bbl/min	Volume bbl		Pressure psig		Comments
				Stage	Total	Tubing	Casing	
Pump Lead Cement	10/07/2010 16:18		5	51			80.0	120 SKS, 12.3 PPG, 2.38 FT3/SK, 13.77 GAL/SK
Pump Tail Cement	10/07/2010 16:27		5	30			98.0	120 SKS, 14.2 PPG, 1.43 FT3/SK, 6.85 GAL/SK
Shutdown	10/07/2010 16:33							
Drop Top Plug	10/07/2010 16:34							LAUNCH PLUG, VERIFY PLUG LEFT CONTAINER
Pump Displacement	10/07/2010 16:34		5	56.2			240.0	FRESH WATER, CEMENT RETURNS TO SURFACE AT 31 BBLS AWAY ON DISPLACEMENT, 25 BBLS CEMENT TO SURFACE, NO SUGAR USED.
Slow Rate	10/07/2010 16:44		2	46.2			200.0	SLOW RATE 10 BBLS PRIOR TO CALCULATED DISPLACEMENT
Bump Plug	10/07/2010 16:47		2	56.2			240.0	PLUG BUMPED PLUG AT 240 PSI, PRESSURED UP TO 806
Check Floats	10/07/2010 16:50							FLOATS DID NOT HOLD FULLY, THERE WAS A STEADY TRICKLE COMING BACK.
Bump Plug	10/07/2010 16:54							RE BUMP PLUG TO 757 PSI
Check Floats	10/07/2010 16:56							FLOAT HELD 1 BBL BACK TO TRUCK
End Job	10/07/2010 16:56							
Pre-Rig Down Safety Meeting	10/07/2010 17:15							WITH ALL HES PERSONNEL
Rig-Down Equipment	10/07/2010 17:20							
Other	10/07/2010 17:45							WITH ALL HES PERSONNEL

Activity Description	Date/Time	Cht #	Rate bbl/ min	Volume bbl		Pressure psig		Comments
				Stage	Total	Tubing	Casing	
Comment	10/07/2010 17:46							THANK YOU FOR USING HALLIBURTON CEMENT DEPARTMENT. RYAN MUHLESTEIN AND CREW

BILL BARRETT

9 5/8 SURFACE



Local Event Log					
1	START JOB	16:06:51	2	FILL LINES	16:06:57
3	TEST LINES	16:08:51	4	PUMP SPACER	16:12:47
5	PUMP LEAD CEMENT	16:18:02	6	PUMP TAIL CEMENT	16:27:16
7	SHUT DOWN	16:33:14	8	DROP PLUG	16:34:26
9	PUMP DISPLACEMENT	16:34:39	10	SLOW RATE	16:44:19
11	BUMP PLUG	16:47:47	12	CHECK FLOATS	16:50:29
13	RE-BUMP PLUG	16:54:28	14	CHECK FLOATS	16:56:13
15	END JOB	16:56:41			

Customer: BILL BARRETT

Well Description: GGU MILLER FED 24B-32-691

Company Rep: JODY SOUTH

Job Date: 07-Oct-2010

Job Type: SURFACE

Cement Supervisor: RYAN MUHLESTEIN

Sales Order #: 7677921

ADC Used: YES

Elite #: 4 BRENT BANKS

OptiCem v6.4.6

07-Oct-10 17:44