

---

# **BILL BARRETT CORPORATION E-BILL**

---

**GGU MILLER 24C-32-691  
MAMM CREEK  
Garfield County , Colorado**

**Cement Surface Casing**  
**11-Oct-2010**

**Post Job Report**

## The Road to Excellence Starts with Safety

Sold To #: 343492	Ship To #: 2810707	Quote #:	Sales Order #: 7676503
Customer: BILL BARRETT CORPORATION E-BILL	Customer Rep: South, Jody		
Well Name: GGU MILLER	Well #: 24C-32-691	API/UWI #: 05-045-19429	
Field: MAMM CREEK	City (SAP): Silt	County/Parish: Garfield	State: Colorado
Lat: N 39.48 deg. OR N 39 deg. 28 min. 49.386 secs.	Long: W 107.579 deg. OR W -108 deg. 25 min. 16.046 secs.		
Contractor: Pro Petro	Rig/Platform Name/Num: Pro Petro		
Job Purpose: Cement Surface Casing			
Well Type: Development Well	Job Type: Cement Surface Casing		
Sales Person: METLI, MARSHALL	Srvc Supervisor: HUGENTOBLE, LOGAN	MBU ID Emp #: 447333	

## Job Personnel

HES Emp Name	Exp Hrs	Emp #	HES Emp Name	Exp Hrs	Emp #	HES Emp Name	Exp Hrs	Emp #
DOUT, JACOB J	3	430298	HUGENTOBLE, LOGAN Mark	3	447333	LEIST, JAMES R	3	362787

## Equipment

HES Unit #	Distance-1 way	HES Unit #	Distance-1 way	HES Unit #	Distance-1 way	HES Unit #	Distance-1 way
10616651C	120 mile	10867425	120 mile	10897891	120 mile		
10995025	120 mile	11259882	120 mile				

## Job Hours

Date	On Location Hours	Operating Hours	Date	On Location Hours	Operating Hours	Date	On Location Hours	Operating Hours
10-11-10	3	2						

TOTAL Total is the sum of each column separately

## Job

Formation Name	Job	Date	Time	Time Zone
Formation Depth (MD)	Top Bottom	Called Out	11 - Oct - 2010	01:00 MST
Form Type	BHST	On Location	11 - Oct - 2010	01:00 MST
Job depth MD	769. ft	Job Depth TVD	769. ft	Job Started
Water Depth		Wk Ht Above Floor	1. ft	Job Completed
Perforation Depth (MD)	From To	Departed Loc	11 - Oct - 2010	05:00 MST

## Well Data

Description	New / Used	Max pressure psig	Size in	ID in	Weight lbm/ft	Thread	Grade	Top MD ft	Bottom MD ft	Top TVD ft	Bottom TVD ft
-------------	------------	-------------------	---------	-------	---------------	--------	-------	-----------	--------------	------------	---------------

Sales/Rental/3<sup>rd</sup> Party (HES)

Description	Qty	Qty uom	Depth	Supplier
PLUG,CMTG,TOP,9 5/8,HWE,8.16 MIN/9.06 MA	1	EA		
R/A DENSOMETER W/CHART RECORDER,/JOB,ZI	1	JOB		
PORT. DATA ACQUIS. W/OPTICEM RT W/HES	1	EA		
ADC (AUTO DENSITY CTRL) SYS, /JOB,ZI	1	JOB		

## Tools and Accessories

Type	Size	Qty	Make	Depth	Type	Size	Qty	Make	Depth	Type	Size	Qty	Make
Guide Shoe					Packer					Top Plug	9.625	1	
Float Shoe					Bridge Plug					Bottom Plug			
Float Collar					Retainer					SSR plug set			
Insert Float										Plug Container	9.625	1	
Stage Tool										Centralizers			

## Miscellaneous Materials

Gelling Agt	Conc	Surfactant	Conc	Acid Type	Qty	Conc	%
Treatment Fld	Conc	Inhibitor	Conc	Sand Type	Size	Qty	

Fluid Data										
Stage/Plug #: 1										
Fluid #	Stage Type	Fluid Name	Qty	Qty uom	Mixing Density lbm/gal	Yield ft <sup>3</sup> /sk	Mix Fluid Gal/sk	Rate bbl/min	Total Mix Fluid Gal/sk	
1	Water Spacer			bbl	.	.0	.0	.0		
2	VersaCem Lead Slurry	VERSACEM (TM) SYSTEM (452010)		sacks	12.3	2.38	13.77		13.77	
	13.77 Gal	FRESH WATER								
3	SwiftCem Tail Slurry	SWIFTCEM (TM) SYSTEM (452990)		sacks	14.2	1.43	6.85		6.85	
	6.85 Gal	FRESH WATER								
4	Displacement			bbl	.	.0	.0	.0		
Calculated Values		Pressures		Volumes						
Displacement	56	Shut In: Instant		Lost Returns		Cement Slurry	81	Pad		
Top Of Cement		5 Min		Cement Returns	22	Actual Displacement	56	Treatment		
Frac Gradient		15 Min		Spacers		Load and Breakdown		Total Job		
Rates										
Circulating		Mixing		Displacement		Avg. Job				
Cement Left In Pipe	Amount	0 ft	Reason	Shoe Joint						
Frac Ring # 1 @	ID		Frac ring # 2 @	ID		Frac Ring # 3 @	ID		Frac Ring # 4 @	ID
The Information Stated Herein Is Correct				Customer Representative Signature						

*The Road to Excellence Starts with Safety*

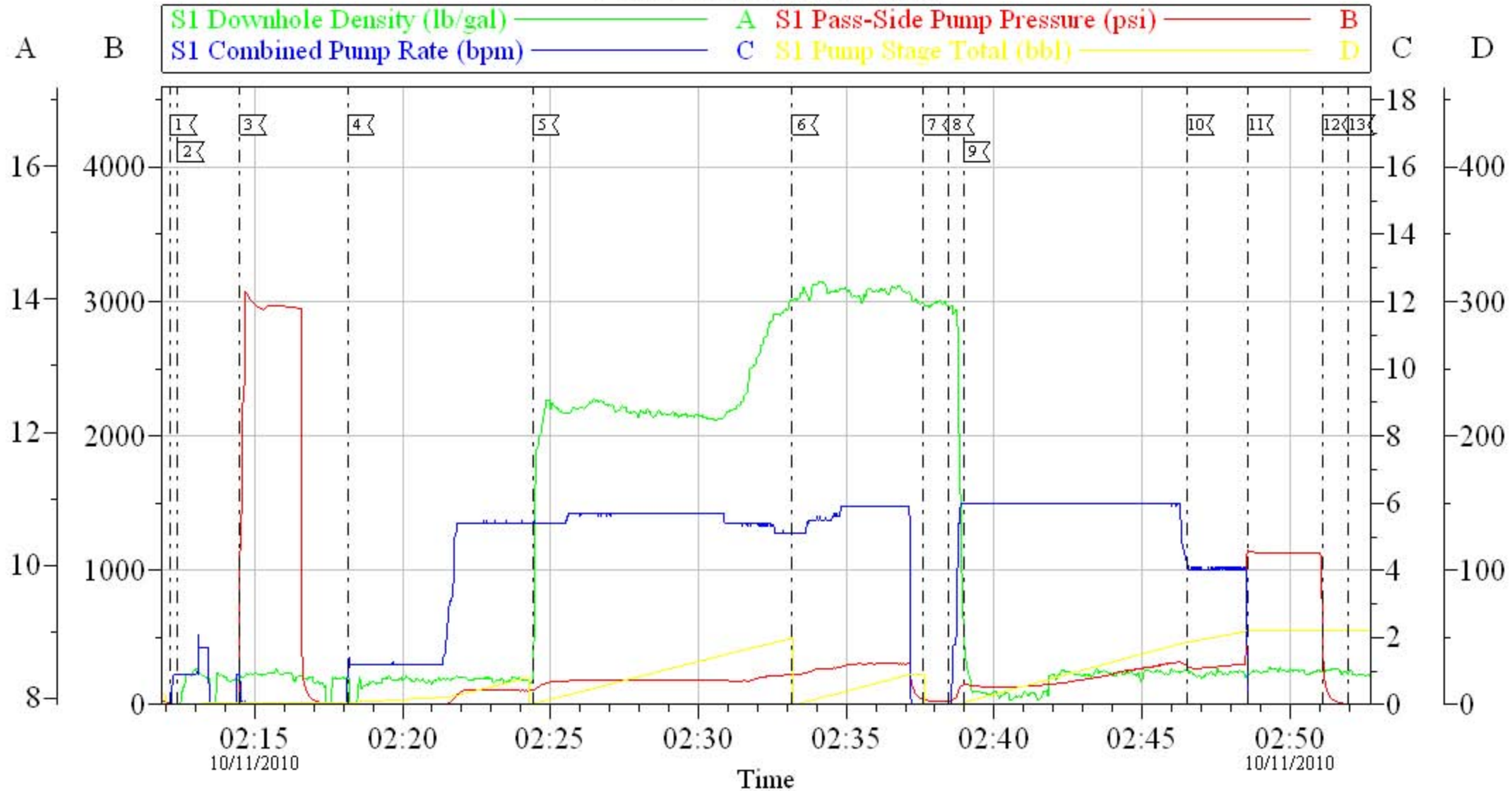
<b>Sold To #:</b> 343492	<b>Ship To #:</b> 2810707	<b>Quote #:</b>	<b>Sales Order #:</b> 7676503
<b>Customer:</b> BILL BARRETT CORPORATION E-BILL		<b>Customer Rep:</b> South, Jody	
<b>Well Name:</b> GGU MILLER	<b>Well #:</b> 24C-32-691	<b>API/UWI #:</b> 05-045-19429	
<b>Field:</b> MAMM CREEK	<b>City (SAP):</b> Silt	<b>County/Parish:</b> Garfield	<b>State:</b> Colorado
<b>Legal Description:</b>			
<b>Lat:</b> N 39.48 deg. OR N 39 deg. 28 min. 49.386 secs.		<b>Long:</b> W 107.579 deg. OR W -108 deg. 25 min. 16.046 secs.	
<b>Contractor:</b> Pro Petro		<b>Rig/Platform Name/Num:</b> Pro Petro	
<b>Job Purpose:</b> Cement Surface Casing			<b>Ticket Amount:</b>
<b>Well Type:</b> Development Well		<b>Job Type:</b> Cement Surface Casing	
<b>Sales Person:</b> METLI, MARSHALL		<b>Srv Supervisor:</b> HUGENTOBLE, LOGAN	<b>MBU ID Emp #:</b> 447333

Activity Description	Date/Time	Cht #	Rate bbl/min	Volume bbl		Pressure psig		Comments
				Stage	Total	Tubing	Casing	
Assessment Of Location Safety Meeting	10/11/2010 01:00							WITH ALL HES PERSONNEL
Pre-Rig Up Safety Meeting	10/11/2010 01:30							WITH ALL HES PERSONNEL
Rig-Up Completed	10/11/2010 01:45							RIG UP WAS COMPLETED AT THE END OF LAST JOB, CREW STAYED ON LOCATION
Pre-Job Safety Meeting	10/11/2010 02:00							WITH ALL ON LOCATION PERSONNEL
Start Job	10/11/2010 02:12							JOB WAS PUMPED OFF LINE, HOLE DRILLED WITH AIR, NO FLUID IN WELLBORE AT TIME OF CEMENT, PIPE STATIC AT TIME OF CEMENT JOB., NO QUICK LATCH USED ON CEMENT HEAD
Pressure Test	10/11/2010 02:14		0.5	0.5		2500.0		2500
Pump Spacer 1	10/11/2010 02:18		5	20			98.0	FRESH WATER
Pump Lead Cement	10/11/2010 02:24		5.7	50.9			180.0	120 SKS, 12.3 PPG, 2.37 FT3/SK, 13.76 GAL/SK
Pump Tail Cement	10/11/2010 02:33		6	30.6			290.0	120 SKS, 14.2 PPG, 1.43 FT3/SK, 6.88 GAL/SK
Shutdown	10/11/2010 02:37							
Drop Top Plug	10/11/2010 02:38							AWAY

Activity Description	Date/Time	Cht #	Rate bbl/ min	Volume bbl		Pressure psig		Comments
				Stage	Total	Tubing	Casing	
Pump Displacement	10/11/2010 02:39		6	56			267.0	FRESH WATER
Slow Rate	10/11/2010 02:46		4	46			280.0	TO BUMP PLUG
Bump Plug	10/11/2010 02:48						1108. 0	PLUG BUMPED
Check Floats	10/11/2010 02:51							THE FLOATS ARE HOLDING
End Job	10/11/2010 02:51							22 BBLS TO SURFACE
Pre-Rig Down Safety Meeting	10/11/2010 03:30							WITH ALL HES PERSONNEL
Rig-Down Completed	10/11/2010 05:00							RIG DOWN
Comment	10/11/2010 05:01							THANKYOU FOR USING HALLIBURTON CEMENT, LOGAN HUGENTOBLE AND CREW. USED VAC TRUCK TO TOP OFF ALL WELLS ON PAD.

# BILL BARRETT

## 9 5/8 SURFACE CASING



Local Event Log					
1	START JOB	02:12:09	2	FILL LINES	02:12:24
3	PRESSURE TEST	02:14:30	4	PUMP H2O SPACER	02:18:10
5	PUMP LEAD CEMENT	02:24:25	6	PUMP TAIL CEMENT	02:33:11
7	SHUT DOWN	02:37:37	8	DROP PLUG	02:38:27
9	PUMP DISPLACEMENT	02:38:59	10	SLOW RATE	02:46:33
11	BUMP PLUG	02:48:34	12	CHECK FLOATS	02:51:07
13	END JOB	02:51:59			

Customer: BILLBARRETT	Job Date: 11-Oct-2010	Sales Order #: 7676503
Well Description: 24C-32-691	Job Type: SURFACE	ADC Used: YES
Company Rep: JODY SOUTH	Cement Supervisor: LOGAN HUGENTOBLE	Elite #4: JAMES LEIST

**HALLIBURTON**  
 OptiCern v6.3.4  
 11-Oct-10 03:27