
BILL BARRETT CORPORATION E-BILL

**GGU MILLER 24D-32-691
MAMM CREEK
Garfield County , Colorado**

Cement Surface Casing
10-Oct-2010

Post Job Report

The Road to Excellence Starts with Safety

Sold To #: 343492		Ship To #: 2810706		Quote #:		Sales Order #: 7676495	
Customer: BILL BARRETT CORPORATION E-BILL				Customer Rep: South, Jody			
Well Name: GGU MILLER			Well #: 24D-32-691			API/UWI #: 05-045-19427	
Field: MAMM CREEK		City (SAP): SILT		County/Parish: Garfield			State: Colorado
Lat: N 39.48 deg. OR N 39 deg. 28 min. 49.537 secs.				Long: W 107.579 deg. OR W -108 deg. 25 min. 16.097 secs.			
Contractor: Pro Petro			Rig/Platform Name/Num: Pro Petro				
Job Purpose: Cement Surface Casing							
Well Type: Development Well			Job Type: Cement Surface Casing				
Sales Person: METLI, MARSHALL			Srvc Supervisor: HUGENTOBLE, LOGAN			MBU ID Emp #: 447333	

Job Personnel

HES Emp Name	Exp Hrs	Emp #	HES Emp Name	Exp Hrs	Emp #	HES Emp Name	Exp Hrs	Emp #
DOUT, JACOB J		430298	HUGENTOBLE, LOGAN Mark		447333	LEIST, JAMES R		362787

Equipment

HES Unit #	Distance-1 way	HES Unit #	Distance-1 way	HES Unit #	Distance-1 way	HES Unit #	Distance-1 way
10616651C	120 mile	10783493	120 mile	10822007	120 mile	10995025	120 mile
11259882	120 mile						

Job Hours

Date	On Location Hours	Operating Hours	Date	On Location Hours	Operating Hours	Date	On Location Hours	Operating Hours
10-10-10	3	2						
TOTAL			Total is the sum of each column separately					

Job

Formation Name					Date				Time	Time Zone		
Formation Depth (MD)		Top	Bottom		Called Out				10 - Oct - 2010	08:00	MST	
Form Type			BHST		On Location				10 - Oct - 2010	09:00	MST	
Job depth MD		765. ft		Job Depth TVD		765. ft		Job Started		10 - Oct - 2010	10:07	MST
Water Depth				Wk Ht Above Floor		. ft		Job Completed		10 - Oct - 2010	10:46	MST
Perforation Depth (MD)		From	To		Departed Loc				10 - Oct - 2010	11:45	MST	

Well Data

Description	New / Used	Max pressure psig	Size in	ID in	Weight lbm/ft	Thread	Grade	Top MD ft	Bottom MD ft	Top TVD ft	Bottom TVD ft
-------------	------------	-------------------	---------	-------	---------------	--------	-------	-----------	--------------	------------	---------------

Sales/Rental/3rd Party (HES)

Description	Qty	Qty uom	Depth	Supplier
PLUG,CMTG,TOP,9 5/8,HWE,8.16 MIN/9.06 MA	1	EA		
PORT. DATA ACQUIS. W/OPTICEM RT W/HES	1	EA		
ADC (AUTO DENSITY CTRL) SYS, /JOB,ZI	1	JOB		

Tools and Accessories

Type	Size	Qty	Make	Depth	Type	Size	Qty	Make	Type	Size	Qty	Make
Guide Shoe					Packer				Top Plug	9.625	1	
Float Shoe					Bridge Plug				Bottom Plug			
Float Collar					Retainer				SSR plug set			
Insert Float									Plug Container	9.625	1	
Stage Tool									Centralizers			

Miscellaneous Materials

Gelling Agt	Conc	Surfactant	Conc	Acid Type	Qty	Conc	%
Treatment Fld	Conc	Inhibitor	Conc	Sand Type	Size	Qty	

Fluid Data										
Stage/Plug #: 1										
Fluid #	Stage Type	Fluid Name	Qty	Qty uom	Mixing Density lbm/gal	Yield ft ³ /sk	Mix Fluid Gal/sk	Rate bbl/min	Total Mix Fluid Gal/sk	
1	Water Spacer		20.00	bbl	.	.0	.0	.0		
2	VersaCem Lead Slurry	VERSACEM (TM) SYSTEM (452010)	120.0	sacks	12.3	2.38	13.77		13.77	
	13.77 Gal	FRESH WATER								
3	SwiftCem Tail Slurry	SWIFTCEM (TM) SYSTEM (452990)	120.0	sacks	14.2	1.43	6.85		6.85	
	6.85 Gal	FRESH WATER								
4	Displacement		55.00	bbl	.	.0	.0	.0		
Calculated Values		Pressures		Volumes						
Displacement	55	Shut In: Instant		Lost Returns	0	Cement Slurry	81	Pad		
Top Of Cement	SURFACE	5 Min		Cement Returns	25	Actual Displacement	55	Treatment		
Frac Gradient		15 Min		Spacers	20	Load and Breakdown		Total Job		
Rates										
Circulating	0	Mixing	5	Displacement	6	Avg. Job	5.5			
Cement Left In Pipe	Amount	44.5 ft	Reason	Shoe Joint						
Frac Ring # 1 @	ID	Frac ring # 2 @	ID	Frac Ring # 3 @	ID	Frac Ring # 4 @	ID			
The Information Stated Herein Is Correct				Customer Representative Signature						

The Road to Excellence Starts with Safety

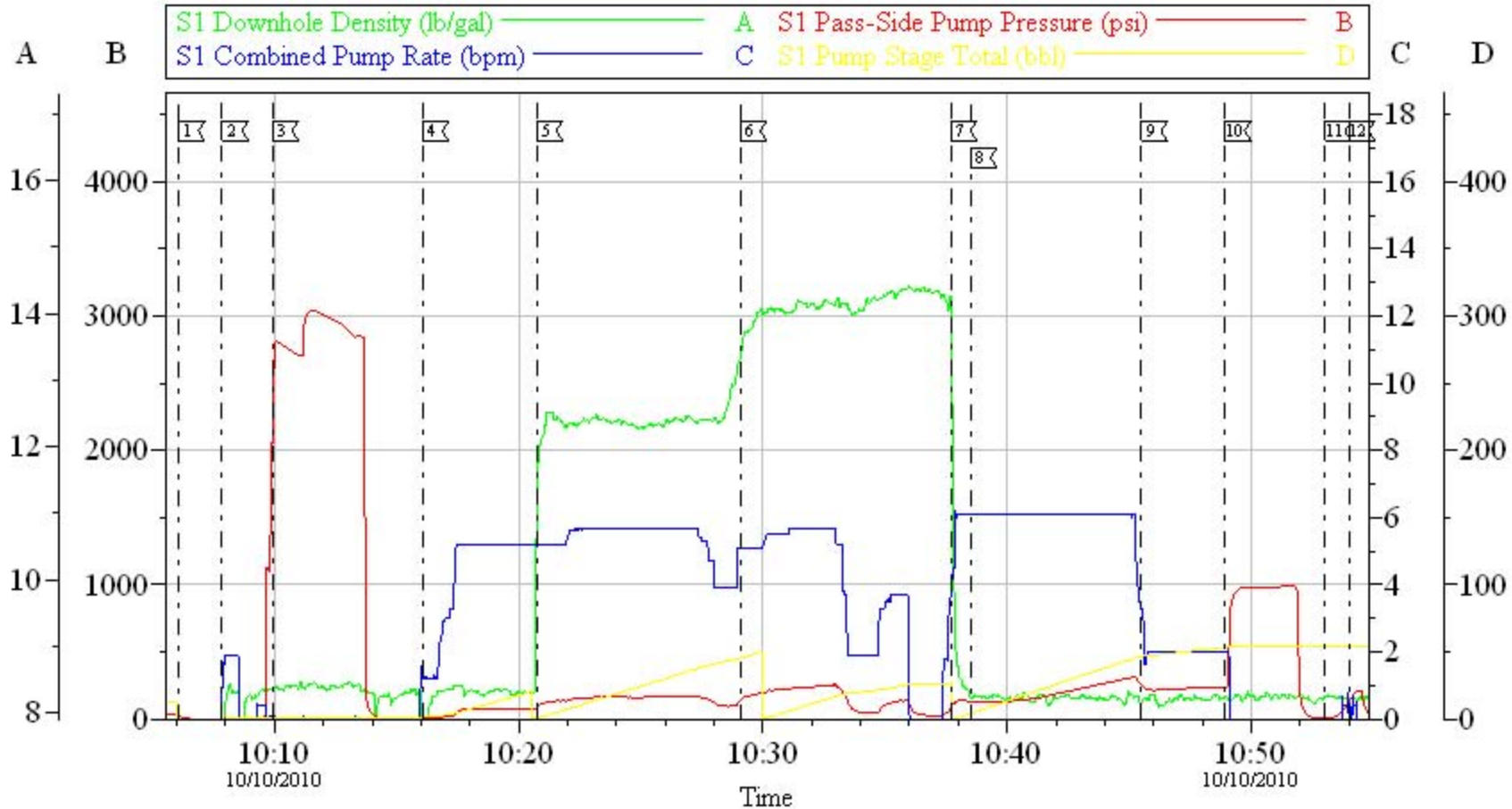
Sold To #: 343492	Ship To #: 2810706	Quote #:	Sales Order #: 7676495
Customer: BILL BARRETT CORPORATION E-BILL		Customer Rep: South, Jody	
Well Name: GGU MILLER	Well #: 24D-32-691	API/UWI #: 05-045-19427	
Field: MAMM CREEK	City (SAP): SILT	County/Parish: Garfield	State: Colorado
Legal Description:			
Lat: N 39.48 deg. OR N 39 deg. 28 min. 49.537 secs.		Long: W 107.579 deg. OR W -108 deg. 25 min. 16.097 secs.	
Contractor: Pro Petro		Rig/Platform Name/Num: Pro Petro	
Job Purpose: Cement Surface Casing			Ticket Amount:
Well Type: Development Well		Job Type: Cement Surface Casing	
Sales Person: METLI, MARSHALL		Srv Supervisor: HUGENTOBLE, LOGAN	MBU ID Emp #: 447333

Activity Description	Date/Time	Cht #	Rate bbl/min	Volume bbl		Pressure psig		Comments
				Stage	Total	Tubing	Casing	
Assessment Of Location Safety Meeting	10/10/2010 09:00							WITH ALL HES PERSONNEL
Pre-Rig Up Safety Meeting	10/10/2010 09:15							WITH ALL HES PERSONNEL
Rig-Up Completed	10/10/2010 09:40							RIG UP WAS COMPLETED AT THE END OF LAST JOB, CREW STAYED ON LOCATION
Pre-Job Safety Meeting	10/10/2010 09:45							WITH ALL ON LOCATION PERSONNEL
Start Job	10/10/2010 10:07							JOB WAS PUMPED OFF LINE, HOLE DRILLED WITH AIR, NO FLUID IN WELLBORE AT TIME OF CEMENT, PIPE STATIC AT TIME OF CEMENT JOB., NO QUICK LATCH USED ON CEMENT HEAD
Pressure Test	10/10/2010 10:09		0.5	0.5		2500.0		2500
Pump Spacer 1	10/10/2010 10:15		5	20			84.0	FRESH WATER
Pump Lead Cement	10/10/2010 10:20		5	50.9			145.0	120 SKS, 12.3 PPG, 2.37 FT3/SK, 13.76 GAL/SK 50.9BBLS
Pump Tail Cement	10/10/2010 10:30		5	30.6			243.0	120 SKS, 14.2 PPG, 1.43 FT3/SK, 6.88 GAL/SK 30.6BBLS
Shutdown	10/10/2010 10:36							
Drop Top Plug	10/10/2010 10:37							AWAY

Activity Description	Date/Time	Cht #	Rate bbl/min	Volume bbl		Pressure psig		Comments
				Stage	Total	Tubing	Casing	
Pump Displacement	10/10/2010 10:38		6	45.7			240.0	FRESH WATER
Slow Rate	10/10/2010 10:46		2	55.7			224.0	TO BUMP PLUG
Bump Plug	10/10/2010 10:50		2				901.0	PLUG BUMPED
Check Floats	10/10/2010 10:52							THE FLOATS ARE HOLDING 1.5 BBLS BACK
End Job	10/10/2010 10:53							
Pre-Rig Down Safety Meeting	10/10/2010 10:55							WITH ALL HES PERSONNEL
Rig-Down Completed	10/10/2010 11:15							RIG DOWN AND SET UP FOR NEXT JOB
Comment	10/10/2010 11:16							THANKYOU FOR USING HALLIBURTON CEMENT, LOGAN HUGENTOBLE AND CREW 25BBLS TO SURFACE

BILL BARRETT

9 5/8 SURFACE CASING



Local Event Log

1 FILL LINES	10:06:04	2 PUMP SPACER	10:07:51	3 STARTJOB	10:09:55
4 PUMP LEAD CEMENT	10:16:04	5 TEST LINES	10:20:44	6 PUMP TAIL CEMENT	10:29:05
7 SHUT DOWN/DROP PLUG	10:37:41	8 PUMP DISPLACEMENT	10:38:31	9 SLOW RATE	10:45:30
10 LAND PLUG	10:48:55	11 CHECK FLOATS	10:53:02	12 END JOB	10:53:59

Customer: BILL BARRETT
 Well Description: GGU MILLER 24D-32-691
 Company Rep: JODY SOUTH

Job Date: 10-Oct-2010
 Job Type: SURFACE
 Cement Supervisor: LOGAN HUGENTOBLE

Sales Order #: 7676495
 ADC Used: YES
 Elite #: 4

HALLIBURTON
 OptiCem v6.3.4
 10-Oct-10 11:36