
BILL BARRETT CORPORATION E-BILL

**GGU MILLER FED 34A-32-691
MAMM CREEK
Garfield County , Colorado**

Cement Surface Casing
06-Oct-2010

Post Job Summary

The Road to Excellence Starts with Safety

Sold To #: 343492		Ship To #: 2810708		Quote #:		Sales Order #: 7676508	
Customer: BILL BARRETT CORPORATION E-BILL				Customer Rep: South, Jody			
Well Name: GGU MILLER FED			Well #: 34A-32-691			API/UWI #: 05-045-19432	
Field: MAMM CREEK		City (SAP): SILT		County/Parish: Garfield			State: Colorado
Lat: N 39.48 deg. OR N 39 deg. 28 min. 49.361 secs.				Long: W 107.579 deg. OR W -108 deg. 25 min. 16.169 secs.			
Contractor: PROPETRO			Rig/Platform Name/Num: PRO PETRO				
Job Purpose: Cement Surface Casing							
Well Type: Development Well			Job Type: Cement Surface Casing				
Sales Person: METLI, MARSHALL			Srv Supervisor: MUHLESTEIN, RYAN			MBU ID Emp #: 453609	

Job Personnel

HES Emp Name	Exp Hrs	Emp #	HES Emp Name	Exp Hrs	Emp #	HES Emp Name	Exp Hrs	Emp #
BANKS, BRENT A	4	371353	HAYES, DIRK A	4	336768	MUHLESTEIN, RYAN Herrick	4	453609
STILLSON, ERIC W	4	393789						

Equipment

HES Unit #	Distance-1 way	HES Unit #	Distance-1 way	HES Unit #	Distance-1 way	HES Unit #	Distance-1 way
10616651C	120 mile	10713212	120 mile	10741119	120 mile	10995025	120 mile
11259886	120 mile						

Job Hours

Date	On Location Hours	Operating Hours	Date	On Location Hours	Operating Hours	Date	On Location Hours	Operating Hours
10/06/2010	5	2						

TOTAL	Total is the sum of each column separately							
--------------	--	--	--	--	--	--	--	--

Job

Formation Name	Top	Bottom	Called Out	Date	Time	Time Zone
Formation Depth (MD)			On Location	06 - Oct - 2010	00:30	MST
Form Type		BHST	Job Started	06 - Oct - 2010	05:00	MST
Job depth MD	790. ft	Job Depth TVD	Job Completed	06 - Oct - 2010	07:50	MST
Water Depth		Wk Ht Above Floor	Departed Loc	06 - Oct - 2010	08:44	MST
Perforation Depth (MD)	From	To		06 - Oct - 2010	10:30	MST

Well Data

Description	New / Used	Max pressure psig	Size in	ID in	Weight lbm/ft	Thread	Grade	Top MD ft	Bottom MD ft	Top TVD ft	Bottom TVD ft
-------------	------------	-------------------	---------	-------	---------------	--------	-------	-----------	--------------	------------	---------------

Sales/Rental/3rd Party (HES)

Description	Qty	Qty uom	Depth	Supplier
PLUG,CMTG,TOP,9 5/8,HWE,8.16 MIN/9.06 MA	1	EA		
R/A DENSOMETER W/CHART RECORDER,/JOB,ZI	1	JOB		
ADC (AUTO DENSITY CTRL) SYS, /JOB,ZI	1	JOB		
PORT. DATA ACQUIS. W/OPTICEM RT W/HES	1	EA		

Tools and Accessories

Type	Size	Qty	Make	Depth	Type	Size	Qty	Make	Depth	Type	Size	Qty	Make
Guide Shoe					Packer					Top Plug	9.625	1	HES
Float Shoe					Bridge Plug					Bottom Plug			
Float Collar					Retainer					SSR plug set			
Insert Float										Plug Container	9.625	1	HES
Stage Tool										Centralizers			

Miscellaneous Materials

Gelling Agt	Conc	Surfactant	Conc	Acid Type	Qty	Conc	%
Treatment Fld	Conc	Inhibitor	Conc	Sand Type	Size	Qty	

Fluid Data									
Stage/Plug #: 1									
Fluid #	Stage Type	Fluid Name	Qty	Qty uom	Mixing Density lbm/gal	Yield ft ³ /sk	Mix Fluid Gal/sk	Rate bbl/min	Total Mix Fluid Gal/sk
1	WATER SPACER		20.00	bbl	8.4	.0	.0	5.5	
2	Lead Cement	VERSACEM (TM) SYSTEM (452010)	120.0	sacks	12.3	2.37	13.76	5.5	13.42
	13.418 Gal	FRESH WATER							
3	Tail Cement	SWIFTCES (TM) SYSTEM (452990)	120.0	sacks	14.2	1.43	6.88	5.5	6.72
	6.715 Gal	FRESH WATER							
4	DISPLACEMENT		56.00	bbl	8.4	.0	.0	5.5	
Calculated Values		Pressures		Volumes					
Displacement	56	Shut In: Instant		Lost Returns	0	Cement Slurry	81	Pad	
Top Of Cement	0	5 Min		Cement Returns	25	Actual Displacement	56	Treatment	
Frac Gradient		15 Min		Spacers	20	Load and Breakdown		Total Job	
Rates									
Circulating	0	Mixing	5.5	Displacement	5.5	Avg. Job	5		
Cement Left In Pipe	Amount	45 ft	Reason	Shoe Joint					
Frac Ring # 1 @	ID	Frac ring # 2 @	ID	Frac Ring # 3 @	ID	Frac Ring # 4 @	ID		
The Information Stated Herein Is Correct				Customer Representative Signature					

The Road to Excellence Starts with Safety

Sold To #: 343492	Ship To #: 2810708	Quote #:	Sales Order #: 7676508
Customer: BILL BARRETT CORPORATION E-BILL		Customer Rep: South, Jody	
Well Name: GGU MILLER FED	Well #: 34A-32-691	API/UWI #: 05-045-19432	
Field: MAMM CREEK	City (SAP): SILT	County/Parish: Garfield	State: Colorado
Legal Description:			
Lat: N 39.48 deg. OR N 39 deg. 28 min. 49.361 secs.		Long: W 107.579 deg. OR W -108 deg. 25 min. 16.169 secs.	
Contractor: PROPETRO		Rig/Platform Name/Num: PRO PETRO	
Job Purpose: Cement Surface Casing			Ticket Amount:
Well Type: Development Well		Job Type: Cement Surface Casing	
Sales Person: METLI, MARSHALL		Srv Supervisor: MUHLESTEIN, RYAN	MBU ID Emp #: 453609

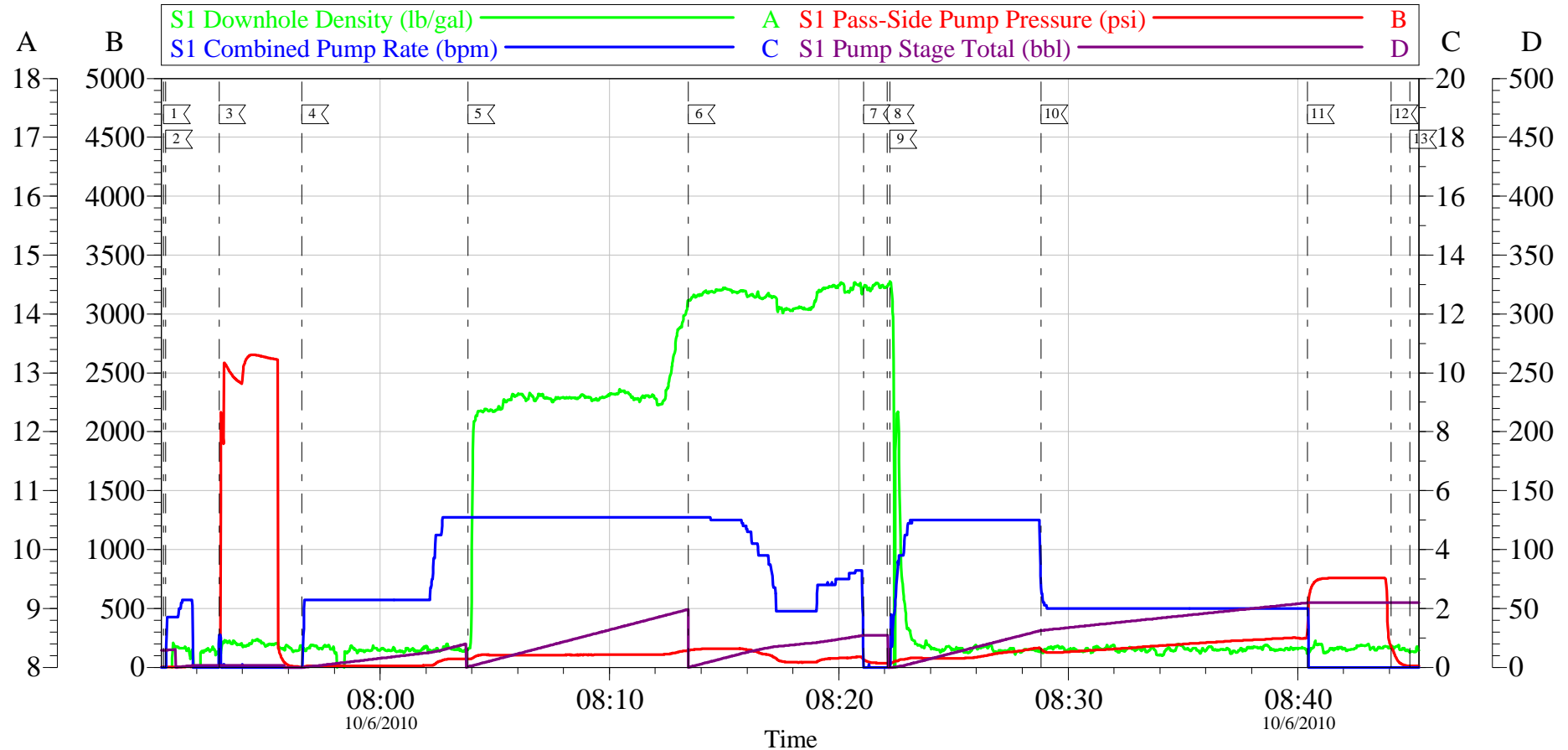
Activity Description	Date/Time	Cht #	Rate bbl/min	Volume bbl		Pressure psig		Comments
				Stage	Total	Tubing	Casing	
Call Out	10/06/2010 00:30							9 5/8 SURFACE, BILL BARRET PRO PETRO, GGU MILLER FED 34A-32-691.
Pre-Convoy Safety Meeting	10/06/2010 02:45							OBSERVE ALL SAFE DRIVING PROCEDURES, BULK TRUCK NOT YET LOADED WILL MEET ON LOCATION
Arrive At Loc	10/06/2010 05:00							BULK TRUCK ARRIVED ON LOCATION AT 07:15.
Assessment Of Location Safety Meeting	10/06/2010 05:15							REVIEWED EMERGENCY PLAN, ASSESSED WORK AREA AND SPOTTED EQUIPMENT.
Pre-Rig Up Safety Meeting	10/06/2010 05:30							WALKED THROUGH RIG UP LOOKING FOR HAZARDS.
Rig-Up Equipment	10/06/2010 06:00							1 PICK UP, 1 HT400 PUMP TRUCK, 1 660 BULK CEMENT TRUCK, 1 SCREW IN HEAD WITH PLUG,
Pre-Job Safety Meeting	10/06/2010 07:40							ENTIRE CREW AND RIG CREW.
Start Job	10/06/2010 07:50							TD 790 TP 771.04 SJ 44.39 FC 726.65, 9 5/8 36# CASING IN 12 3/8 HOLE. AIR DRILLED HOLE.
Pump Water	10/06/2010 07:50		1	1			20.0	FILL LINES BEFORE TESTING

Activity Description	Date/Time	Cht #	Rate bbl/min	Volume bbl		Pressure psig		Comments
				Stage	Total	Tubing	Casing	
Pressure Test	10/06/2010 07:52		0.5	0.1			2654.0	HELD PRESSURE FOR 2 MIN, PRESSURE HELD, NO LEAKS.
Pump Spacer 1	10/06/2010 07:56		5.5	20			70.0	FRESH WATER, PUMPED AT 2.3 BPM UNTIL CEMENT TUB UP TO WEIGHT AND WEIGHED WITH SCALES, SPED RATE TO 5.5 BPM AT 13 BBLS GONE.
Pump Lead Cement	10/06/2010 08:03		5.5	51			158.0	120 SKS VERSACEM, 12.3 PPG, 2.38 CUFT/SK, 13.77 GAL/SK.
Pump Tail Cement	10/06/2010 08:13		5.5	30			176.0	120 SKS VERSACEM, 14.2 PPG, 1.43 CUFT/SK, 6.85 GAL/SK.
Shutdown	10/06/2010 08:21							
Drop Top Plug	10/06/2010 08:22							VARIFIED PLUG LEFT CONTAINER.
Pump Displacement	10/06/2010 08:22		5.5	56			153.0	FRESH WATER, CEMENT TO SURFACE AT 31 BBLS GONE, 25 BBLS OF CEMENT TO SURFACE.
Slow Rate	10/06/2010 08:28		2	30			125.0	SLOWED RATE TO 2 BPM TO ALLOW SUCK TRUCK TO DUMP WATER AND COME BACK TO SUCK UP CEMENT TO TOP OFF PREVIOUS WELLS. DID NOT USE ANY SUGAR.
Bump Plug	10/06/2010 08:40		2	56			255.0	PLUG LANDED AT 255 PSI, BUMPED UP TO 750 PSI AND HELD FOR 2 MIN.
Check Floats	10/06/2010 08:44							FLOATS HELD, WHEN RELEASED PRESSURE GOT 2 BBL OF WATER BACK TO TRUCK.

Activity Description	Date/Time	Cht #	Rate bbl/ min	Volume bbl		Pressure psig		Comments
				Stage	Total	Tubing	Casing	
End Job	10/06/2010 08:45							GOOD RETURNS THROUGHOUT, DID NOT RECIPROCATATE PIPE.
Post-Job Safety Meeting (Pre Rig-Down)	10/06/2010 08:50							ENTIRE CREW
Rig-Down Equipment	10/06/2010 09:30							
Pre-Convoy Safety Meeting	10/06/2010 10:10							ENTIRE CREW, OBSERVE ALL SAFE DRIVING PROCEDURES
Crew Leave Location	10/06/2010 10:30							THANK YOU FOR USING HALLIBURTON, RYAN MUHLESTEIN AND CREW.

BILL BARRET

9 5/8 SURFACE



Customer:	BILL BARRETT	Job Date:	06-Oct-2010	Sales Order #:	7676508
Well Description:	GGU MILLER FED 34A-32-691	Job Type:	SURFACE	ADC Used:	YES
Company Rep:	JODY SOUTH	Cement Supervisor:	RYAN MUHLESTEIN	Elite #:	4 BRENT BANKS

OptiCem v6.4.2
06-Oct-10 09:06