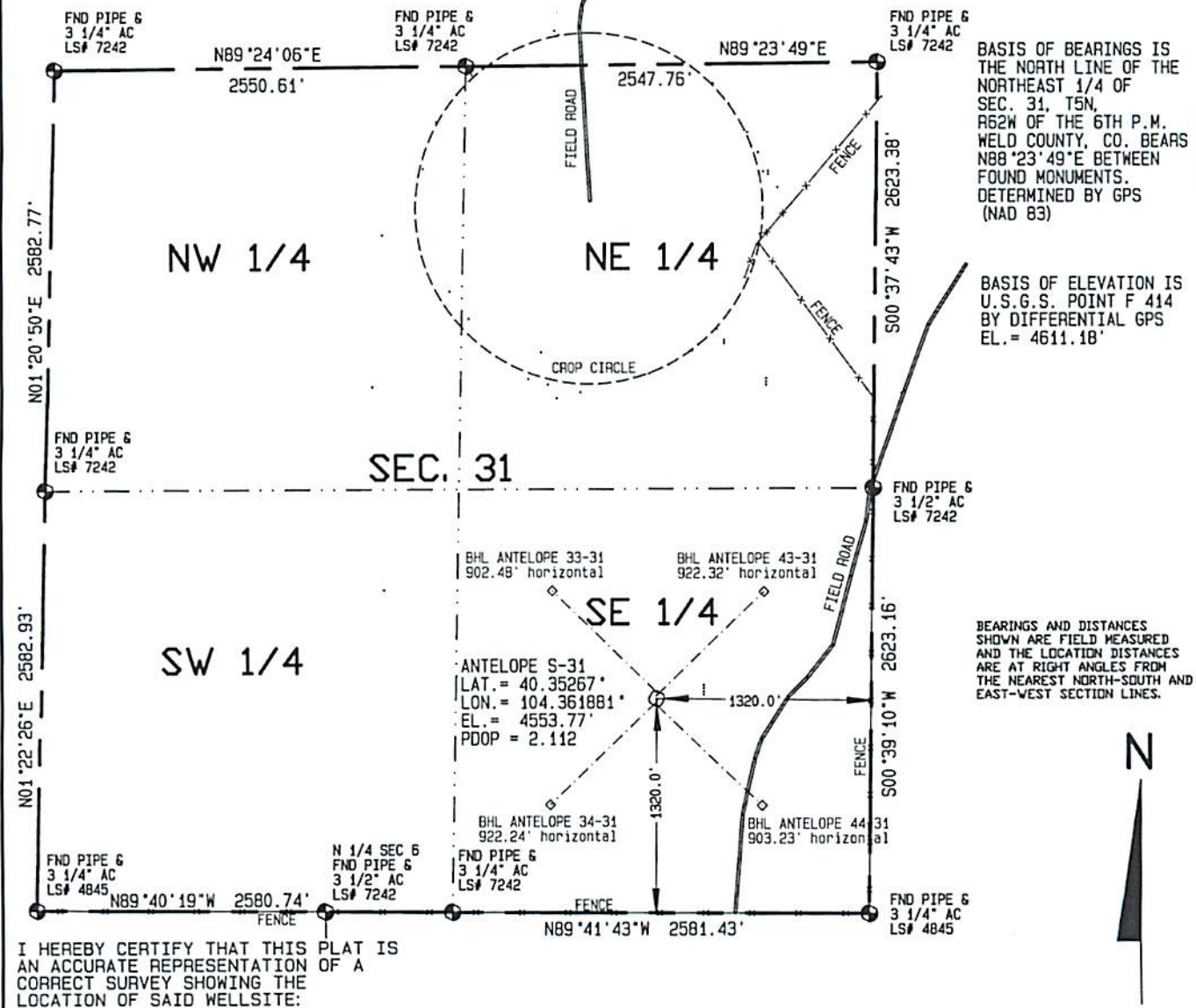


SURFACE HOLE LOCATIONS						BOTTOM HOLE LOCATIONS				
WELL	LAT.	LONG.	EL.	FSL	FEL	WELL	LAT.	LONG.	N/S	E/W
33-31	40.35278°	104.36181°	4556.80'	1360.0'	1320.5'	33-31	40.35452°	104.36412°	1980.0' FSL	1980.0' FEL
43-41	40.35272°	104.36181°	4554.95'	1340.0'	1320.2'	43-31	40.35445°	104.35938°	1980.0' FSL	660.0' FEL
S-31	40.35267°	104.36181°	4553.77'	1320.0'	1320.0'	S-31	40.35267°	104.36181°	1320.0' FSL	1320.0' FEL
34-31	40.35261°	104.36181°	4552.45'	1300.0'	1319.7'	34-31	40.35090°	104.36424°	660.0' FSL	1980.0' FEL
44-31	40.35255°	104.36181°	4552.08'	1280.0'	1319.5'	44-31	40.35083°	104.35950°	660.0' FSL	660.0' FEL

Visible improvements within 400 feet of the location include:
NONE



BASIS OF BEARINGS IS THE NORTH LINE OF THE NORTHEAST 1/4 OF SEC. 31, T5N, R62W OF THE 6TH P.M. WELD COUNTY, CO. BEARS N88°23'49"E BETWEEN FOUND MONUMENTS. DETERMINED BY GPS (NAD 83)

BASIS OF ELEVATION IS U.S.G.S. POINT F 414 BY DIFFERENTIAL GPS EL. = 4611.18'

BEARINGS AND DISTANCES SHOWN ARE FIELD MEASURED AND THE LOCATION DISTANCES ARE AT RIGHT ANGLES FROM THE NEAREST NORTH-SOUTH AND EAST-WEST SECTION LINES.



I HEREBY CERTIFY THAT THIS PLAT IS AN ACCURATE REPRESENTATION OF A CORRECT SURVEY SHOWING THE LOCATION OF SAID WELLSITE:

1000 500 0 1000

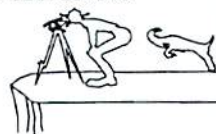


Scale 1" = 1000'

Dan Griggs PLS# 38018

CONTRACT SURVEYORS, LTD.
COMPLETE SURVEYING AND GLOBAL POSITIONING

2133 SOUTH BELLAIRE STREET #14
DENVER COLORADO 80222
(303) 756-3595



DATE OF FIELD WORK

SEPTEMBER 8, 2010

DATE OF DRAWING

DECEMBER 8, 2010

ANTELOPE S-31 PAD SITE 44-31 *see 1/5/11*

NE 1/4 SE 1/4 SEC. 31, T5N, R62W

BONANZA CREEK ENERGY OPERATING COMPANY, LLC

CSL# 10104-56 REVISED

WELD COUNTY, COLORADO