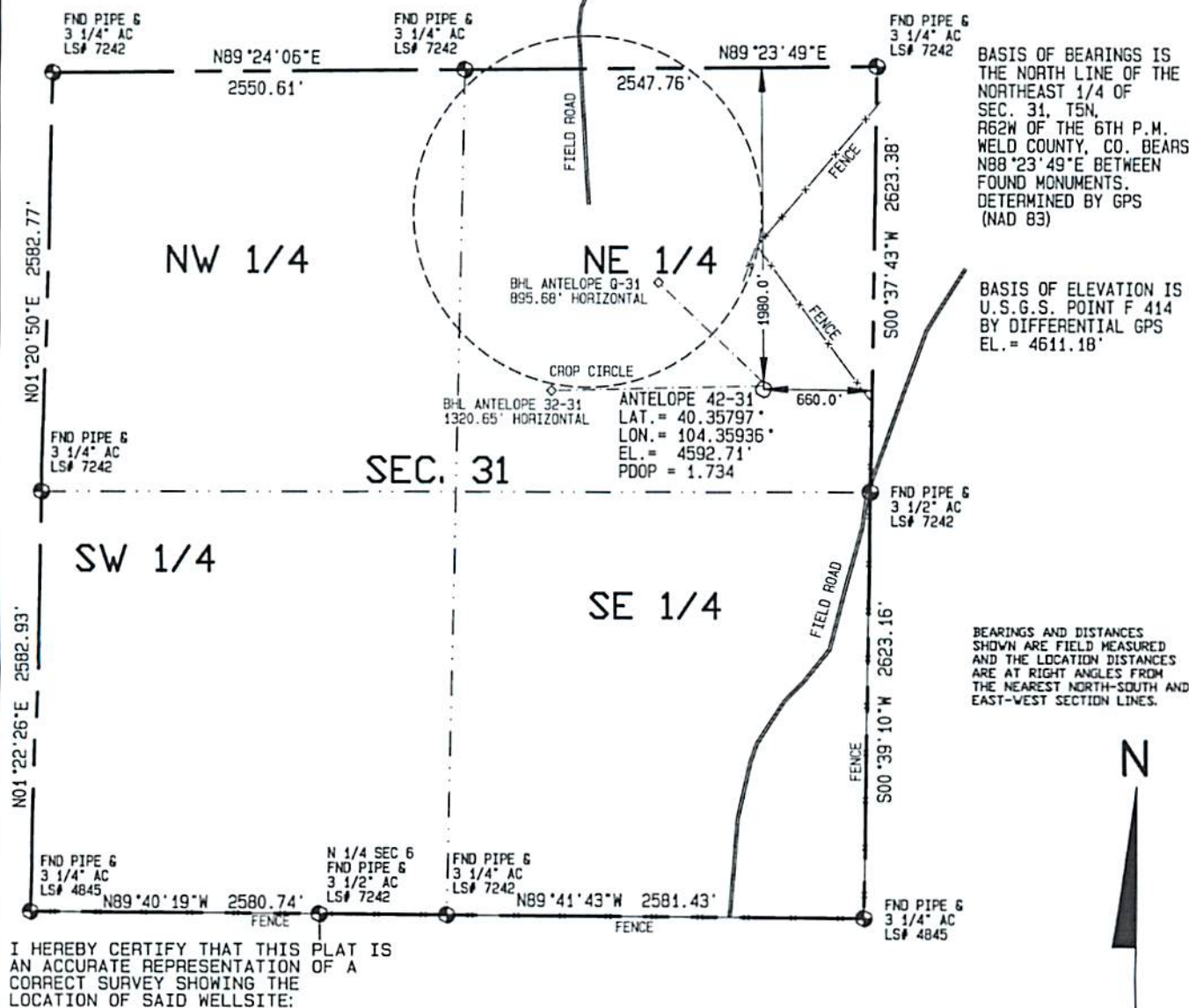
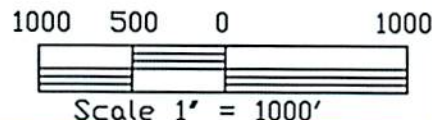


SURFACE HOLE LOCATIONS						BOTTOM HOLE LOCATIONS					
WELL	LAT.	LONG.	EL.	FNL	FEL	WELL	LAT.	LONG.	N/S	E/W	FEL
42-31	40.35797°	104.35936°	4592.71'	1980.0'	660.0'	42-31	40.35797°	104.35936°	1980.0' FNL	660.0' FEL	
32-31	40.35803°	104.35936°	4592.94'	1960.0'	660.2'	32-31	40.35805°	104.36410°	1980.0' FNL	1980.0' FEL	
Q-31	40.35808°	104.35936°	4593.17'	1940.0'	660.4'	Q-31	40.35979°	104.36167°	1320.0' FNL	1320.0' FEL	

Visible improvements within 400 feet of the location include:  
NONE



I HEREBY CERTIFY THAT THIS PLAT IS AN ACCURATE REPRESENTATION OF A CORRECT SURVEY SHOWING THE LOCATION OF SAID WELLSITE:



Dan Griggs PLS# 38018

CONTRACT SURVEYORS, LTD.  
COMPLETE SURVEYING AND GLOBAL POSITIONING

2133 SOUTH BELLAIRE STREET #14  
DENVER COLORADO 80222  
(303) 756-3695



DATE OF FIELD WORK:

SEPTEMBER 8, 2010

DATE OF DRAWING:

NOVEMBER 22, 2010

ANTELOPE 42-31 PAD SITE 32-31 R2C 1/5/11

SE 1/4 NE 1/4 SEC. 31, T5N, R62W

BONANZA CREEK ENERGY OPERATING COMPANY, LLC

CSL# 10104-50 REVISED

WELD COUNTY, COLORADO