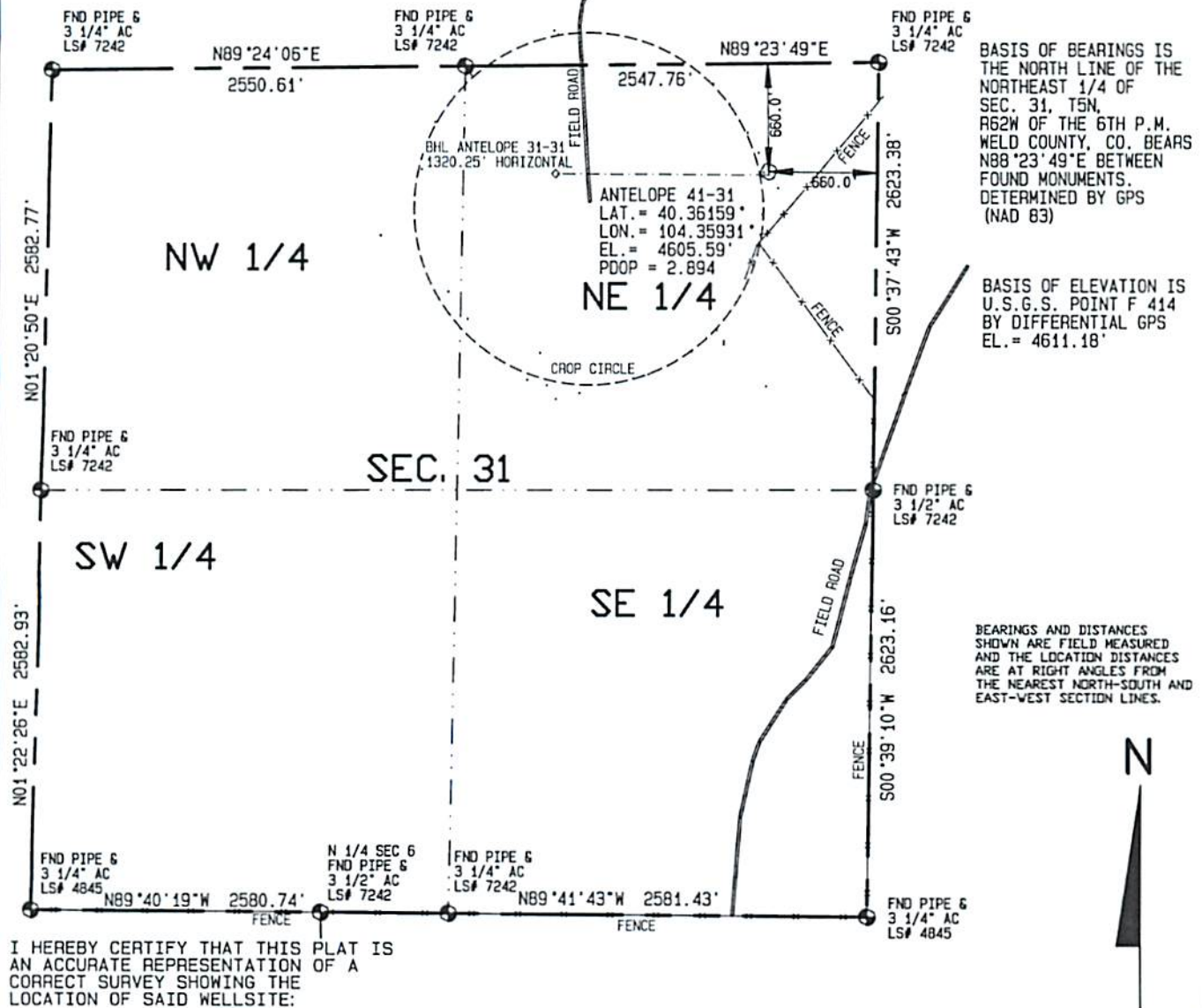


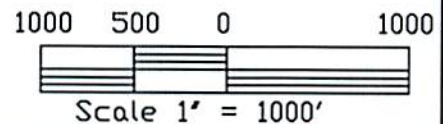
| WELL  | SURFACE HOLE LOCATIONS        | FNL    | FEL    |
|-------|-------------------------------|--------|--------|
|       | LAT. LONG. EL.                |        |        |
| 41-31 | 40.36159° 104.35931° 4605.59' | 660.0' | 660.0' |
| 31-31 | 40.36154° 104.35931° 4606.07' | 680.0' | 659.8' |

| WELL  | BOTTOM HOLE LOCATIONS | N/S        | E/W         |
|-------|-----------------------|------------|-------------|
|       | LAT. LONG.            |            |             |
| 41-31 | 40.36159° 104.35931°  | 660.0' FNL | 660.0' FEL  |
| 31-31 | 40.36160° 104.36405°  | 660.0' FNL | 1980.0' FEL |

Visible improvements within 400 feet of the location include:  
 A crop circle is 56' to the west.  
 A fence line is 237' to the southeast



I HEREBY CERTIFY THAT THIS PLAT IS AN ACCURATE REPRESENTATION OF A CORRECT SURVEY SHOWING THE LOCATION OF SAID WELLSITE:



Dan Griggs PLS# 38018

**CONTRACT SURVEYORS, LTD.**  
 COMPLETE SURVEYING AND GLOBAL POSITIONING

2133 SOUTH BELLAIRE STREET #14  
 DENVER COLORADO 80222  
 (303) 756-3695



|   |                    |
|---|--------------------|
| DATE OF FIELD WORK:                         | DATE OF DRAWING:   |
| SEPTEMBER 8, 2010                           | SEPTEMBER 15, 2010 |
| ANTELOPE 41-31 PAD SITE 31-31 8/22/11       |                    |
| NE 1/4 NE 1/4 SEC. 31, T5N, R62W            |                    |
| BONANZA CREEK ENERGY OPERATING COMPANY, LLC |                    |
| WELD COUNTY, COLORADO                       |                    |

CSL# 10104-49 REV.