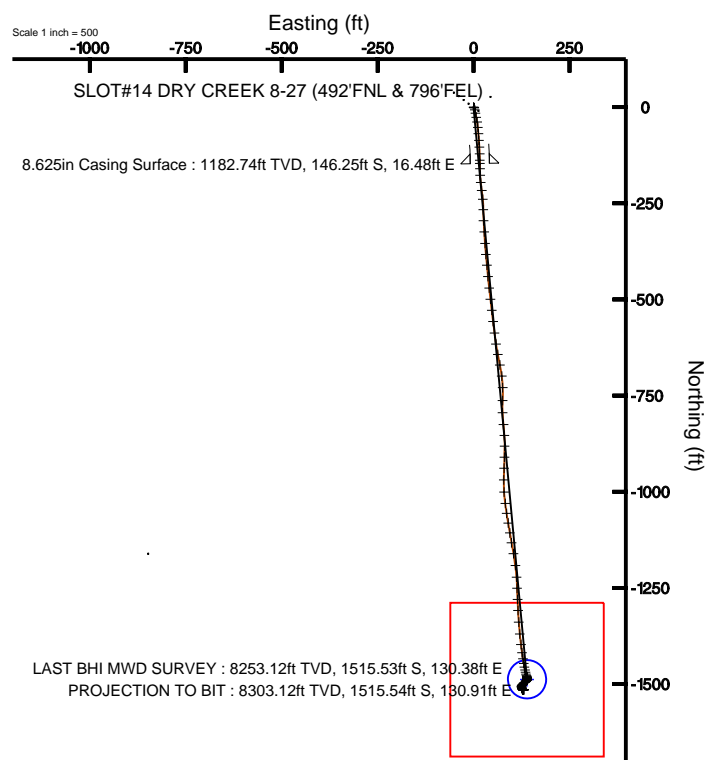
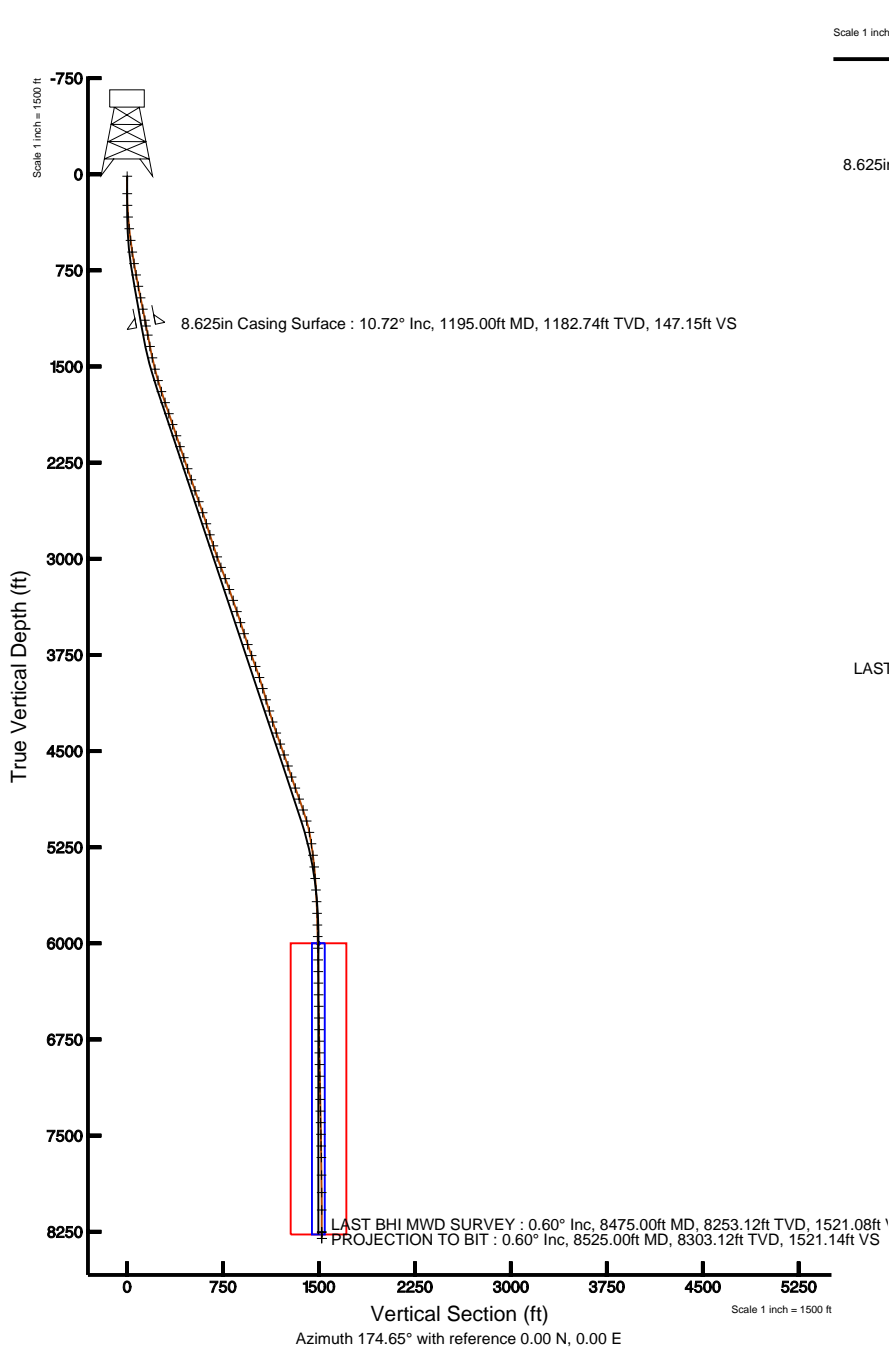


KERR MCGEE OIL & GAS ONSHORE LP

Location: COLORADO Slot: SLOT#14 DRY CREEK 8-27 (492°FNL & 796°FEL)
 Field: WELD COUNTY (KERR MCGEE) Well: DRY CREEK 8-27
 Facility: SEC.27-T1N-R67W Wellbore: DRY CREEK 8-27 PWB



Plot reference wellpath is DRY CREEK 8-27 (REV-B.0) PWB	
True vertical depths are referenced to XTREME 12 (RKB)	Grid System: NAD83 / Lambert Colorado State Planes, Northern Zone (501), US feet
Measured depths are referenced to XTREME 12 (RKB)	North Reference: True north
XTREME 12 (RKB) to Mean Sea Level: 5008 feet	Scale: True distance
Mean Sea Level to Mud line (Facility: SEC.27-T1N-R67W): 0 feet	Depths are in feet
Coordinates are in feet referenced to Slot	Created by: cookdawn on 12/29/2010



BGGM (1945.0 to 2012.0) Dip: 66.76° Field: 53002 nT
 Magnetic North is 8.94 degrees East of True North (at 11/18/2010)

To correct azimuth from Magnetic to True add 8.94 degrees
 For example: If the Magnetic North Azimuth = 90 degs, then the Grid North Azimuth = 90 + 8.94 = 98.94



Actual Wellpath Report

DRY CREEK 8-27 AWP

Page 1 of 5



INTEQ

REFERENCE WELLPATH IDENTIFICATION

Operator	KERR MCGEE OIL & GAS ONSHORE LP	Slot	SLOT#14 DRY CREEK 8-27 (492'FNL & 796'FEL)
Area	COLORADO	Well	DRY CREEK 8-27
Field	WELD COUNTY (KERR MCGEE)	Wellbore	DRY CREEK 8-27 AWP
Facility	SEC.27-T1N-R67W		

REPORT SETUP INFORMATION

Projection System	NAD83 / Lambert Colorado State Planes, Northern Zone (501), US feet	Software System	WellArchitect® 2.0
North Reference	True	User	Cookdanm
Scale	0.999964	Report Generated	12/29/2010 at 10:59:38 AM
Convergence at slot	0.41° East	Database/Source file	Denver Server/DRY_CREEK_8-27_AWP.xml

WELLPATH LOCATION

	Local coordinates		Grid coordinates		Geographic coordinates	
	North[ft]	East[ft]	Easting[USft]	Northing[USft]	Latitude	Longitude
Slot Location	683.26	3299.54	3176392.56	1253674.83	40°01'40.818"N	104°52'12.389"W
Facility Reference Pt			3173097.99	1252968.61	40°01'34.068"N	104°52'54.804"W
Field Reference Pt			3197771.84	1268891.29	40°04'09.600"N	104°47'36.000"W

WELLPATH DATUM

Calculation method	Minimum curvature	XTREME 12 (RKB) to Facility Vertical Datum	5008.00ft
Horizontal Reference Pt	Slot	XTREME 12 (RKB) to Mean Sea Level	5008.00ft
Vertical Reference Pt	XTREME 12 (RKB)	Facility Vertical Datum to Mud Line (Facility)	0.00ft
MD Reference Pt	XTREME 12 (RKB)	Section Origin	N 0.00, E 0.00 ft
Field Vertical Reference	Mean Sea Level	Section Azimuth	174.65°



Actual Wellpath Report

DRY CREEK 8-27 AWP

Page 2 of 5



INTEQ

REFERENCE WELLPATH IDENTIFICATION

Operator	KERR MCGEE OIL & GAS ONSHORE LP	Slot	SLOT#14 DRY CREEK 8-27 (492'FNL & 796'FEL)
Area	COLORADO	Well	DRY CREEK 8-27
Field	WELD COUNTY (KERR MCGEE)	Wellbore	DRY CREEK 8-27 AWP
Facility	SEC.27-T1N-R67W		

WELLPATH DATA (93 stations) † = interpolated/extrapolated station

MD [ft]	Inclination [°]	Azimuth [°]	TVD [ft]	Vert Sect [ft]	North [ft]	East [ft]	DLS [°/100ft]	Comments
0.00†	0.000	89.800	0.00	0.00	0.00	0.00	0.00	
15.00	0.000	89.800	15.00	0.00	0.00	0.00	0.00	
150.00	0.700	89.800	150.00	0.07	0.00	0.82	0.52	
242.00	2.000	159.400	241.97	1.67	-1.50	1.95	2.04	
333.00	4.700	167.900	332.81	6.91	-6.63	3.29	3.01	
425.00	6.300	169.300	424.38	15.68	-15.28	5.02	1.75	
517.00	7.400	167.900	515.73	26.59	-26.03	7.20	1.21	
608.00	8.200	171.000	605.88	38.88	-38.17	9.44	0.99	
699.00	9.800	174.500	695.76	53.11	-52.29	11.20	1.86	
789.00	11.100	174.500	784.27	69.43	-68.54	12.76	1.44	
880.00	11.200	176.600	873.55	87.02	-86.08	14.13	0.46	
971.00	11.100	176.300	962.83	104.61	-103.64	15.22	0.13	
1062.00	11.100	178.400	1052.13	122.11	-121.14	16.03	0.44	
1150.00	10.800	179.400	1138.53	138.78	-137.85	16.35	0.40	
1268.00	10.600	178.000	1254.48	160.63	-159.75	16.84	0.28	
1358.00	11.300	178.400	1342.84	177.69	-176.84	17.38	0.78	
1449.00	12.800	173.800	1431.83	196.67	-195.78	18.72	1.96	
1540.00	13.500	171.000	1520.44	217.35	-216.29	21.47	1.04	
1631.00	16.100	175.200	1608.42	240.57	-239.36	24.19	3.09	
1722.00	18.700	179.500	1695.25	267.73	-266.53	25.37	3.19	
1812.00	18.500	177.300	1780.55	296.37	-295.22	26.17	0.81	
1903.00	18.900	175.200	1866.75	325.53	-324.32	28.08	0.86	
1994.00	19.300	177.000	1952.74	355.29	-354.03	30.10	0.78	
2085.00	17.800	174.900	2039.01	384.23	-382.90	32.13	1.80	
2175.00	18.500	173.800	2124.53	412.26	-410.80	34.89	0.87	
2266.00	19.700	175.200	2210.52	442.04	-440.44	37.73	1.41	
2357.00	18.900	172.800	2296.41	472.11	-470.35	40.86	1.24	
2448.00	18.700	174.500	2382.55	501.43	-499.49	44.11	0.64	
2539.00	18.200	172.100	2468.88	530.21	-528.09	47.46	1.00	
2629.00	19.900	173.800	2553.95	559.57	-557.24	51.05	1.99	
2720.00	19.000	172.400	2639.75	589.86	-587.32	54.68	1.11	
2811.00	18.100	171.700	2726.02	618.78	-615.99	58.68	1.02	
2902.00	17.300	168.900	2812.72	646.36	-643.26	63.32	1.28	
2992.00	18.500	168.900	2898.36	673.88	-670.40	68.65	1.33	
3083.00	19.300	171.400	2984.45	703.26	-699.44	73.68	1.25	
3171.00	20.700	179.100	3067.16	733.29	-729.37	76.10	3.39	
3265.00	21.100	181.900	3154.98	766.64	-762.90	75.80	1.14	
3355.00	20.400	178.400	3239.14	798.37	-794.77	75.70	1.58	
3446.00	18.900	172.100	3324.85	828.92	-825.23	78.17	2.85	
3537.00	17.700	178.400	3411.25	857.45	-853.66	80.58	2.54	
3628.00	18.100	179.800	3497.85	885.33	-881.62	81.02	0.65	
3719.00	18.500	181.600	3584.25	913.74	-910.19	80.66	0.76	
3809.00	18.700	181.900	3669.55	942.23	-938.88	79.78	0.25	
3900.00	20.400	181.200	3755.30	972.46	-969.32	78.97	1.89	
3991.00	20.600	176.300	3840.54	1004.22	-1001.16	79.67	1.90	



Actual Wellpath Report

DRY CREEK 8-27 AWP

Page 3 of 5



INTEQ

REFERENCE WELLPATH IDENTIFICATION

Operator	KERR MCGEE OIL & GAS ONSHORE LP	Slot	SLOT#14 DRY CREEK 8-27 (492'FNL & 796'FEL)
Area	COLORADO	Well	DRY CREEK 8-27
Field	WELD COUNTY (KERR MCGEE)	Wellbore	DRY CREEK 8-27 AWP
Facility	SEC.27-T1N-R67W		

WELLPATH DATA (93 stations)

MD [ft]	Inclination [°]	Azimuth [°]	TVD [ft]	Vert Sect [ft]	North [ft]	East [ft]	DLS [°/100ft]	Comments
4082.00	17.600	170.700	3926.53	1033.96	-1030.72	82.93	3.86	
4172.00	15.800	173.500	4012.73	1059.79	-1056.32	86.51	2.19	
4263.00	16.900	168.900	4100.05	1085.33	-1081.61	90.46	1.87	
4354.00	16.500	172.100	4187.22	1111.40	-1107.39	94.79	1.10	
4444.00	17.000	168.900	4273.40	1137.26	-1132.96	99.08	1.17	
4535.00	20.000	170.700	4359.69	1166.03	-1161.38	104.15	3.36	
4626.00	20.000	170.700	4445.20	1197.08	-1192.10	109.18	0.00	
4717.00	19.200	178.000	4530.94	1227.55	-1222.41	112.22	2.83	
4807.00	18.400	177.300	4616.14	1256.51	-1251.39	113.41	0.92	
4898.00	18.700	177.000	4702.41	1285.44	-1280.31	114.85	0.35	
4989.00	18.200	177.700	4788.73	1314.20	-1309.07	116.18	0.60	
5080.00	20.700	175.900	4874.53	1344.48	-1339.32	117.90	2.82	
5171.00	19.400	173.800	4960.02	1375.67	-1370.39	120.68	1.63	
5261.00	16.000	173.500	5045.74	1403.03	-1397.58	123.70	3.78	
5352.00	11.400	171.700	5134.13	1424.56	-1418.95	126.42	5.08	
5443.00	8.700	171.000	5223.73	1440.41	-1434.65	128.80	2.97	
5534.00	6.800	169.300	5313.89	1452.64	-1446.74	130.87	2.10	
5625.00	5.400	168.900	5404.37	1462.27	-1456.24	132.70	1.54	
5715.00	4.400	168.200	5494.04	1469.91	-1463.78	134.22	1.11	
5806.00	3.600	166.100	5584.82	1476.21	-1469.97	135.62	0.89	
5897.00	2.700	162.900	5675.68	1481.13	-1474.79	136.94	1.01	
5988.00	2.000	161.500	5766.61	1484.78	-1478.34	138.07	0.77	
6079.00	1.600	160.800	5857.56	1487.56	-1481.05	138.99	0.44	
6169.00	1.200	176.700	5947.53	1489.72	-1483.18	139.46	0.62	
6260.00	1.000	172.800	6038.52	1491.46	-1484.91	139.61	0.23	
6351.00	0.900	181.900	6129.51	1492.97	-1486.42	139.69	0.20	
6442.00	0.800	193.800	6220.50	1494.28	-1487.75	139.51	0.22	
6532.00	0.800	191.400	6310.49	1495.47	-1488.97	139.24	0.04	
6623.00	0.700	184.000	6401.48	1496.63	-1490.15	139.08	0.15	
6714.00	1.100	217.400	6492.47	1497.82	-1491.40	138.51	0.71	
6805.00	1.200	222.700	6583.45	1499.10	-1492.79	137.33	0.16	
6896.00	1.300	229.400	6674.43	1500.33	-1494.17	135.90	0.19	
6986.00	1.400	233.200	6764.40	1501.49	-1495.49	134.24	0.15	
7077.00	1.600	229.700	6855.37	1502.80	-1496.98	132.39	0.24	
7168.00	1.600	226.600	6946.34	1504.31	-1498.67	130.49	0.10	
7259.00	1.500	222.300	7037.30	1505.89	-1500.42	128.77	0.17	
7349.00	0.800	211.800	7127.28	1507.19	-1501.83	127.64	0.81	
7440.00	1.500	220.200	7218.27	1508.53	-1503.28	126.54	0.79	
7531.00	1.700	205.100	7309.23	1510.53	-1505.41	125.20	0.51	
7622.00	1.300	159.400	7400.20	1512.69	-1507.60	124.99	1.34	
7713.00	1.100	166.400	7491.18	1514.55	-1509.42	125.56	0.27	
7804.00	1.300	172.800	7582.16	1516.44	-1511.29	125.89	0.26	
7894.00	1.000	149.900	7672.14	1518.18	-1512.98	126.42	0.60	
8031.00	0.600	142.500	7809.13	1519.87	-1514.58	127.45	0.30	
8167.00	0.500	114.800	7945.13	1520.77	-1515.40	128.42	0.21	



Actual Wellpath Report

DRY CREEK 8-27 AWP

Page 4 of 5



INTEQ

REFERENCE WELLPATH IDENTIFICATION

Operator	KERR MCGEE OIL & GAS ONSHORE LP	Slot	SLOT#14 DRY CREEK 8-27 (492'FNL & 796'FEL)
Area	COLORADO	Well	DRY CREEK 8-27
Field	WELD COUNTY (KERR MCGEE)	Wellbore	DRY CREEK 8-27 AWP
Facility	SEC.27-T1N-R67W		

WELLPATH DATA (93 stations)

MD [ft]	Inclination [°]	Azimuth [°]	TVD [ft]	Vert Sect [ft]	North [ft]	East [ft]	DLS [°/100ft]	Comments
8303.00	0.200	75.000	8081.12	1521.03	-1515.59	129.19	0.27	
8475.00	0.600	91.200	8253.12	1521.08	-1515.53	130.38	0.24	LAST BHI MWD SURVEY
8525.00	0.600	91.200	8303.12	1521.14	-1515.54	130.91	0.00	PROJECTION TO BIT

HOLE & CASING SECTIONS Ref Wellbore: DRY CREEK 8-27 AWP Ref Wellpath: DRY CREEK 8-27 AWP

String/Diameter	Start MD [ft]	End MD [ft]	Interval [ft]	Start TVD [ft]	End TVD [ft]	Start N/S [ft]	Start E/W [ft]	End N/S [ft]	End E/W [ft]
12.25in Open Hole	15.00	1205.00	1190.00	15.00	1192.56	0.00	0.00	-148.11	16.52
8.625in Casing Surface	15.00	1195.00	1180.00	15.00	1182.74	0.00	0.00	-146.25	16.48
7.875in Open Hole	1195.00	8525.00	7330.00	1182.74	8303.12	-146.25	16.48	-1515.54	130.91

TARGETS

Name	MD [ft]	TVD [ft]	North [ft]	East [ft]	Grid East [srv ft]	Grid North [srv ft]	Latitude	Longitude	Shape
DRY CREEK 8-27 GEO TARGET 50' RADIUS (1980'FNL & 660'FEL, REV-1)		6000.00	-1488.12	139.47	3176542.59	1252187.79	40°01'26.112"N	104°52'10.596"W	circle
DRY CREEK 8-27 LEGAL BOX (199'N,201'S,200'E,200'W OF GEO TARGET)		6000.00	-1489.12	139.47	3176542.60	1252186.79	40°01'26.102"N	104°52'10.596"W	square

WELLPATH COMPOSITION Ref Wellbore: DRY CREEK 8-27 AWP Ref Wellpath: DRY CREEK 8-27 AWP

Start MD [ft]	End MD [ft]	Positional Uncertainty Model	Log Name/Comment	Wellbore
15.00	1150.00	NaviTrak (Standard)	BHI MWD SURVEYS 12.25 HOLE <150-1150>	DRY CREEK 8-27 AWP
1150.00	8475.00	NaviTrak (Standard)	BHI MWD SURVEYS 7.875 HOLE <1268-8475>	DRY CREEK 8-27 AWP
8475.00	8525.00	Blind Drilling (std)	Projection to bit	DRY CREEK 8-27 AWP



Actual Wellpath Report

DRY CREEK 8-27 AWP

Page 5 of 5



INTEQ

REFERENCE WELLPATH IDENTIFICATION

Operator	KERR MCGEE OIL & GAS ONSHORE LP	Slot	SLOT#14 DRY CREEK 8-27 (492'FNL & 796'FEL)
Area	COLORADO	Well	DRY CREEK 8-27
Field	WELD COUNTY (KERR MCGEE)	Wellbore	DRY CREEK 8-27 AWB
Facility	SEC.27-T1N-R67W		

WELLPATH COMMENTS

MD [ft]	Inclination [°]	Azimuth [°]	TVD [ft]	Comment
8475.00	0.600	91.200	8253.12	LAST BHI MWD SURVEY
8525.00	0.600	91.200	8303.12	PROJECTION TO BIT