

Encana OIL & GAS (USA) INC.

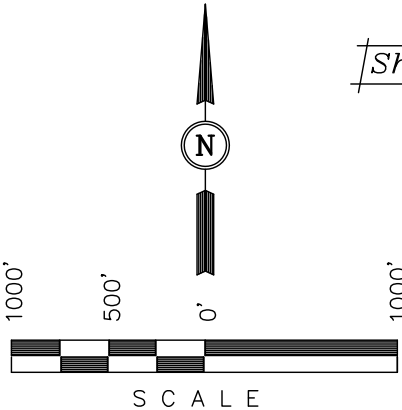
Well location, FF DH04A-17 L16 498, located as shown in the SE 1/4 NW 1/4 of Section 16, T4S, R98W, 6th P.M., Rio Blanco County, Colorado.

BASIS OF ELEVATION

BENCH MARK (H79) LOCATED IN THE NE 1/4 OF SECTION 35, T4S, R98W, 6th P.M. TAKEN FROM THE BULL FORK QUADRANGLE, COLORADO, 7.5 MINUTE SERIES (TOPO GRAPHICAL MAP) PUBLISHED BY THE UNITED STATES DEPARTMENT OF THE INTERIOR, GEOLOGICAL SURVEY. SAID ELEVATION IS MARKED AS BEING 8535 FEET.

BASIS OF BEARINGS

BASIS OF BEARINGS IS A G.P.S. OBSERVATION.



Sheet 1a of 11

NOTE:  
SEE ADDENDUM PLAT FOR EXISTING IMPROVEMENT WITHIN 400' OF THE PROPOSED WELL DISTURBANCE..

CERTIFICATE

THIS IS TO CERTIFY THAT THE ABOVE PLAT WAS PREPARED FROM FIELD NOTES OF ACTUAL SURVEYS MADE BY ME OR UNDER MY SUPERVISION AND THAT THE SAME ARE TRUE AND CORRECT TO THE BEST OF MY KNOWLEDGE AND BELIEF.

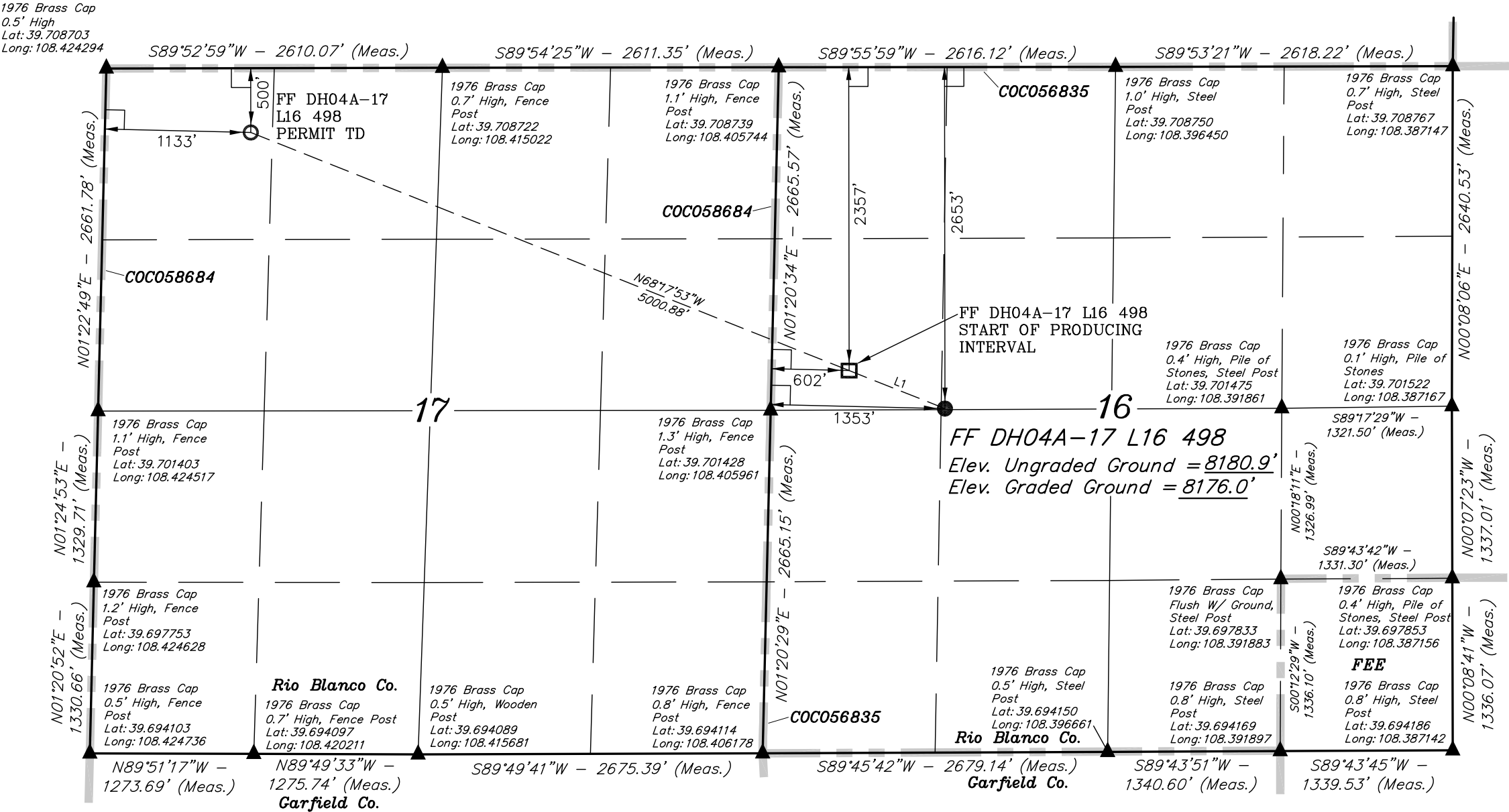
REGISTERED LAND SURVEYOR  
REGISTRATION NO. 17492  
STATE OF COLORADO

Revised: 10-13-10 D.R.B.  
Revised: 09-21-10 D.R.B.  
Revised: 02-10-09 D.R.B.  
Revised: 01-24-09 D.R.B.

UINTAH ENGINEERING & LAND SURVEYING  
85 SOUTH 200 EAST - VERNAL, UTAH 84078  
(435) 789-1017

SCALE 1" = 1000'	DATE SURVEYED: 06-23-08	DATE DRAWN: 07-22-08
PARTY B.B. G.O. D.R.B.	REFERENCES G.L.O. PLAT	
WEATHER WARM	FILE Encana OIL & GAS (USA) INC.	

T4S, R98W, 6th P.M.



LINE TABLE		
LINE	BEARING	LENGTH
L1	N68°21'42"W	800.54'

LEGEND:

- └─┘ = 90° SYMBOL
- = PROPOSED WELL HEAD.
- ▲ = SECTION CORNERS LOCATED.

NAD 83 (PERMIT TD) LATITUDE = 39°42'26.43" (39.707342) LONGITUDE = 108°25'13.11" (108.420308)	NAD 83 (START OF PRODUCING INTERVAL) LATITUDE = 39°42'08.19" (39.702275) LONGITUDE = 108°24'13.67" (108.403797)	NAD 83 (SURFACE LOCATION) LATITUDE = 39°42'05.28" (39.701467) LONGITUDE = 108°24'04.15" (108.401153)
NAD 27 (PERMIT TD) LATITUDE = 39°42'26.52" (39.707367) LONGITUDE = 108°25'10.78" (108.419661)	NAD 27 (TARGET BOTTOM HOLE) LATITUDE = 39°42'08.28" (39.702300) LONGITUDE = 108°24'11.34" (108.403150)	NAD 27 (SURFACE LOCATION) LATITUDE = 39°42'05.37" (39.701492) LONGITUDE = 108°24'01.83" (108.400508)

PDOP = 1.7