

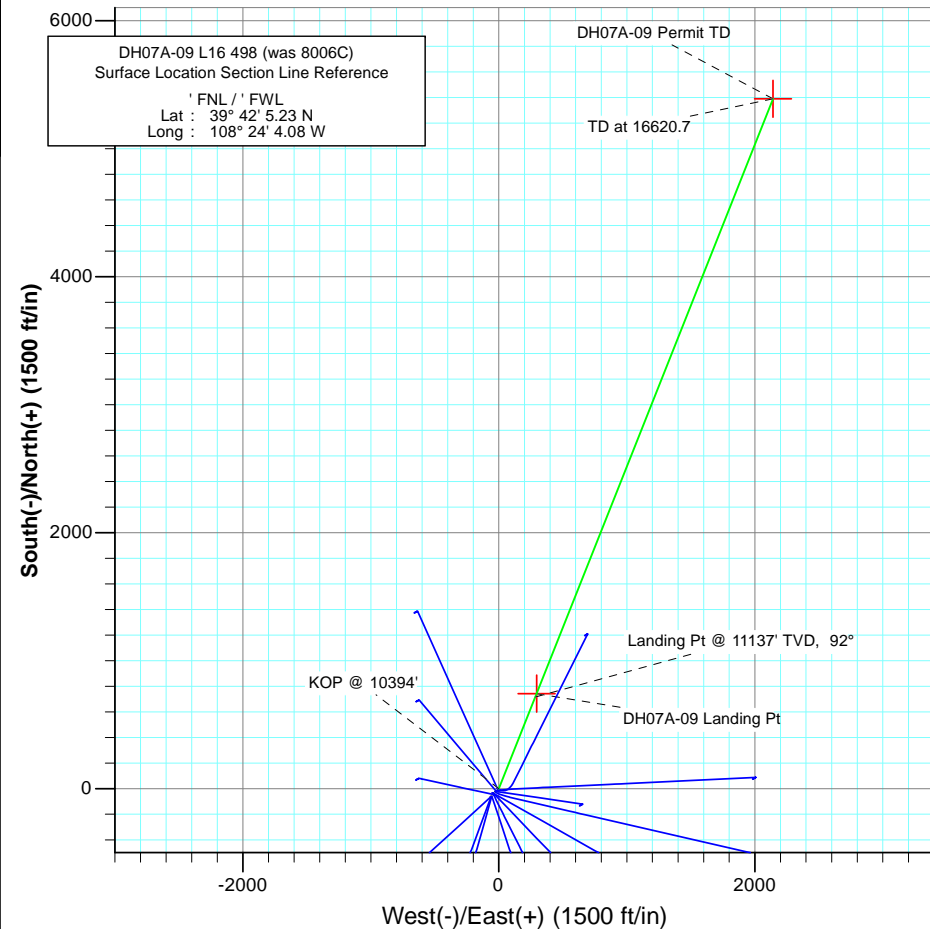
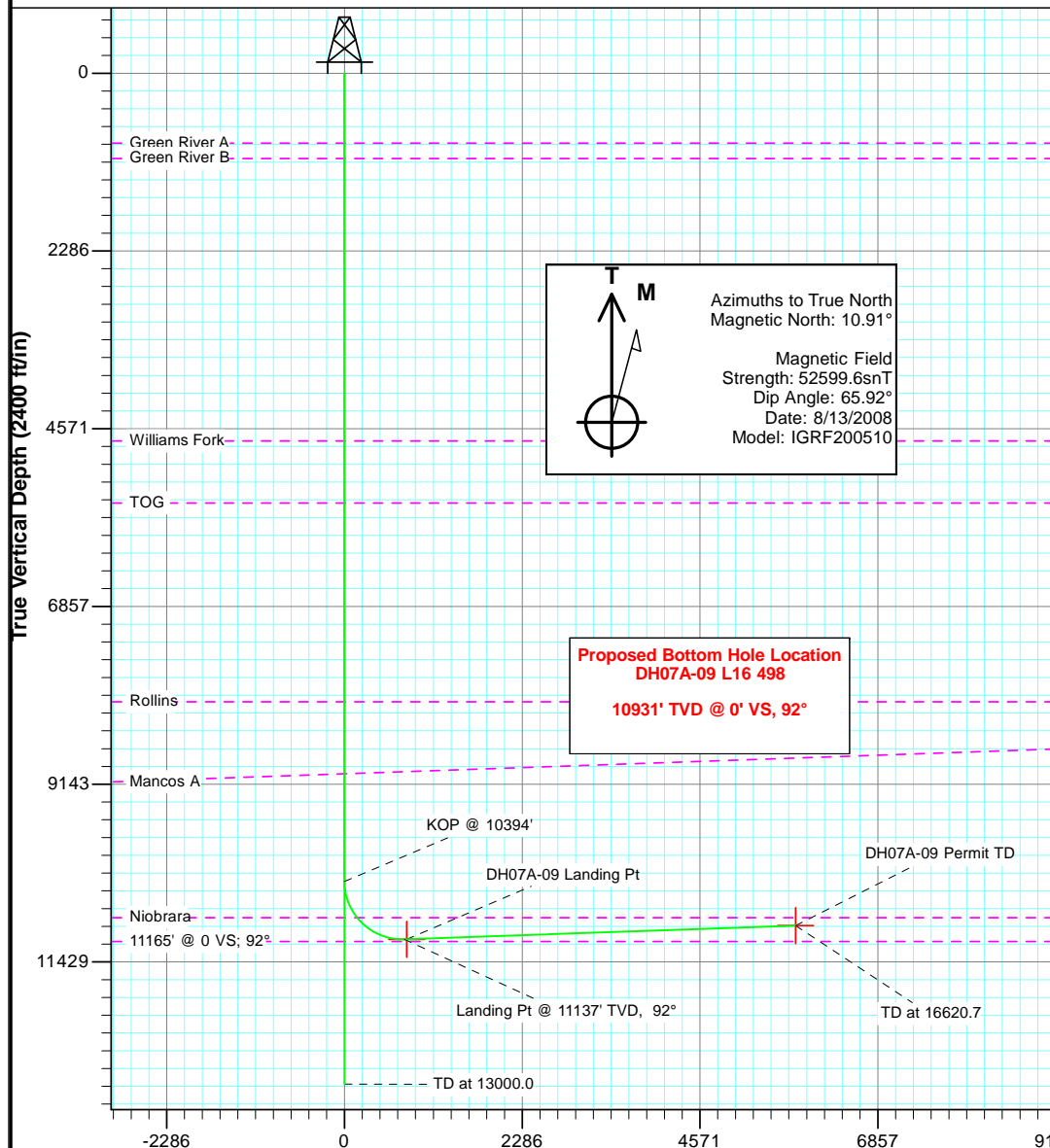


Project: Figure Four Unit
Site: L16 498
Well: DH07A-09 L16 498 (was 8006C)
Wellbore: DD
Plan: Plan #3



SECTION DETAILS

Sec	MD	Inc	Azi	TVD	+N/-S	+E/-W	Dleg	TFace	VSect	Target
1	0.0	0.00	0.00	0.0	0.0	0.0	0.00	0.00	0.0	
2	10394.0	0.00	0.00	10394.0	0.0	0.0	0.00	0.00	0.0	
3	11588.8	92.00	21.67	11137.6	715.7	284.3	7.70	21.67	770.1	
4	16620.7	92.00	21.67	10962.0	5389.2	2141.1	0.00	0.00	5799.0	DH07A-09 Permit TD



Plan #3 DH07A-09 L16 498 (was 8006C) 85xxx; LR						
Well @ 8209.0ft North American Datum 1983 Well DH07A-09 L16 498 (was 8006C), True North						
Type	Target	Azimuth	Origin Type	N/S	E/W	From TVD
Target	DH07A-09 Landing Pt	21.69	Slot	0.0	0.0	0.0
Name	TVD	+N/-S	+E/-W	Latitude	Longitude	
DH07A-09 Permit TD	10962.0	5389.2	2141.1	39° 42' 58.49 N	108° 23' 36.68 W	
DH07A-09 Landing Pt	11137.0	742.7	295.4	39° 42' 12.57 N	108° 24' 0.30 W	

Vertical Section at 21.69° (2400 ft/in)

Cathedral Energy Services

Planning Report

Database:	EDM 5000.1 US Multi Users DB	Local Co-ordinate Reference:	Well DH07A-09 L16 498 (was 8006C)
Company:	EnCana Oil & Gas (USA) Inc	TVD Reference:	Well @ 8209.0ft
Project:	Figure Four Unit	MD Reference:	Well @ 8209.0ft
Site:	L16 498	North Reference:	True
Well:	DH07A-09 L16 498 (was 8006C)	Survey Calculation Method:	Minimum Curvature
Wellbore:	DD		
Design:	Plan #3		

Project	Figure Four Unit		
Map System:	US State Plane 1983	System Datum:	Mean Sea Level
Geo Datum:	North American Datum 1983		
Map Zone:	Colorado Central Zone		

Site		L16 498			
Site Position:		Northing:	1,693,419.82 ft	Latitude:	39° 42' 5.23 N
From:	Lat/Long	Easting:	2,183,832.56 ft	Longitude:	108° 24' 4.07 W
Position Uncertainty:	0.0 ft	Slot Radius:	13.200 in	Grid Convergence:	-1.83 °

Well	DH07A-09 L16 498 (was 8006C)					
Well Position	+N/-S	0.0 ft	Northing:	1,693,419.83 ft	Latitude:	39° 42' 5.23 N
	+E/-W	0.0 ft	Easting:	2,183,831.78 ft	Longitude:	108° 24' 4.08 W
Position Uncertainty		0.0 ft	Wellhead Elevation:	ft	Ground Level:	8,176.0 ft

Wellbore	DD				
Magnetics	Model Name	Sample Date	Declination (°)	Dip Angle (°)	Field Strength (nT)
	IGRF200510	8/13/2008	10.91	65.92	52,600

Design	Plan #3				
Audit Notes:					
Version:	Phase:	PLAN	Tie On Depth:	0.0	
Vertical Section:	Depth From (TVD) (ft)	+N/-S (ft)	+E/-W (ft)	Direction (°)	
	0.0	0.0	0.0	21.69	

Plan Sections										
Measured Depth (ft)	Inclination (°)	Azimuth (°)	Vertical Depth (ft)	+N/-S (ft)	+E/-W (ft)	Dogleg Rate (°/100ft)	Build Rate (°/100ft)	Turn Rate (°/100ft)	TFO (°)	Target
0.0	0.00	0.00	0.0	0.0	0.0	0.00	0.00	0.00	0.00	
10,394.0	0.00	0.00	10,394.0	0.0	0.0	0.00	0.00	0.00	0.00	
11,588.8	92.00	21.67	11,137.6	715.7	284.3	7.70	7.70	0.00	21.67	
16,620.7	92.00	21.67	10,962.0	5,389.2	2,141.1	0.00	0.00	0.00	0.00	DH07A-09 Permit TD

Cathedral Energy Services

Planning Report

Database:	EDM 5000.1 US Multi Users DB	Local Co-ordinate Reference:	Well DH07A-09 L16 498 (was 8006C)
Company:	EnCana Oil & Gas (USA) Inc	TVD Reference:	Well @ 8209.0ft
Project:	Figure Four Unit	MD Reference:	Well @ 8209.0ft
Site:	L16 498	North Reference:	True
Well:	DH07A-09 L16 498 (was 8006C)	Survey Calculation Method:	Minimum Curvature
Wellbore:	DD		
Design:	Plan #3		

Planned Survey

Measured Depth (ft)	Inclination (°)	Azimuth (°)	Vertical Depth (ft)	+N/-S (ft)	+E/-W (ft)	Vertical Section (ft)	Dogleg Rate (°/100ft)	Build Rate (°/100ft)	Comments / Formations
0.0	0.00	0.00	0.0	0.0	0.0	0.0	0.00	0.00	
100.0	0.00	0.00	100.0	0.0	0.0	0.0	0.00	0.00	
200.0	0.00	0.00	200.0	0.0	0.0	0.0	0.00	0.00	
300.0	0.00	0.00	300.0	0.0	0.0	0.0	0.00	0.00	
400.0	0.00	0.00	400.0	0.0	0.0	0.0	0.00	0.00	
500.0	0.00	0.00	500.0	0.0	0.0	0.0	0.00	0.00	
600.0	0.00	0.00	600.0	0.0	0.0	0.0	0.00	0.00	
700.0	0.00	0.00	700.0	0.0	0.0	0.0	0.00	0.00	
800.0	0.00	0.00	800.0	0.0	0.0	0.0	0.00	0.00	
899.0	0.00	0.00	899.0	0.0	0.0	0.0	0.00	0.00	Green River A
900.0	0.00	0.00	900.0	0.0	0.0	0.0	0.00	0.00	
1,000.0	0.00	0.00	1,000.0	0.0	0.0	0.0	0.00	0.00	
1,099.0	0.00	0.00	1,099.0	0.0	0.0	0.0	0.00	0.00	Green River B
1,100.0	0.00	0.00	1,100.0	0.0	0.0	0.0	0.00	0.00	
1,200.0	0.00	0.00	1,200.0	0.0	0.0	0.0	0.00	0.00	
1,300.0	0.00	0.00	1,300.0	0.0	0.0	0.0	0.00	0.00	
1,400.0	0.00	0.00	1,400.0	0.0	0.0	0.0	0.00	0.00	
1,500.0	0.00	0.00	1,500.0	0.0	0.0	0.0	0.00	0.00	
1,600.0	0.00	0.00	1,600.0	0.0	0.0	0.0	0.00	0.00	
1,700.0	0.00	0.00	1,700.0	0.0	0.0	0.0	0.00	0.00	
1,800.0	0.00	0.00	1,800.0	0.0	0.0	0.0	0.00	0.00	
1,900.0	0.00	0.00	1,900.0	0.0	0.0	0.0	0.00	0.00	
2,000.0	0.00	0.00	2,000.0	0.0	0.0	0.0	0.00	0.00	
2,100.0	0.00	0.00	2,100.0	0.0	0.0	0.0	0.00	0.00	
2,200.0	0.00	0.00	2,200.0	0.0	0.0	0.0	0.00	0.00	
2,300.0	0.00	0.00	2,300.0	0.0	0.0	0.0	0.00	0.00	
2,400.0	0.00	0.00	2,400.0	0.0	0.0	0.0	0.00	0.00	
2,500.0	0.00	0.00	2,500.0	0.0	0.0	0.0	0.00	0.00	
2,600.0	0.00	0.00	2,600.0	0.0	0.0	0.0	0.00	0.00	
2,700.0	0.00	0.00	2,700.0	0.0	0.0	0.0	0.00	0.00	
2,800.0	0.00	0.00	2,800.0	0.0	0.0	0.0	0.00	0.00	
2,900.0	0.00	0.00	2,900.0	0.0	0.0	0.0	0.00	0.00	
3,000.0	0.00	0.00	3,000.0	0.0	0.0	0.0	0.00	0.00	
3,100.0	0.00	0.00	3,100.0	0.0	0.0	0.0	0.00	0.00	
3,200.0	0.00	0.00	3,200.0	0.0	0.0	0.0	0.00	0.00	
3,300.0	0.00	0.00	3,300.0	0.0	0.0	0.0	0.00	0.00	
3,400.0	0.00	0.00	3,400.0	0.0	0.0	0.0	0.00	0.00	
3,500.0	0.00	0.00	3,500.0	0.0	0.0	0.0	0.00	0.00	
3,600.0	0.00	0.00	3,600.0	0.0	0.0	0.0	0.00	0.00	
3,700.0	0.00	0.00	3,700.0	0.0	0.0	0.0	0.00	0.00	
3,800.0	0.00	0.00	3,800.0	0.0	0.0	0.0	0.00	0.00	
3,900.0	0.00	0.00	3,900.0	0.0	0.0	0.0	0.00	0.00	
4,000.0	0.00	0.00	4,000.0	0.0	0.0	0.0	0.00	0.00	
4,100.0	0.00	0.00	4,100.0	0.0	0.0	0.0	0.00	0.00	
4,200.0	0.00	0.00	4,200.0	0.0	0.0	0.0	0.00	0.00	
4,300.0	0.00	0.00	4,300.0	0.0	0.0	0.0	0.00	0.00	
4,400.0	0.00	0.00	4,400.0	0.0	0.0	0.0	0.00	0.00	
4,500.0	0.00	0.00	4,500.0	0.0	0.0	0.0	0.00	0.00	
4,600.0	0.00	0.00	4,600.0	0.0	0.0	0.0	0.00	0.00	
4,700.0	0.00	0.00	4,700.0	0.0	0.0	0.0	0.00	0.00	
4,729.0	0.00	0.00	4,729.0	0.0	0.0	0.0	0.00	0.00	Williams Fork
4,800.0	0.00	0.00	4,800.0	0.0	0.0	0.0	0.00	0.00	

Cathedral Energy Services

Planning Report

Database:	EDM 5000.1 US Multi Users DB	Local Co-ordinate Reference:	Well DH07A-09 L16 498 (was 8006C)
Company:	EnCana Oil & Gas (USA) Inc	TVD Reference:	Well @ 8209.0ft
Project:	Figure Four Unit	MD Reference:	Well @ 8209.0ft
Site:	L16 498	North Reference:	True
Well:	DH07A-09 L16 498 (was 8006C)	Survey Calculation Method:	Minimum Curvature
Wellbore:	DD		
Design:	Plan #3		

Planned Survey

Measured Depth (ft)	Inclination (°)	Azimuth (°)	Vertical Depth (ft)	+N/-S (ft)	+E/-W (ft)	Vertical Section (ft)	Dogleg Rate (°/100ft)	Build Rate (°/100ft)	Comments / Formations
4,900.0	0.00	0.00	4,900.0	0.0	0.0	0.0	0.00	0.00	
5,000.0	0.00	0.00	5,000.0	0.0	0.0	0.0	0.00	0.00	
5,100.0	0.00	0.00	5,100.0	0.0	0.0	0.0	0.00	0.00	
5,200.0	0.00	0.00	5,200.0	0.0	0.0	0.0	0.00	0.00	
5,300.0	0.00	0.00	5,300.0	0.0	0.0	0.0	0.00	0.00	
5,400.0	0.00	0.00	5,400.0	0.0	0.0	0.0	0.00	0.00	
5,500.0	0.00	0.00	5,500.0	0.0	0.0	0.0	0.00	0.00	
5,529.0	0.00	0.00	5,529.0	0.0	0.0	0.0	0.00	0.00	TOG
5,600.0	0.00	0.00	5,600.0	0.0	0.0	0.0	0.00	0.00	
5,700.0	0.00	0.00	5,700.0	0.0	0.0	0.0	0.00	0.00	
5,800.0	0.00	0.00	5,800.0	0.0	0.0	0.0	0.00	0.00	
5,900.0	0.00	0.00	5,900.0	0.0	0.0	0.0	0.00	0.00	
6,000.0	0.00	0.00	6,000.0	0.0	0.0	0.0	0.00	0.00	
6,100.0	0.00	0.00	6,100.0	0.0	0.0	0.0	0.00	0.00	
6,200.0	0.00	0.00	6,200.0	0.0	0.0	0.0	0.00	0.00	
6,300.0	0.00	0.00	6,300.0	0.0	0.0	0.0	0.00	0.00	
6,400.0	0.00	0.00	6,400.0	0.0	0.0	0.0	0.00	0.00	
6,500.0	0.00	0.00	6,500.0	0.0	0.0	0.0	0.00	0.00	
6,600.0	0.00	0.00	6,600.0	0.0	0.0	0.0	0.00	0.00	
6,700.0	0.00	0.00	6,700.0	0.0	0.0	0.0	0.00	0.00	
6,800.0	0.00	0.00	6,800.0	0.0	0.0	0.0	0.00	0.00	
6,900.0	0.00	0.00	6,900.0	0.0	0.0	0.0	0.00	0.00	
7,000.0	0.00	0.00	7,000.0	0.0	0.0	0.0	0.00	0.00	
7,100.0	0.00	0.00	7,100.0	0.0	0.0	0.0	0.00	0.00	
7,200.0	0.00	0.00	7,200.0	0.0	0.0	0.0	0.00	0.00	
7,300.0	0.00	0.00	7,300.0	0.0	0.0	0.0	0.00	0.00	
7,400.0	0.00	0.00	7,400.0	0.0	0.0	0.0	0.00	0.00	
7,500.0	0.00	0.00	7,500.0	0.0	0.0	0.0	0.00	0.00	
7,600.0	0.00	0.00	7,600.0	0.0	0.0	0.0	0.00	0.00	
7,700.0	0.00	0.00	7,700.0	0.0	0.0	0.0	0.00	0.00	
7,800.0	0.00	0.00	7,800.0	0.0	0.0	0.0	0.00	0.00	
7,900.0	0.00	0.00	7,900.0	0.0	0.0	0.0	0.00	0.00	
8,000.0	0.00	0.00	8,000.0	0.0	0.0	0.0	0.00	0.00	
8,084.0	0.00	0.00	8,084.0	0.0	0.0	0.0	0.00	0.00	Rollins
8,100.0	0.00	0.00	8,100.0	0.0	0.0	0.0	0.00	0.00	
8,200.0	0.00	0.00	8,200.0	0.0	0.0	0.0	0.00	0.00	
8,300.0	0.00	0.00	8,300.0	0.0	0.0	0.0	0.00	0.00	
8,400.0	0.00	0.00	8,400.0	0.0	0.0	0.0	0.00	0.00	
8,500.0	0.00	0.00	8,500.0	0.0	0.0	0.0	0.00	0.00	
8,600.0	0.00	0.00	8,600.0	0.0	0.0	0.0	0.00	0.00	
8,700.0	0.00	0.00	8,700.0	0.0	0.0	0.0	0.00	0.00	
8,800.0	0.00	0.00	8,800.0	0.0	0.0	0.0	0.00	0.00	
8,900.0	0.00	0.00	8,900.0	0.0	0.0	0.0	0.00	0.00	
9,000.0	0.00	0.00	9,000.0	0.0	0.0	0.0	0.00	0.00	
9,009.0	0.00	0.00	9,009.0	0.0	0.0	0.0	0.00	0.00	Mancos A
9,100.0	0.00	0.00	9,100.0	0.0	0.0	0.0	0.00	0.00	
9,200.0	0.00	0.00	9,200.0	0.0	0.0	0.0	0.00	0.00	
9,300.0	0.00	0.00	9,300.0	0.0	0.0	0.0	0.00	0.00	
9,400.0	0.00	0.00	9,400.0	0.0	0.0	0.0	0.00	0.00	
9,500.0	0.00	0.00	9,500.0	0.0	0.0	0.0	0.00	0.00	
9,600.0	0.00	0.00	9,600.0	0.0	0.0	0.0	0.00	0.00	
9,700.0	0.00	0.00	9,700.0	0.0	0.0	0.0	0.00	0.00	

Cathedral Energy Services

Planning Report

Database:	EDM 5000.1 US Multi Users DB	Local Co-ordinate Reference:	Well DH07A-09 L16 498 (was 8006C)
Company:	EnCana Oil & Gas (USA) Inc	TVD Reference:	Well @ 8209.0ft
Project:	Figure Four Unit	MD Reference:	Well @ 8209.0ft
Site:	L16 498	North Reference:	True
Well:	DH07A-09 L16 498 (was 8006C)	Survey Calculation Method:	Minimum Curvature
Wellbore:	DD		
Design:	Plan #3		

Planned Survey

Measured Depth (ft)	Inclination (°)	Azimuth (°)	Vertical Depth (ft)	+N/-S (ft)	+E/-W (ft)	Vertical Section (ft)	Dogleg Rate (°/100ft)	Build Rate (°/100ft)	Comments / Formations
9,800.0	0.00	0.00	9,800.0	0.0	0.0	0.0	0.00	0.00	
9,900.0	0.00	0.00	9,900.0	0.0	0.0	0.0	0.00	0.00	
10,000.0	0.00	0.00	10,000.0	0.0	0.0	0.0	0.00	0.00	
10,100.0	0.00	0.00	10,100.0	0.0	0.0	0.0	0.00	0.00	
10,200.0	0.00	0.00	10,200.0	0.0	0.0	0.0	0.00	0.00	
10,300.0	0.00	0.00	10,300.0	0.0	0.0	0.0	0.00	0.00	
10,394.0	0.00	0.00	10,394.0	0.0	0.0	0.0	0.00	0.00	KOP @ 10394'
10,400.0	0.46	21.67	10,400.0	0.0	0.0	0.0	7.70	7.70	
10,500.0	8.16	21.67	10,499.6	7.0	2.8	7.5	7.70	7.70	
10,600.0	15.86	21.67	10,597.4	26.3	10.5	28.3	7.70	7.70	
10,700.0	23.56	21.67	10,691.4	57.7	22.9	62.1	7.70	7.70	
10,800.0	31.26	21.67	10,780.1	100.4	39.9	108.1	7.70	7.70	
10,896.3	38.68	21.67	10,859.0	151.7	60.3	163.2	7.70	7.70	Niobrara
10,900.0	38.96	21.67	10,861.9	153.8	61.1	165.5	7.70	7.70	
11,000.0	46.66	21.67	10,935.2	217.0	86.2	233.4	7.70	7.70	
11,100.0	54.36	21.67	10,998.7	288.6	114.7	310.6	7.70	7.70	
11,200.0	62.06	21.67	11,051.4	367.6	146.0	395.5	7.70	7.70	
11,300.0	69.76	21.67	11,092.1	452.3	179.7	486.7	7.70	7.70	
11,400.0	77.46	21.67	11,120.3	541.4	215.1	582.6	7.70	7.70	
11,500.0	85.16	21.67	11,135.4	633.2	251.6	681.4	7.70	7.70	
11,588.8	92.00	21.67	11,137.6	715.7	284.3	770.1	7.70	7.70	Landing Pt @ 11137' TVD, 92°
11,600.0	92.00	21.67	11,137.2	726.1	288.5	781.3	0.00	0.00	
11,618.0	92.00	21.67	11,136.6	742.8	295.1	799.3	0.00	0.00	DH07A-09 Landing Pt
11,700.0	92.00	21.67	11,133.7	819.0	325.4	881.2	0.00	0.00	
11,800.0	92.00	21.67	11,130.2	911.8	362.3	981.2	0.00	0.00	
11,900.0	92.00	21.67	11,126.8	1,004.7	399.2	1,081.1	0.00	0.00	
12,000.0	92.00	21.67	11,123.3	1,097.6	436.1	1,181.0	0.00	0.00	
12,100.0	92.00	21.67	11,119.8	1,190.5	473.0	1,281.0	0.00	0.00	
12,200.0	92.00	21.67	11,116.3	1,283.3	509.9	1,380.9	0.00	0.00	
12,300.0	92.00	21.67	11,112.8	1,376.2	546.8	1,480.9	0.00	0.00	
12,400.0	92.00	21.67	11,109.3	1,469.1	583.7	1,580.8	0.00	0.00	
12,500.0	92.00	21.67	11,105.8	1,562.0	620.6	1,680.7	0.00	0.00	
12,600.0	92.00	21.67	11,102.3	1,654.9	657.5	1,780.7	0.00	0.00	
12,700.0	92.00	21.67	11,098.8	1,747.7	694.4	1,880.6	0.00	0.00	
12,800.0	92.00	21.67	11,095.3	1,840.6	731.3	1,980.6	0.00	0.00	
12,900.0	92.00	21.67	11,091.9	1,933.5	768.2	2,080.5	0.00	0.00	
13,000.0	92.00	21.67	11,088.4	2,026.4	805.1	2,180.4	0.00	0.00	
13,100.0	92.00	21.67	11,084.9	2,119.2	842.0	2,280.4	0.00	0.00	
13,200.0	92.00	21.67	11,081.4	2,212.1	878.9	2,380.3	0.00	0.00	
13,300.0	92.00	21.67	11,077.9	2,305.0	915.8	2,480.3	0.00	0.00	
13,400.0	92.00	21.67	11,074.4	2,397.9	952.7	2,580.2	0.00	0.00	
13,500.0	92.00	21.67	11,070.9	2,490.8	989.6	2,680.1	0.00	0.00	
13,600.0	92.00	21.67	11,067.4	2,583.6	1,026.5	2,780.1	0.00	0.00	
13,700.0	92.00	21.67	11,063.9	2,676.5	1,063.4	2,880.0	0.00	0.00	
13,800.0	92.00	21.67	11,060.4	2,769.4	1,100.3	2,980.0	0.00	0.00	
13,900.0	92.00	21.67	11,057.0	2,862.3	1,137.2	3,079.9	0.00	0.00	
14,000.0	92.00	21.67	11,053.5	2,955.1	1,174.1	3,179.8	0.00	0.00	
14,100.0	92.00	21.67	11,050.0	3,048.0	1,211.0	3,279.8	0.00	0.00	
14,200.0	92.00	21.67	11,046.5	3,140.9	1,247.9	3,379.7	0.00	0.00	
14,300.0	92.00	21.67	11,043.0	3,233.8	1,284.8	3,479.6	0.00	0.00	
14,400.0	92.00	21.67	11,039.5	3,326.6	1,321.7	3,579.6	0.00	0.00	
14,500.0	92.00	21.67	11,036.0	3,419.5	1,358.6	3,679.5	0.00	0.00	

Cathedral Energy Services

Planning Report

Database:	EDM 5000.1 US Multi Users DB	Local Co-ordinate Reference:	Well DH07A-09 L16 498 (was 8006C)
Company:	EnCana Oil & Gas (USA) Inc	TVD Reference:	Well @ 8209.0ft
Project:	Figure Four Unit	MD Reference:	Well @ 8209.0ft
Site:	L16 498	North Reference:	True
Well:	DH07A-09 L16 498 (was 8006C)	Survey Calculation Method:	Minimum Curvature
Wellbore:	DD		
Design:	Plan #3		

Planned Survey

Measured Depth (ft)	Inclination (°)	Azimuth (°)	Vertical Depth (ft)	+N/-S (ft)	+E/-W (ft)	Vertical Section (ft)	Dogleg Rate (°/100ft)	Build Rate (°/100ft)	Comments / Formations
14,600.0	92.00	21.67	11,032.5	3,512.4	1,395.5	3,779.5	0.00	0.00	
14,700.0	92.00	21.67	11,029.0	3,605.3	1,432.4	3,879.4	0.00	0.00	
14,800.0	92.00	21.67	11,025.5	3,698.2	1,469.3	3,979.3	0.00	0.00	
14,900.0	92.00	21.67	11,022.1	3,791.0	1,506.2	4,079.3	0.00	0.00	
15,000.0	92.00	21.67	11,018.6	3,883.9	1,543.1	4,179.2	0.00	0.00	
15,100.0	92.00	21.67	11,015.1	3,976.8	1,580.0	4,279.2	0.00	0.00	
15,200.0	92.00	21.67	11,011.6	4,069.7	1,616.9	4,379.1	0.00	0.00	
15,300.0	92.00	21.67	11,008.1	4,162.5	1,653.8	4,479.0	0.00	0.00	
15,400.0	92.00	21.67	11,004.6	4,255.4	1,690.7	4,579.0	0.00	0.00	
15,500.0	92.00	21.67	11,001.1	4,348.3	1,727.6	4,678.9	0.00	0.00	
15,600.0	92.00	21.67	10,997.6	4,441.2	1,764.5	4,778.9	0.00	0.00	
15,700.0	92.00	21.67	10,994.1	4,534.1	1,801.4	4,878.8	0.00	0.00	
15,800.0	92.00	21.67	10,990.6	4,626.9	1,838.3	4,978.7	0.00	0.00	
15,900.0	92.00	21.67	10,987.2	4,719.8	1,875.2	5,078.7	0.00	0.00	
16,000.0	92.00	21.67	10,983.7	4,812.7	1,912.1	5,178.6	0.00	0.00	
16,100.0	92.00	21.67	10,980.2	4,905.6	1,949.0	5,278.6	0.00	0.00	
16,200.0	92.00	21.67	10,976.7	4,998.4	1,985.9	5,378.5	0.00	0.00	
16,300.0	92.00	21.67	10,973.2	5,091.3	2,022.8	5,478.4	0.00	0.00	
16,400.0	92.00	21.67	10,969.7	5,184.2	2,059.7	5,578.4	0.00	0.00	
16,500.0	92.00	21.67	10,966.2	5,277.1	2,096.6	5,678.3	0.00	0.00	
16,600.0	92.00	21.67	10,962.7	5,369.9	2,133.5	5,778.2	0.00	0.00	
16,620.7	92.00	21.67	10,962.0	5,389.2	2,141.1	5,799.0	0.00	0.00	DH07A-09 Permit TD

Targets

Target Name - hit/miss target - Shape	Dip Angle (°)	Dip Dir. (°)	TVD (ft)	+N/-S (ft)	+E/-W (ft)	Northing (ft)	Easting (ft)	Latitude	Longitude
DH07A-09 Permit TD - plan hits target center - Point	0.00	0.00	10,962.0	5,389.2	2,141.1	1,698,737.93	2,186,143.91	39° 42' 58.49 N	108° 23' 36.68 W
DH07A-09 Landing Pt - plan misses target center by 0.5ft at 11618.0ft MD (11136.6 TVD, 742.8 N, 295.1 E) - Point	0.00	0.00	11,137.0	742.7	295.4	1,694,152.73	2,184,150.78	39° 42' 12.57 N	108° 24' 0.30 W

Formations

Measured Depth (ft)	Vertical Depth (ft)	Name	Lithology	Dip (°)	Dip Direction (°)
899.0	899.0	Green River A		0.00	
1,099.0	1,099.0	Green River B		0.00	
4,729.0	4,729.0	Williams Fork		0.00	
5,529.0	5,529.0	TOG		0.00	
8,084.0	8,084.0	Rollins		0.00	
9,009.0	9,009.0	Mancos A		-2.00	21.69
10,896.3	10,859.0	Niobrara		0.00	

Cathedral Energy Services

Planning Report

Database:	EDM 5000.1 US Multi Users DB	Local Co-ordinate Reference:	Well DH07A-09 L16 498 (was 8006C)
Company:	EnCana Oil & Gas (USA) Inc	TVD Reference:	Well @ 8209.0ft
Project:	Figure Four Unit	MD Reference:	Well @ 8209.0ft
Site:	L16 498	North Reference:	True
Well:	DH07A-09 L16 498 (was 8006C)	Survey Calculation Method:	Minimum Curvature
Wellbore:	DD		
Design:	Plan #3		

Plan Annotations

Measured Depth (ft)	Vertical Depth (ft)	Local Coordinates		Comment
		+N/-S (ft)	+E/-W (ft)	
10,394.0	10,394.0	0.0	0.0	KOP @ 10394'
11,588.8	11,137.6	715.7	284.3	Landing Pt @ 11137' TVD, 92°
16,620.7	10,962.0	5,389.2	2,141.1	TD at 16620.7