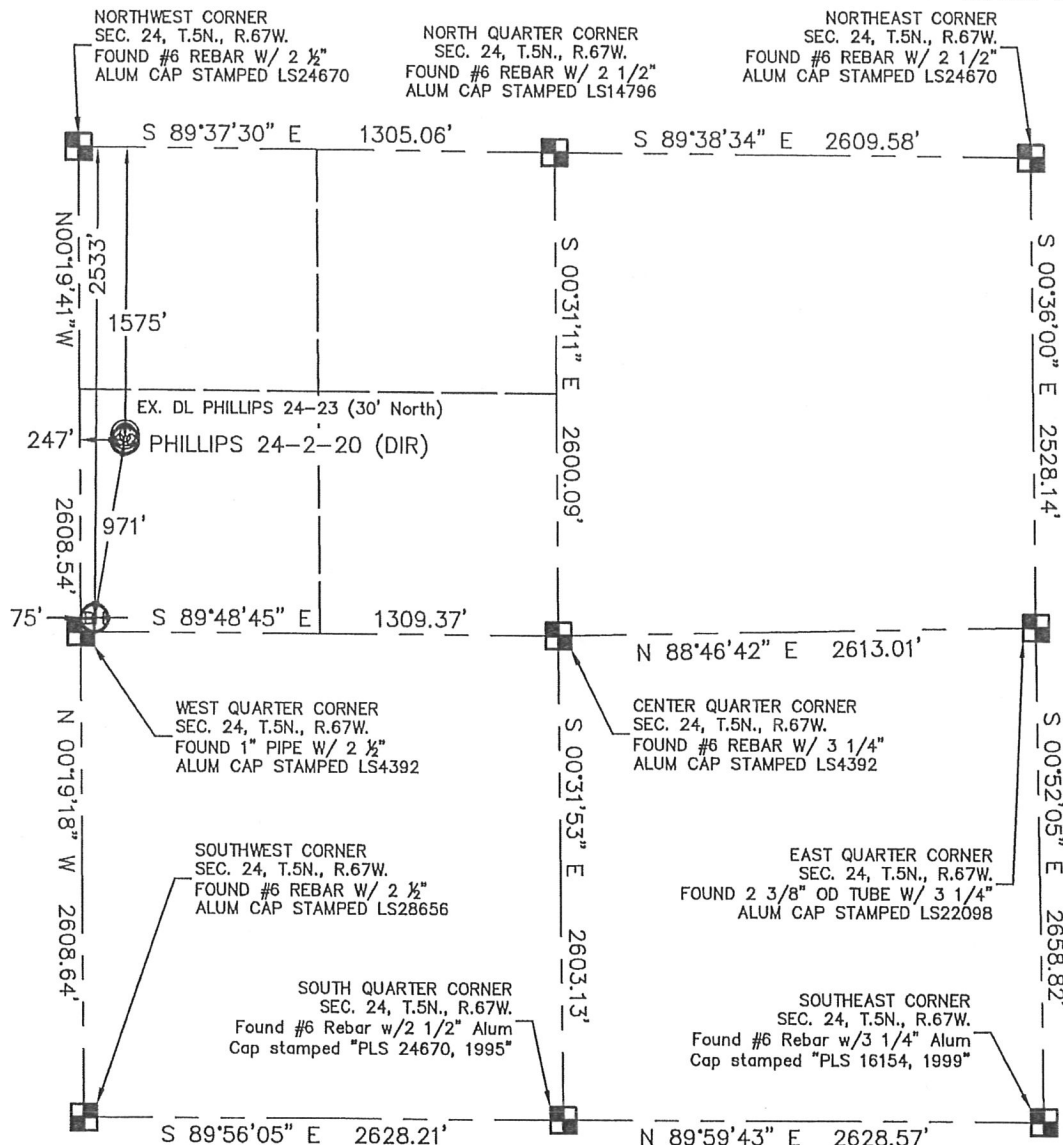


KING SURVEYORS, INC. 650 E. GARDEN DR. WINDSOR, CO 80550

# WELL LOCATION CERTIFICATE

THIS MAP DOES NOT REPRESENT A BOUNDARY SURVEY

SECTION: 24  
TOWNSHIP: 5N  
RANGE: 67W



In accordance with a request from JOE JOHNSON with Noble Energy Inc. King Surveyors Inc. has determined the surface location of the PHILLIPS 24-2-20 (DIR) to be 1575' from the NORTH line and 247' from the WEST line and the bottom hole to be 2533' from the North line and 75' from the west line as measured at right angles from the section line of Section 24, Township 5 North, Range 67 West of the Sixth Principal Meridian, County of Weld, State of Colorado.

I hereby state that this Well Location Certificate was prepared by me, or under my direct supervision, that the fieldwork was completed on 8-28-2008, for and on behalf of Noble Energy Inc. That this is not a Land Survey Plat or an Improvement Survey Plat, and that it is not to be relied upon for establishment of fence, building, or other future Improvement lines.

## NOTE:

- 1) Bearings shown are Grid Bearings of the Colorado State Plane Coordinate System, North Zone, North American Datum 1983/2007. The lineal dimensions as contained herein are based upon the "U.S. Survey Foot."
- 2) Ground elevations are based on an observed GPS elevation (NAVD 1988 DATUM).
- 3) NEAREST EXISTING WELL: DL PHILLIPS 24-23 30' North
- 4) IMPROVEMENTS: See VISIBLE IMPROVEMENTS exhibit for all visible improvements within 400' of well head.
- 5) SURFACE USE: PASTURE

## SURFACE LOCATION

LATITUDE: 40.38787°N  
LONGITUDE: 104.85005°W  
PDOP: 1.5  
ELEV: 4987  
1/4, 1/4: SW1/4NW1/4  
NEAREST PROPERTY LINE: 247' WEST

## BOTTOM HOLE

LATITUDE: 40.38525°N  
LONGITUDE: 104.85067°W

## NOTE

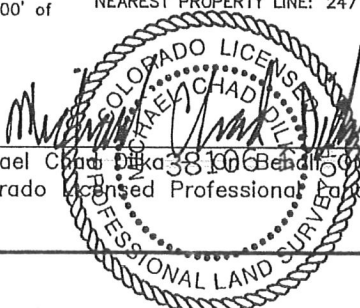
According to Colorado law, you must commence any legal action based upon any defect in this W.L.C. within three years after you discover such defect. In no event, may any action based upon any defect in this survey be commenced more than ten years after the date of the certificate shown hereon. (13-80-105 C.R.S.)

## LEGEND

- = ALIQUOT MONUMENT AS DESCRIBED
- = CALCULATED POSITION

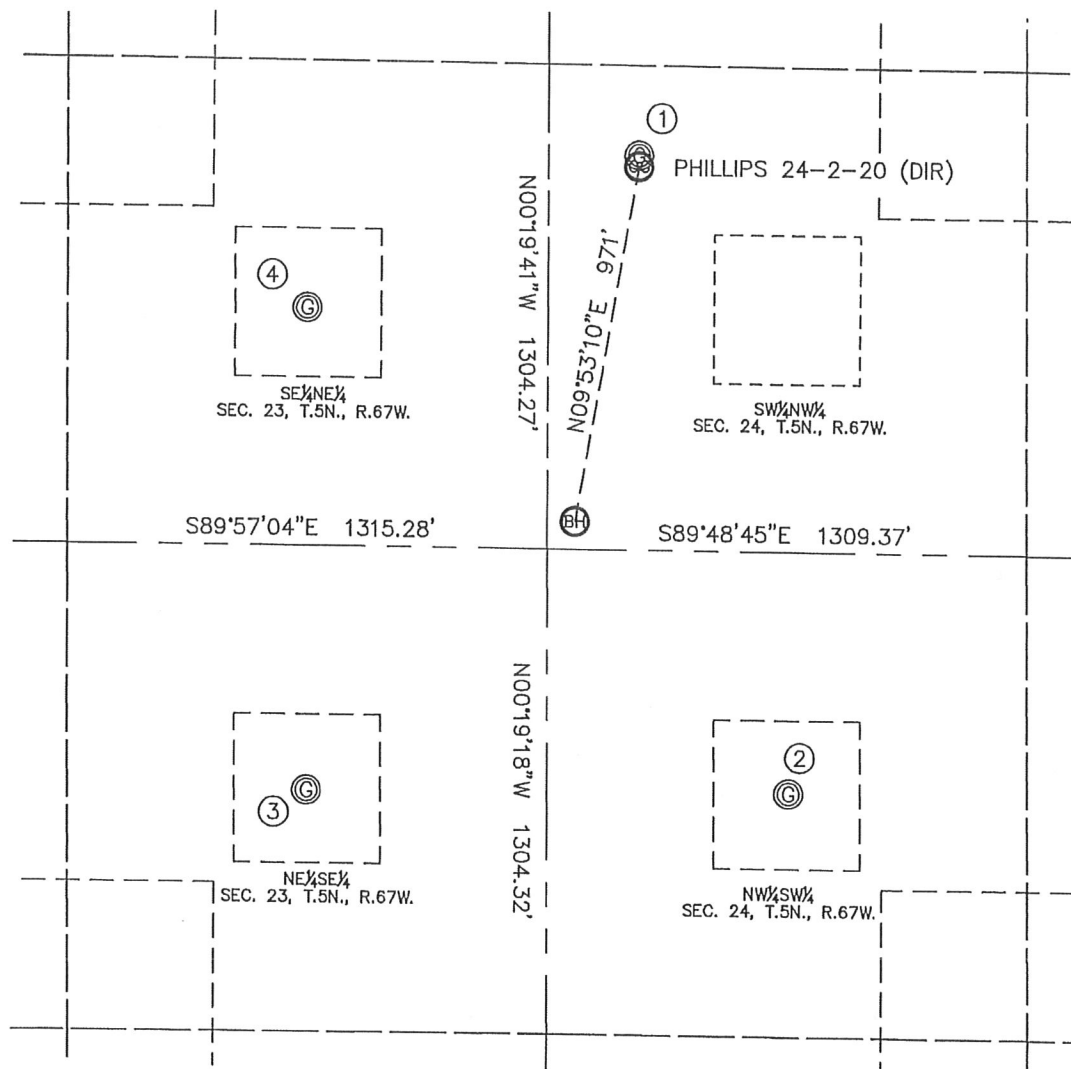
Michael Chadwick, 38106, King Surveyors, Inc.  
Colorado Licensed Professional Land Surveyor #38106

PROJECT#: 2010144



KING SURVEYORS, INC. 650 E. GARDEN DR. WINDSOR, CO 80550  
**SITE SKETCH**

SECTION: 24  
 TOWNSHIP: 5N  
 RANGE: 67W



①  
 DL PHILLIPS 24-23  
 SW 1/4 NW 1/4  
 1546' FNL  
 247' FWL  
 LAT-40.38795°N  
 LONG-104.85005°W  
 PDOP: 3.3  
 ELEV: 4987'

②  
 DL PHILLIPS 24-32  
 NW 1/4 SW 1/4  
 1959' FSL  
 659' FWL  
 LAT-40.38325°N  
 LONG-104.84858°W  
 PDOP: 1.7  
 ELEV: 5031'

③  
 PHILLIPS 23-41  
 NE 1/4 SE 1/4  
 1956' FSL  
 661' FEL  
 LAT-40.38326°N  
 LONG-104.85332°W  
 PDOP: 1.4  
 ELEV: 4991'

④  
 PHILLIPS 23-14  
 SE 1/4 NE 1/4  
 1972' FNL  
 661' FEL  
 LAT-40.38682°N  
 LONG-104.85331°W  
 PDOP: 1.3  
 ELEV: 4984'

0 500  
 1"=500'