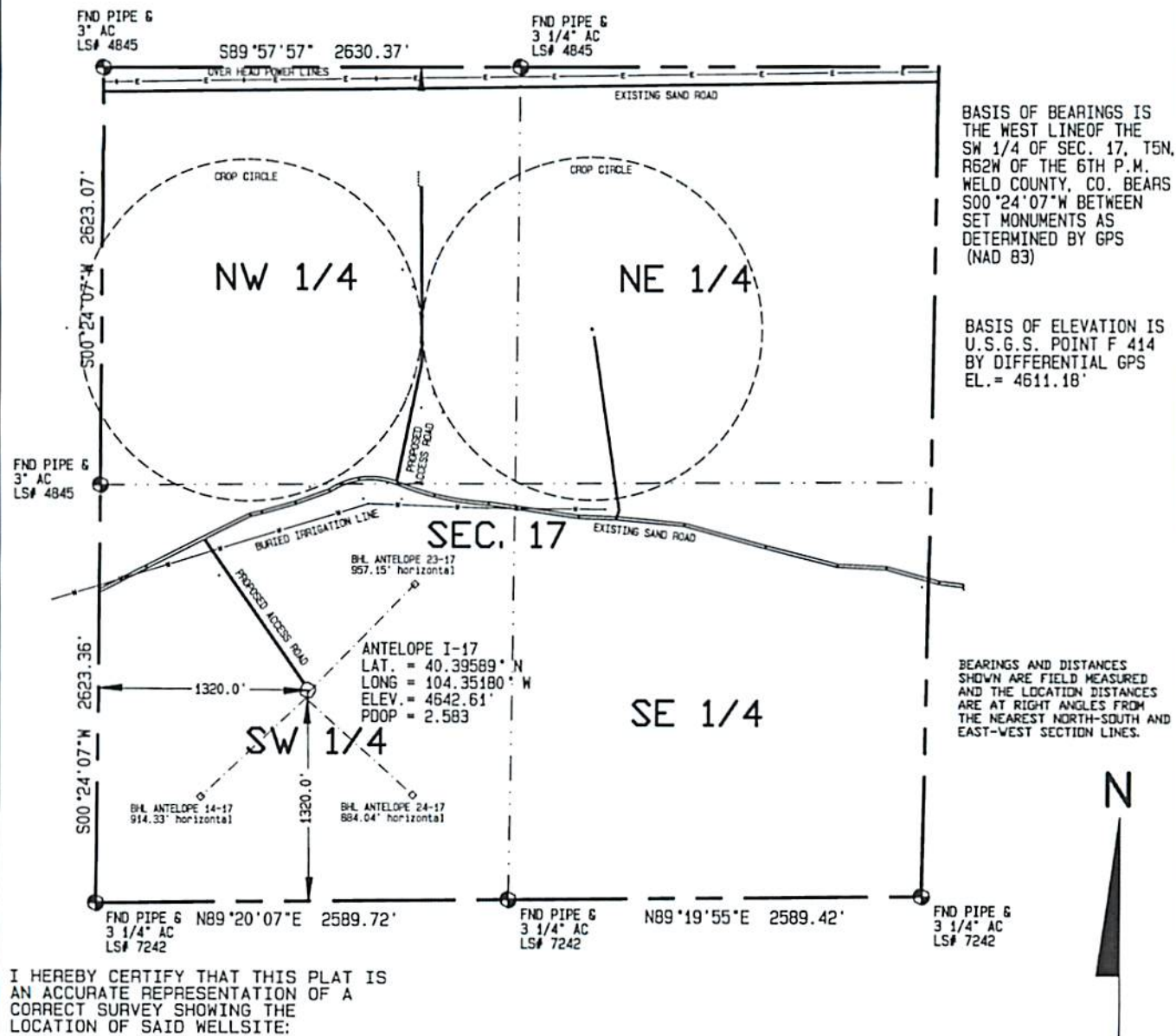


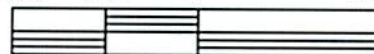
SURFACE HOLE LOCATIONS						BOTTOM HOLE LOCATIONS					
WELL	LAT.	LONG.	EL.	FSL	FWL	WELL	LAT.	LONG.	FSL	FWL	
I-17	40.39589°	104.35180°	4642.61'	1320.0'	1320.0'	I-17	40.39589°	104.35180°	1320.0'	1320.0'	
23-17	40.39584°	104.35180°	4642.58'	1300.0'	1320.0'	23-17	40.39770°	104.34939°	1980.0'	1980.0'	
14-17	40.39578°	104.35181°	4642.39'	1280.2'	1320.1'	14-17	40.39408°	104.35422°	660.0'	660.0'	
24-17	40.39572°	104.35181°	4642.32'	1260.4'	1320.1'	24-17	40.39408°	104.34948°	660.0'	1980.0'	

There are no visible improvements within 400 feet of the location.



I HEREBY CERTIFY THAT THIS PLAT IS AN ACCURATE REPRESENTATION OF A CORRECT SURVEY SHOWING THE LOCATION OF SAID WELLSITE:

1000 500 0 1000



Scale 1" = 1000'

Dan Griggs PLS# 38018

**CONTRACT SURVEYORS, LTD.**  
COMPLETE SURVEYING AND GLOBAL POSITIONING

2133 SOUTH BELLAIRE STREET #14  
DENVER COLORADO 80222  
(303) 756-3695



CSL# 10104-39  
REVISED

DATE OF FIELD WORK  
21 JULY, 2010

DATE OF DRAWING  
19 NOVEMBER, 2010

ANTELOPE I-17 24-17

98c 1/4/11

NE 1/4, SW 1/4 SEC. 17, T5N, R62W

BONANZA CREEK ENERGY OPERATING COMPANY, LLC

WELD COUNTY, COLORADO