

Steil Surveying Services, LLC

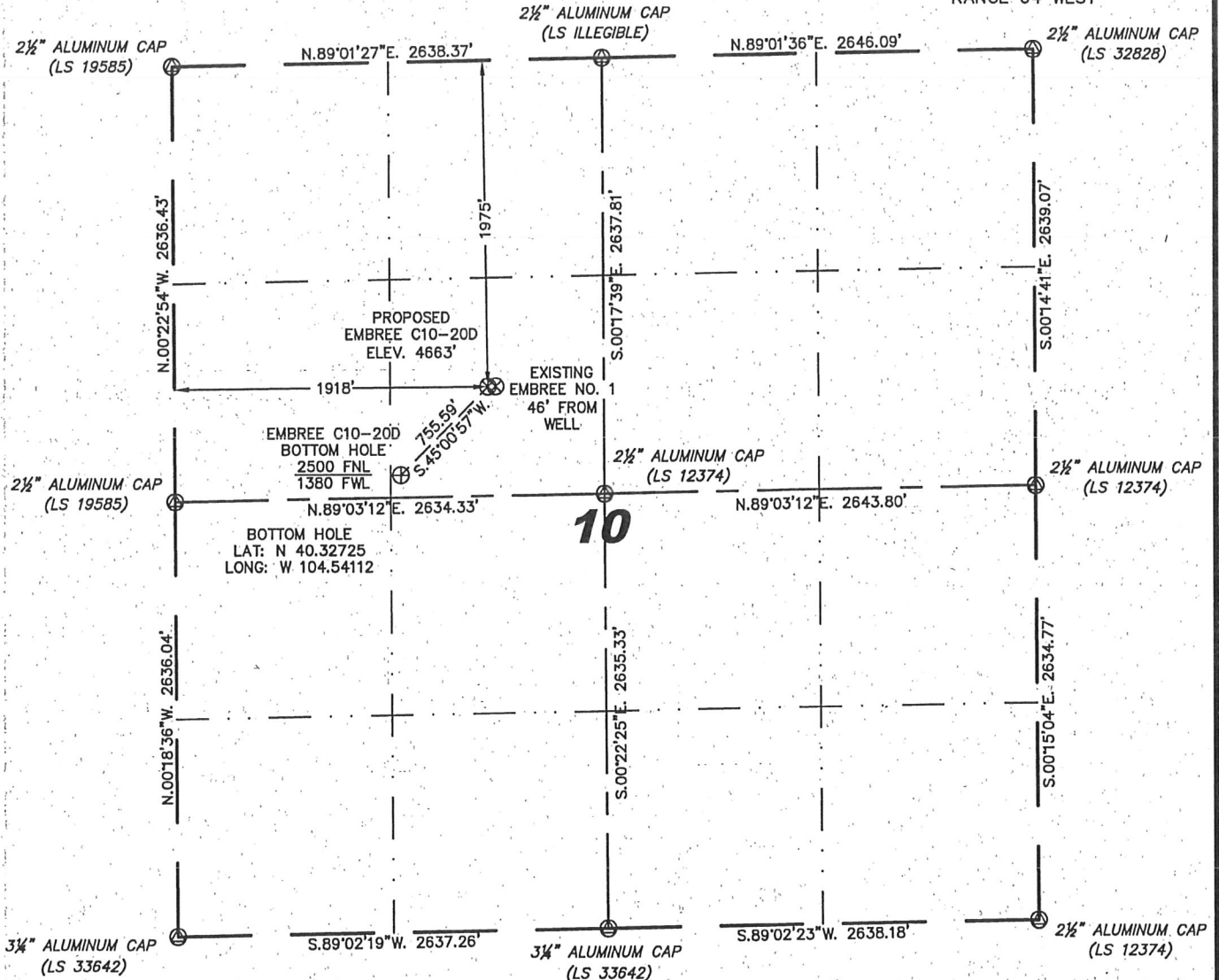
1102 West 19th Street P.O. BOX 2073

Cheyenne, Wyoming 82009

WELL LOCATION CERTIFICATE

THIS MAP DOES NOT REPRESENT A BOUNDARY SURVEY

SECTION 10
TOWNSHIP 4 NORTH
RANGE 64 WEST



IN ACCORDANCE WITH A REQUEST FROM C.J. PIETRI - NOBLE ENERGY INC, STEIL SURVEYING SERVICES, LLC HAS DETERMINED THE LOCATION OF THE EMBREE C10-20D WELL TO BE 1975' FNL, 1918' FWL, AS MEASURED AT NINETY (90) DEGREES FROM THE SECTION LINES, SECTION 10, TOWNSHIP 4 NORTH, RANGE 64 WEST, 6TH PRINCIPLE MERIDIAN, WELD COUNTY, COLORADO.

I HEREBY CERTIFY THAT THIS WELL LOCATION CERTIFICATE WAS PREPARED BY ME, OR UNDER MY DIRECT SUPERVISION, THAT THE FIELD WORK WAS COMPLETED ON 09/14/2010, FOR AND ON BEHALF OF NOBLE ENERGY INC, THAT IT IS NOT A LAND SURVEY PLAT OR AN IMPROVEMENT SURVEY PLAT, AND THAT IT IS NOT TO BE RELIED UPON FOR ESTABLISHMENT OF FENCE, BUILDING, OR OTHER FUTURE IMPROVEMENT LINES.

NOTES:

- 1) BASIS OF BEARINGS FOR THIS MAP ARE BASED UPON GPS OBSERVATIONS MADE ON 09/26/2009 BETWEEN MONUMENTS LOCATED AT THE SOUTHEAST SECTION CORNER AND THE NORTHEAST SECTION CORNER OF SAID SECTION AND WITH ALL BEARINGS SHOWN HEREON RELATIVE THERETO.
- 2) COORDINATES SHOWN ARE COLORADO STATE PLANE (NORTH ZONE) NAD 83.
- 3) ELEVATIONS ARE BASED UPON NGS OPUS SOLUTION NAVD 88 DATUM.
- 4) THE NEAREST EXISTING WELL IS: EMBREE NO. 1, 46' EAST.
- 5) SEE VISIBLE IMPROVEMENTS EXHIBIT FOR ALL IMPROVEMENTS WITHIN 600'.
- 6) THE LOCATION FALLS IN CROP LAND.

LATITUDE & LONGITUDE (NAD 83 SURFACE HOLE):

LATITUDE: N 40.32870°

LONGITUDE: W 104.53918°

PDOP: 2.1

QUARTER-QUARTER: SE/4NW/4

NEAREST PROPERTY LINE: 662' TO THE SOUTH

NOTICE: According to Colorado law you MUST commence any legal action based upon any defect in this W.L.C. within three years after you first discover such defect. In no event may any action based upon any defect in this W.L.C. be commenced more than ten years from this sold date of the certification shown hereon.

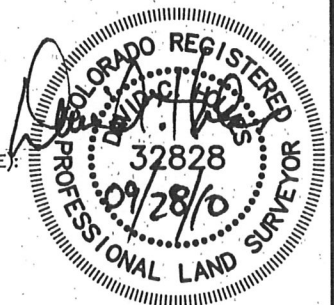
LEGEND

- ⊙ FOUND SURVEY MONUMENT PER MONUMENT RECORD - EXCEPTIONS NOTED.
- (C) CALCULATED DIMENSION

David C. Holmes
Professional Land Surveyor Registration No. 32828
State of Colorado

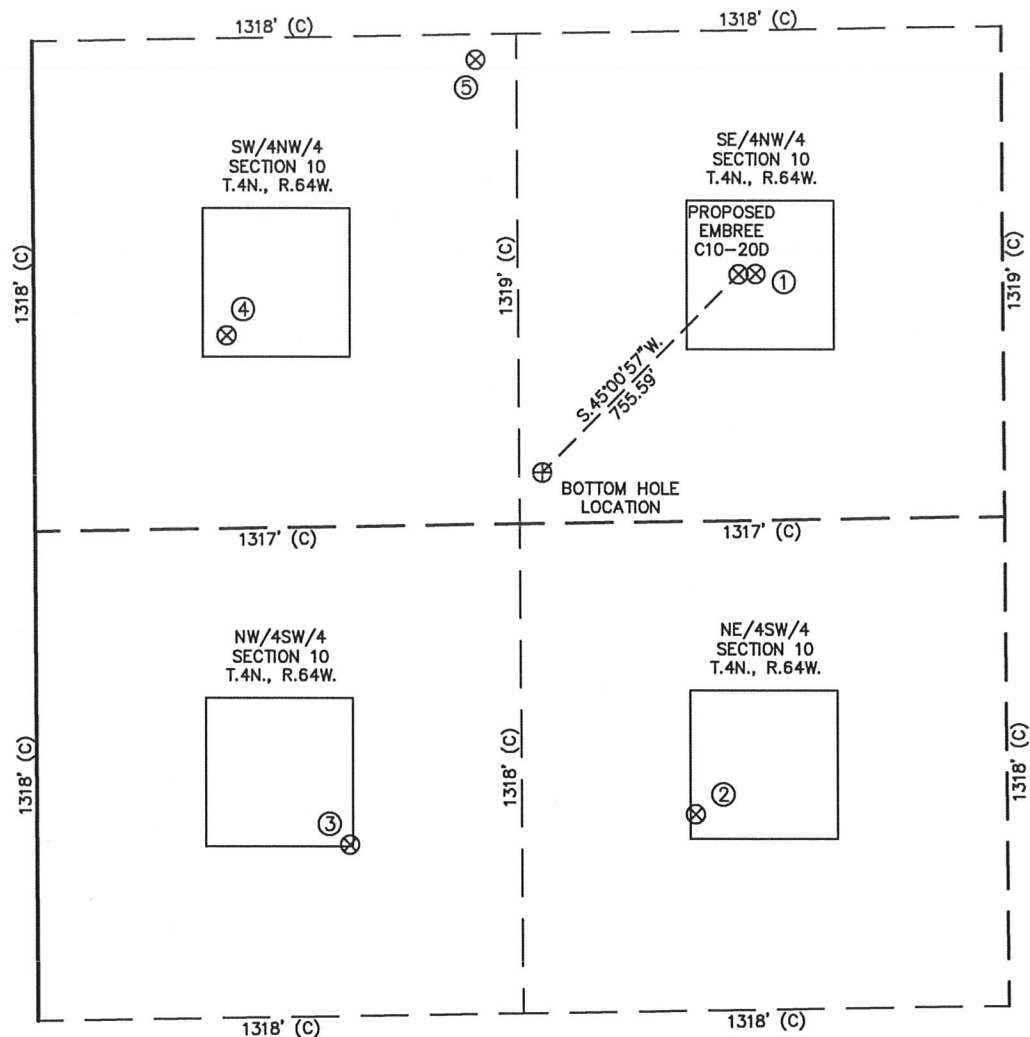
JOB #: 10086

Completed: 09/28/2010



SKETCH - EMBREE C10-20D

SECTION 10
TOWNSHIP 4 NORTH
RANGE 64 WEST



①

EMBREE NO. 1
SE/NW SEC. 10
1974' FNL
1964' FWL
EL 4662'
N 40.32870
W 104.53902
PDOP 1.4

②

RICHARDSON
10-11
NE/SW SEC. 10
1846' FSL
1790' FWL
EL 4649'
N 40.32471
W 104.53967
PDOP 1.7

③

RICHARDSON
10-12
NW/SW SEC. 10
1779' FSL
850' FWL
EL 4660'
N 40.32451
W 104.54304
PDOP 1.9

④

REINICK 10-5
SW/NW SEC. 10
2117' FNL
524' FWL
EL 4672'
N 40.32828
W 104.54419
PDOP 1.9

⑤

EMBRICK C10-19
SW/NW SEC. 10
1387' FNL
1207' FWL
(RECORD
LOCATION)

NOTES:

- 1) THIS SKETCH DOES NOT REPRESENT A BOUNDARY SURVEY.
- 2) THE DATUM FOR THE LATITUDES AND LONGITUDES ON THIS SKETCH IS NAD83.

