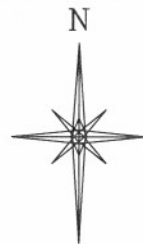
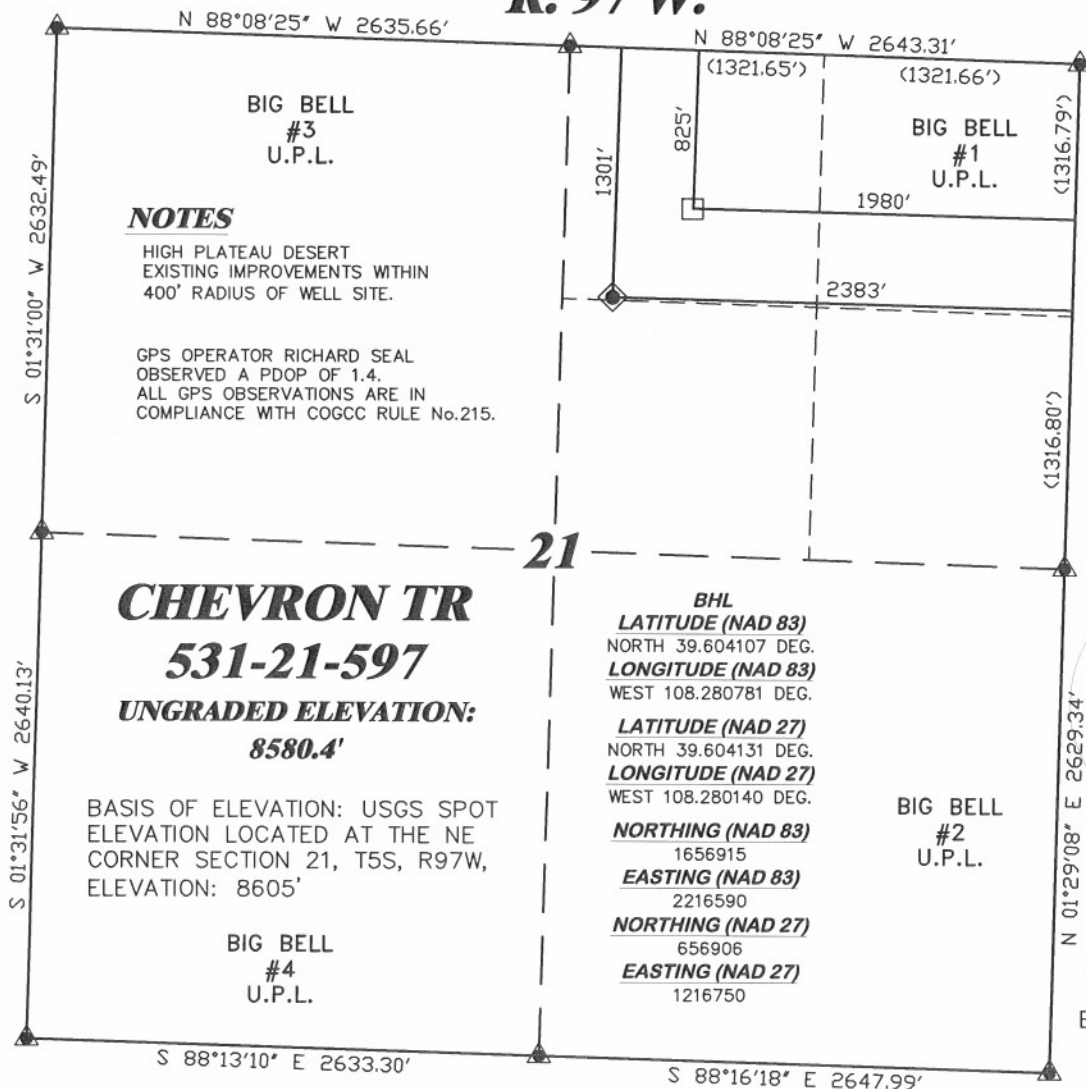


**R. 97 W.**



SCALE 1" = 1000'

**T. 5 S.**

**LATITUDE (NAD 83)**

NORTH 39.602801 DEG.

**LONGITUDE (NAD 83)**

WEST 108.282206 DEG.

**LATITUDE (NAD 27)**

NORTH 39.602825 DEG.

**LONGITUDE (NAD 27)**

WEST 108.281565 DEG.

**NORTHING (NAD 83)**

1656452.15

**EASTING (NAD 83)**

2216174.02

**NORTHING (NAD 27)**

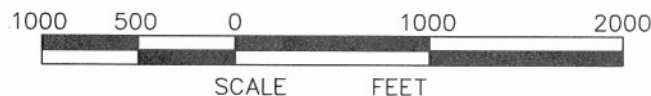
656442.63

**EASTING (NAD 27)**

1216334.44

**BASIS OF BEARING/DATUM**

SPCS CO CENTRAL NAD 27  
BASED ON NGS TRIANGULATION  
STATION "SHALE"

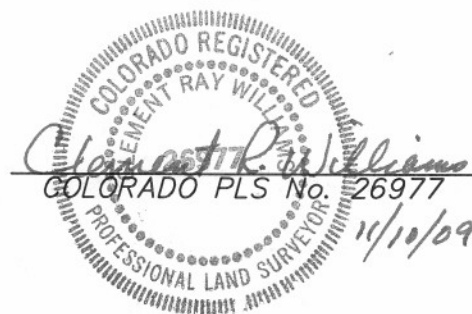


**SURVEYOR'S STATEMENT**

I, CLEMENT R. WILLIAMS, OF ROCK SPRINGS, WYOMING, HEREBY STATE: THIS MAP WAS MADE FROM NOTES TAKEN DURING AN ACTUAL FIELD SURVEY DONE UNDER MY DIRECT SUPERVISION ON AUGUST 25, 2009 AND THAT THIS PLAT CORRECTLY SHOWS THE LOCATION OF CHEVRON TR 531-21-597 AS STAKED ON THE GROUND.

**LEGEND**

- ◆ WELL LOCATION
- BOTTOM HOLE LOC. (APPROX)
- FOUND MONUMENT
- ▲ PREVIOUSLY FOUND MONUMENT (1923 GLO B.C.)



CHEVRON TR 32-21-597 PAD



**RIFFIN & ASSOCIATES, INC.**  
1414 ELK ST., ROCK SPRINGS, WY 82901

(307) 362-5028

DRAWN: 11/10/09 - MMM

REVISED: NA

SCALE: 1" = 1000'

DRG JOB No. 12855-10

EXHIBIT 1

**PLAT OF DRILLING LOCATION  
FOR  
WILLIAMS PRODUCTION RMT COMPANY**  
**1301' F/NL & 2383' F/EL, SECTION 21,  
T. 5 S., R. 97 W., 6th P.M.  
GARFIELD COUNTY, COLORADO**