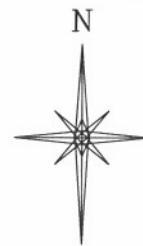
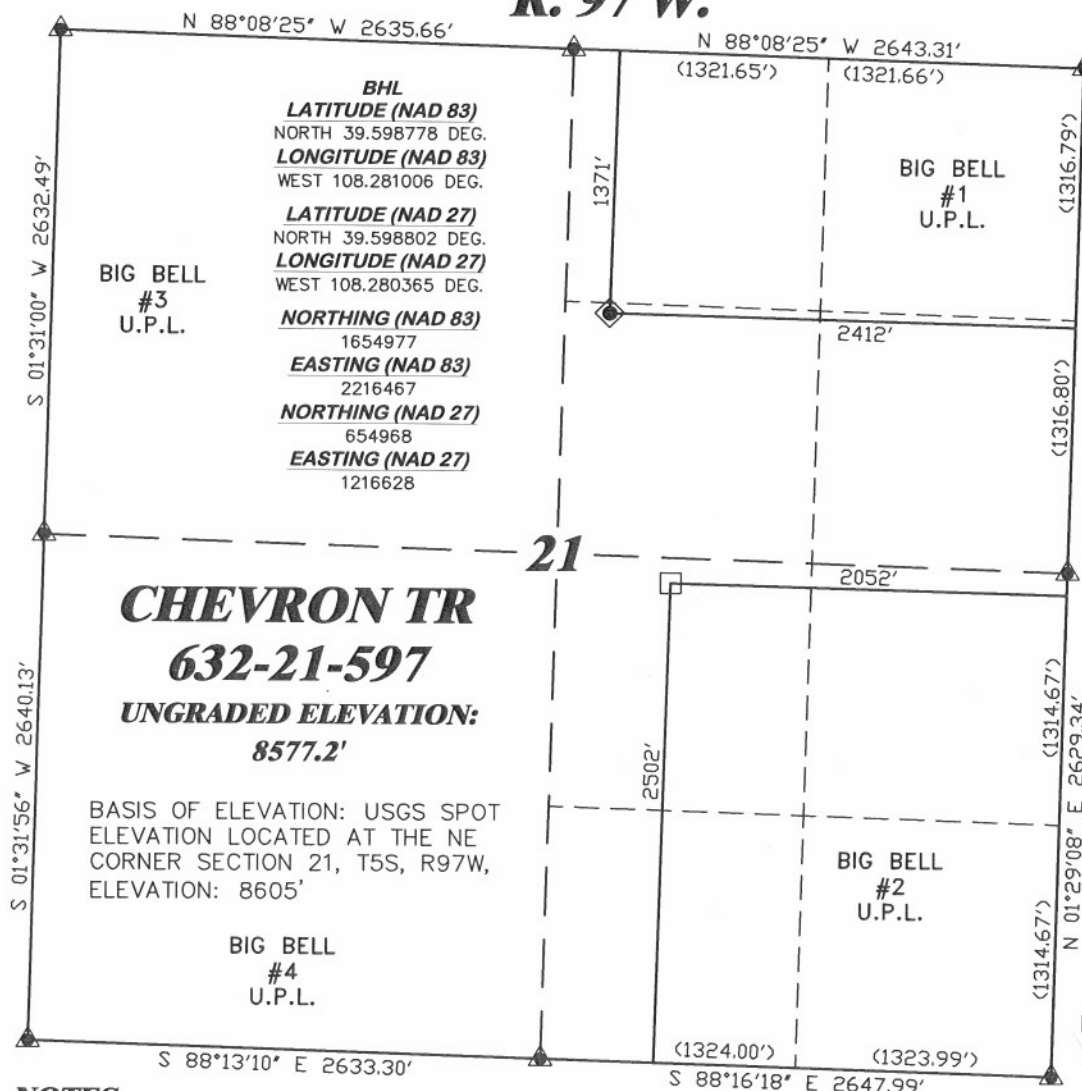


R. 97 W.



SCALE 1" = 1000'

T. 5 S.



LATITUDE (NAD 83)
NORTH 39.602611 DEG.
LONGITUDE (NAD 83)
WEST 108.282307 DEG.

LATITUDE (NAD 27)
NORTH 39.602635 DEG.
LONGITUDE (NAD 27)
WEST 108.281666 DEG.

NORTHING (NAD 83)
1656383.62
EASTING (NAD 83)
2216143.53

NORTHING (NAD 27)
656374.10
EASTING (NAD 27)
1216303.95

BASIS OF BEARING/DATUM
SPCS CO CENTRAL NAD 27
BASED ON NGS TRIANGULATION
STATION "SHALE"

NOTES

HIGH PLATEAU DESERT
EXISTING IMPROVEMENTS WITHIN
400' RADIUS OF WELL SITE.

GPS OPERATOR RICHARD SEAL
OBSERVED A PDOP OF 1.4.
ALL GPS OBSERVATIONS ARE IN
COMPLIANCE WITH COGCC RULE No.215.



SURVEYOR'S STATEMENT

I, CLEMENT R. WILLIAMS, OF ROCK SPRINGS, WYOMING, HEREBY STATE: THIS MAP WAS MADE FROM NOTES TAKEN DURING AN ACTUAL FIELD SURVEY DONE UNDER MY DIRECT SUPERVISION ON AUGUST 25, 2009 AND THAT THIS PLAT CORRECTLY SHOWS THE LOCATION OF CHEVRON TR 632-21-597 AS STAKED ON THE GROUND.

LEGEND

- ◆ WELL LOCATION
- BOTTOM HOLE LOC. (APPROX)
- FOUND MONUMENT
- ▲ PREVIOUSLY FOUND MONUMENT (1923 GLO B.C.)



CHEVRON TR 32-21-597 PAD

DRG RIFFIN & ASSOCIATES, INC. (307) 362-5028 1414 ELK ST., ROCK SPRINGS, WY 82901	
DRAWN: 11/10/09 - MMM	SCALE: 1" = 1000'
REVISED: NA	DRG JOB No. 12855-7
EXHIBIT 1	

**PLAT OF DRILLING LOCATION
FOR
WILLIAMS PRODUCTION RMT COMPANY**
**1371' F/NL & 2412' F/EL, SECTION 21,
T. 5 S., R. 97 W., 6th P.M.
GARFIELD COUNTY, COLORADO**